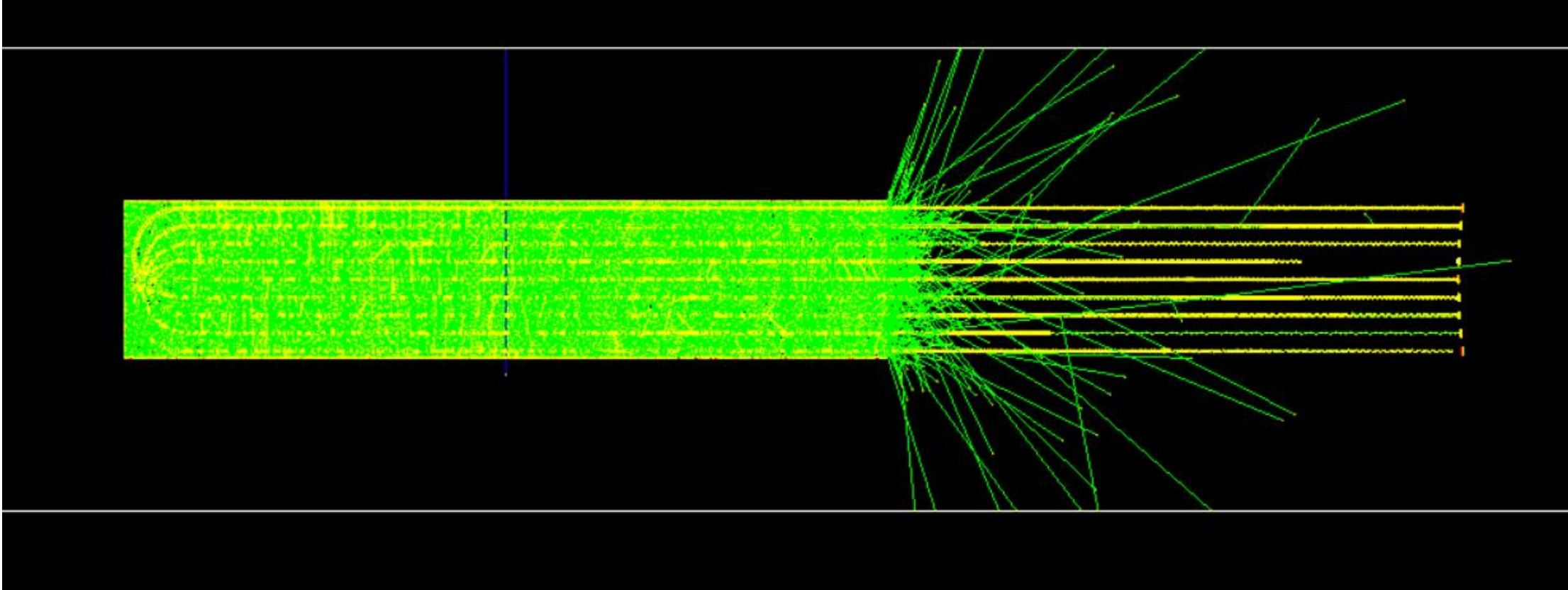
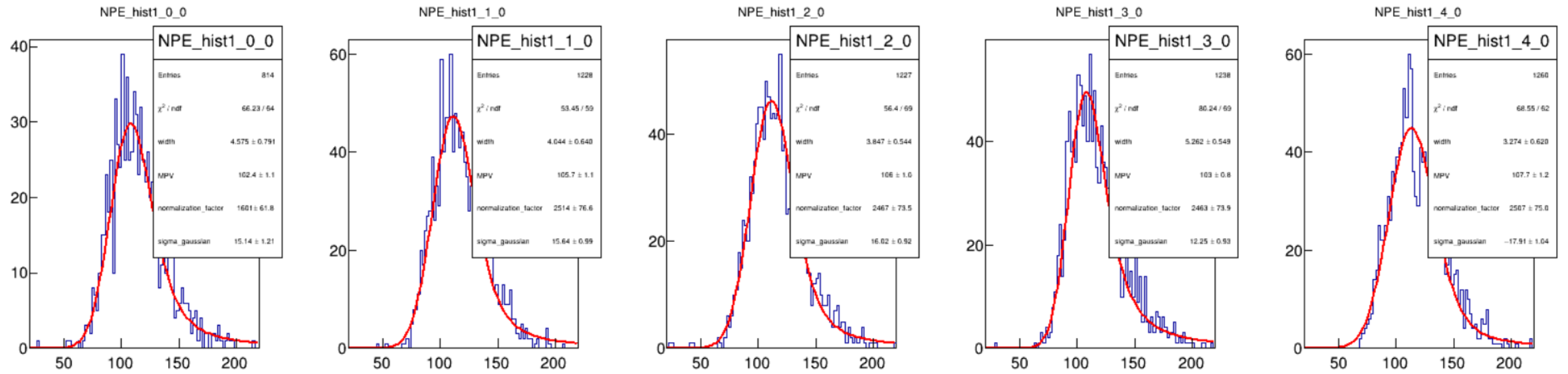


200429

Geometry



Results (with aluminum light box)



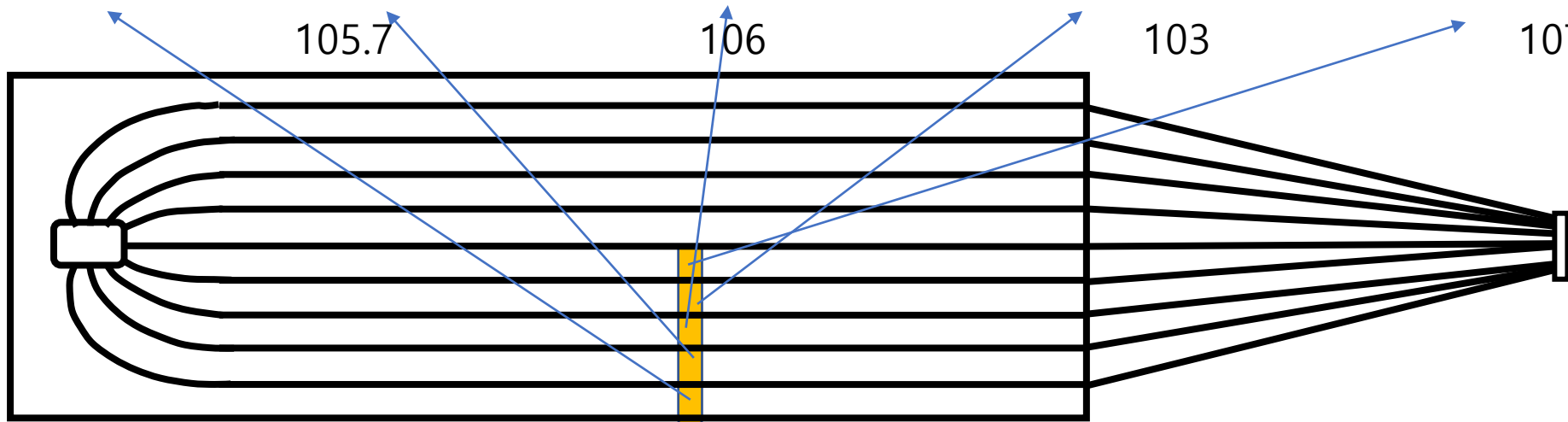
NPE 102.4

105.7

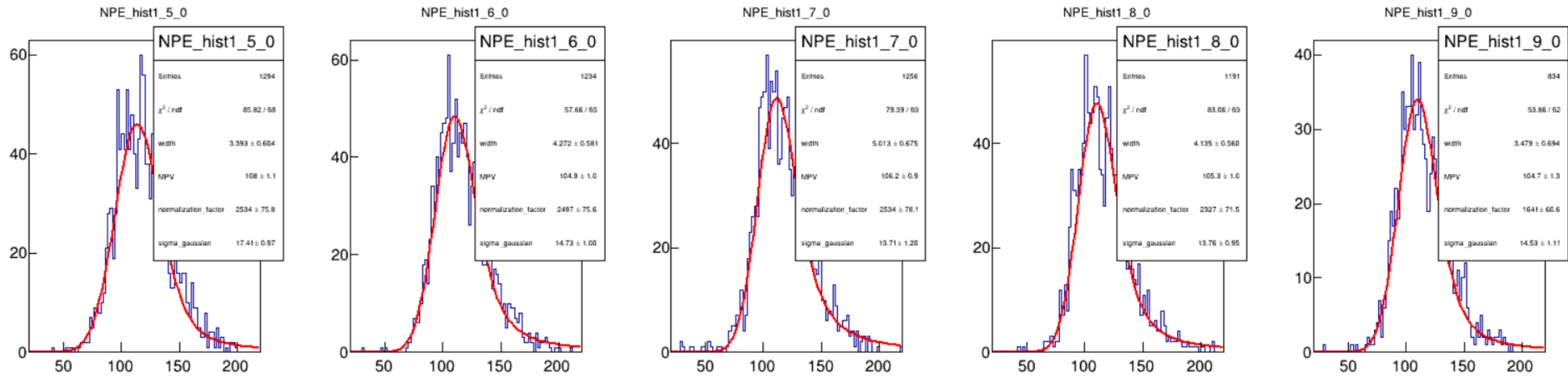
106

103

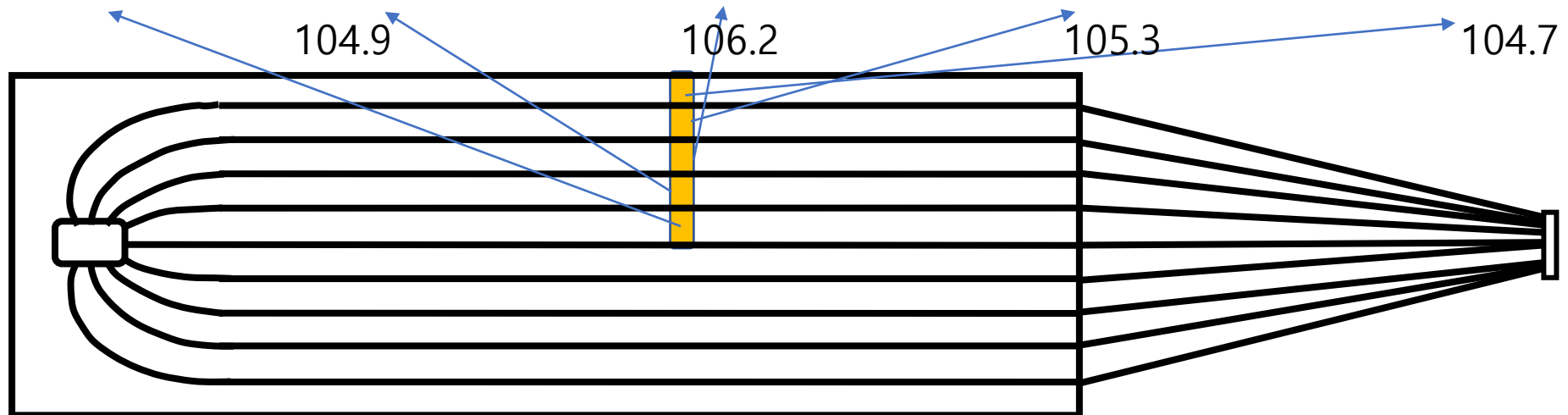
107.7



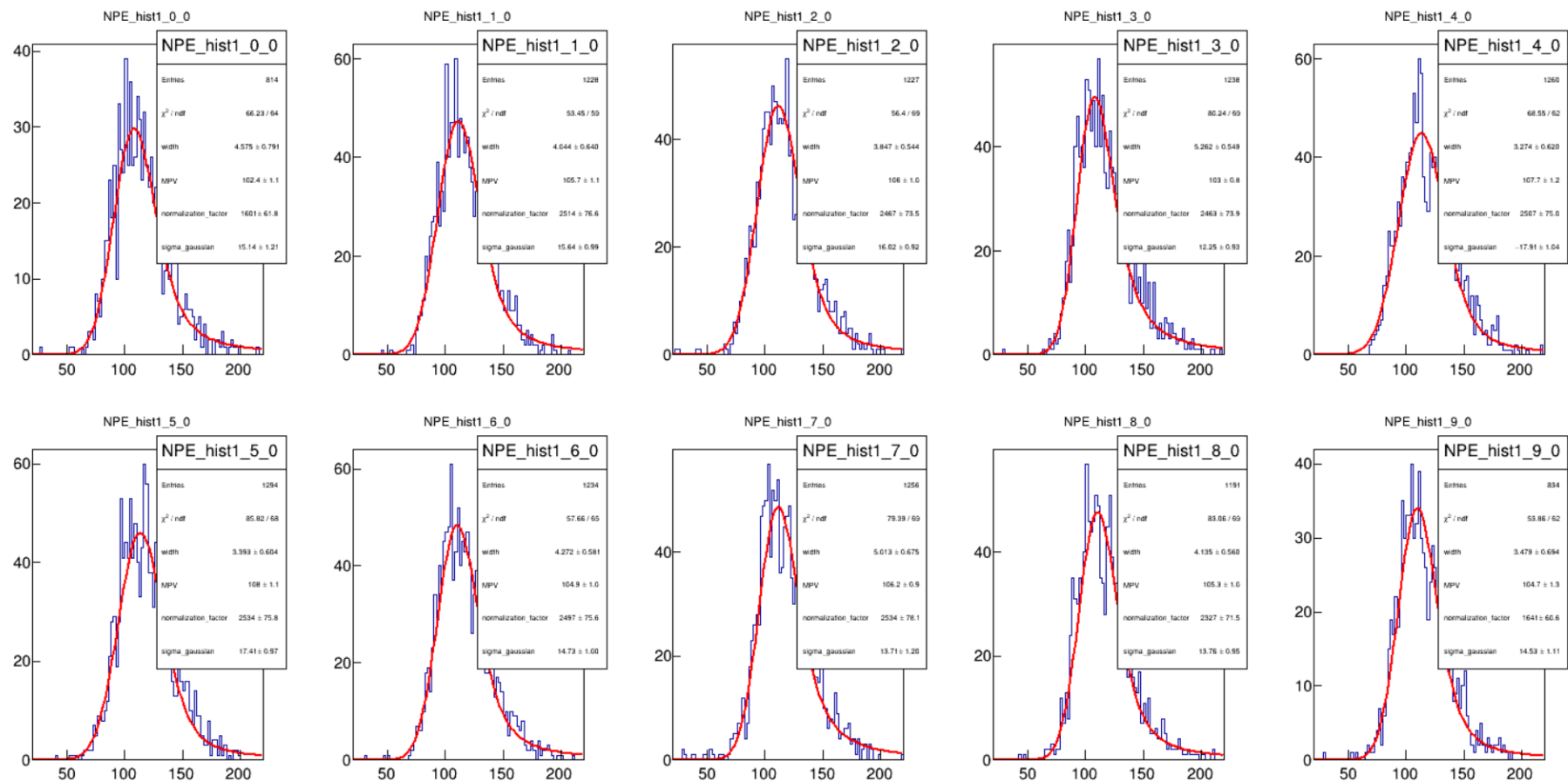
Results (with aluminum light box)



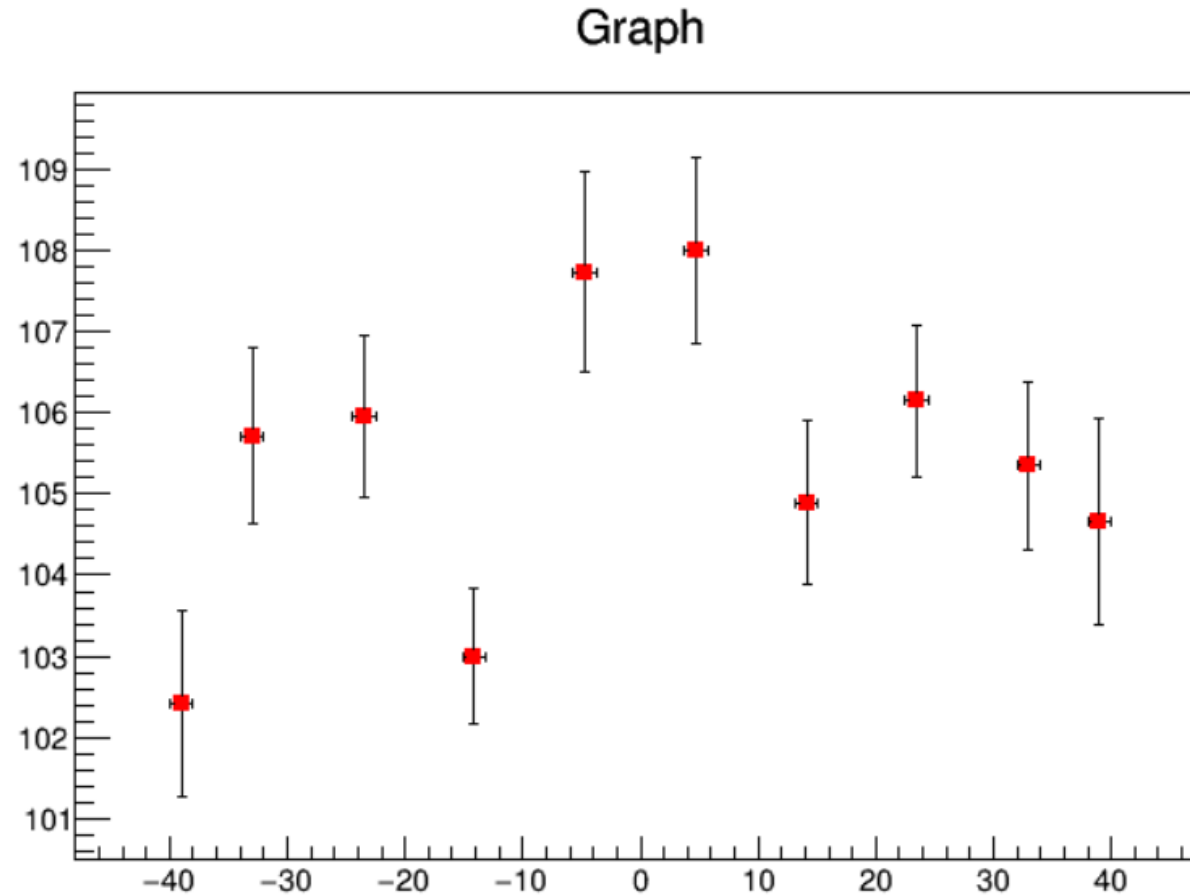
NPE 108



Results

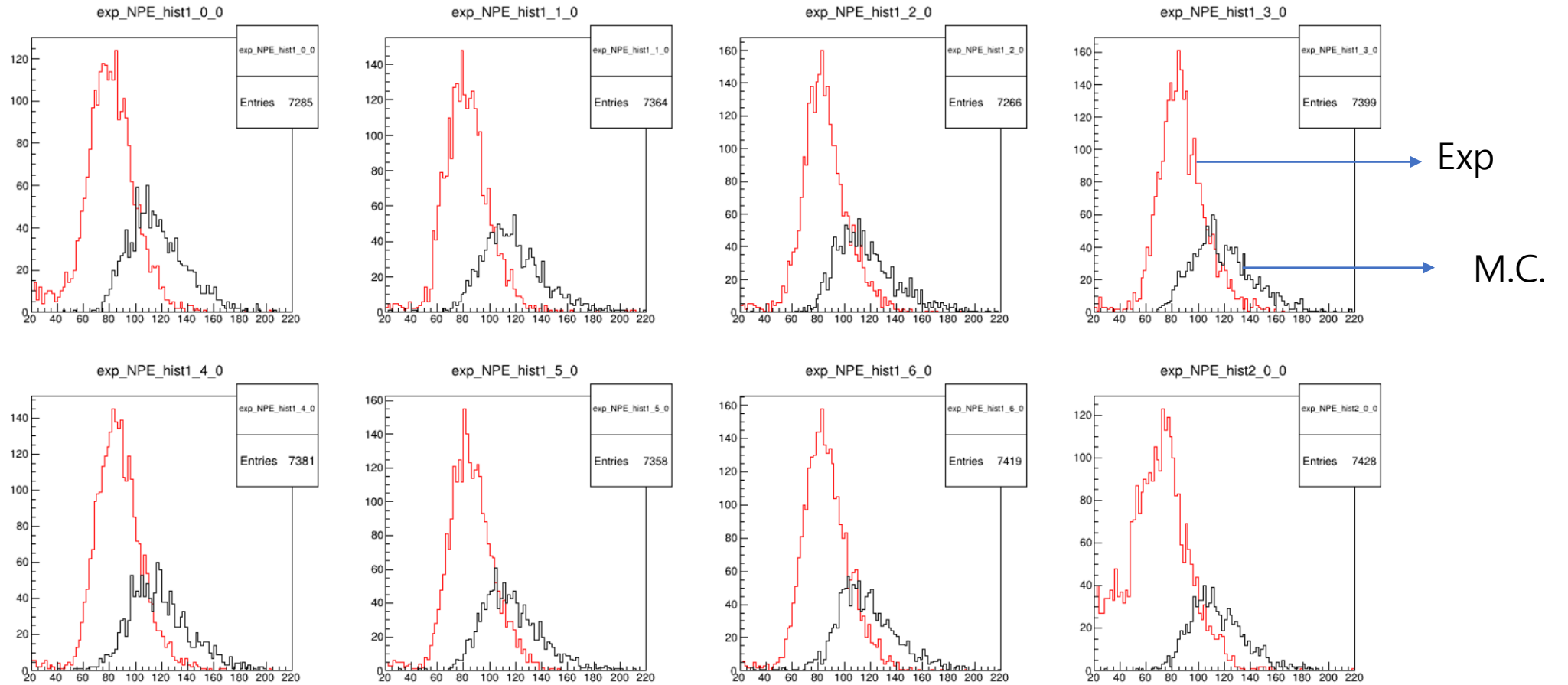


Dependency in width direction

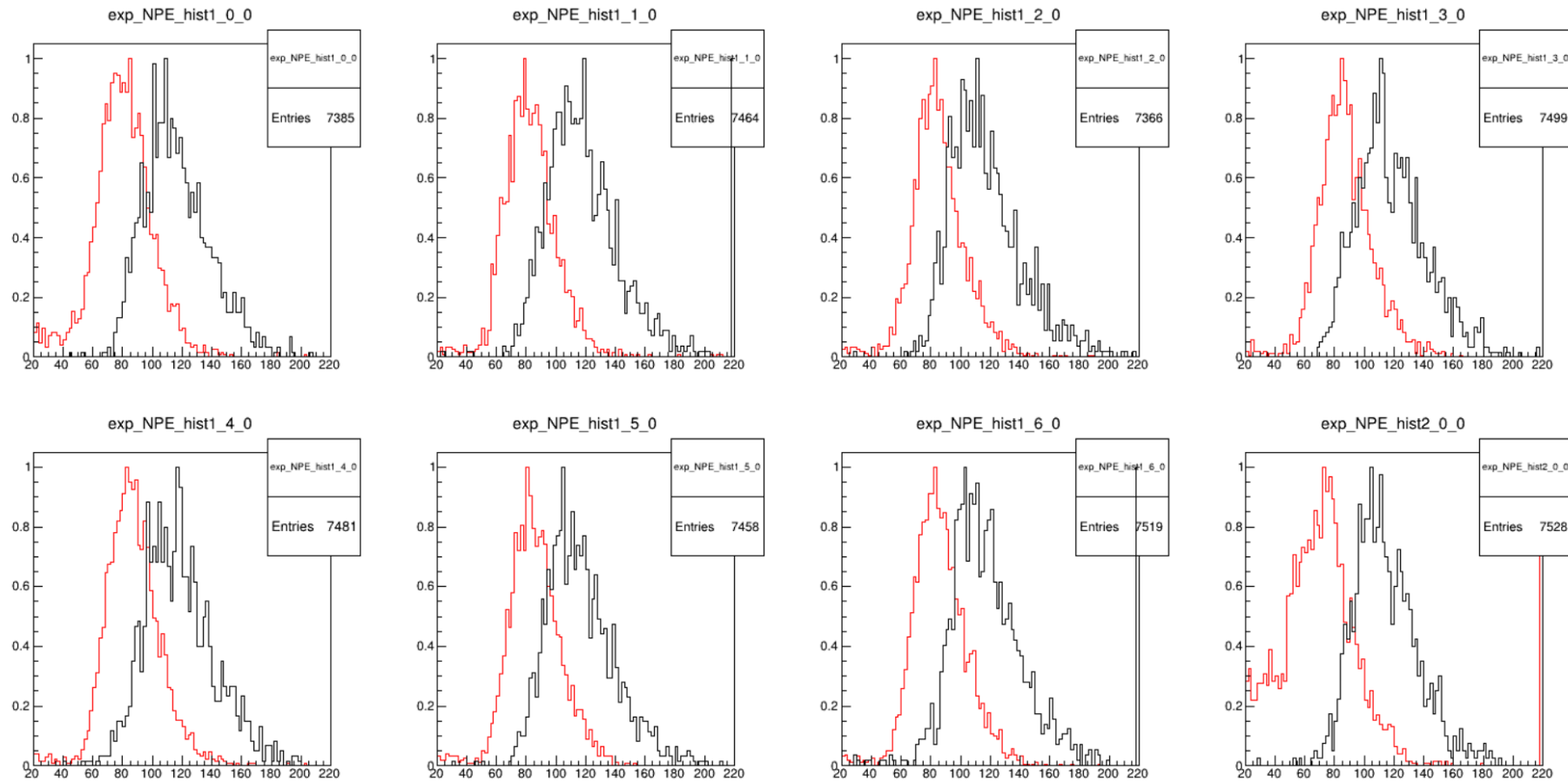


-> Event 수 늘려보기?

Compare experiment with simulation



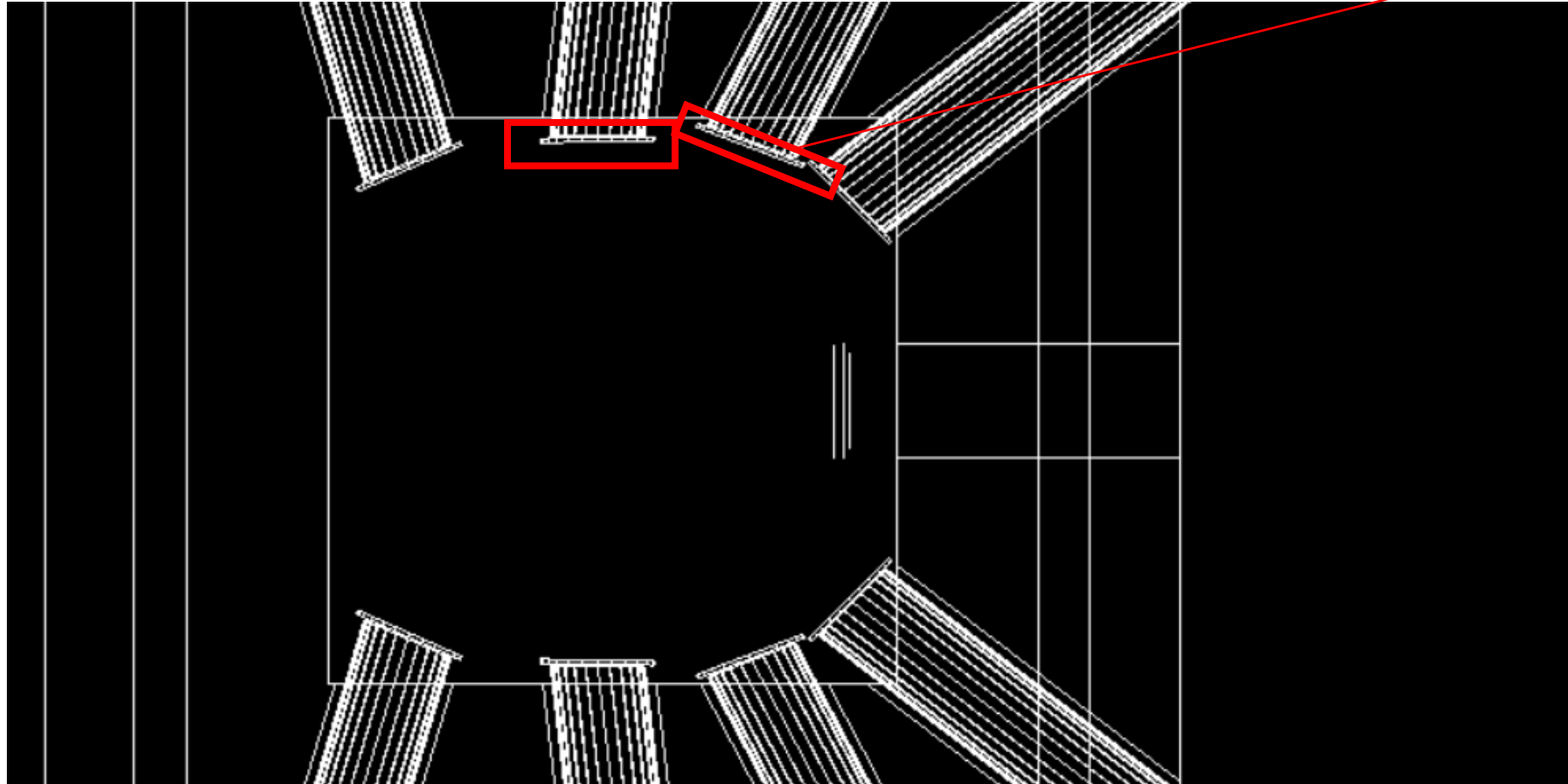
Comparison exp with MC



Normalized with height of maximum bin content

Backup

Structure for checking the Efficiency



Virtual
Sensitive
Detector

Efficiency check

- $NPE = \frac{\#Scintillation \times \text{absorption in fiber}}{\text{Attenuation in Fiber} \times PDE}$