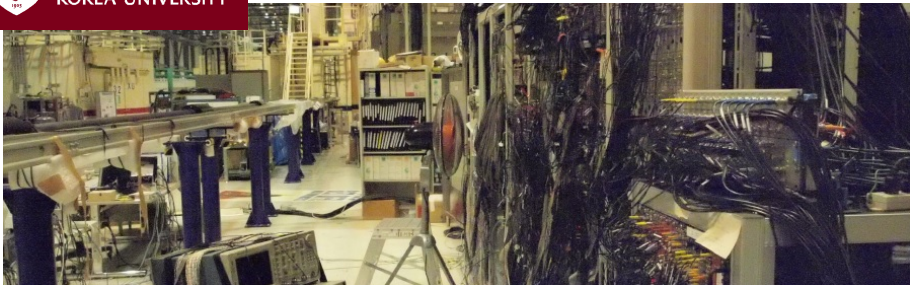




고려대학교
KOREA UNIVERSITY



HANUL Meeting

January 29, 2020

Single PE Trimmer

Board type	Old GIGA	New HTOF	E42 BH2
Trimmer value	100K → 2M	2M	100K
SPE Adjust	yes	yes	no

- New HTOF uses 2M for trimmer.
- Old giga trimmer's **ACTUAL VALUE** was 2M(100K in the circuit diagram).
- 1M trimmer is under ordering from *Eleparts* to test with BH2 board.(No 2M with same footprint)

E42 BH2 Crosstalk

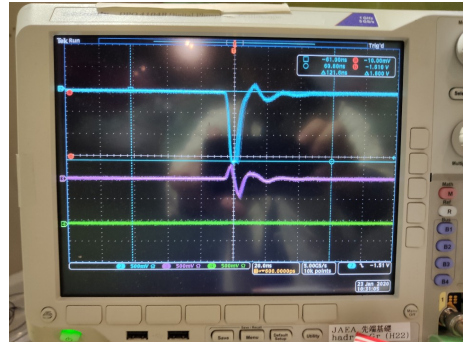
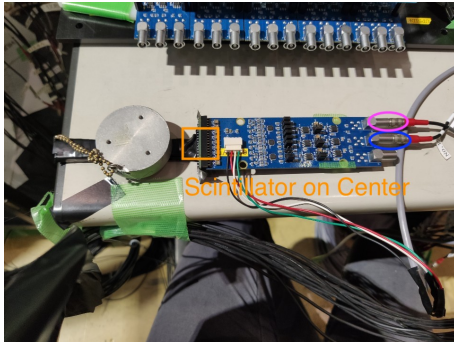


Figure: Scintillator signal(Blue) vs Crosstalk signal(Purple)

Cause of the Crosstalk

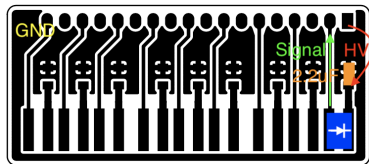
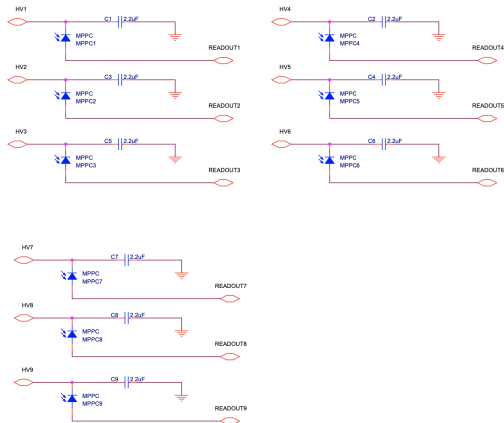


Figure: Board Geometry; Black regions are the conductor.

- The ground of MPPCs are shared.

No crosstalk case (Almost zero, $\leq 5\%$)

