

# Physics Energy distribution(4)

2019 Summer Work

# Good Run List

<b>RUN81</b>	30228 ~ 31363	554 EA
<b>RUN82</b>	31568 ~ 32201	331 EA
<b>TOTAL</b>	30228 ~ 32201	885 EA

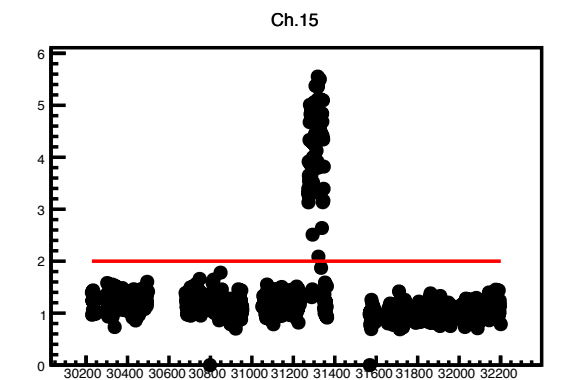
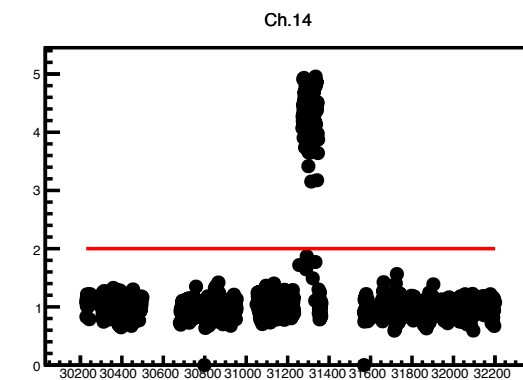
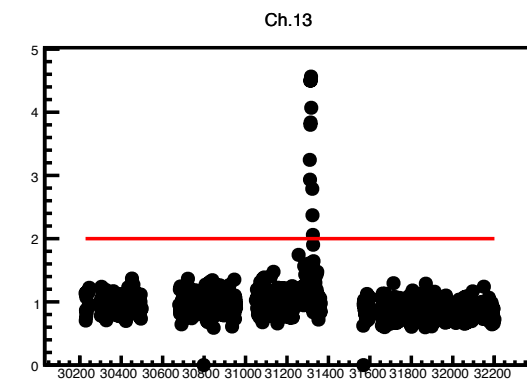
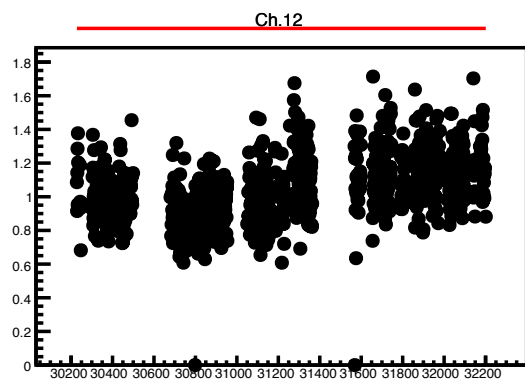
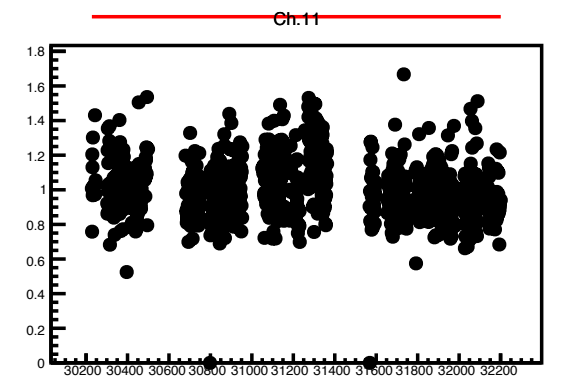
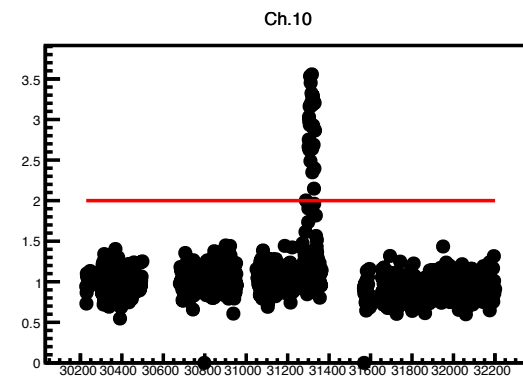
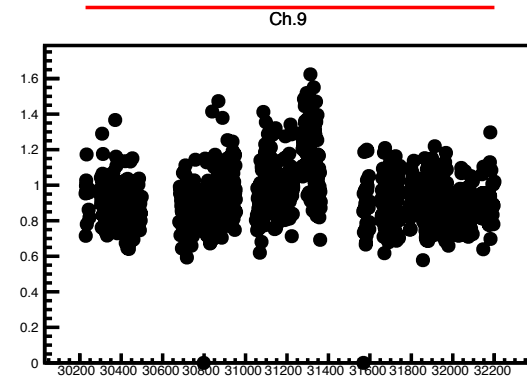
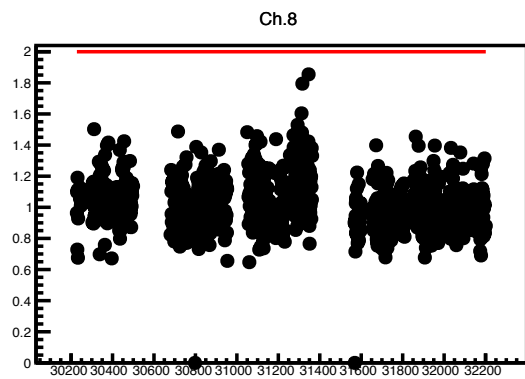
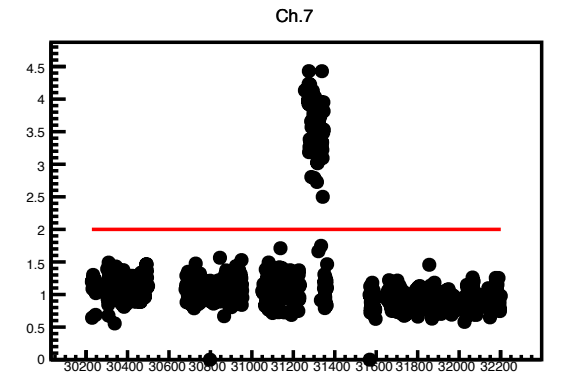
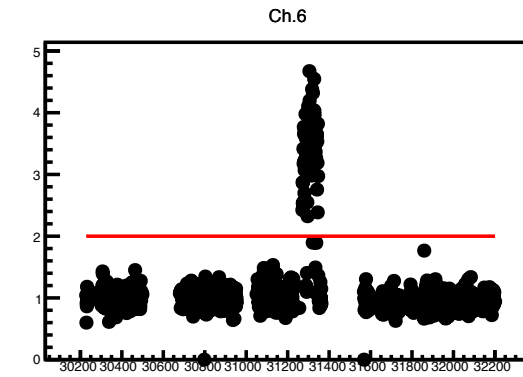
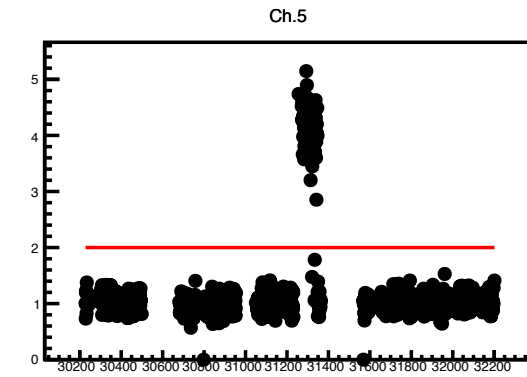
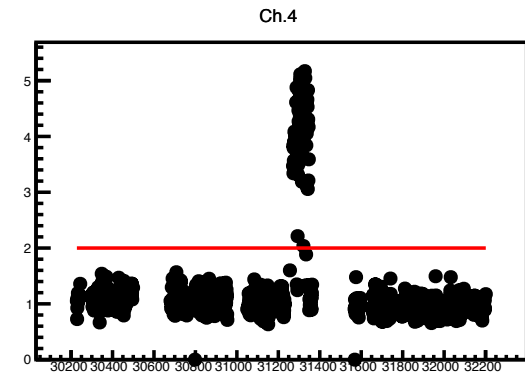
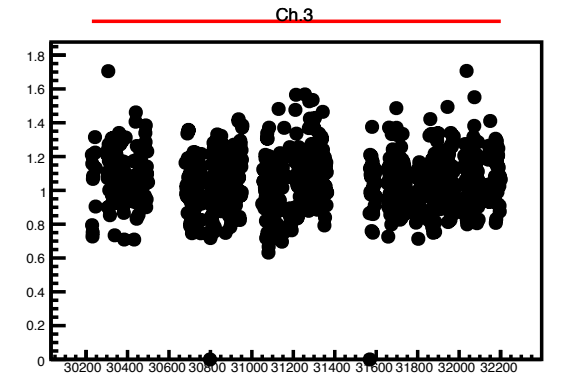
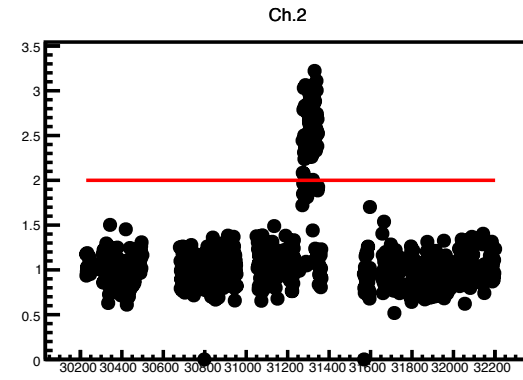
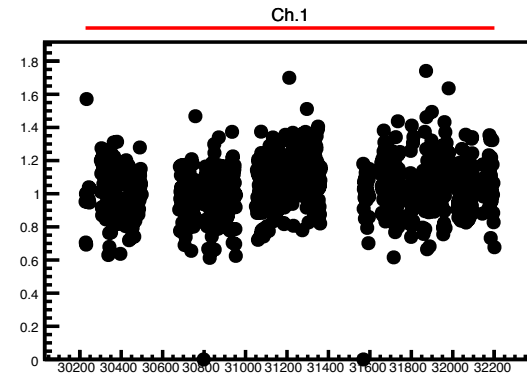
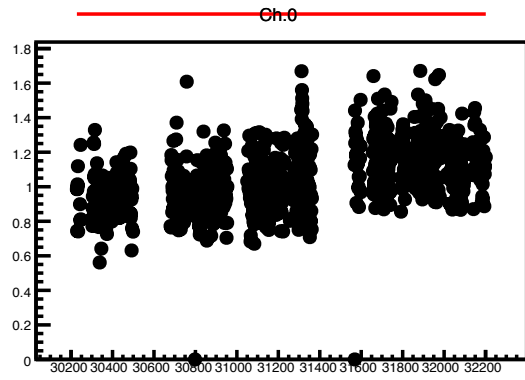
# Run number that have no events

30349	30360	30376	30385
30386	30387	30392	30394
30401	30402	30403	30404
30405	30406	30407	30408
30409			



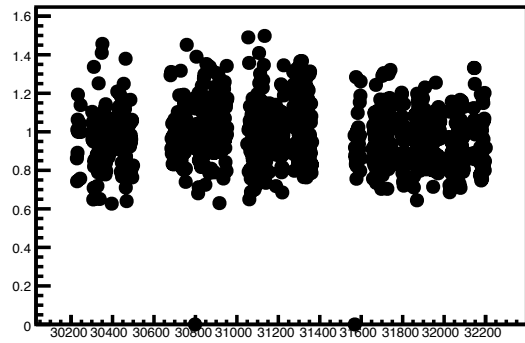
There is no DST file.

# Chi Square (Fitting range : 0.5~10)

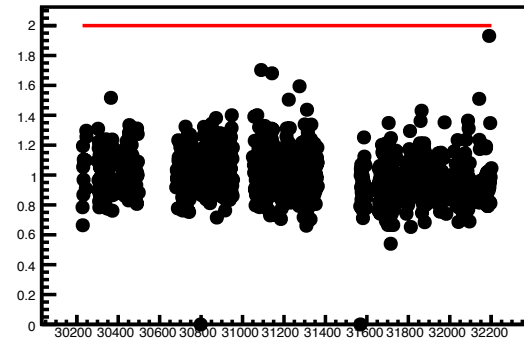


# Chi Square (Fitting range : 0.5 ~ 10)

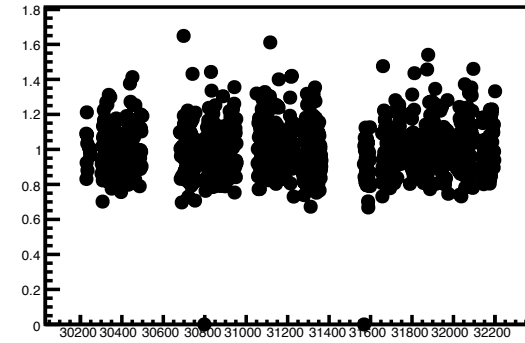
Ch.16



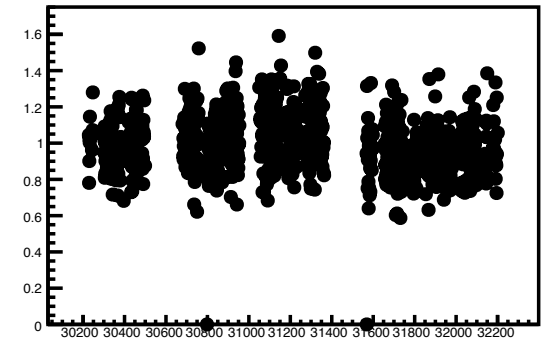
Ch.17



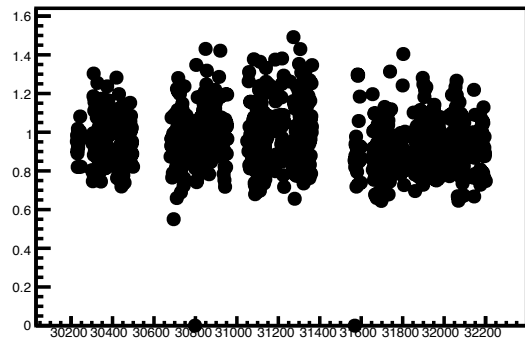
Ch.18



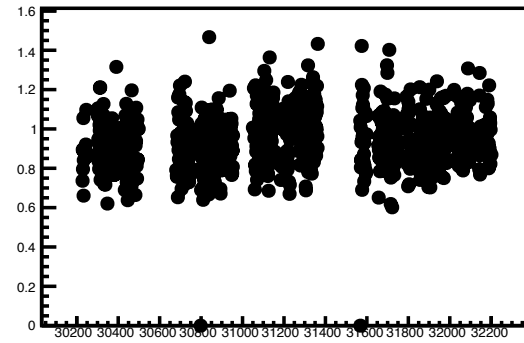
Ch.19



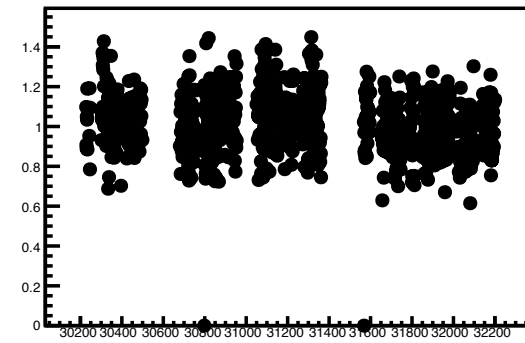
Ch.20



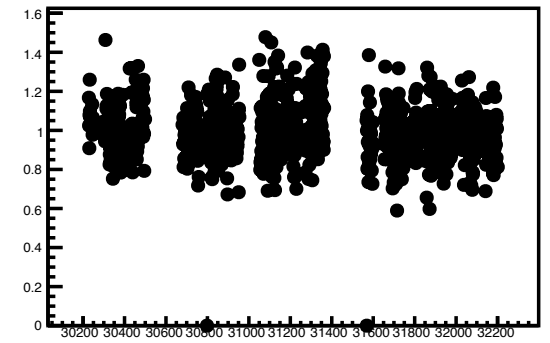
Ch.21



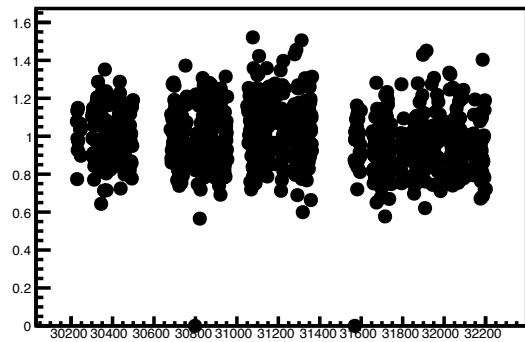
Ch.22



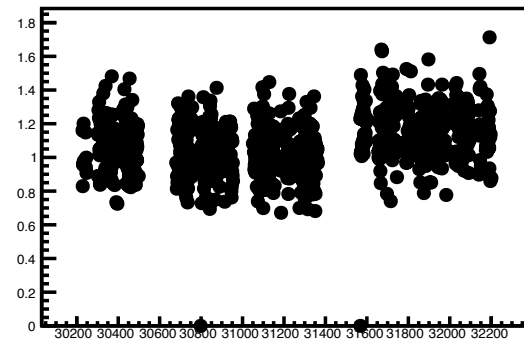
Ch.23



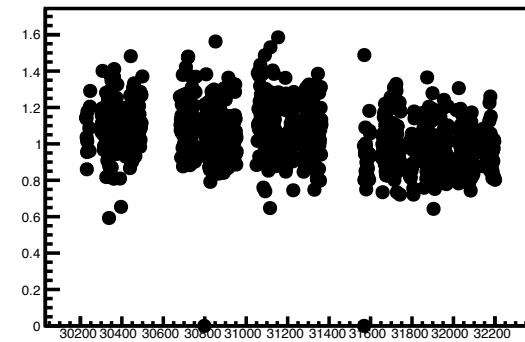
Ch.24



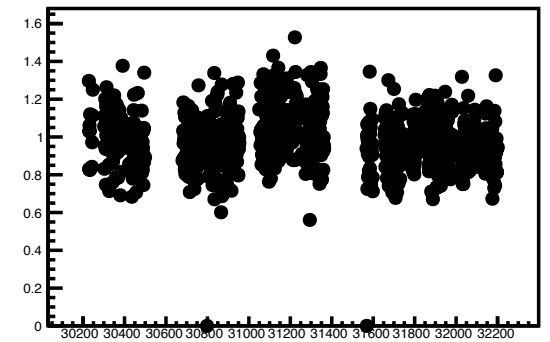
Ch.25



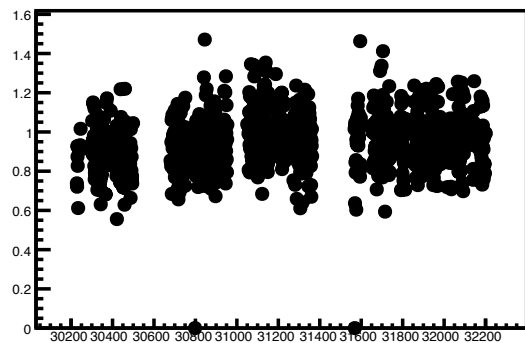
Ch.26



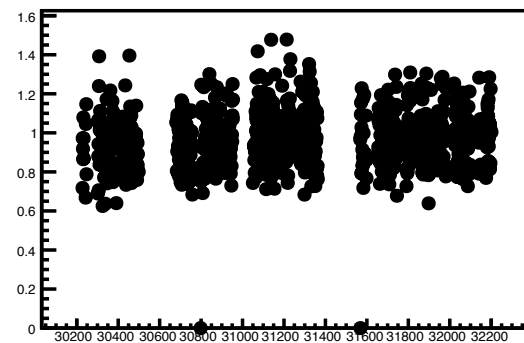
Ch.27



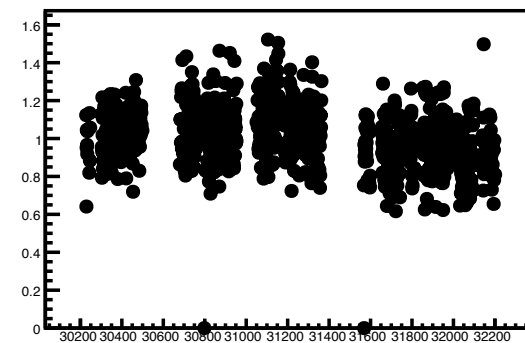
Ch.28



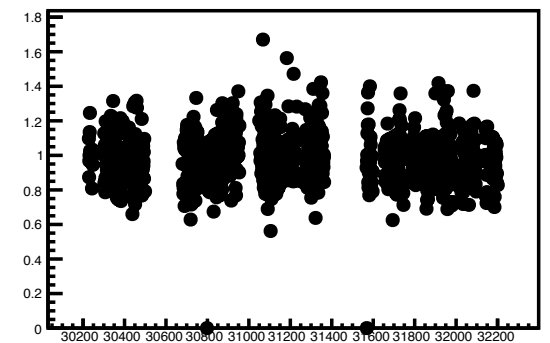
Ch.29



Ch.30



Ch.31



# High chi square

Ch.2	31271 ~ 31347
Ch. 4	31271 ~ 31347
Ch. 5	31256, 31271 ~ 31347
Ch. 6	31271 ~ 31347
Ch. 7	31256, 31271 ~ 31347
Ch. 10	31301 ~ 31332
Ch. 13	31310 ~ 31325
Ch. 14	31271 ~ 31347
Ch. 15	31271 ~ 31347

312549 Magnet\_Setting\_Rate\_Study  
 31250 ~ 31255 D1magnet\_test  
 31265~ 31270 DVU\_AlTarget\_with\_PS

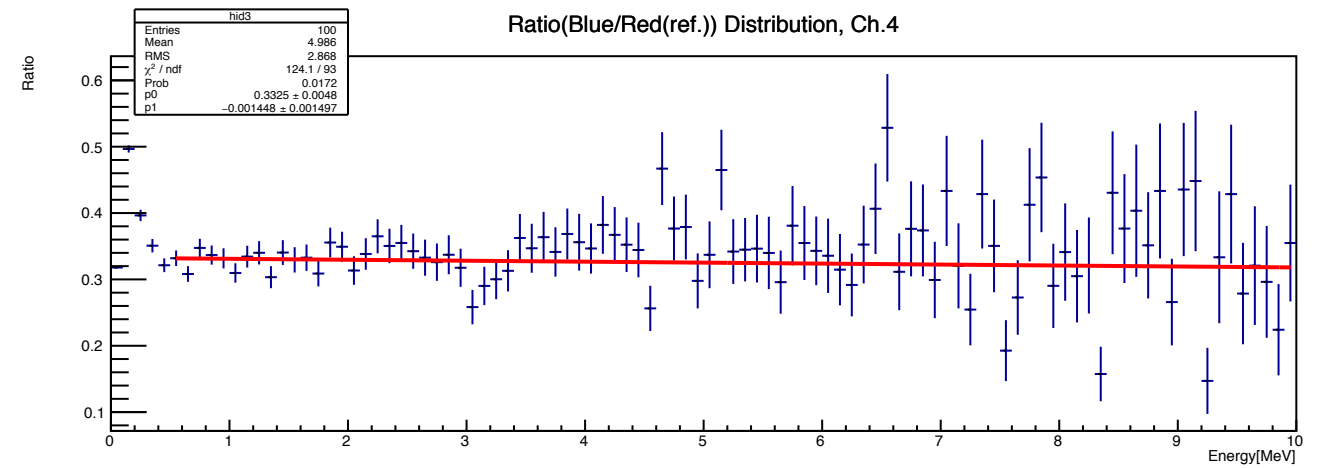
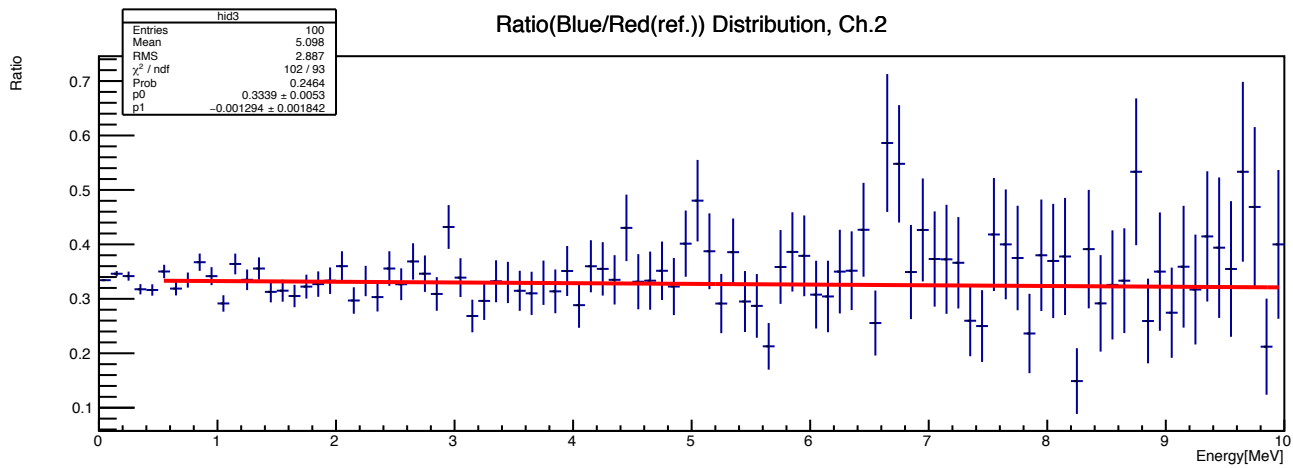
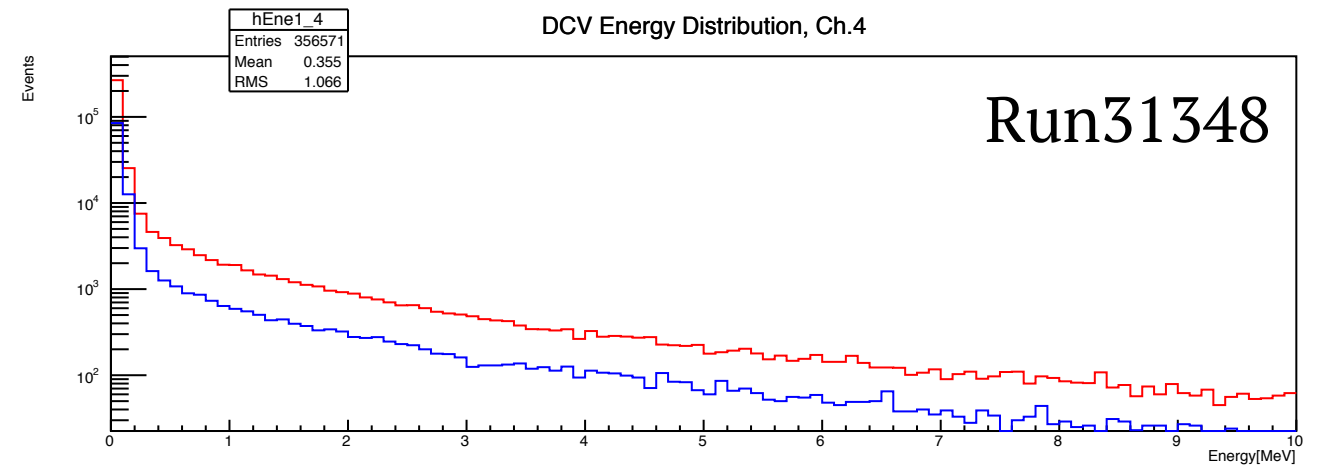
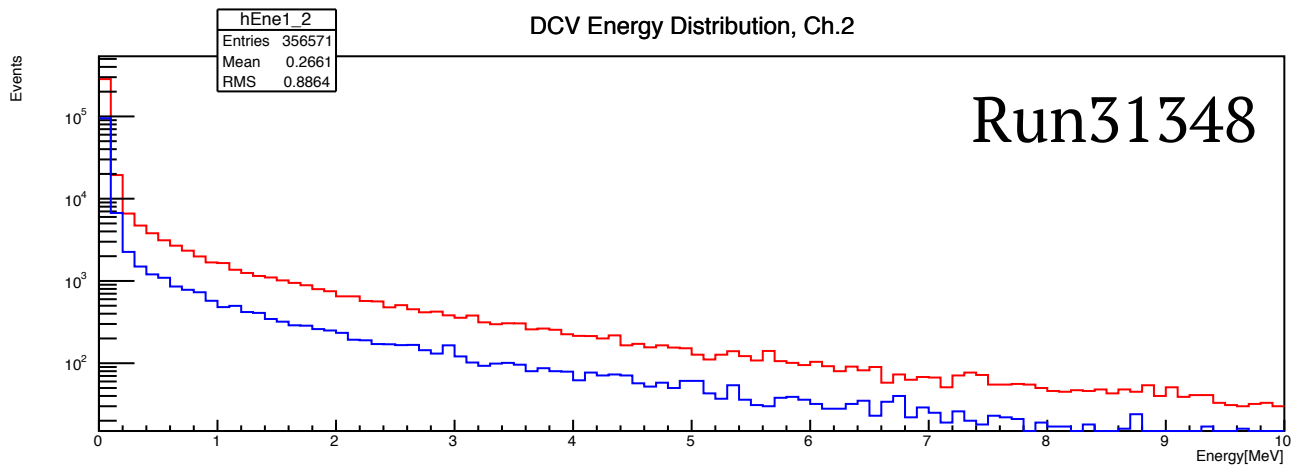
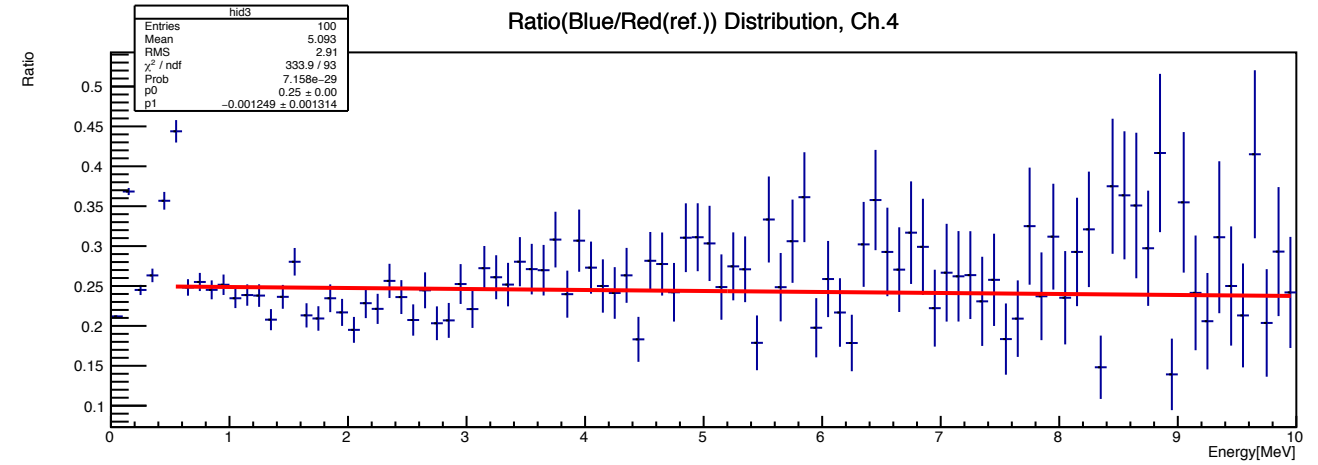
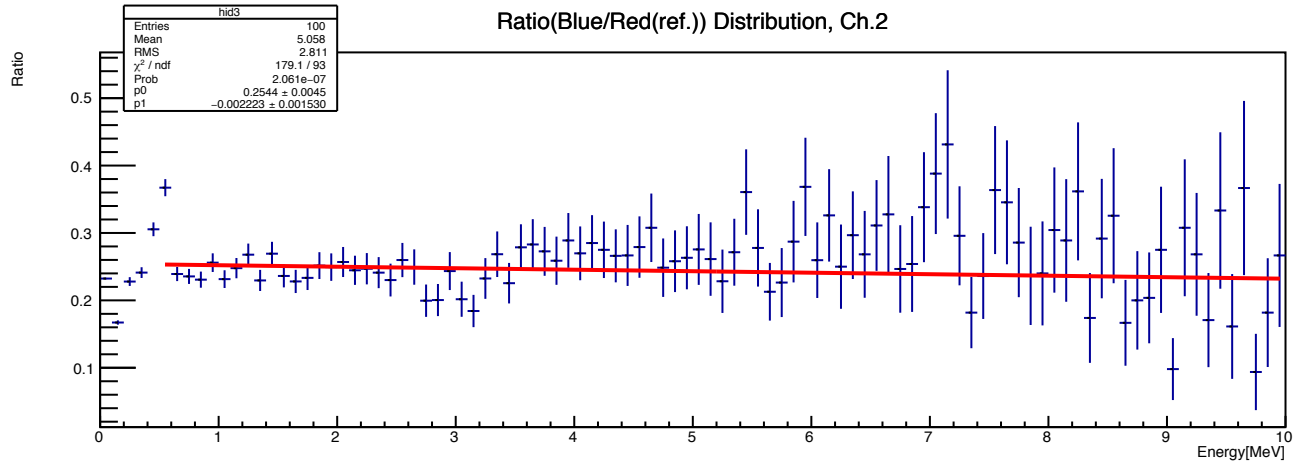
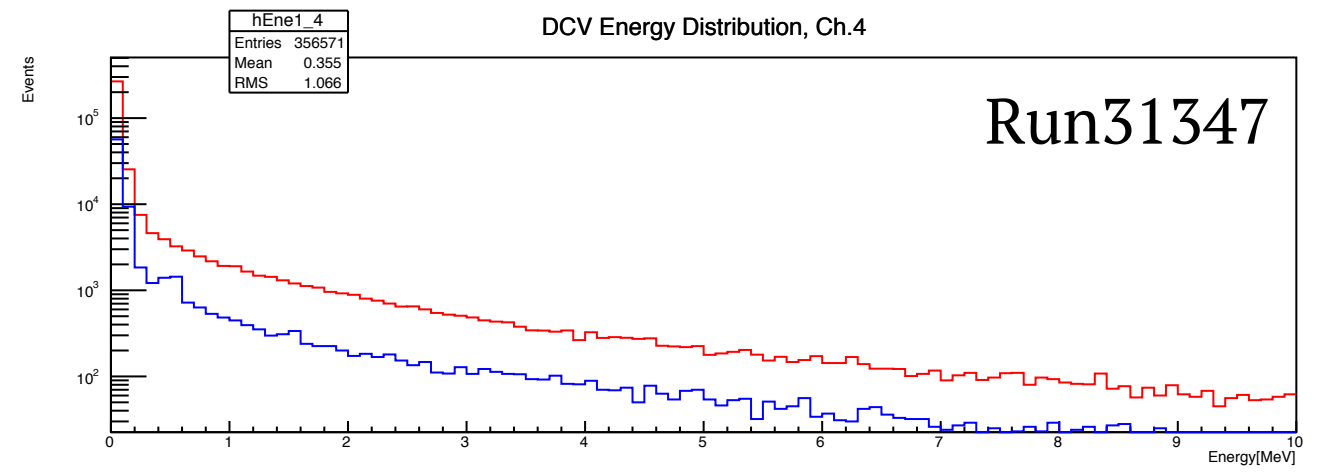
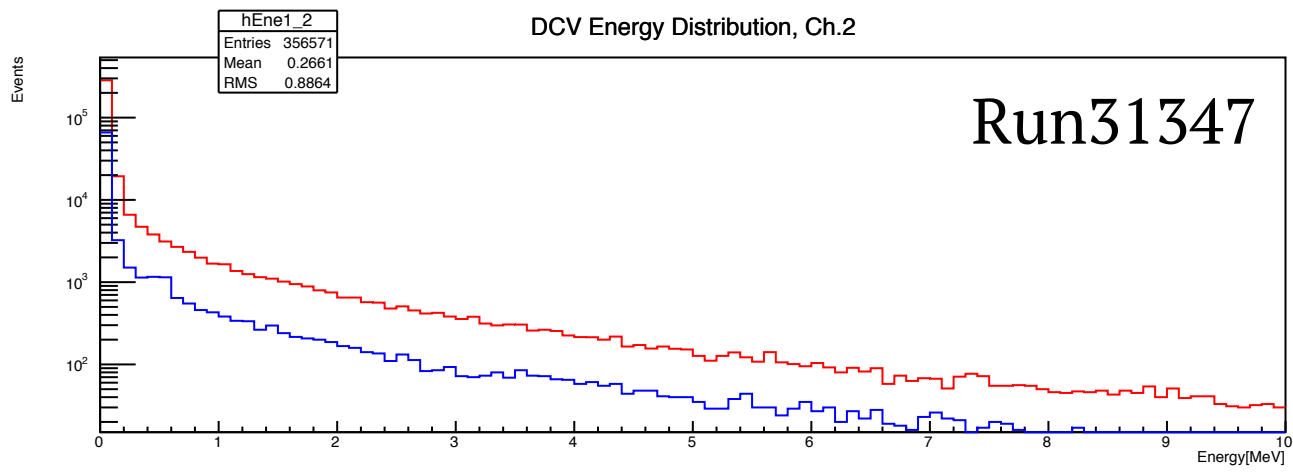
31271(2019-03-15, 05:27:18 ~)  
 31347(~ 2019-03-17, 13:22:06)

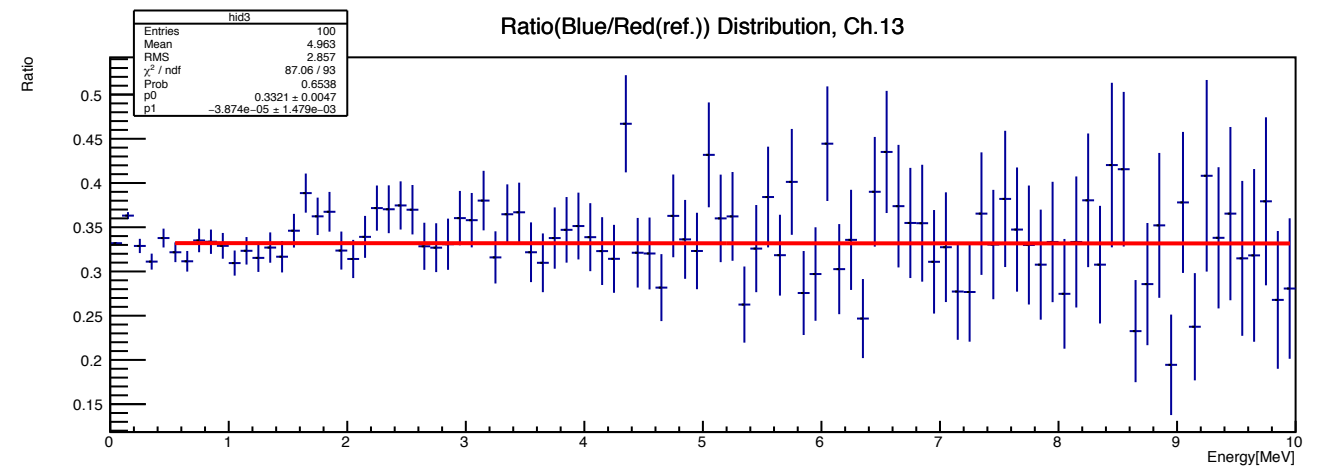
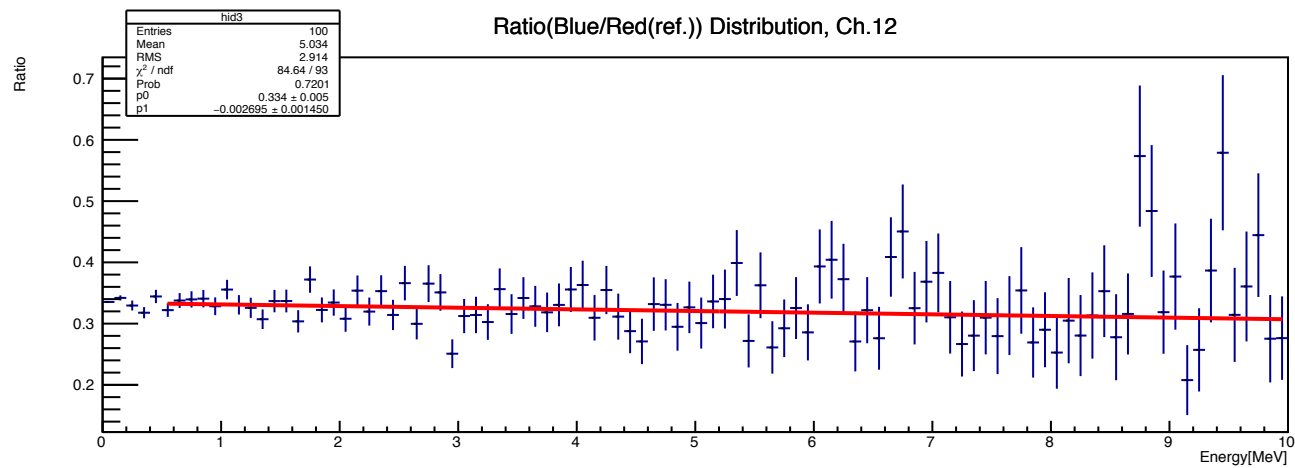
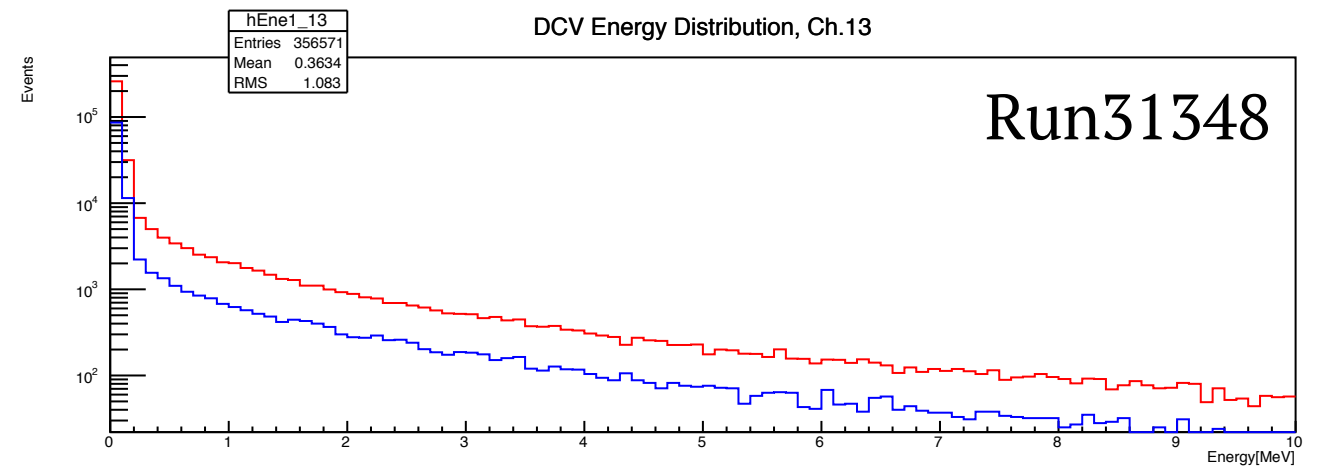
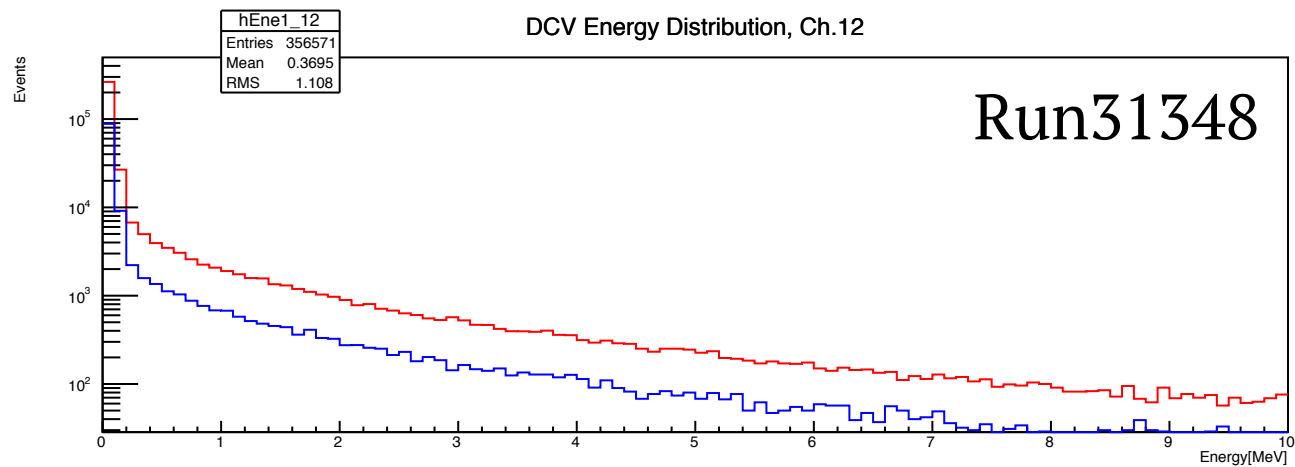
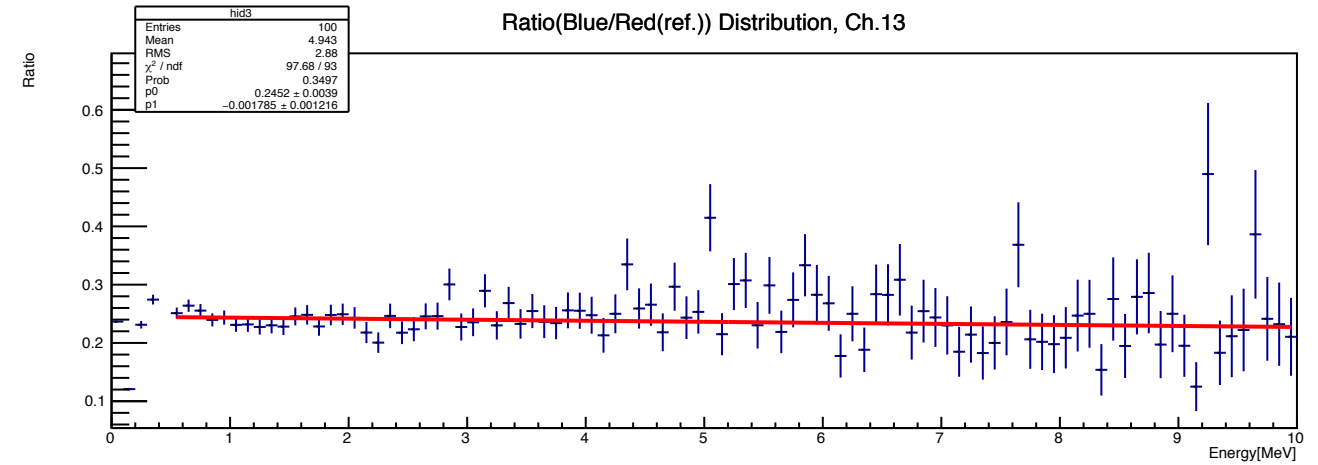
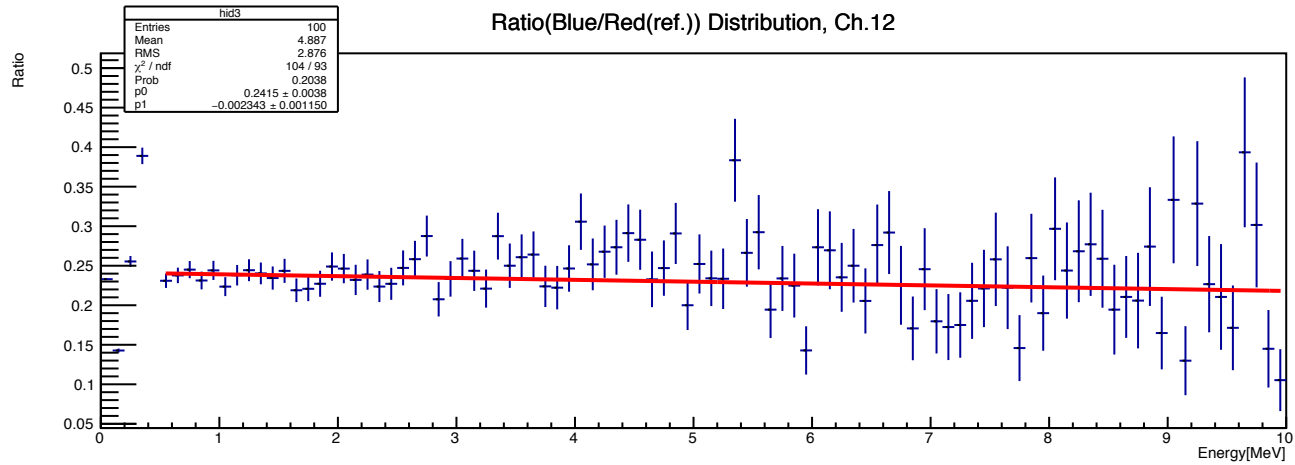
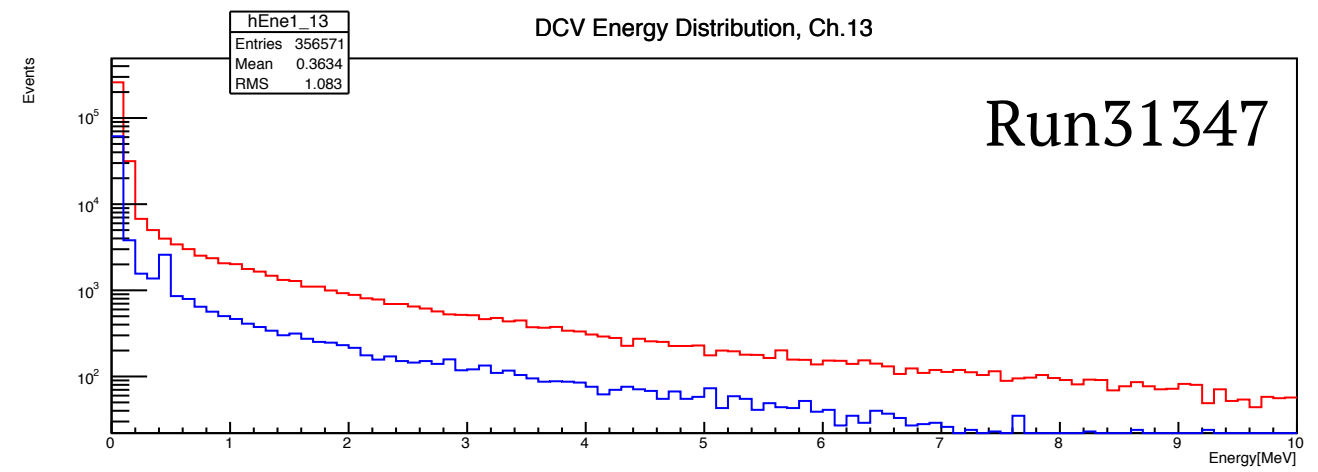
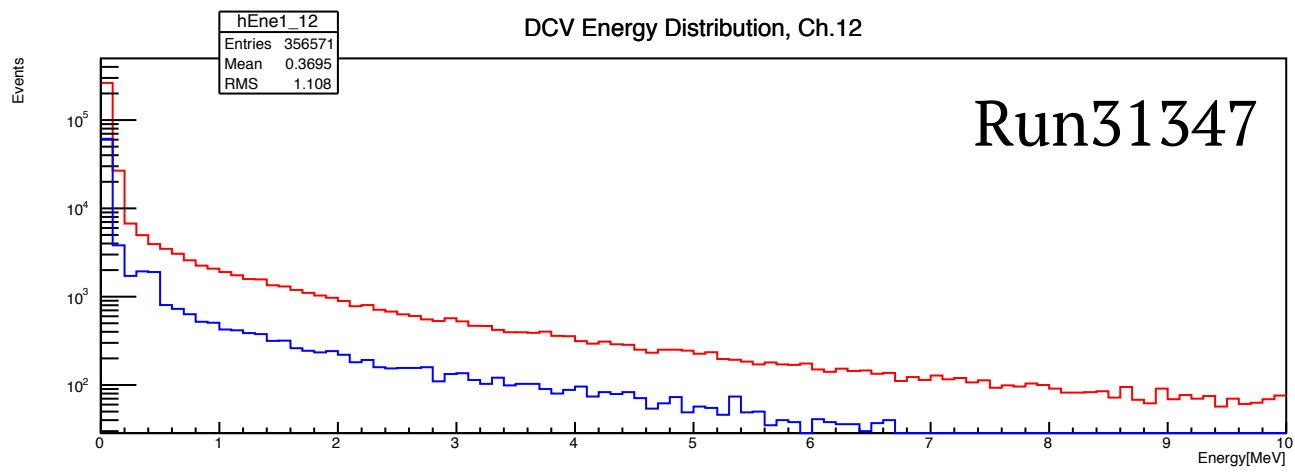
13:20 Run 31347 started  
 13:22 stopped 173 spills

13:21 Beam stopped to change K1.8/K1.8BR momentum  
 - 13:25  $1.4 \text{ GeV}/c \text{ (K1.8)} \rightarrow -0.7 \text{ GeV}/c \text{ (K1.8BR)}$

---

13:25 Run 31348 started  
 14:09 ended

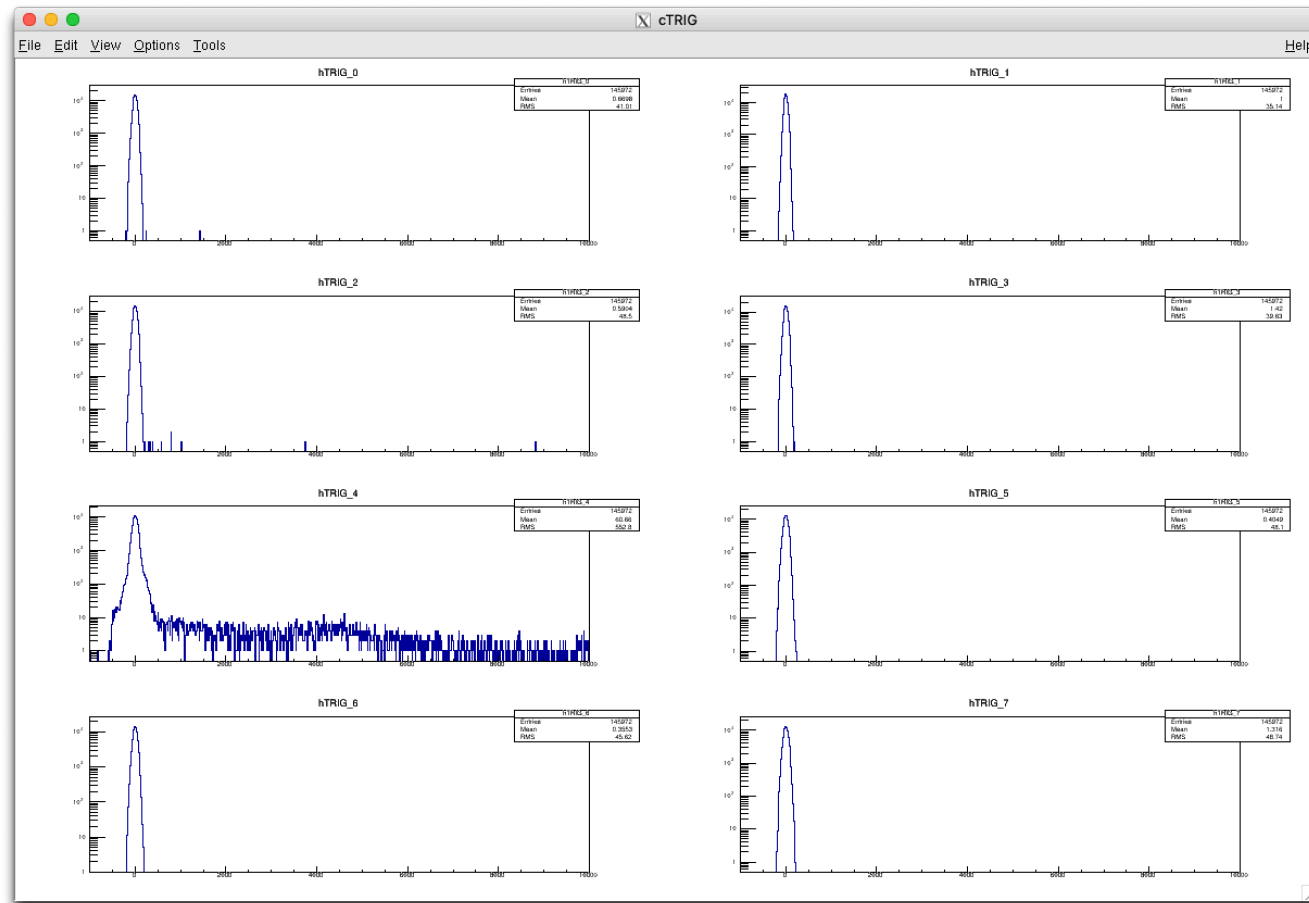




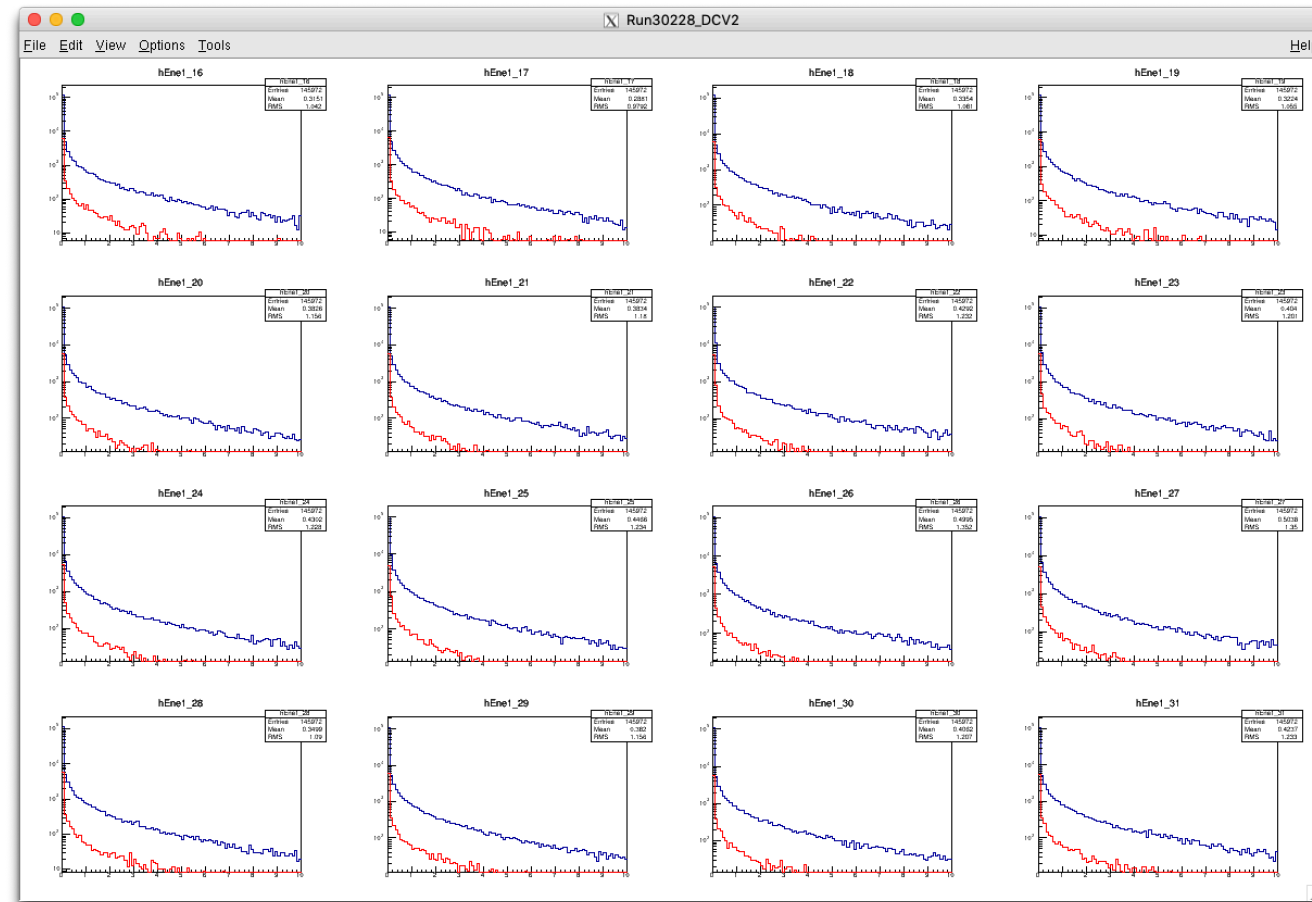
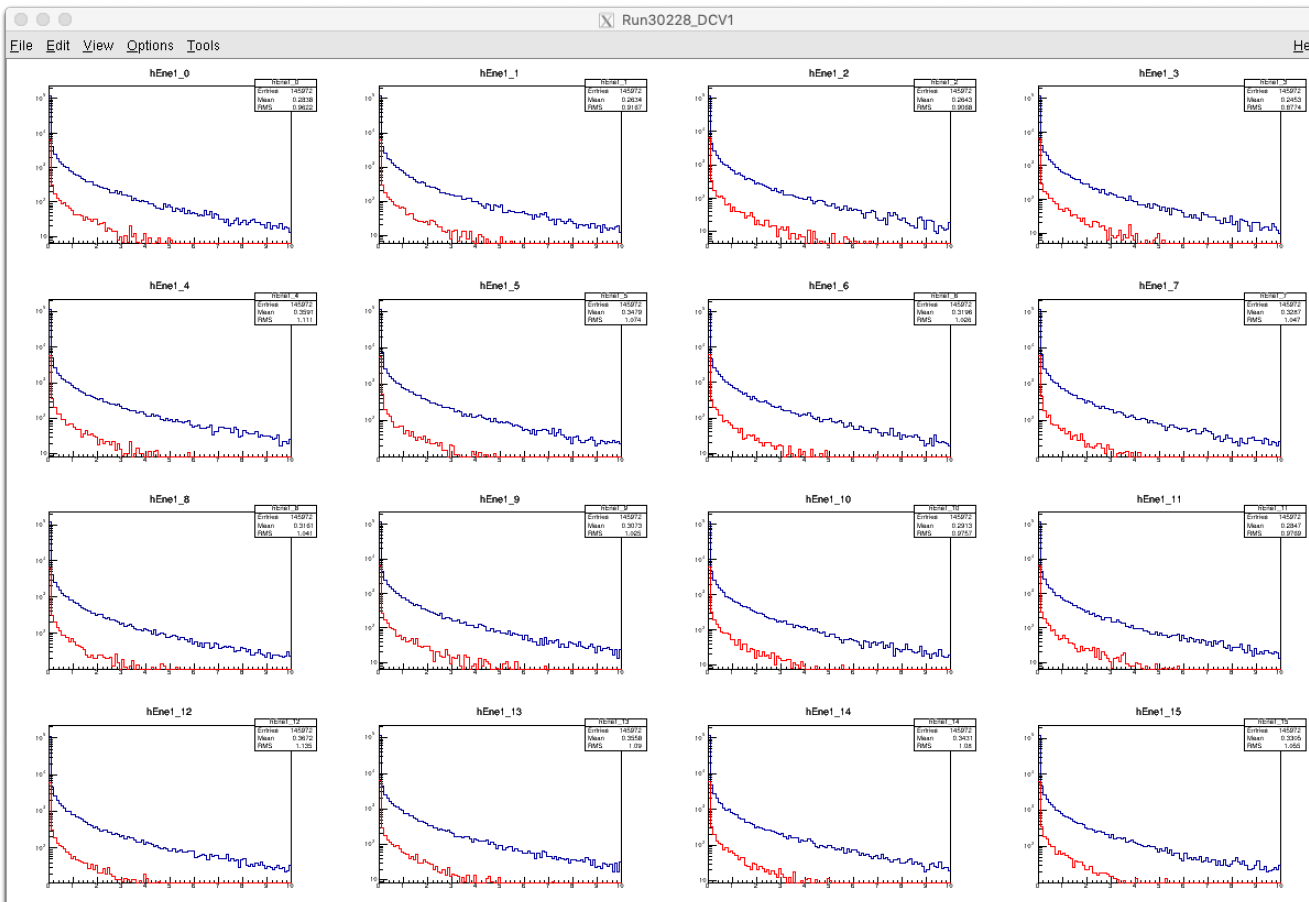


# TRIGGER TAG[4]?

Run30228

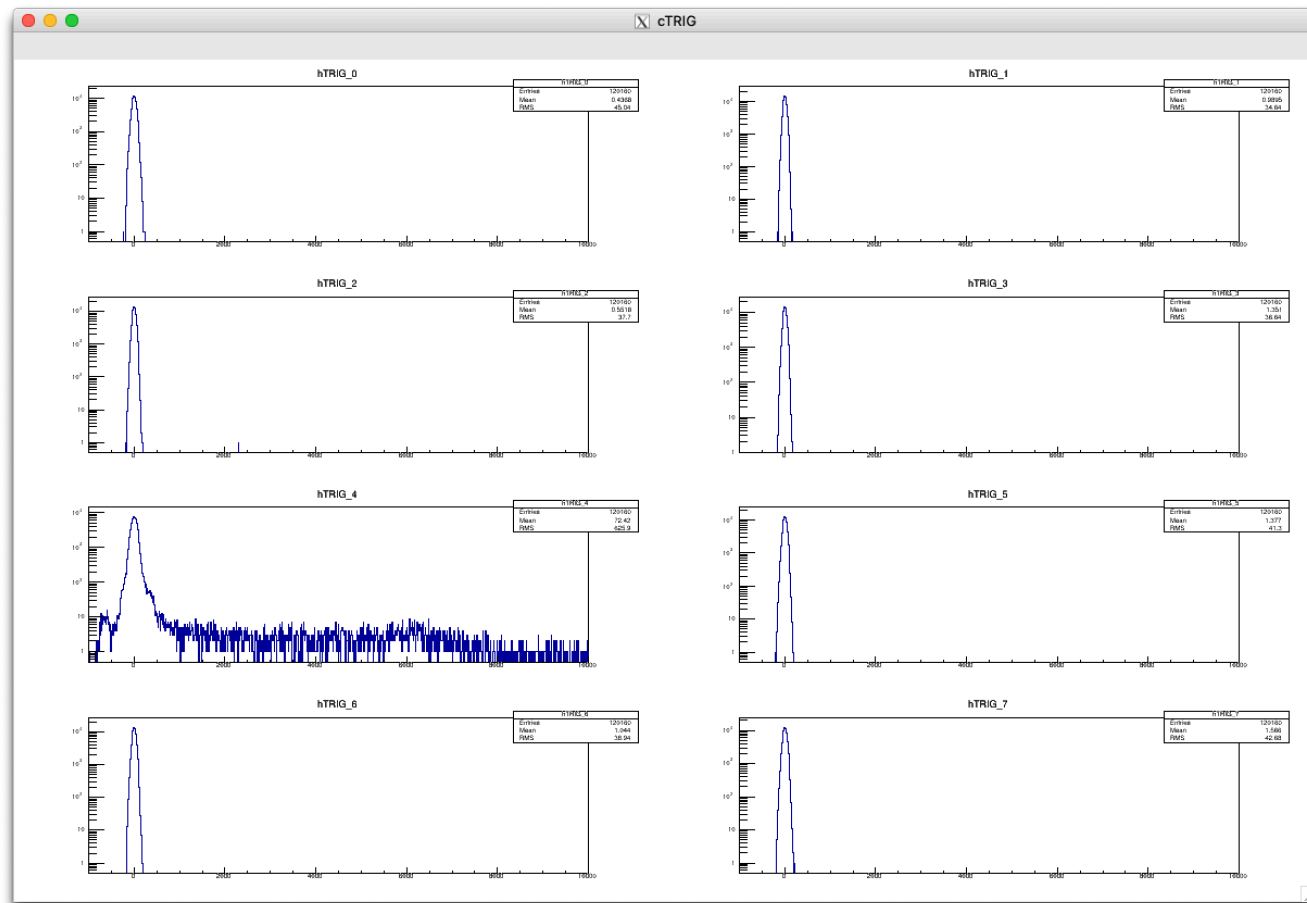


TRIGGER TAG Integrated ADC[4] > 500

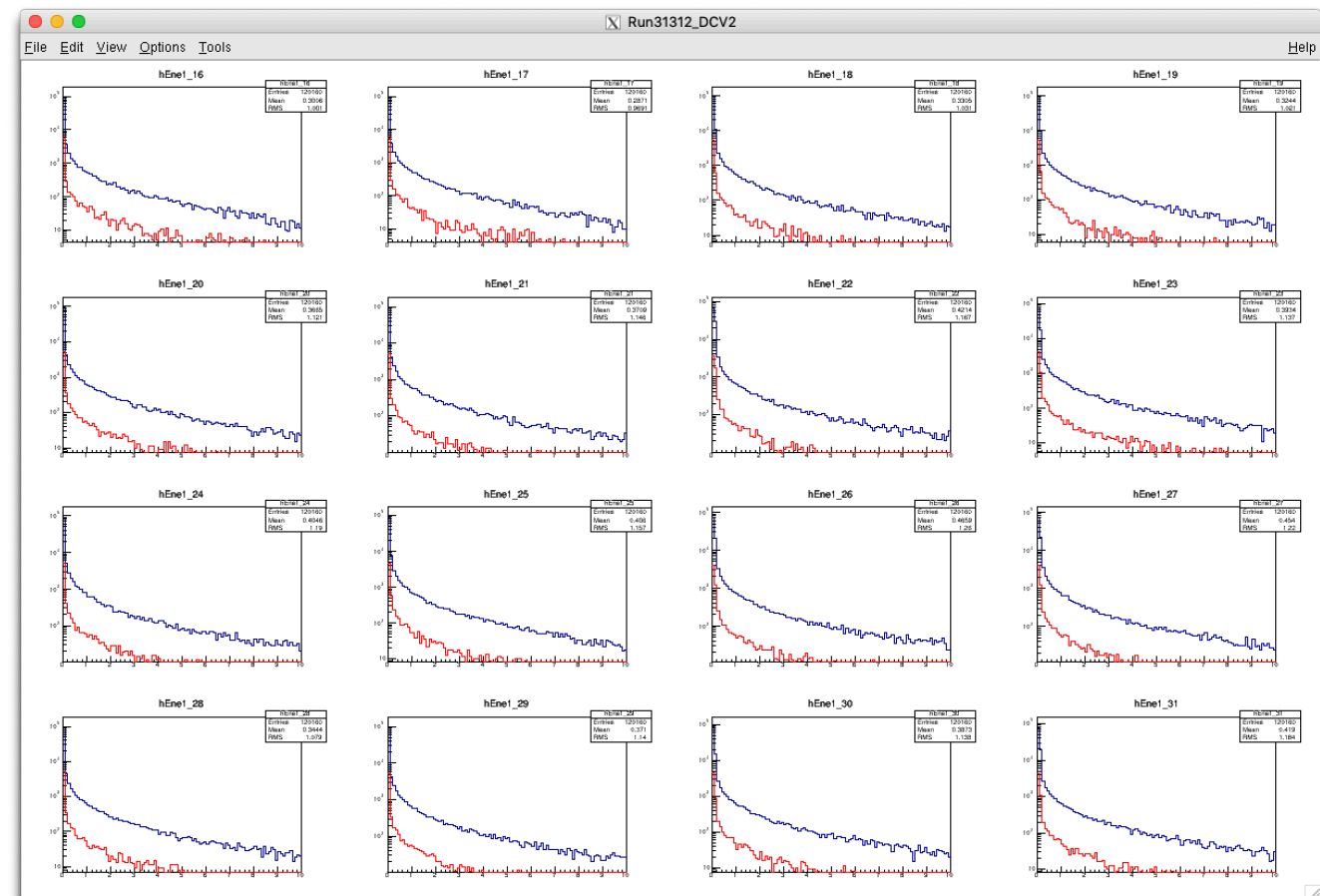
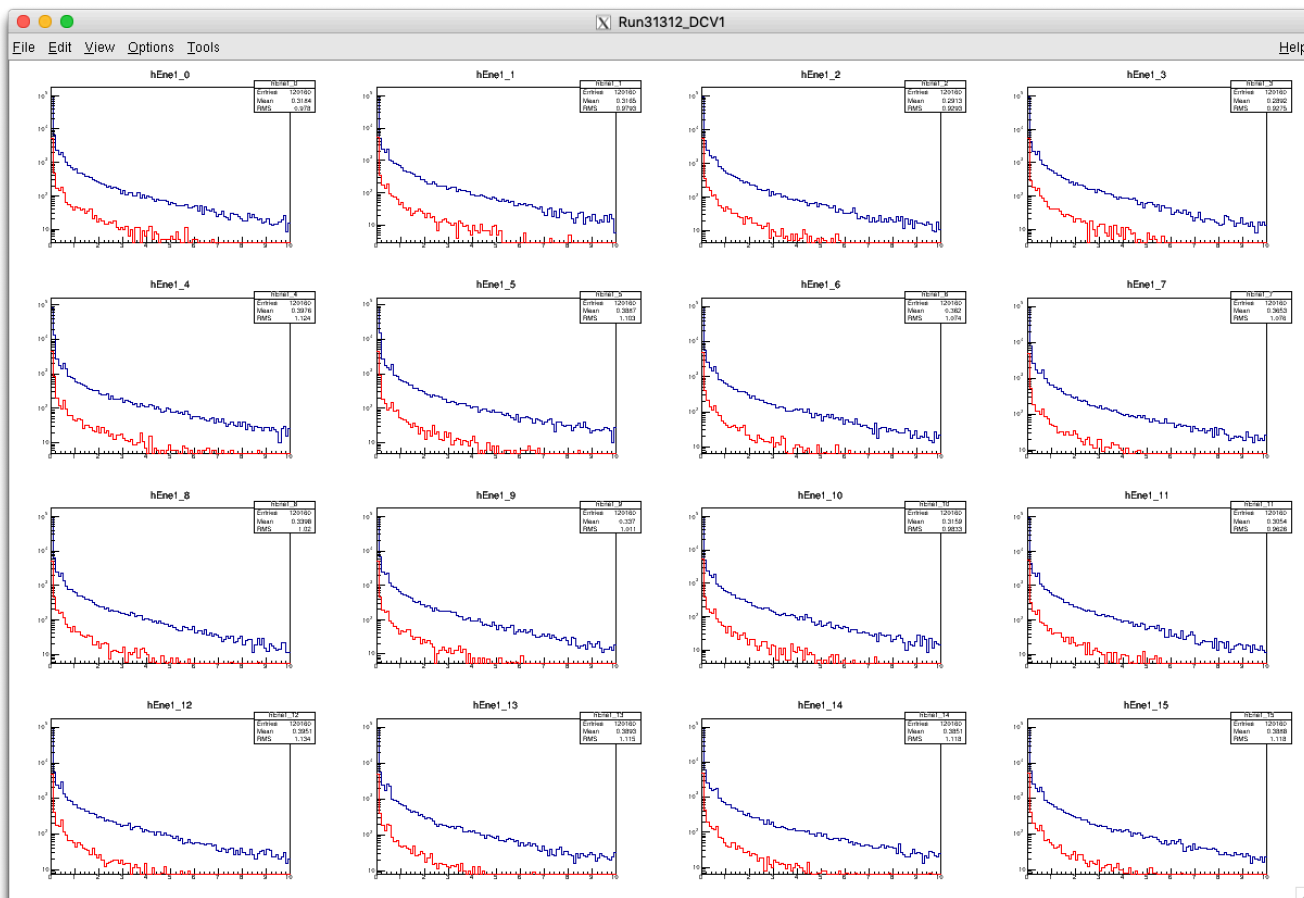


# TRIGGERTAG[4]?

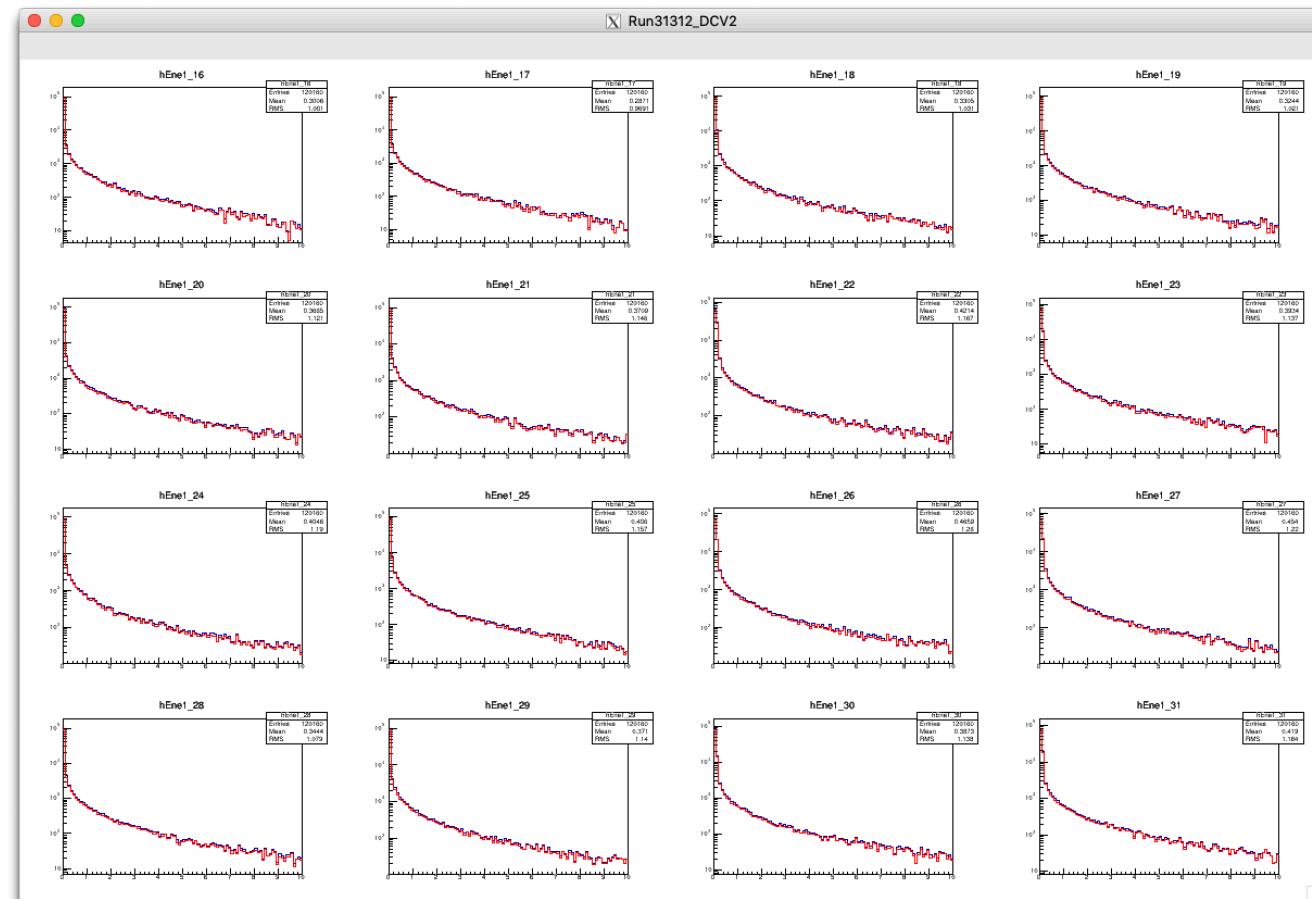
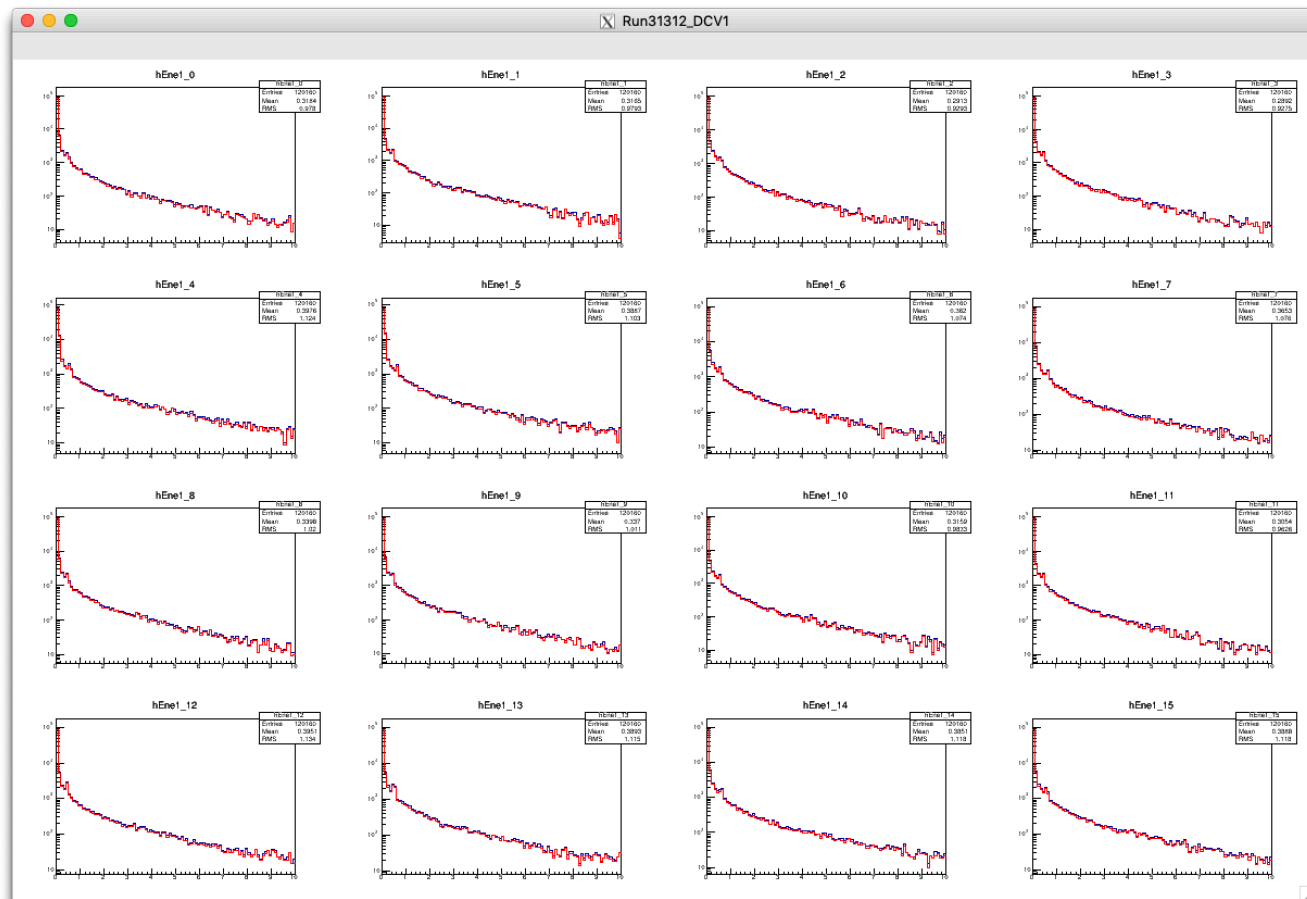
Run31312



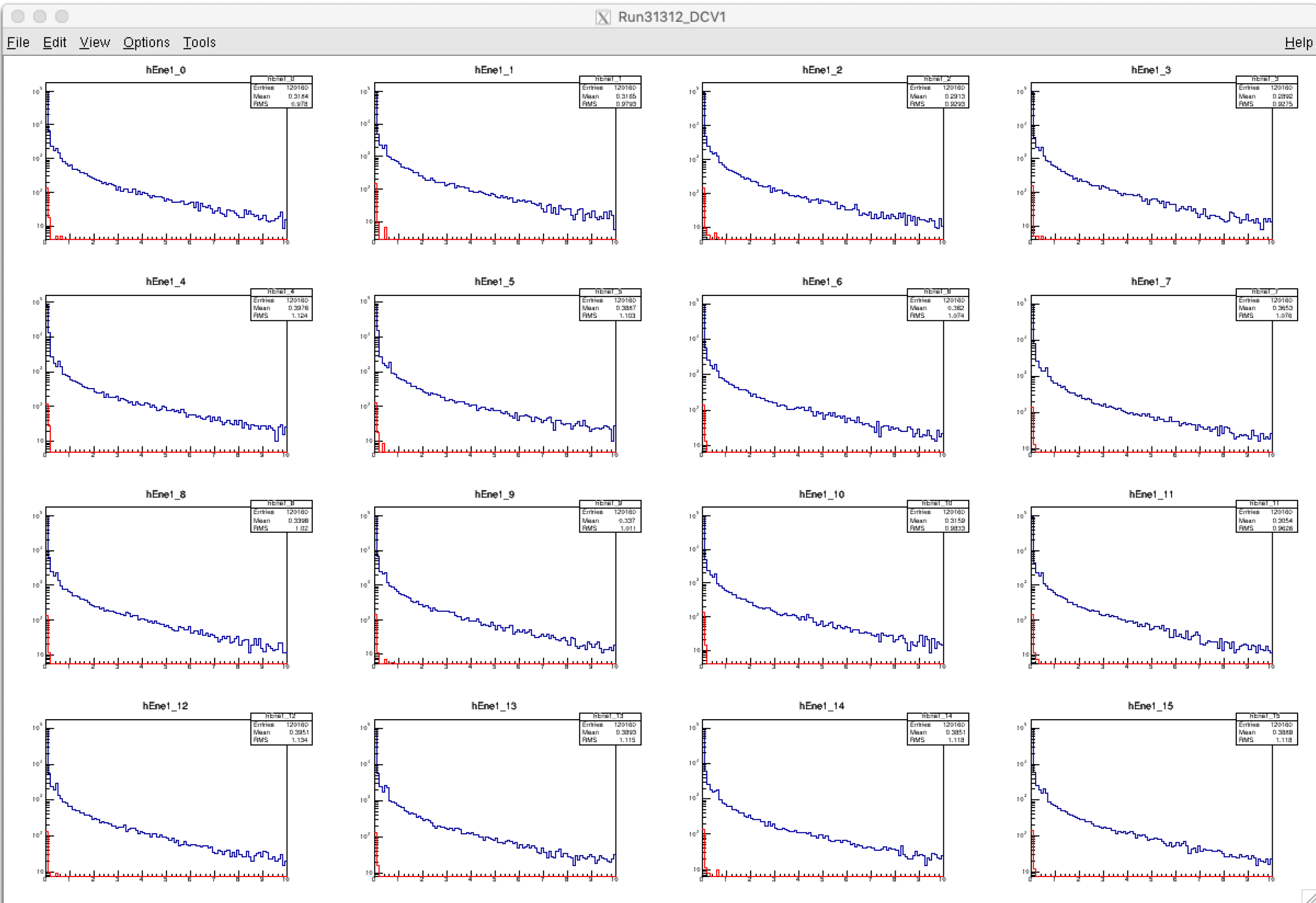
TRIGGERTAGIntegratedADC[4] > 500



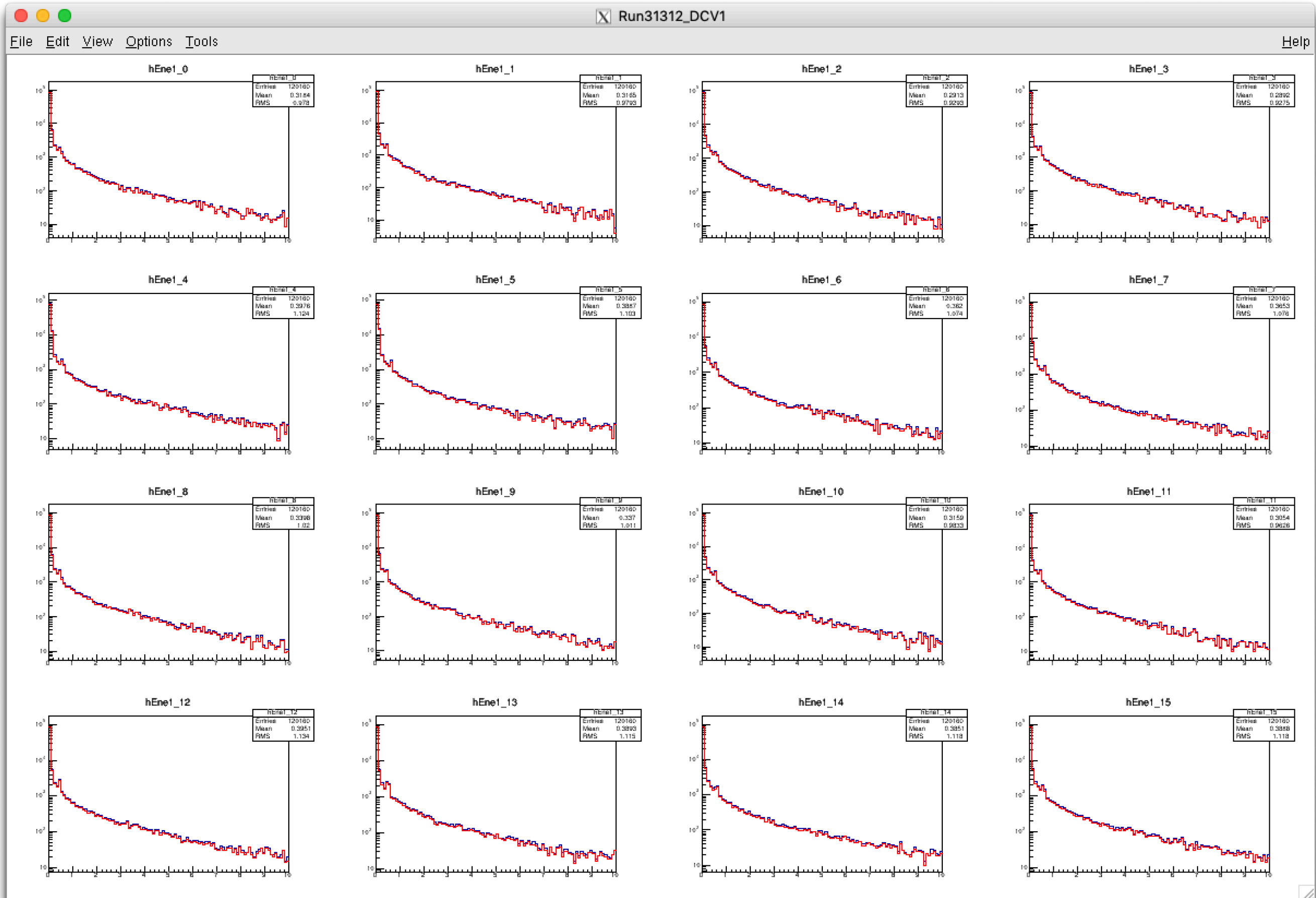
# TRIGGERTAGIntegratedADC[4] < 500



# TRIGGERTAGIntegratedADC[4] < -500



# TRIGGERTAGIntegratedADC[4] > -500 && TRIGGERTAGIntegratedADC[4] < 500

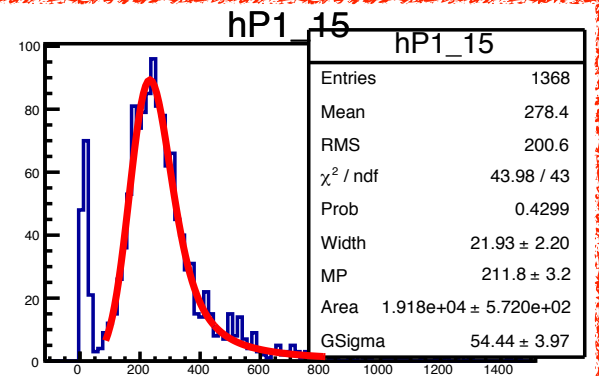
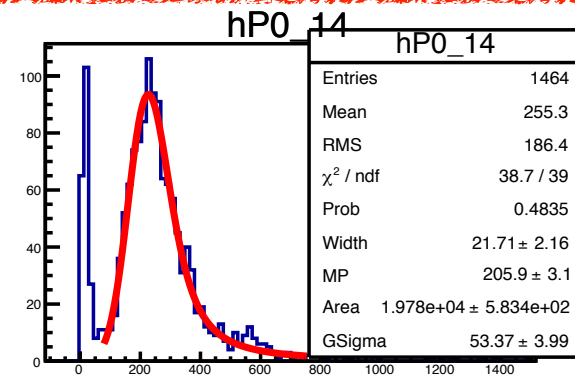
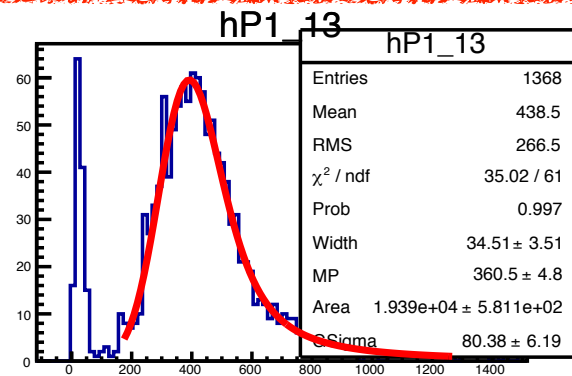
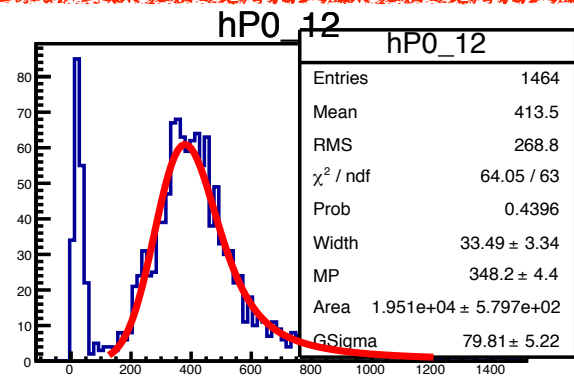
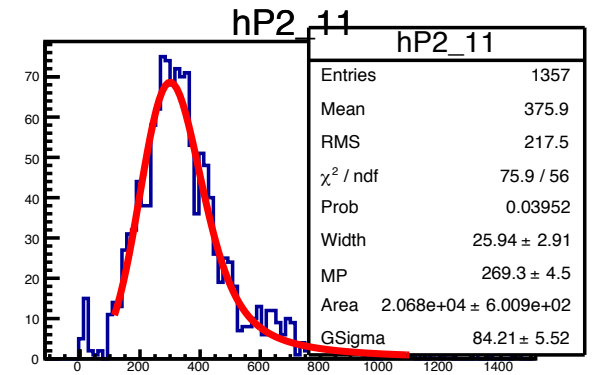
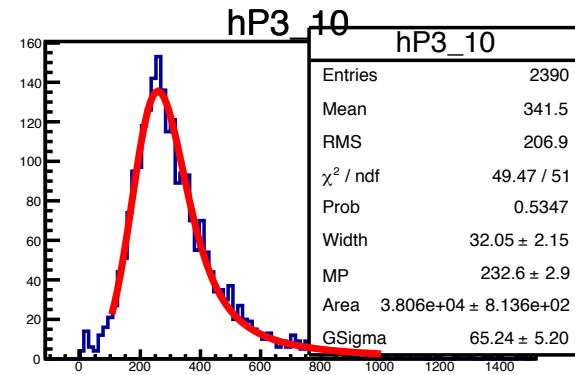
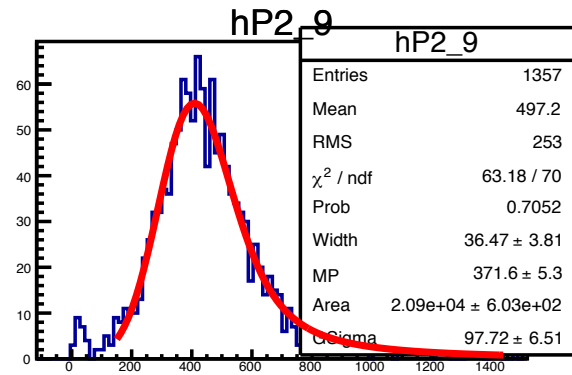
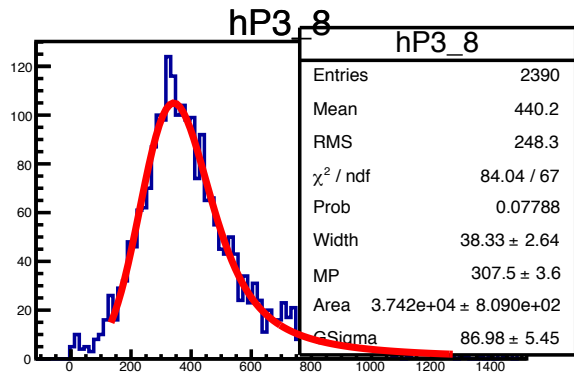
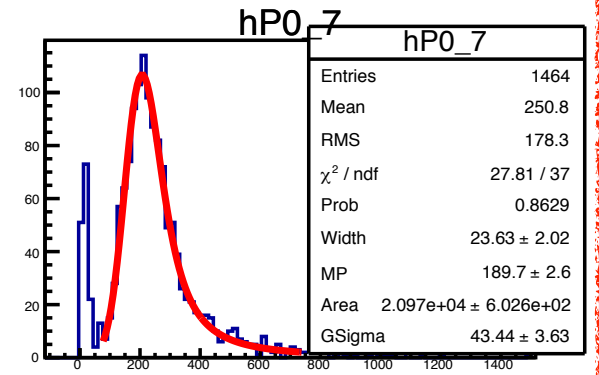
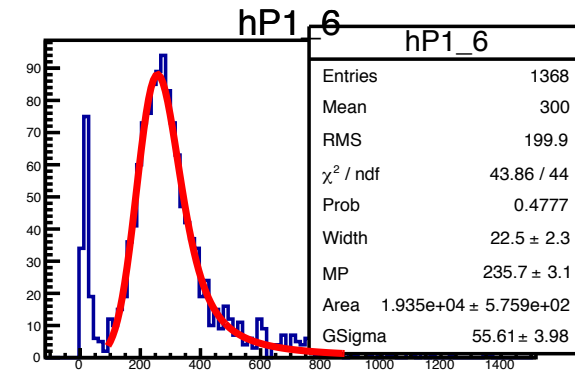
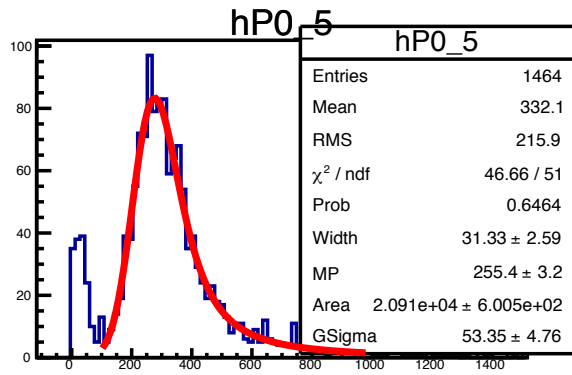
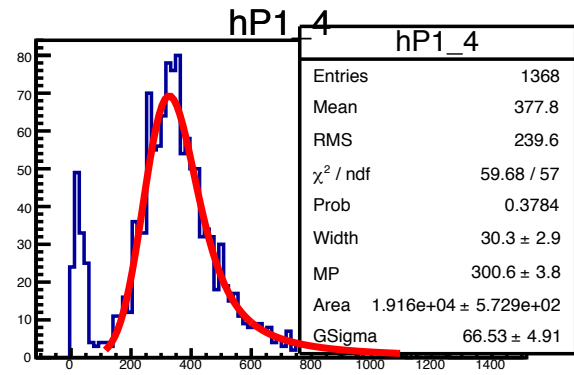
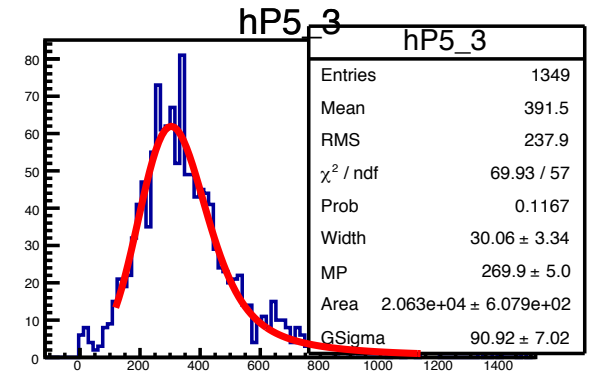
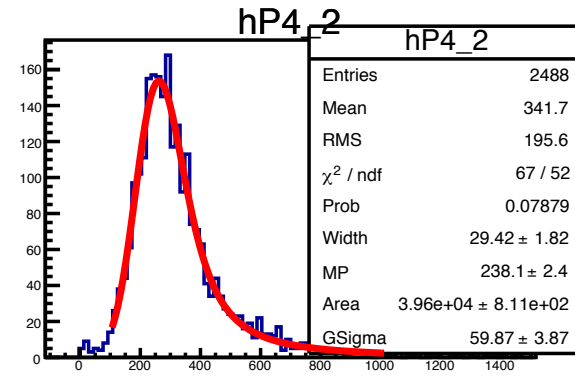
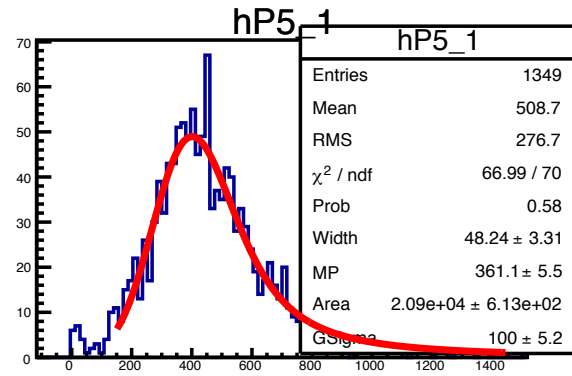
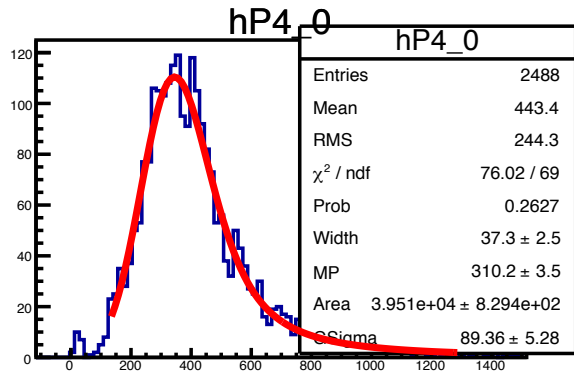


# Cosmic ray cross tracking, Period6 (Run82)

```
//Flag for Top & Bottom Cross
if( (hit_04[12]==1 || hit_04[13]==1 || hit_04[26]==1 || hit_04[27]==1 || hit_04[40]==1 || hit_04[41]==1)
    && (hit_04[10]==1 || hit_04[11]==1 || hit_04[24]==1 || hit_04[25]==1 || hit_04[38]==1 || hit_04[39]==1)
    && (hit_04[8]==1 || hit_04[9]==1 || hit_04[22]==1 || hit_04[23]==1 || hit_04[36]==1 || hit_04[37]==1)
    && (hit_04[4]==1 || hit_04[5]==1 || hit_04[18]==1 || hit_04[19]==1 || hit_04[32]==1 || hit_04[33]==1)
    && (hit_04[2]==1 || hit_04[3]==1 || hit_04[16]==1 || hit_04[17]==1 || hit_04[30]==1 || hit_04[31]==1)
    && (hit_04[0]==1 || hit_04[1]==1 || hit_04[14]==1 || hit_04[15]==1 || hit_04[28]==1 || hit_04[29]==1)
    && VetoFlag04[0]==0 && VetoFlag04[1] == 0) TrFlag04[6]=1;

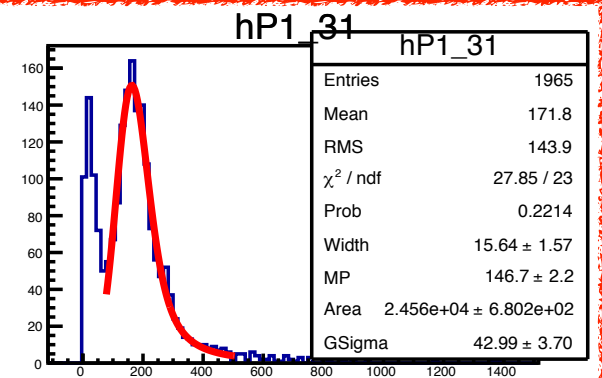
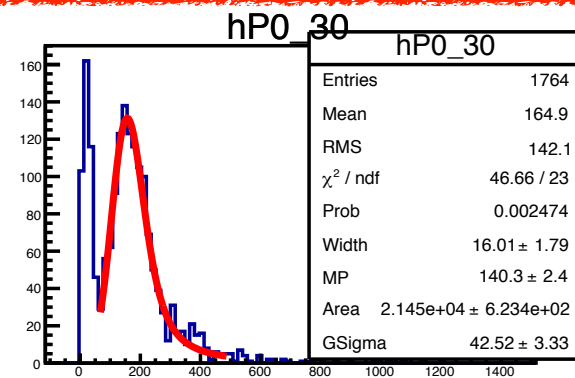
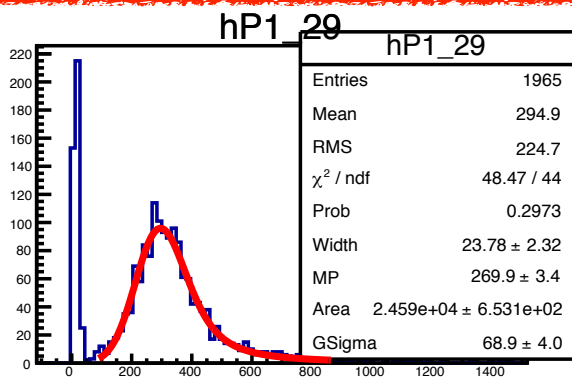
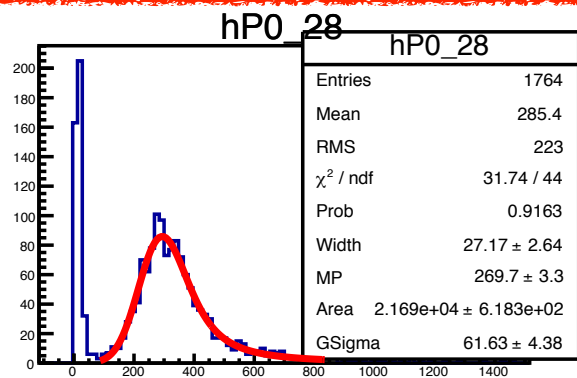
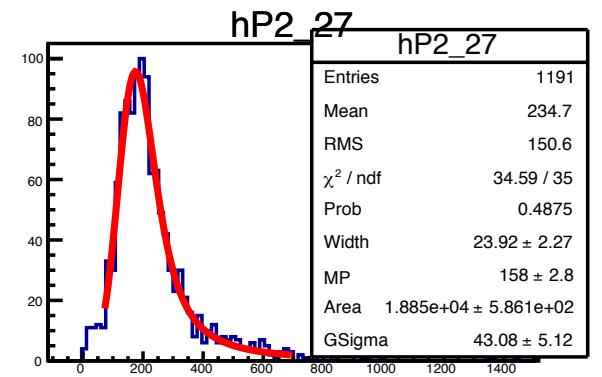
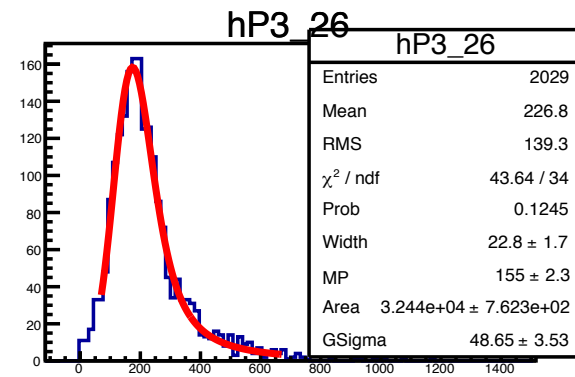
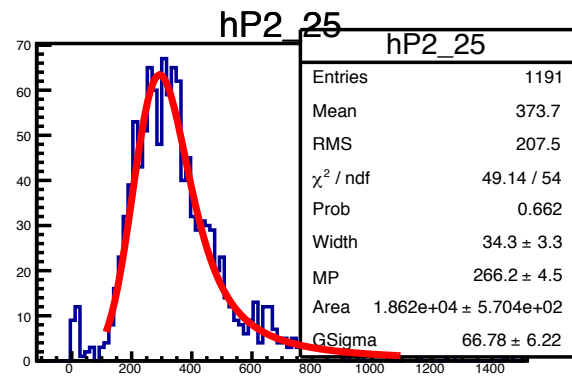
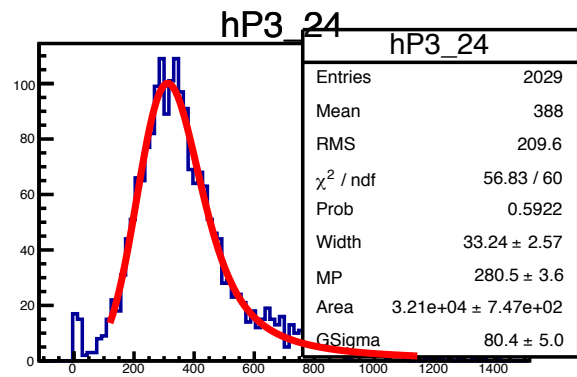
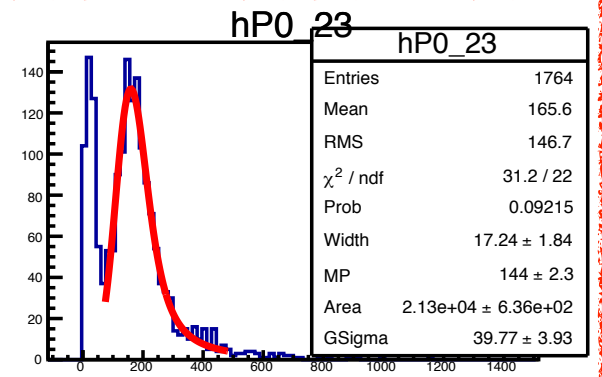
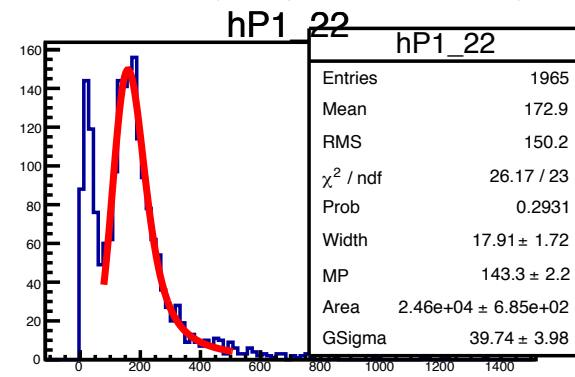
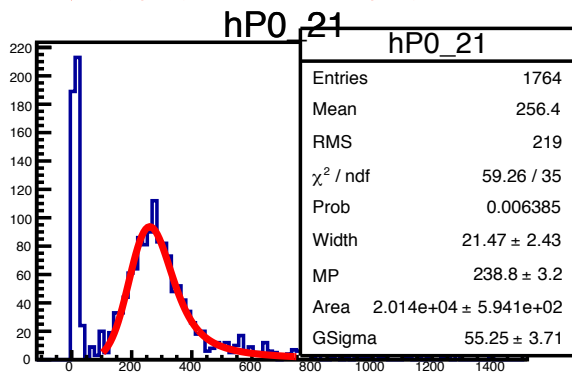
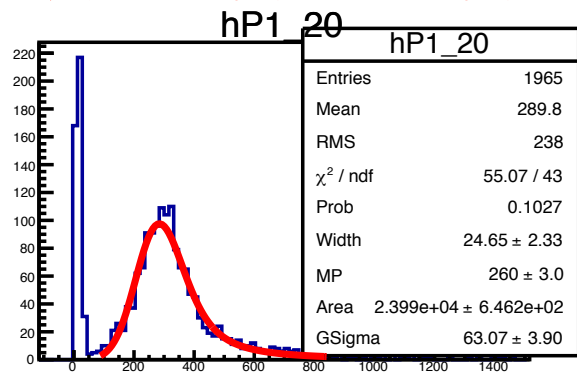
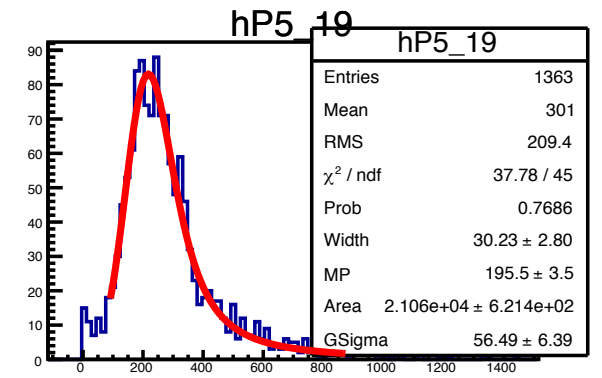
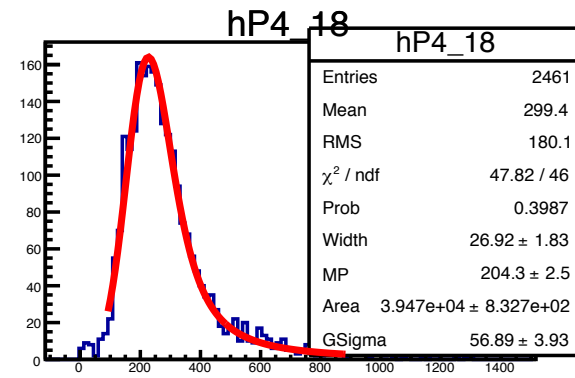
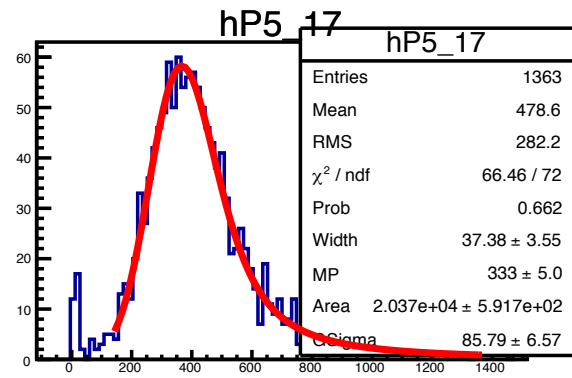
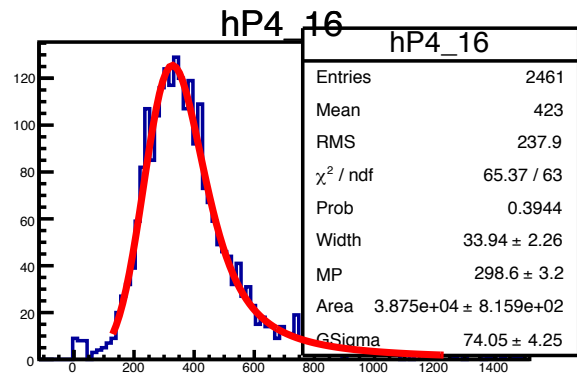
//Flag for Top & Bottom Cross
if( (hit_05[16]==1 || hit_05[17]==1 || hit_05[34]==1 || hit_05[35]==1 || hit_05[52]==1 || hit_05[53]==1)
    && (hit_05[14]==1 || hit_05[15]==1 || hit_05[32]==1 || hit_05[33]==1 || hit_05[50]==1 || hit_05[51]==1)
    && (hit_05[12]==1 || hit_05[13]==1 || hit_05[30]==1 || hit_05[31]==1 || hit_05[48]==1 || hit_05[49]==1)
    && (hit_05[4]==1 || hit_05[5]==1 || hit_05[22]==1 || hit_05[23]==1 || hit_05[40]==1 || hit_05[41]==1)
    && (hit_05[2]==1 || hit_05[3]==1 || hit_05[20]==1 || hit_05[21]==1 || hit_05[38]==1 || hit_05[39]==1)
    && (hit_05[0]==1 || hit_05[1]==1 || hit_05[18]==1 || hit_05[19]==1 || hit_05[36]==1 || hit_05[37]==1)
    && VetoFlag05[0]==0 && VetoFlag05[1] == 0) TrFlag05[6]=1;
```

# DCVPeak Distribution (DCV1, Flag 0, 1)



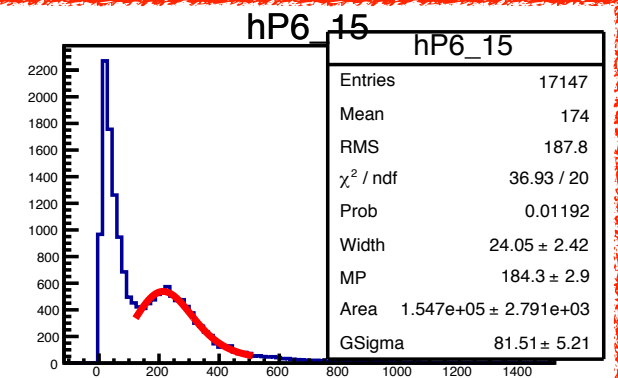
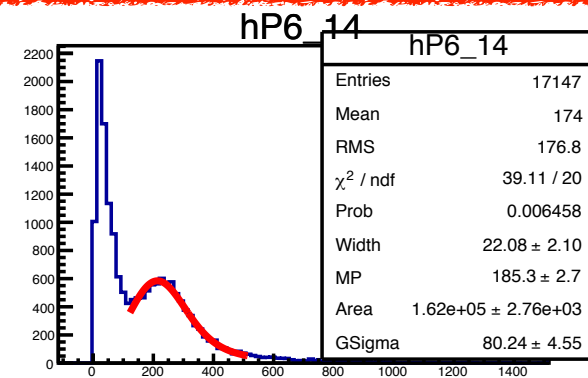
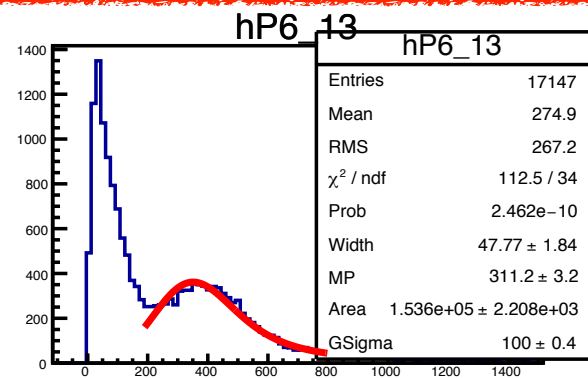
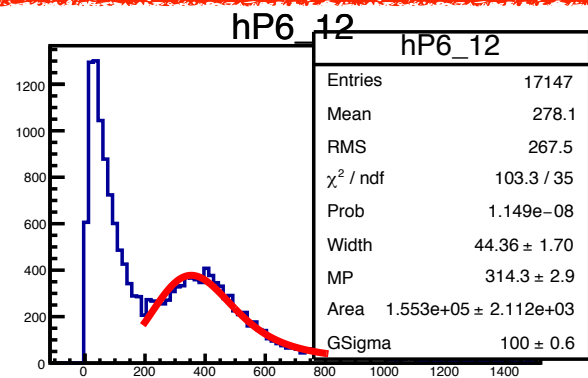
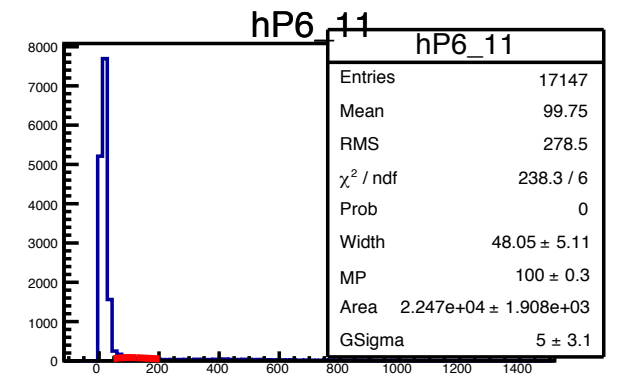
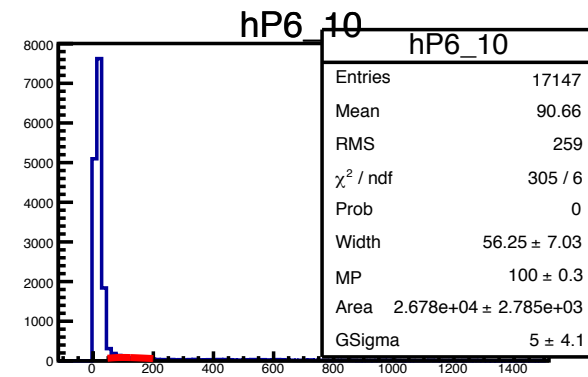
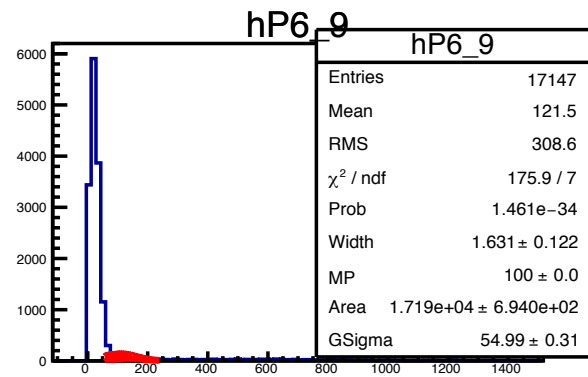
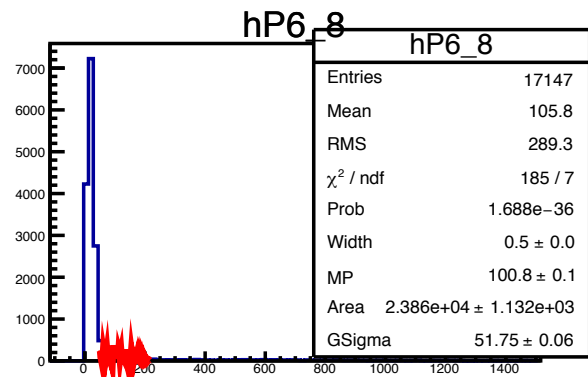
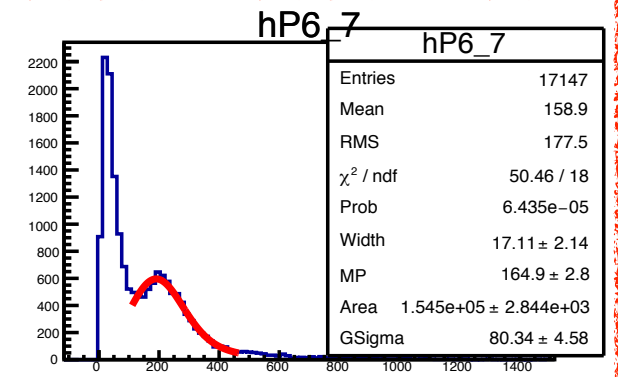
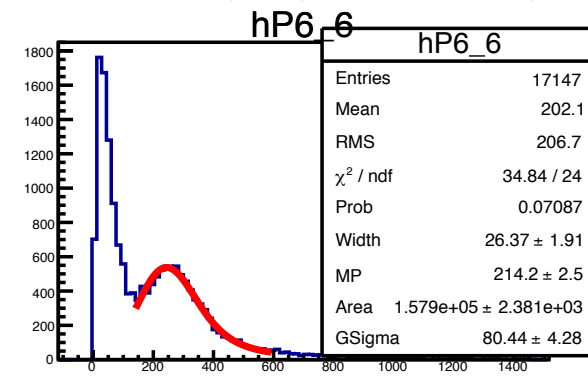
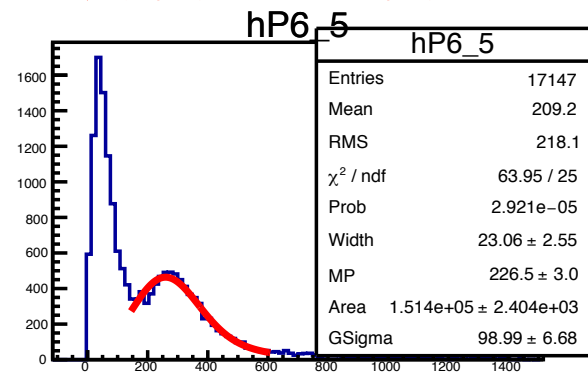
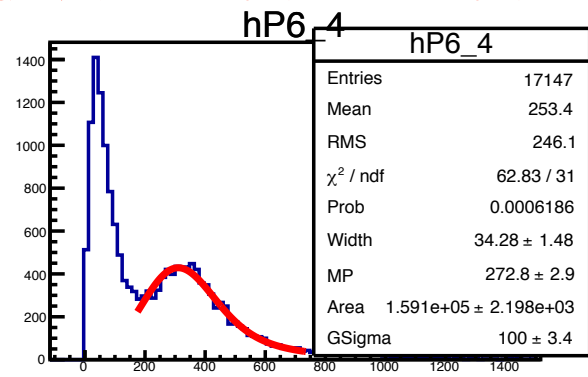
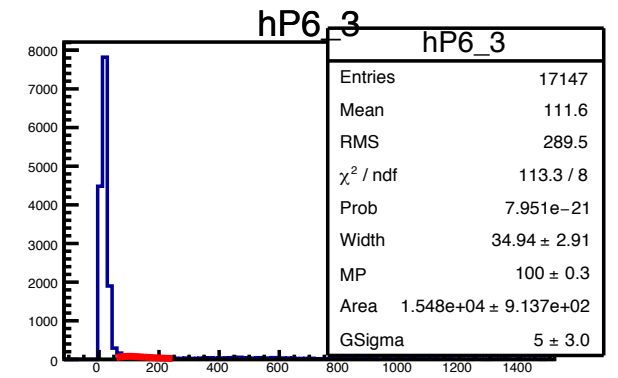
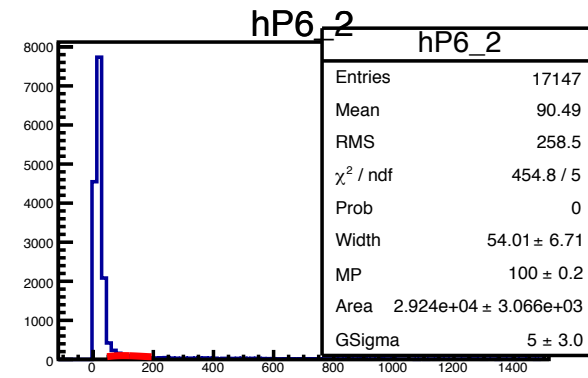
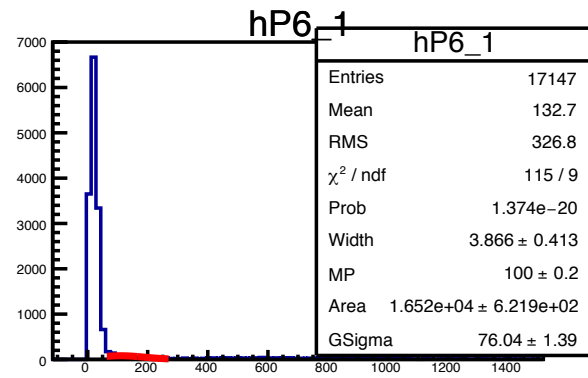
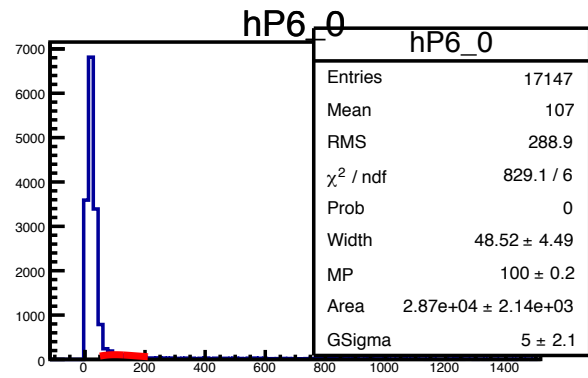


# DCVPeak Distribution (DCV2, Flag 0, 1)

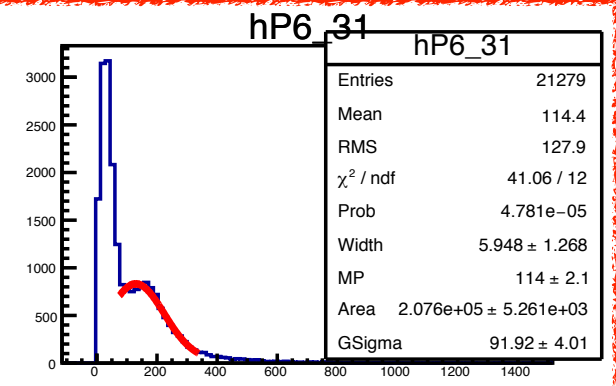
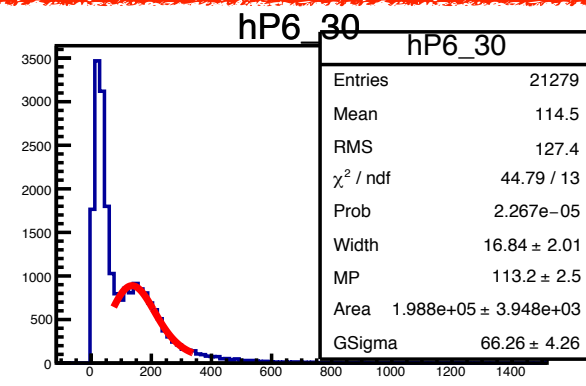
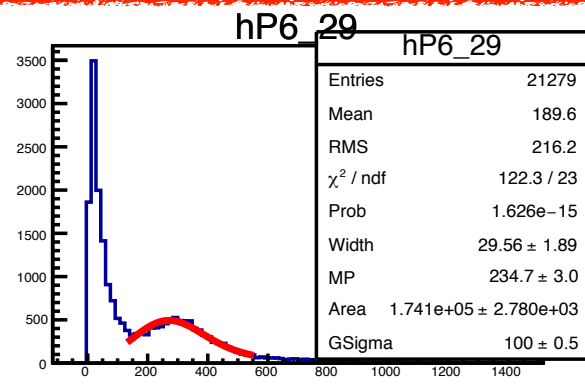
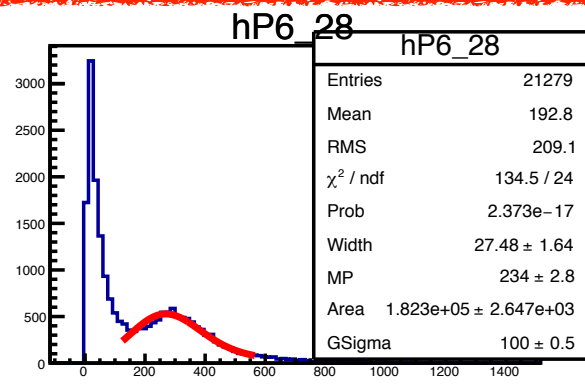
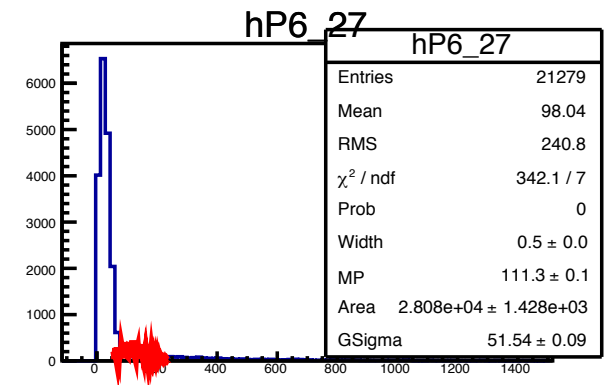
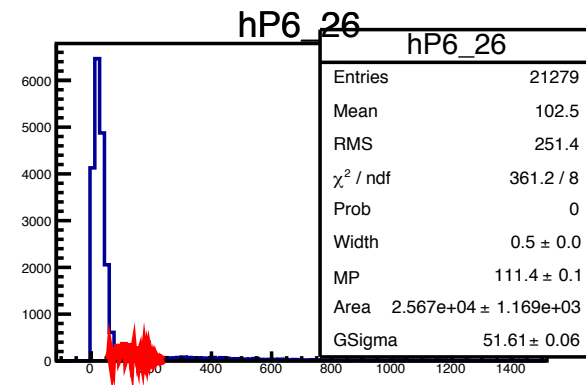
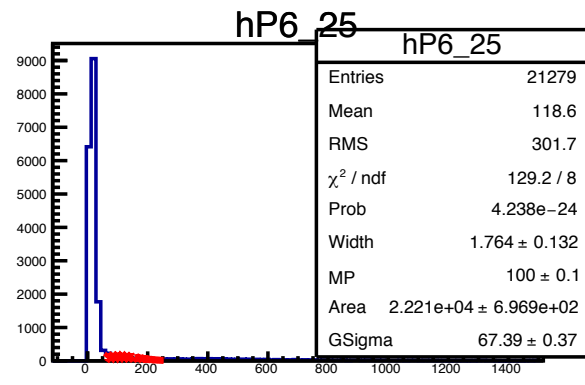
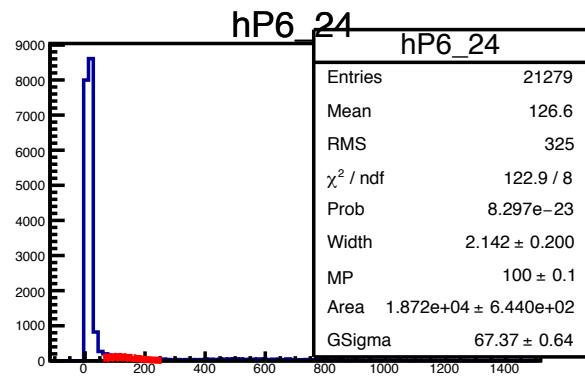
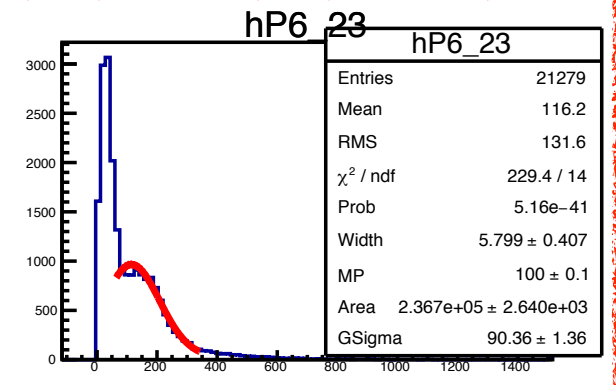
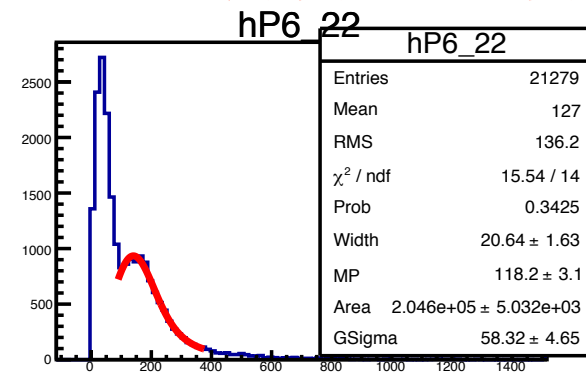
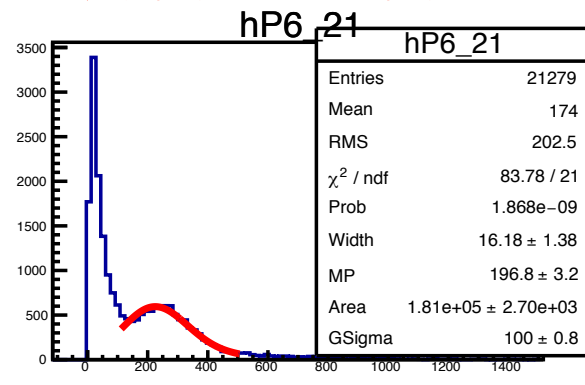
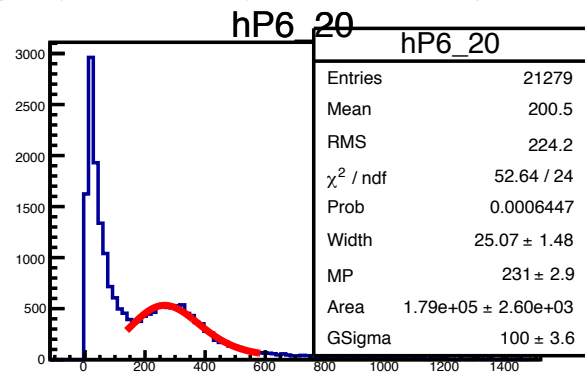
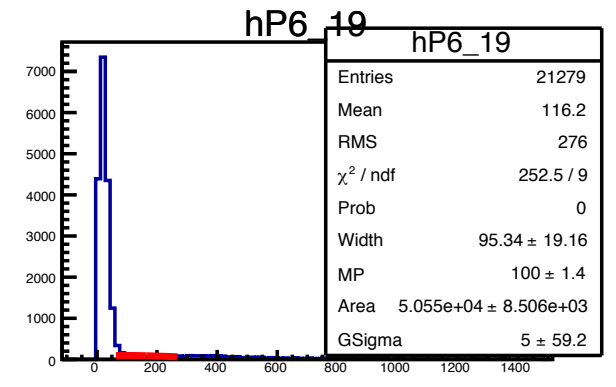
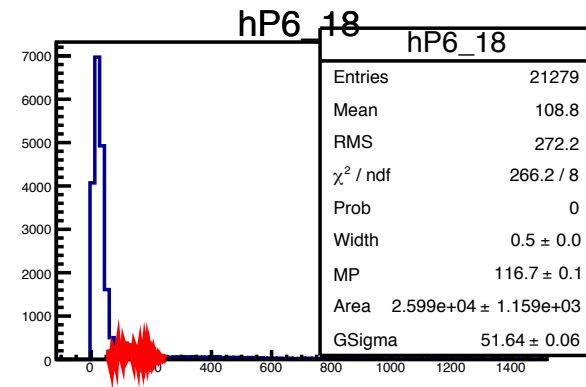
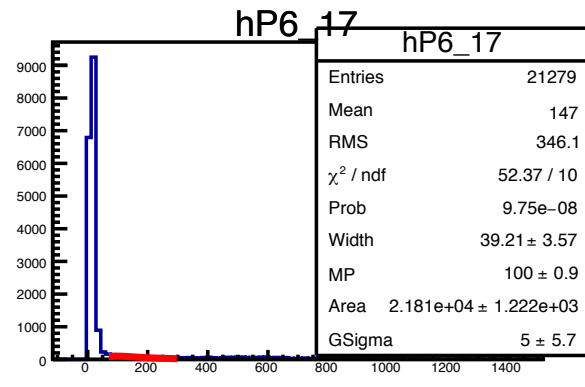
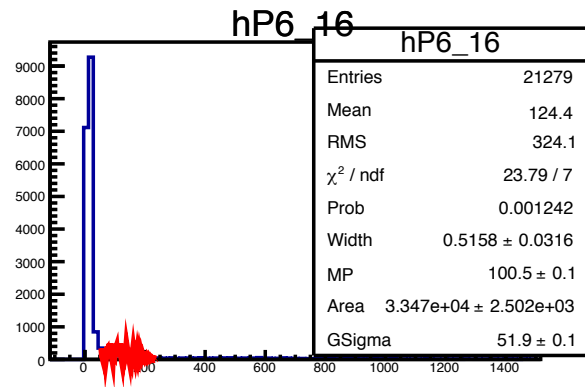




# DCVPeak Distribution(DCV1, Flag 6)



# DCVPeak Distribution(DCV2, Flag 6)



	North or South	Cross		North or South	Cross
Ch. 4	300.6	272.8	Ch. 20	260.0	231.0
Ch. 5	255.4	226.5	Ch. 21	238.8	196.8
Ch. 6	235.7	214.2	Ch. 22	143.3	118.2
Ch. 7	189.7	164.9	Ch. 23	144.0	100.0
Ch. 12	348.2	314.3	Ch. 28	269.7	234.0
Ch. 13	360.5	311.2	Ch. 29	269.9	234.7
Ch. 14	205.9	185.3	Ch. 30	140.3	113.2
Ch. 15	211.8	184.3	Ch. 31	146.7	114.0

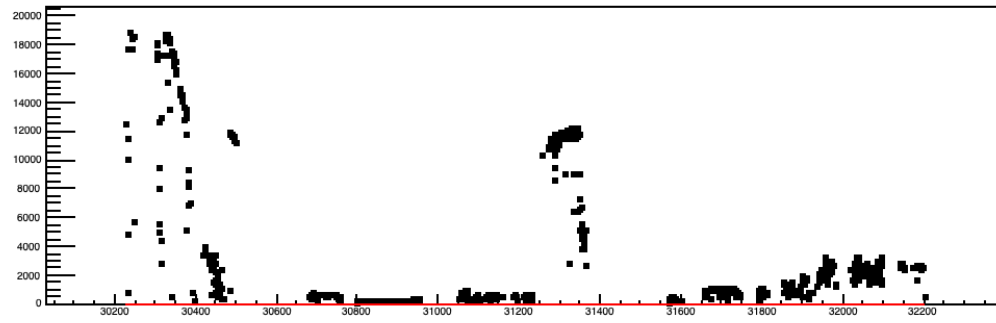
# Chi Square by DCV Module

cchi2\_1

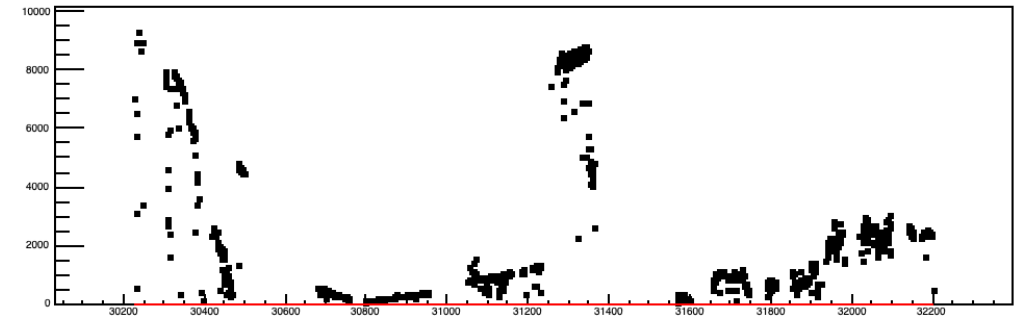
File Edit View Options Tools

Help

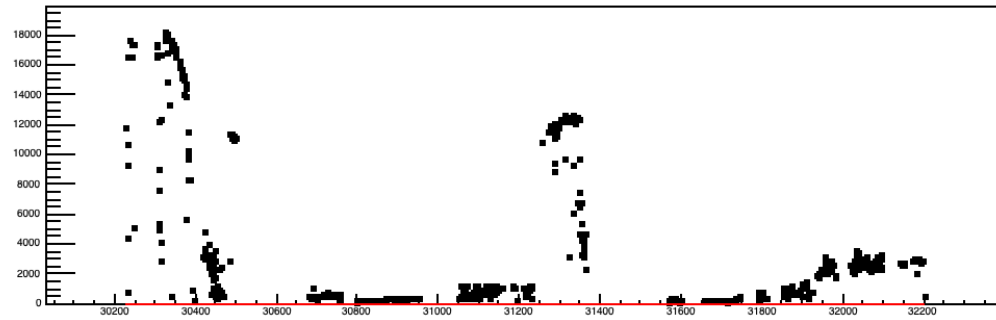
Mod.0



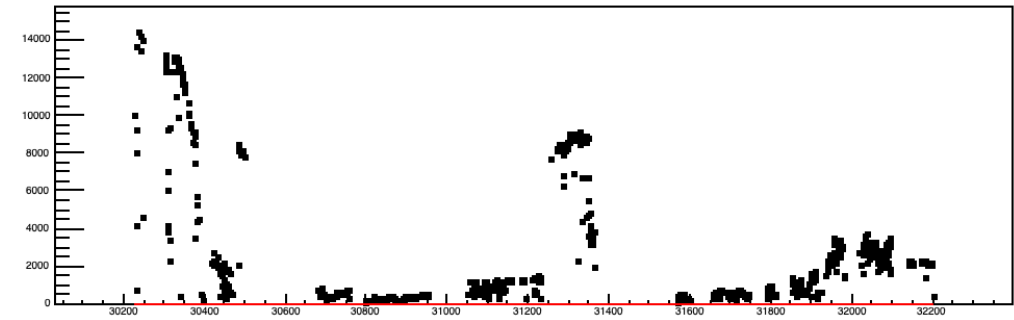
Mod.1



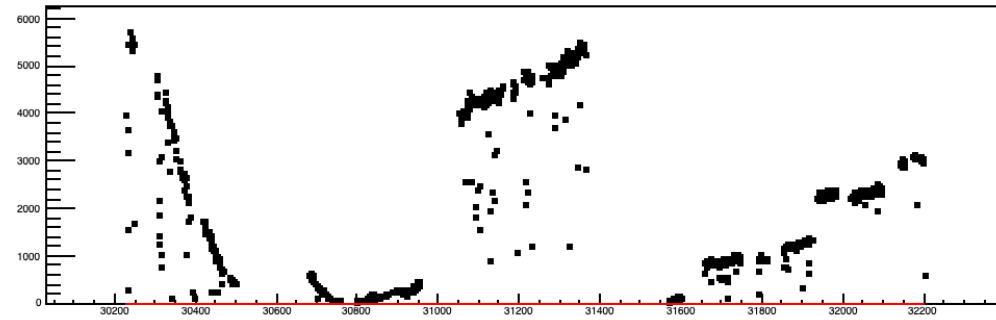
Mod.2



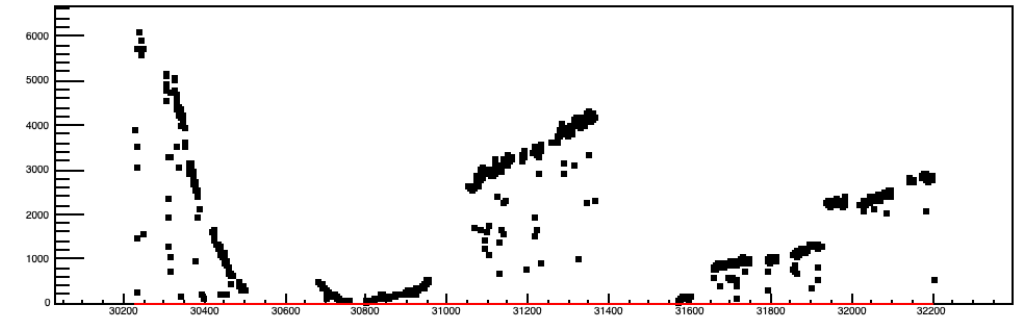
Mod.3



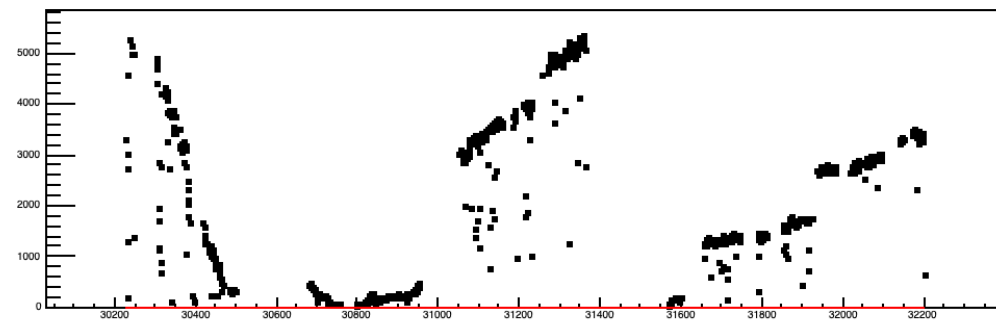
Mod.4



Mod.5



Mod.6



Mod.7

