

Physics Energy distribution(3)

2019 Summer Work

Run30799 ~ Run31363(Run 81)

Ref. Run = Run30798

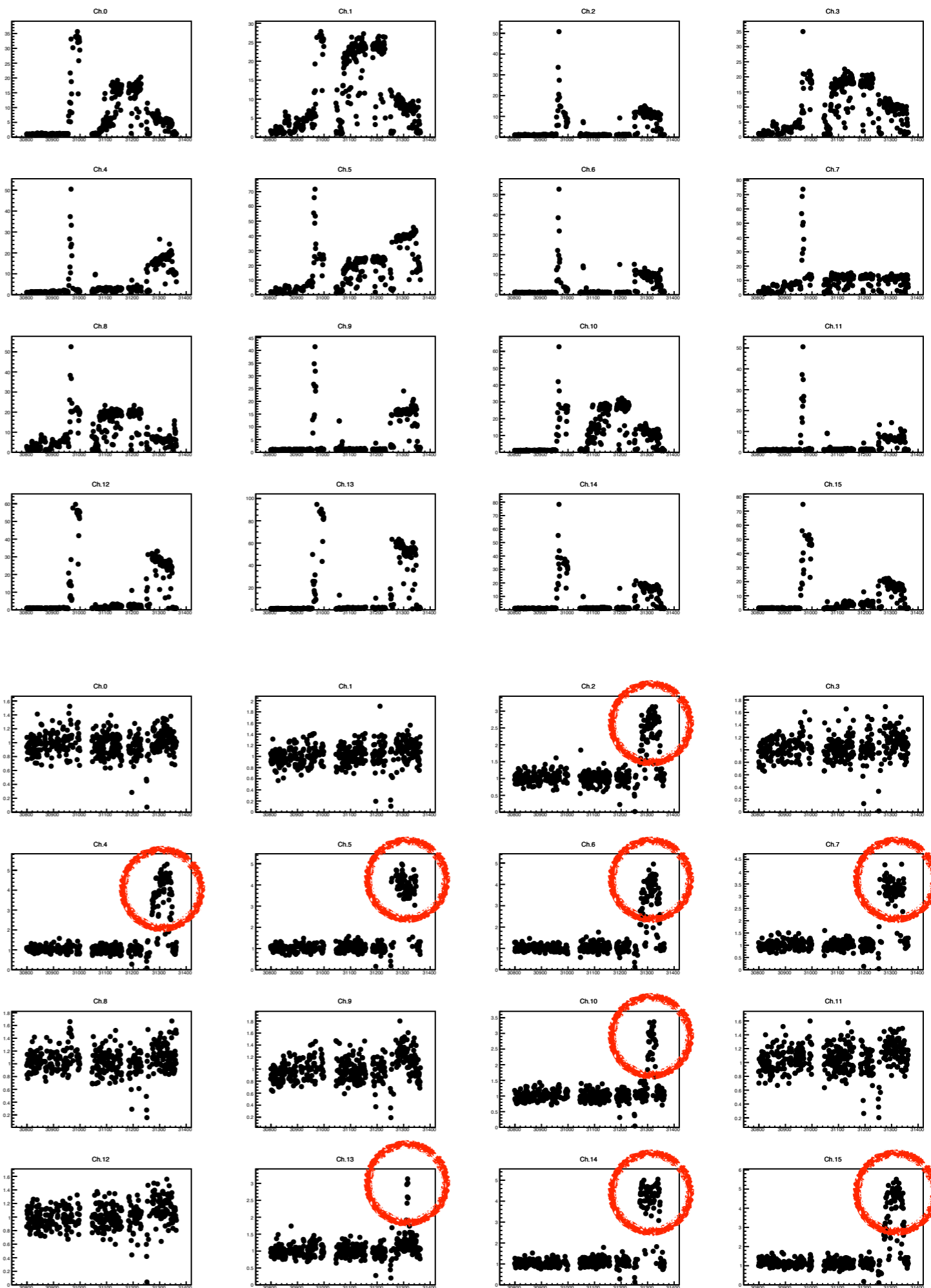
Chi Square

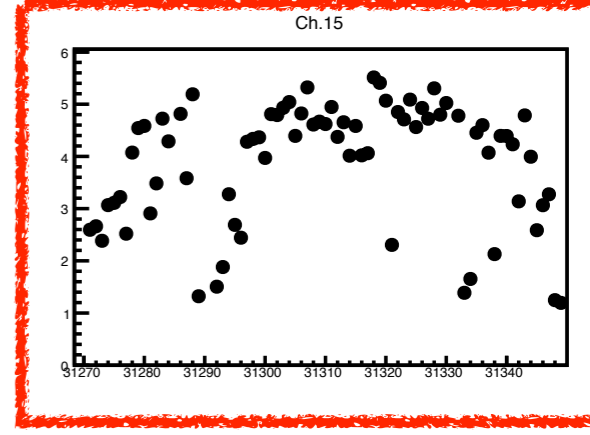
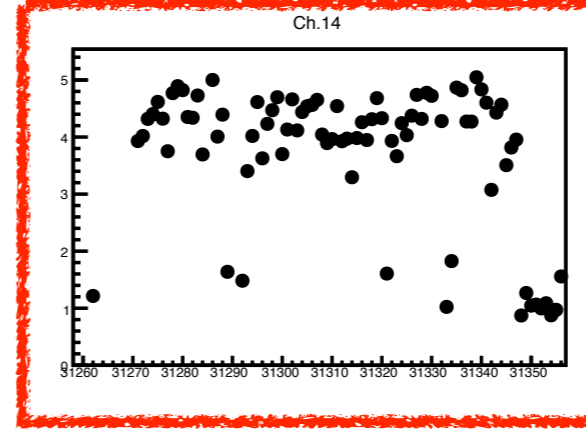
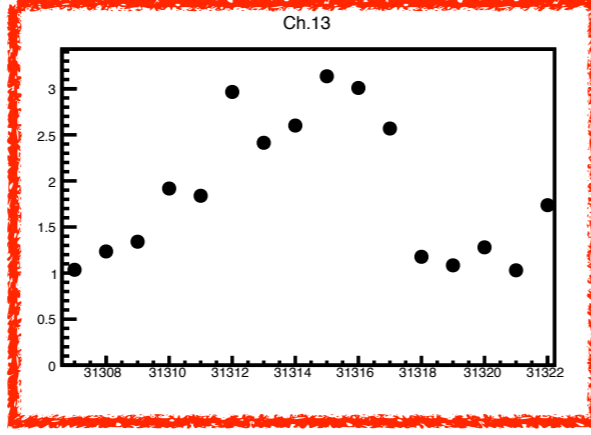
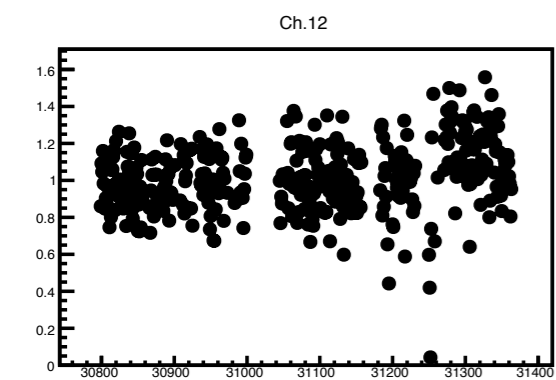
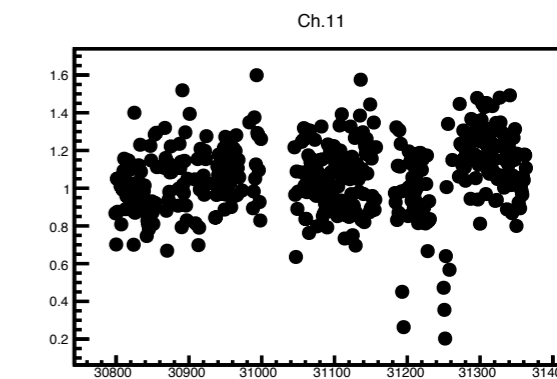
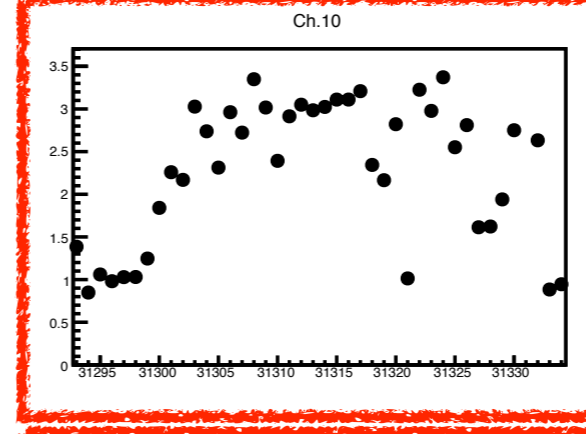
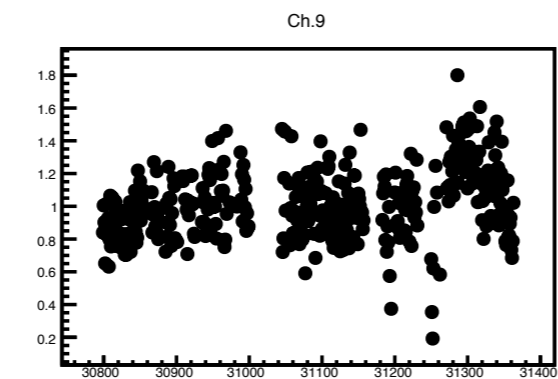
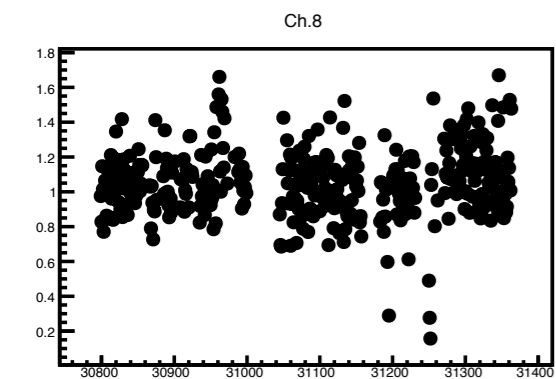
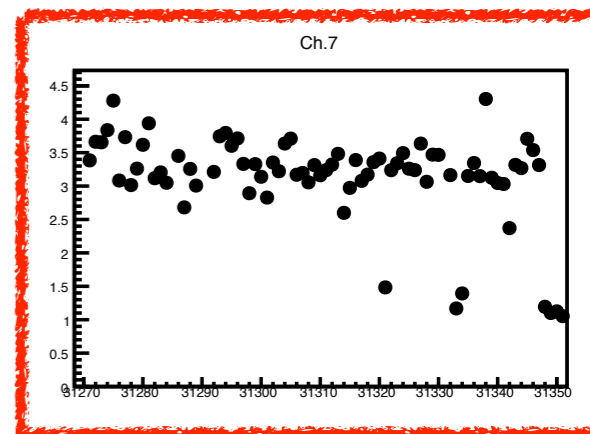
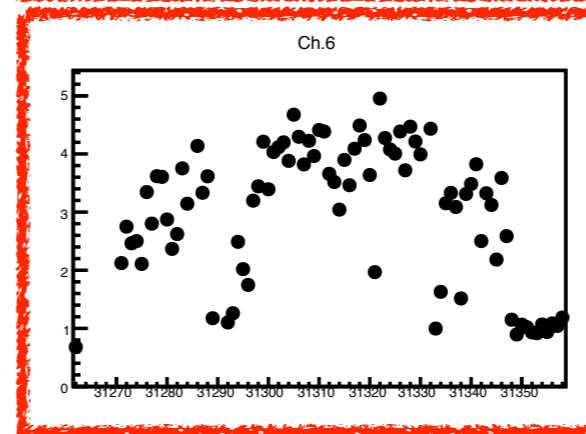
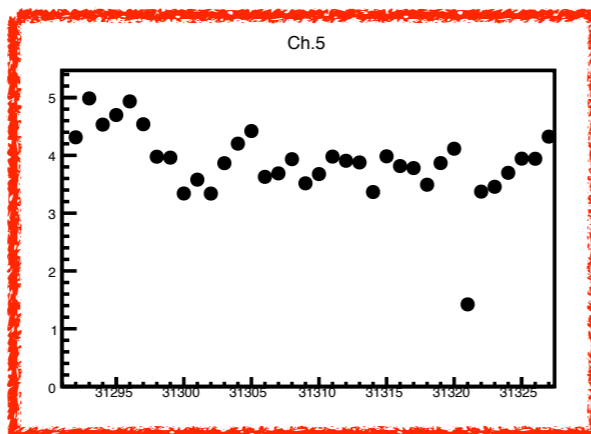
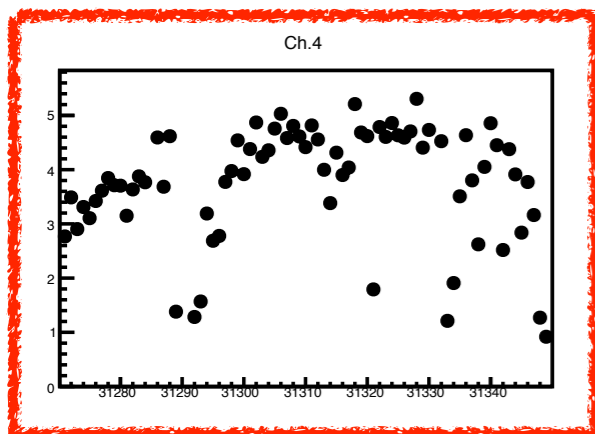
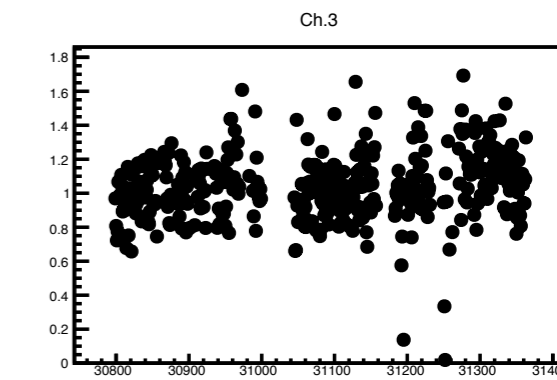
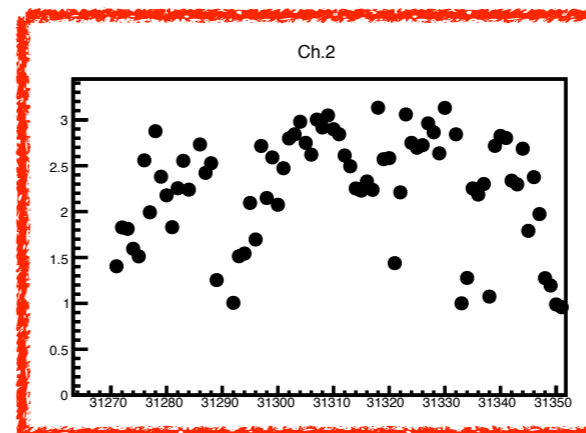
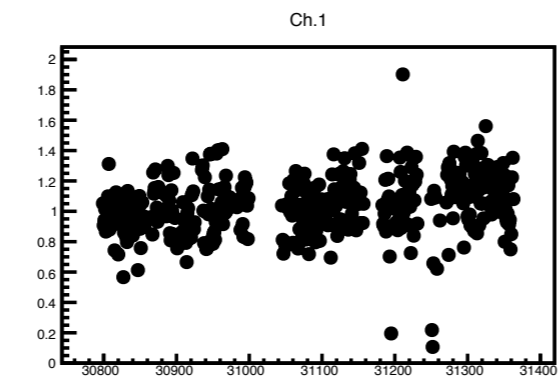
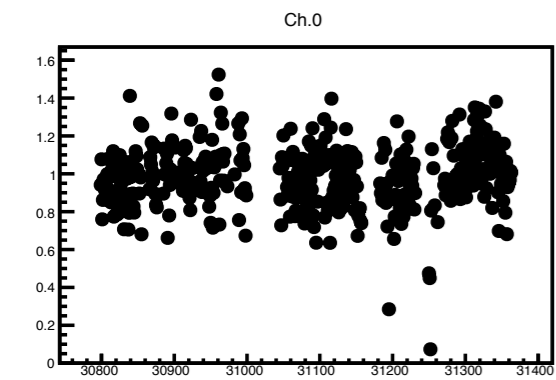
Each period calibration factor

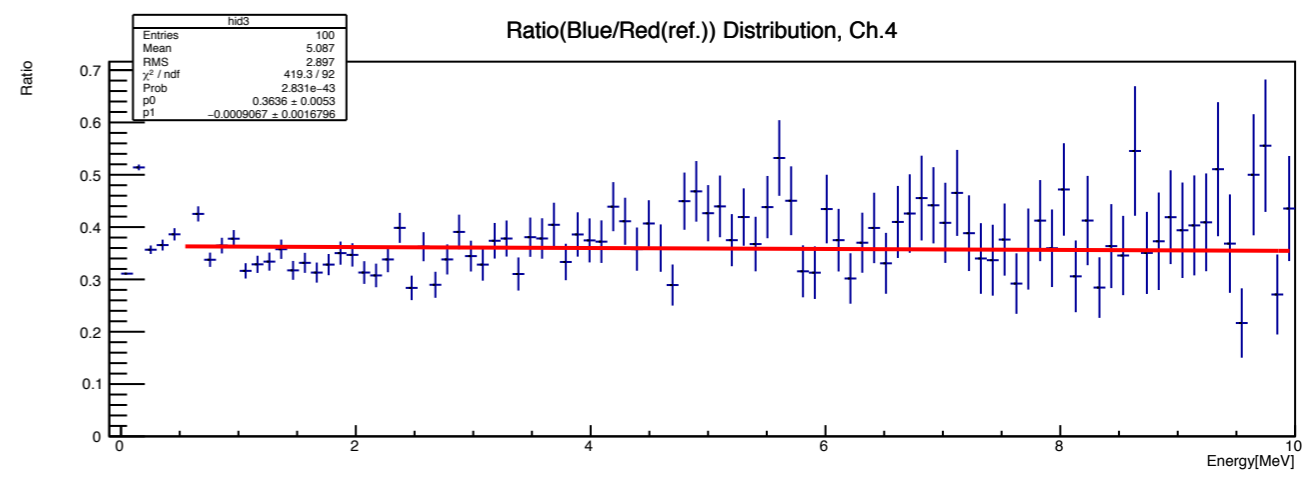
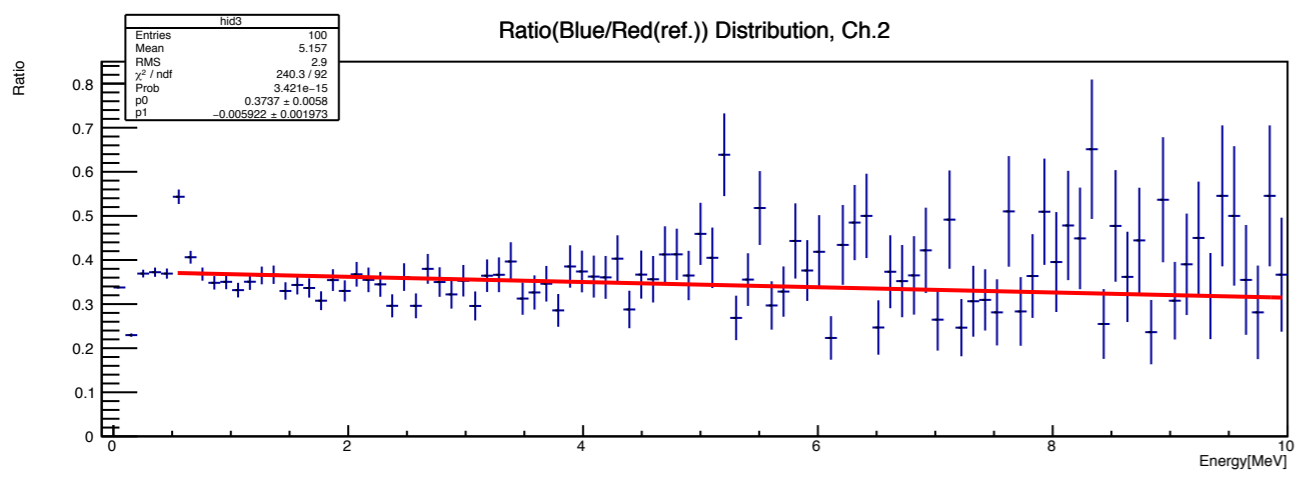
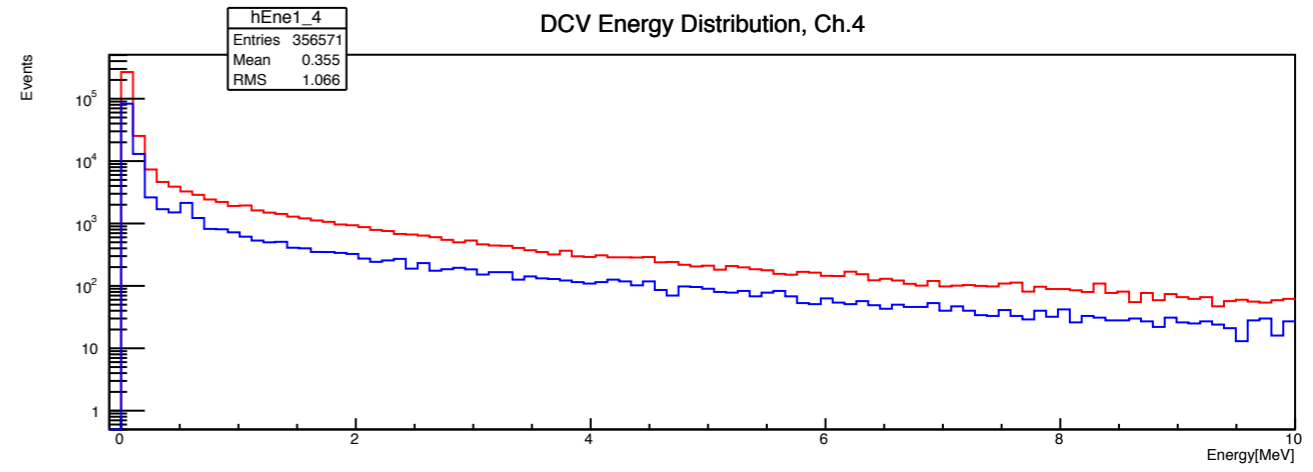
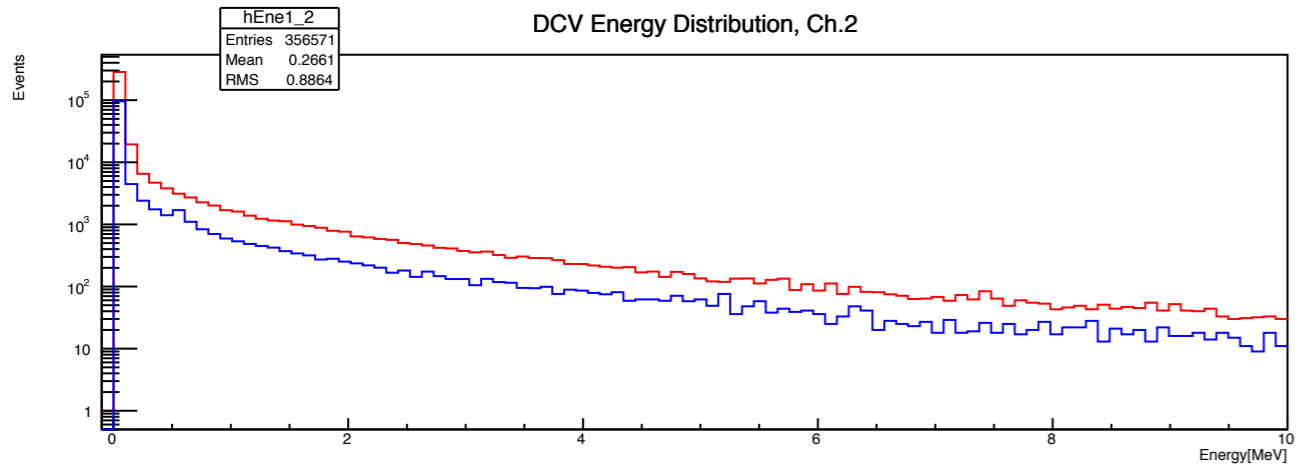
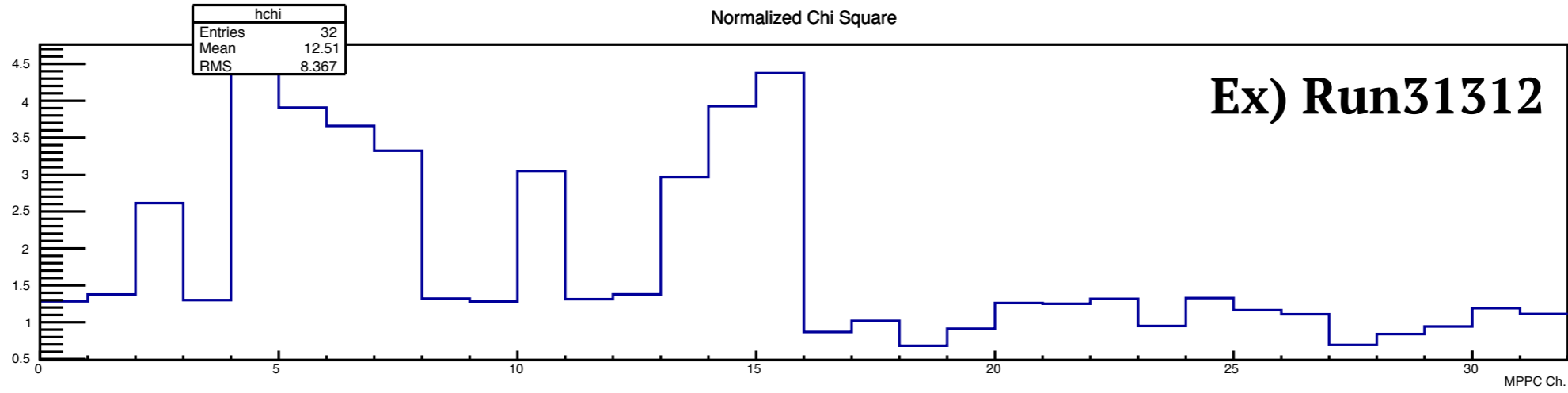
Fit Range : Full

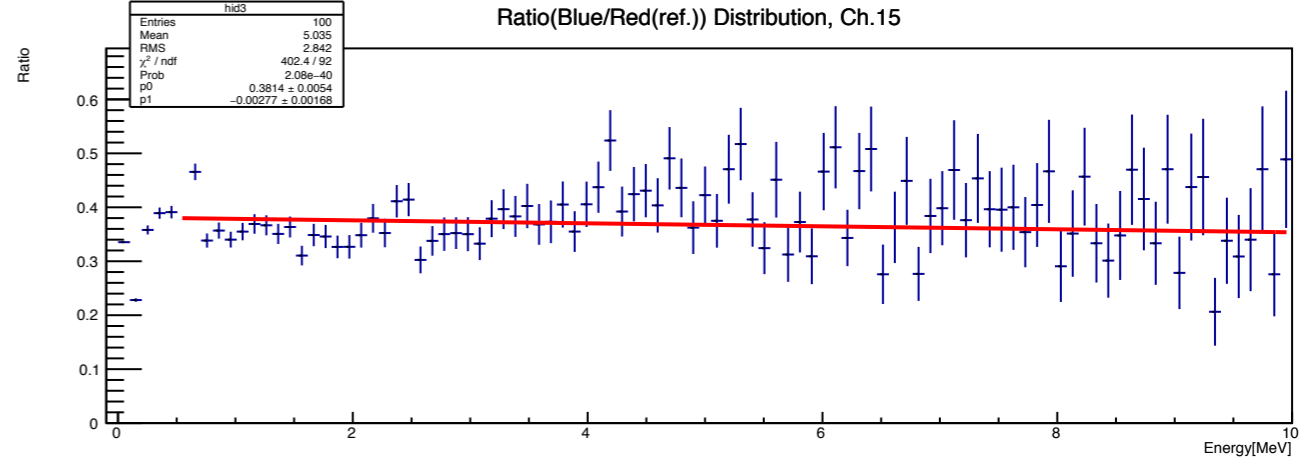
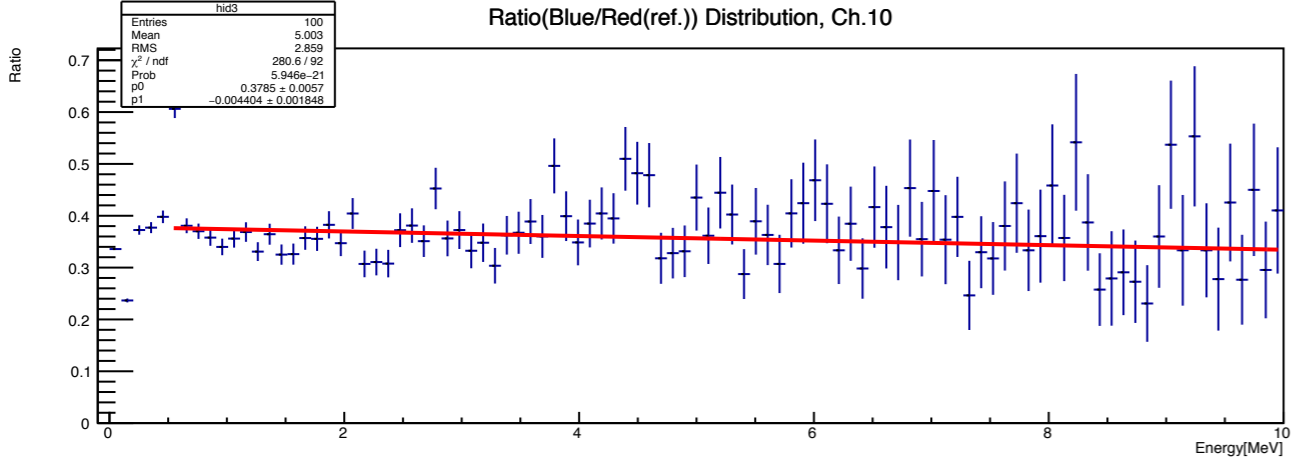
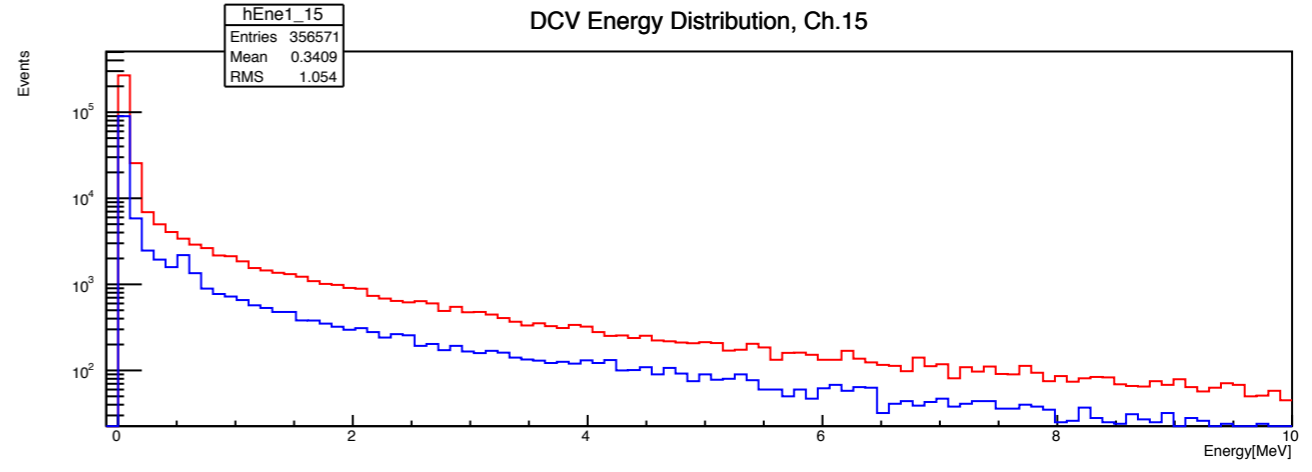
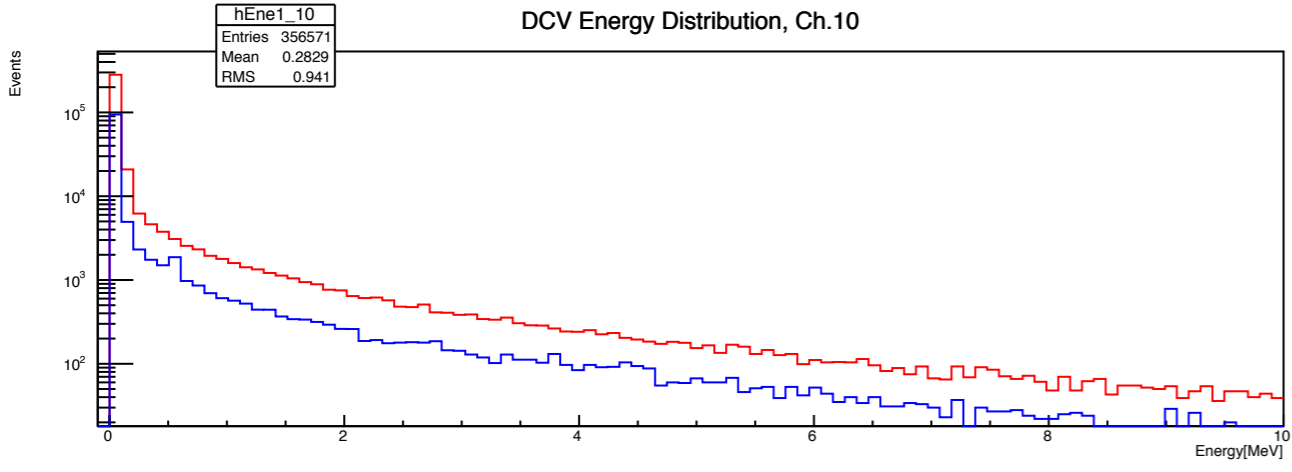
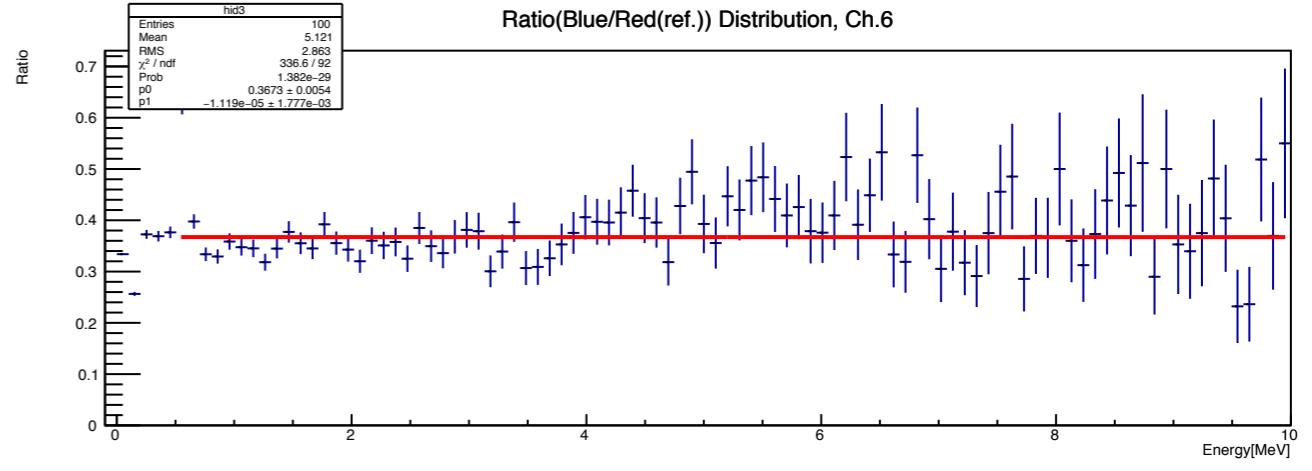
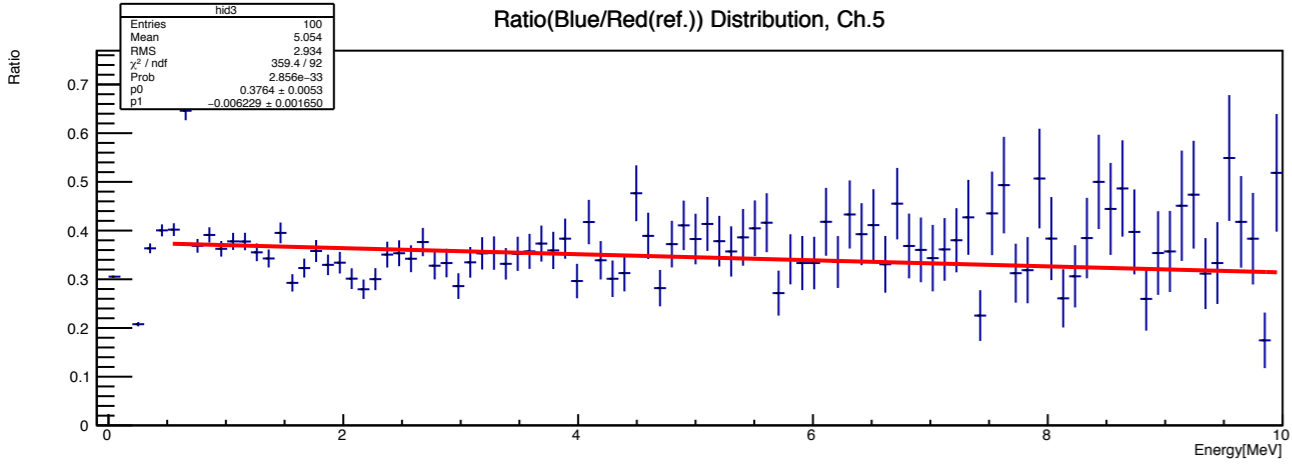
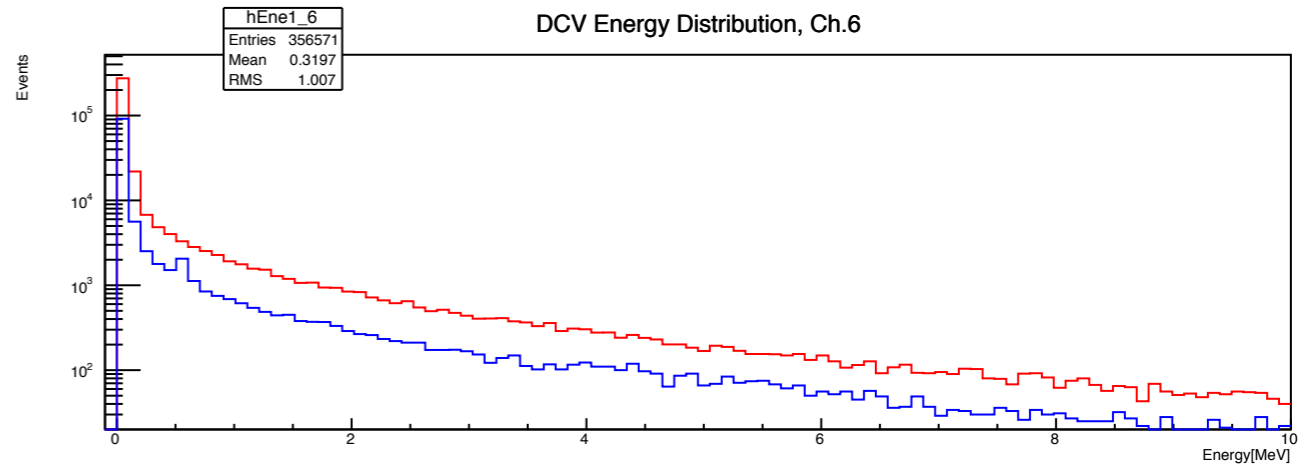
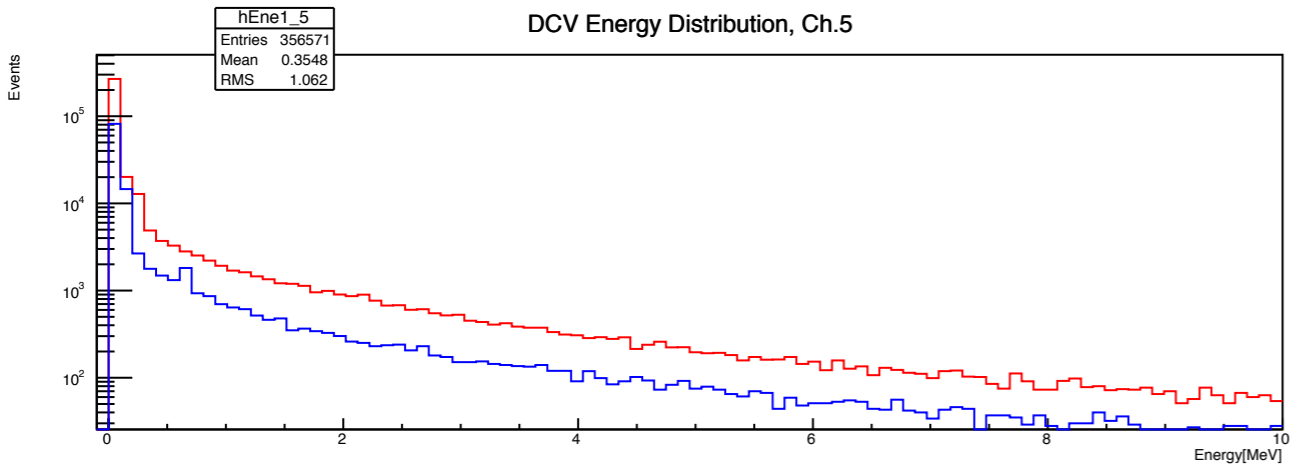
DCV1

Fit Range : 0.5 ~ 10









Run30799 ~ Run31363(Run 81)

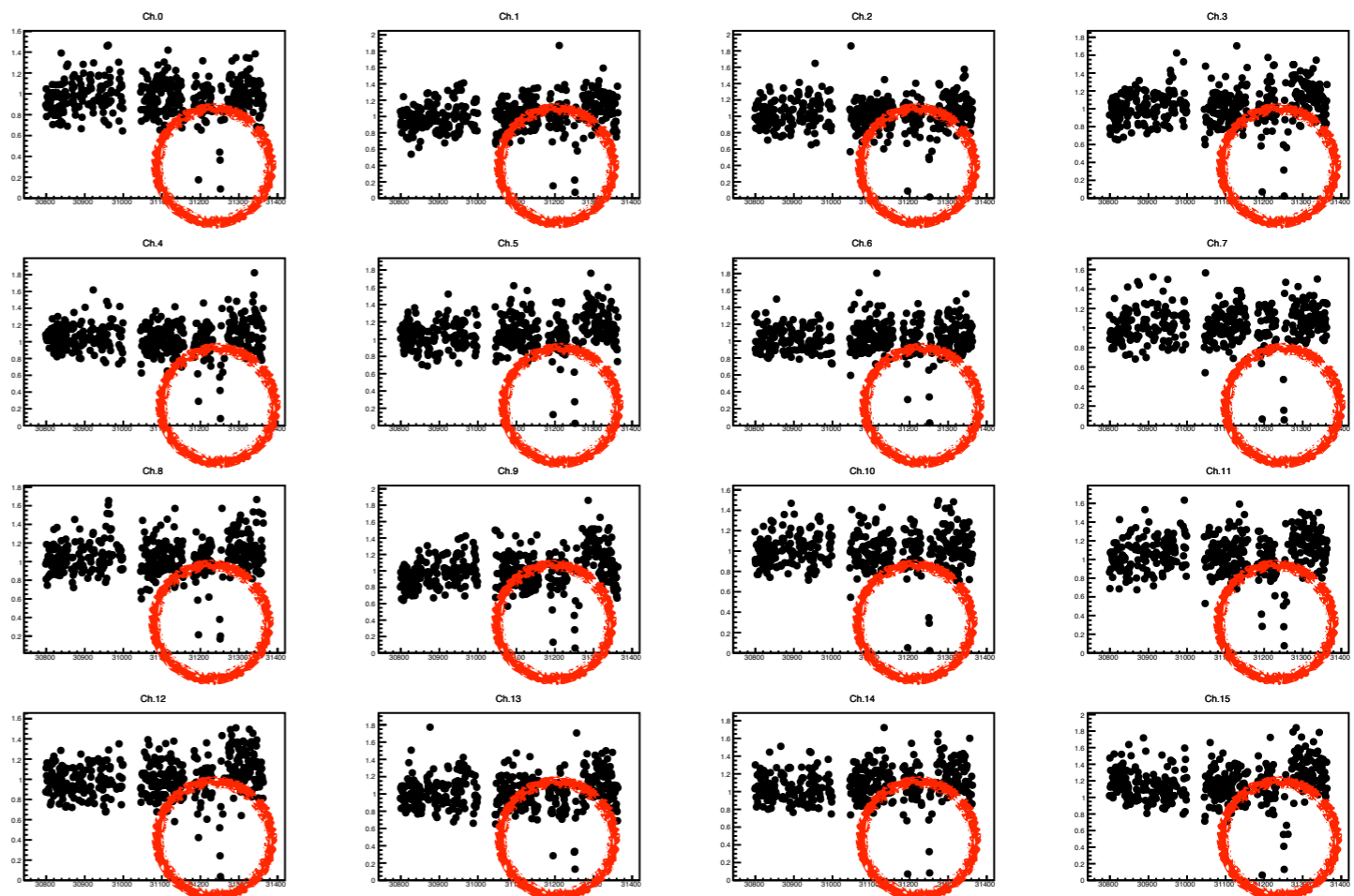
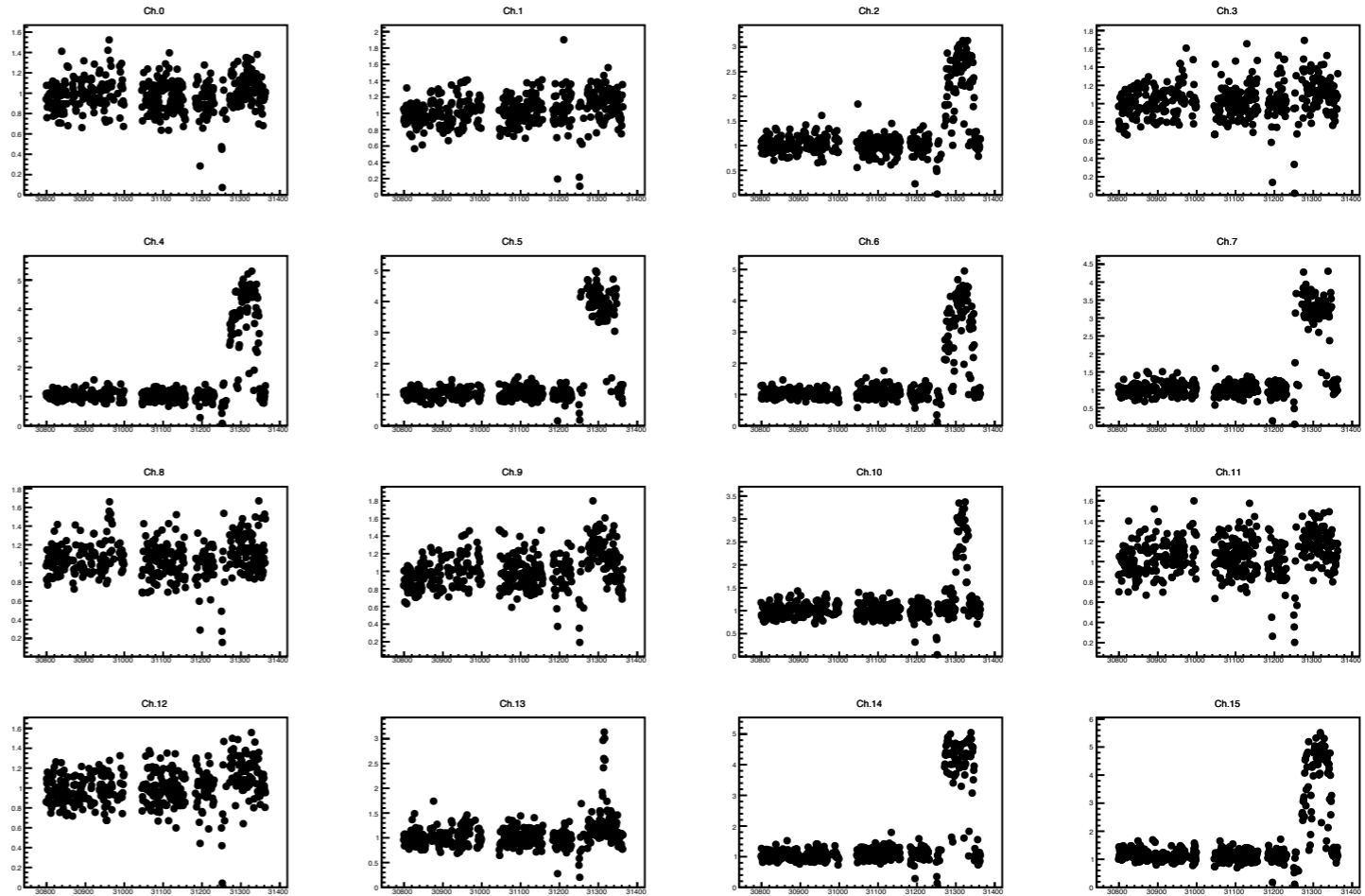
Ref. Run = Run30798

Chi Square

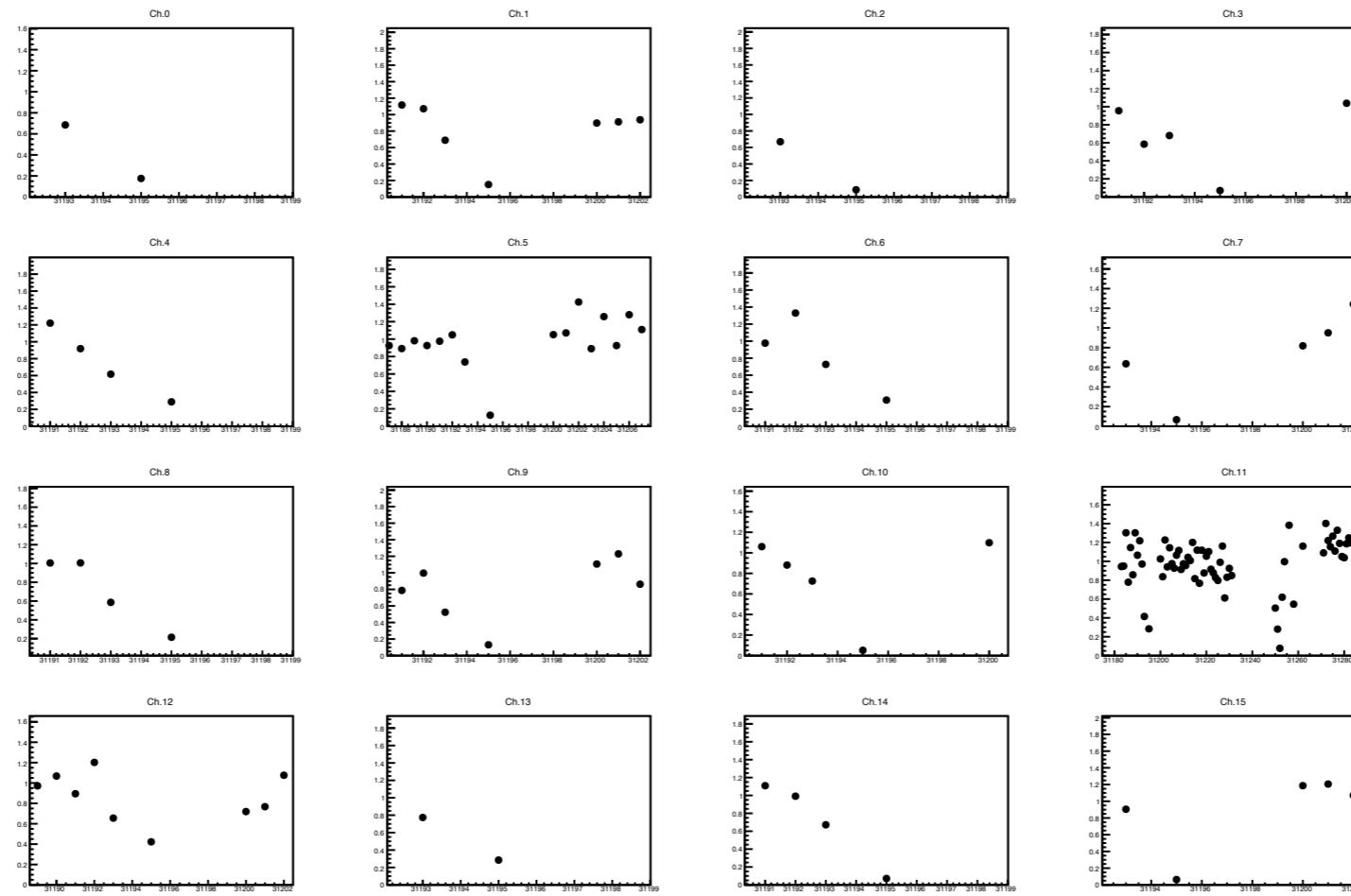
Each period calibration factor

Fit Range : 0.5 ~ 10

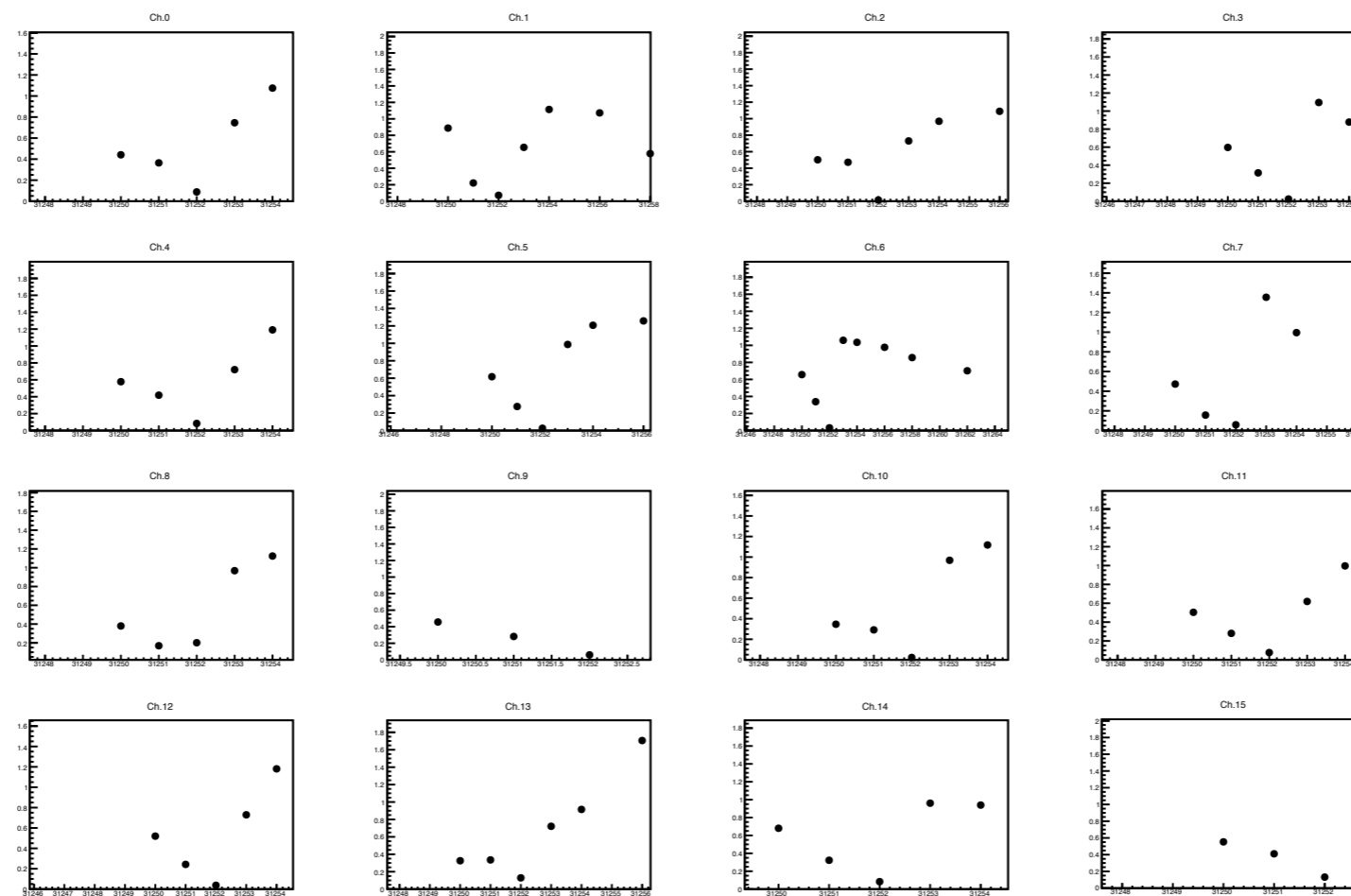
DCV1



Fit Range : 0.8 ~ 10



Run31195



Run31250
Run31251
Run31252

run number	Start time	Stop time	Run Type	Note	L1 Raw	L1 Live	L1 Accepted	L1 Accept rate	L2 Accepted	SemiOnline Plots
31195	2019-03-13 09:53:01	2019-03-13 09:55:45	Physics	Physics_PedSupOnCSIandVeto_4_6_cluster_PrescaleMini900_CC03_10MeV_MB_10MeV_IB_8MeV	0	0	0	0.00	35993	link
Total				0	0	0		35993		

run number	Start time	Stop time	Run Type	Note	L1 Raw	L1 Live	L1 Accepted	L1 Accept rate	L2 Accepted	SemiOnline Plots
31250	2019-03-14 23:30:54	2019-03-14 23:38:19	Physics	D1magnet_test	0	0	0	0.00	154414	link
31251	2019-03-14 23:40:25	2019-03-14 23:42:50	Physics	D1magnet_test	0	0	0	0.00	46476	link
31252	2019-03-14 23:47:04	2019-03-14 23:48:16	Physics	Physics_PedSupOnCSIandVeto_4_6_cluster_PrescaleMini900_CC03_10MeV_MB_10MeV_IB_8MeV	0	0	0	0.00	15087	link
Total				0	0	0		215977		

Run30799 ~ Run31363(Run 81)

Ref. Run = Run30798

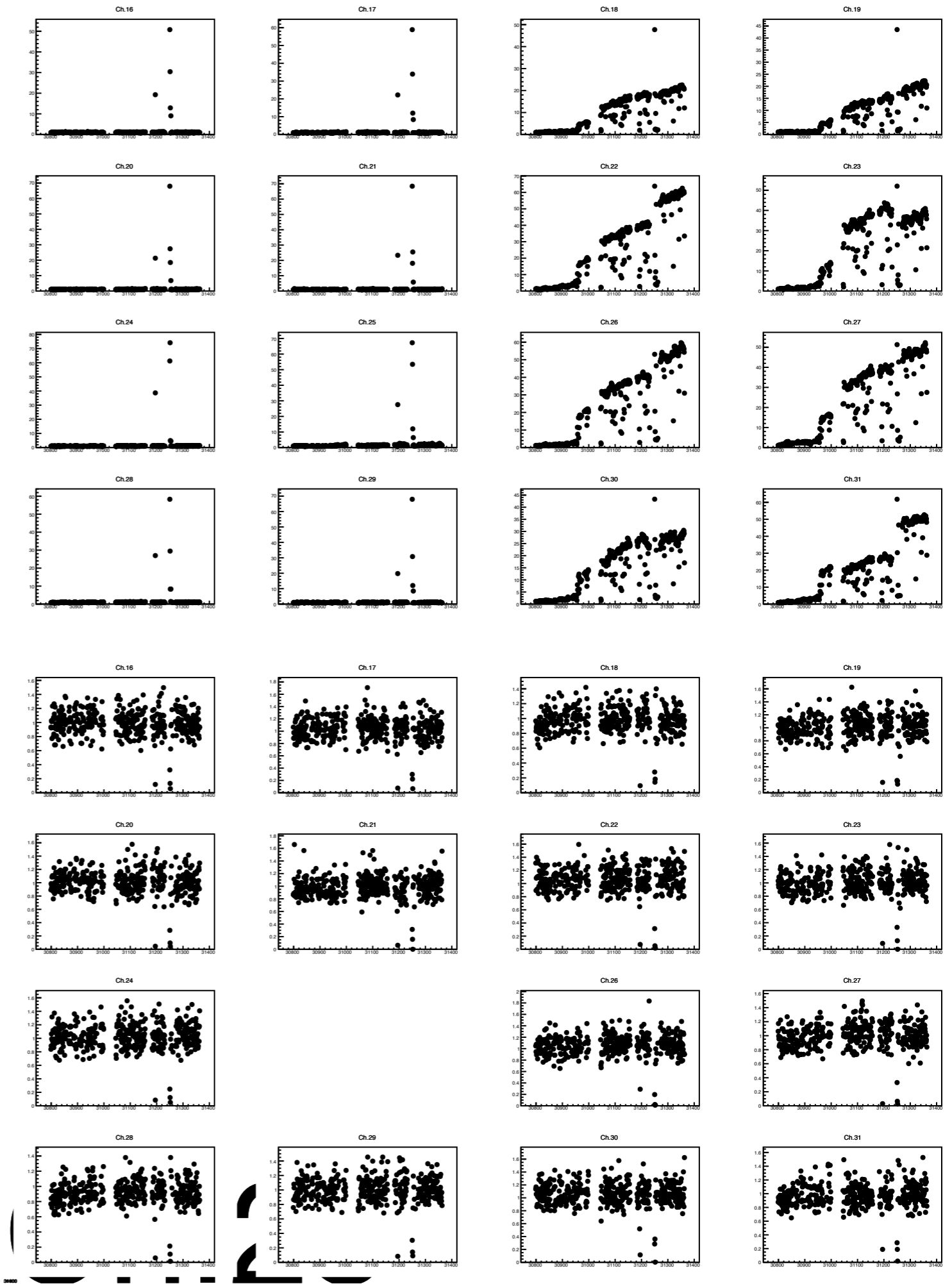
Chi Square

Each period calibration factor

Fit Range : Full

DCV2

Fit Range : 0.5 ~ 10



For Run82

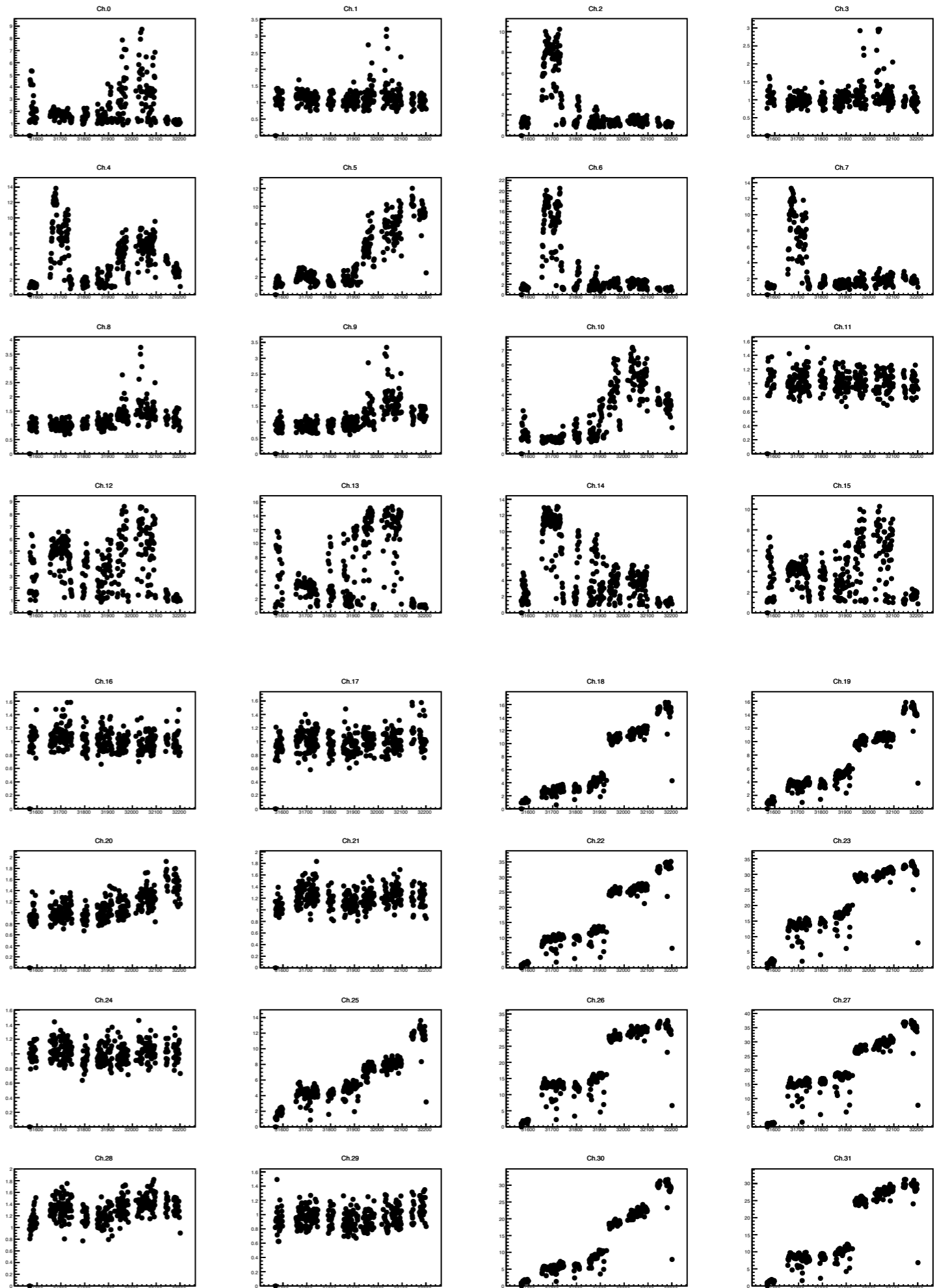
Run31568 ~ Run32201(Run 82)

Ref. Run = Run31569

Chi Square

Each period calibration factor

Fit Range : Full



Run31568 ~ Run32201(Run 82)

Ref. Run = Run31569

Chi Square

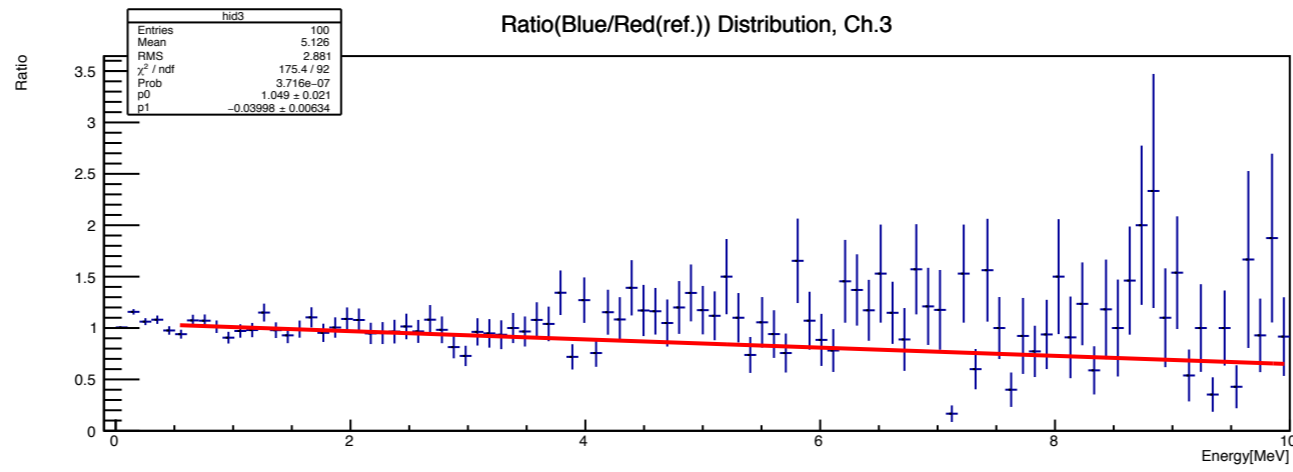
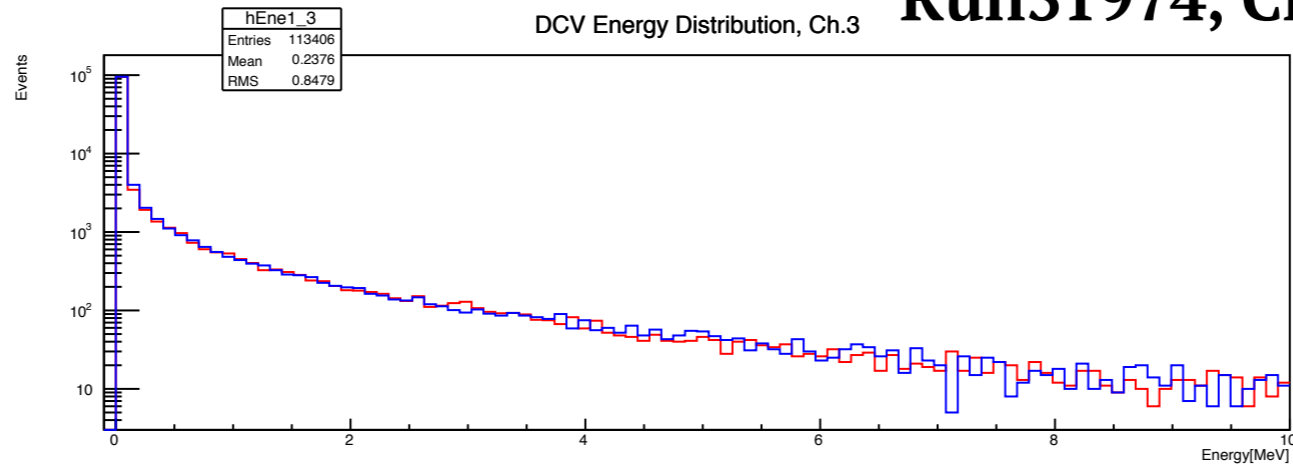
Each period calibration factor

Fit Range : 0.5 ~ 10

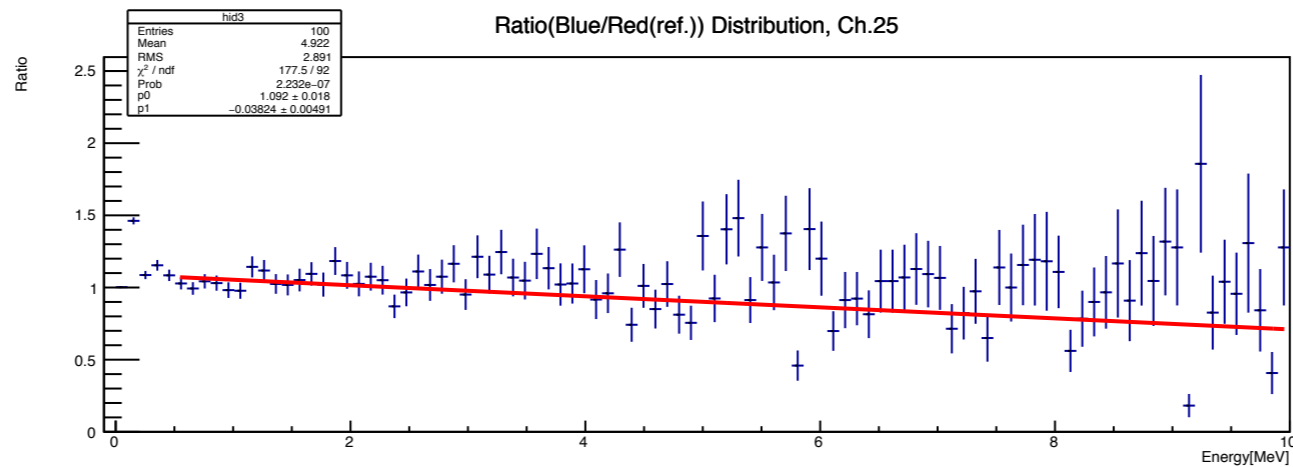
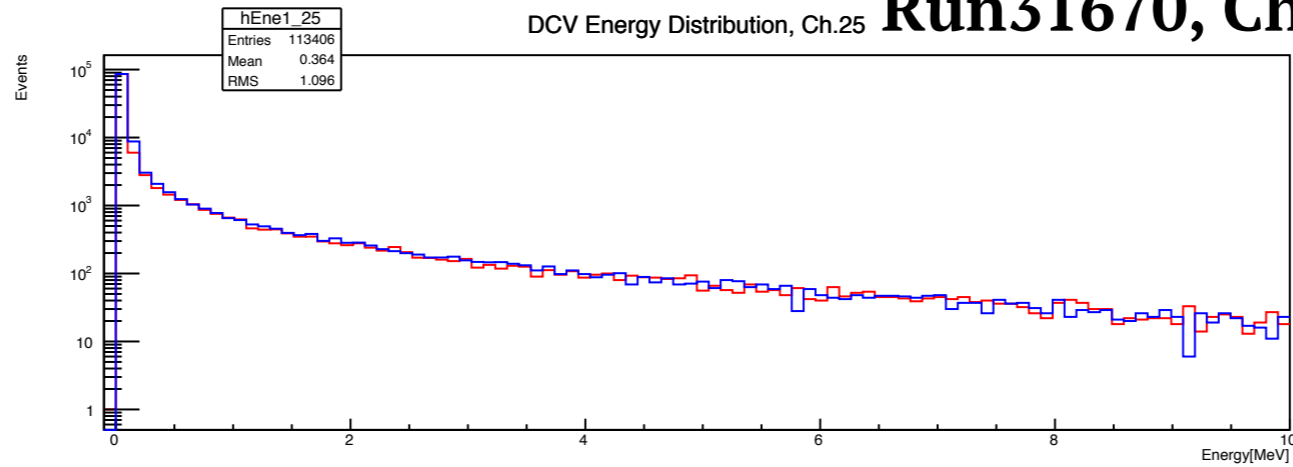
Run31569



Run31974, Ch3



Run31670, Ch25



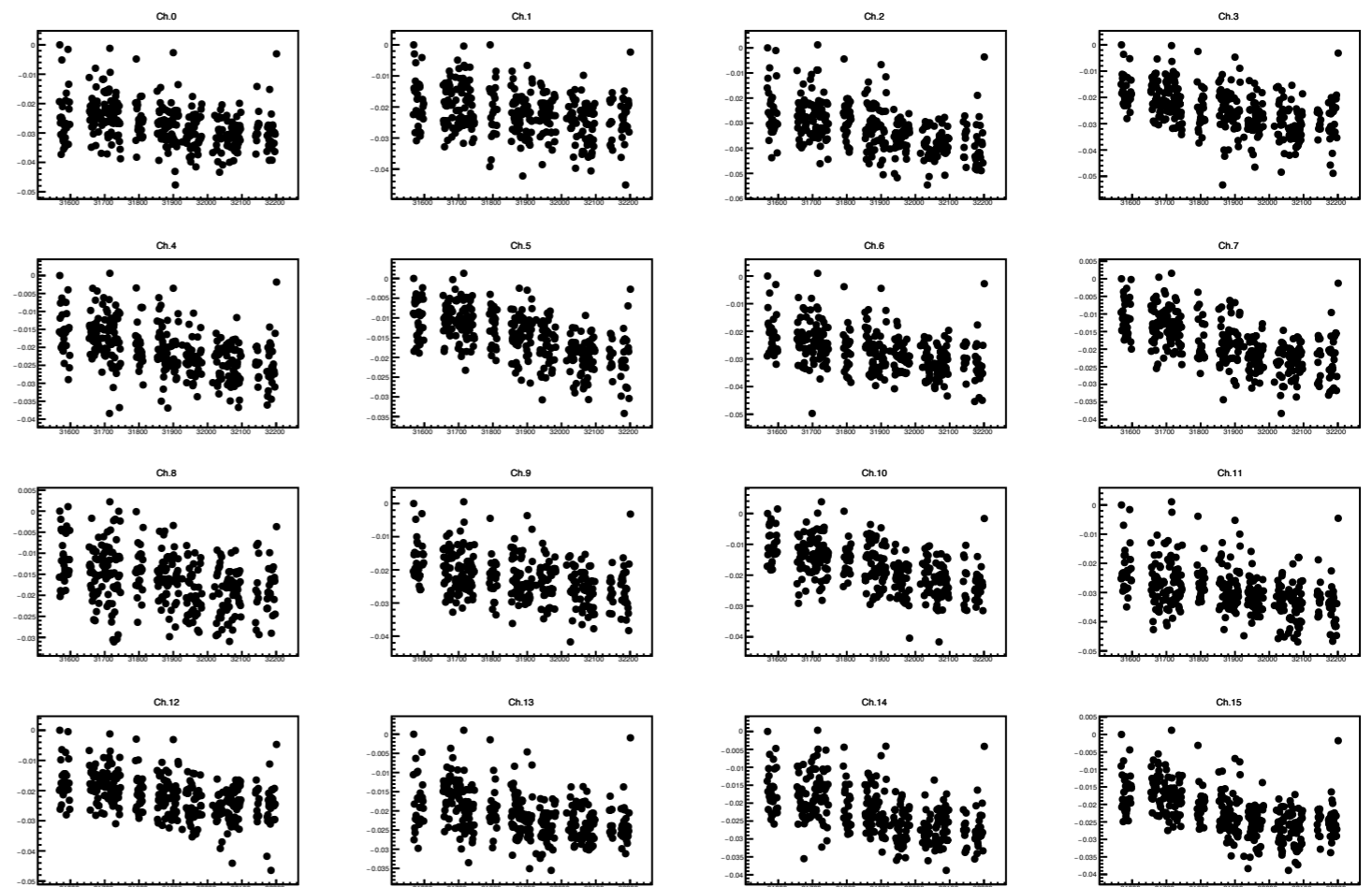
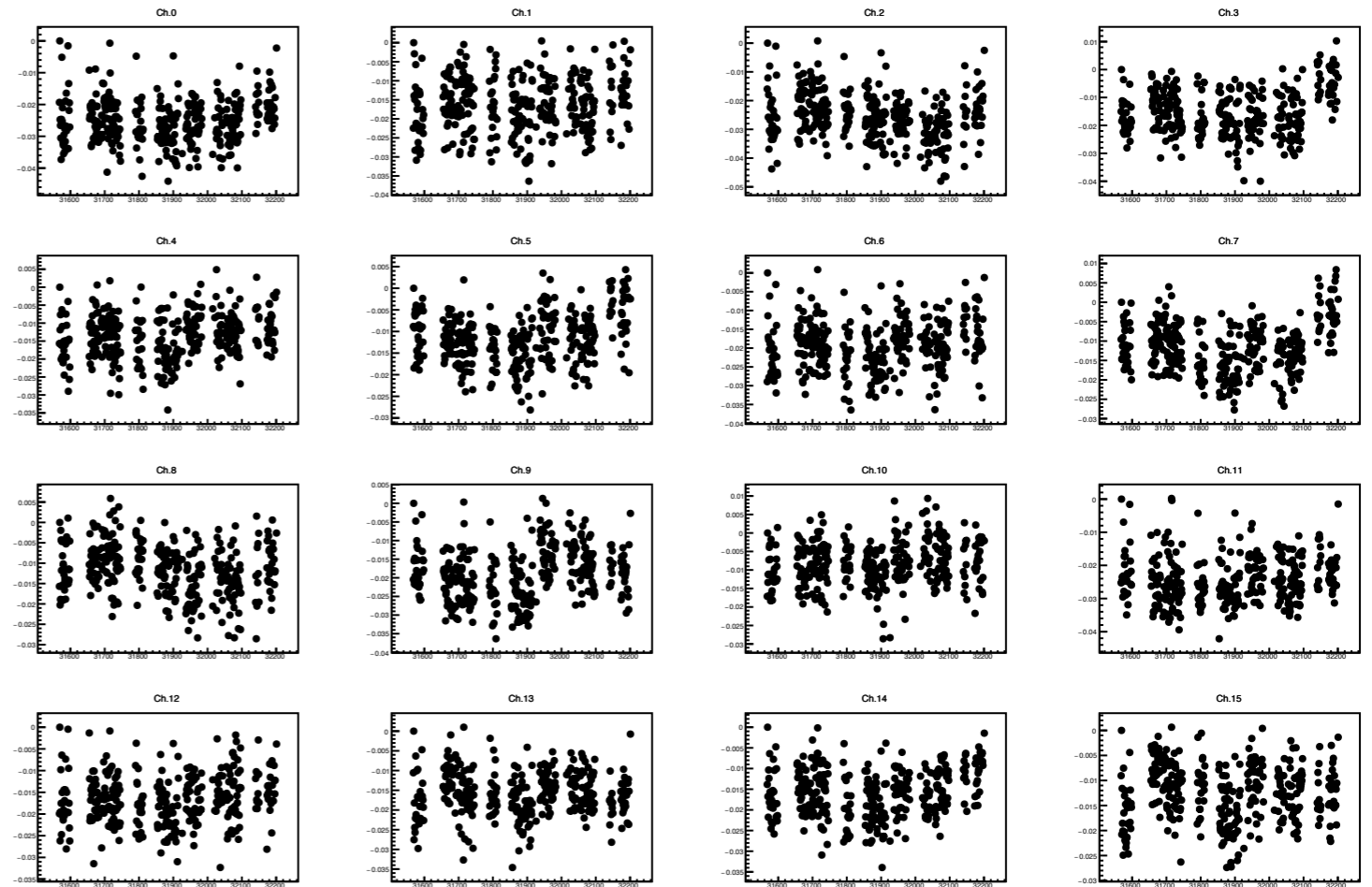
Run31568 ~ Run32201(Run 82)

Ref. Run = Run31569

Slope

Fit Range : 0.5 ~ 10

Each period calibration factor



Only period 6 calibration factor

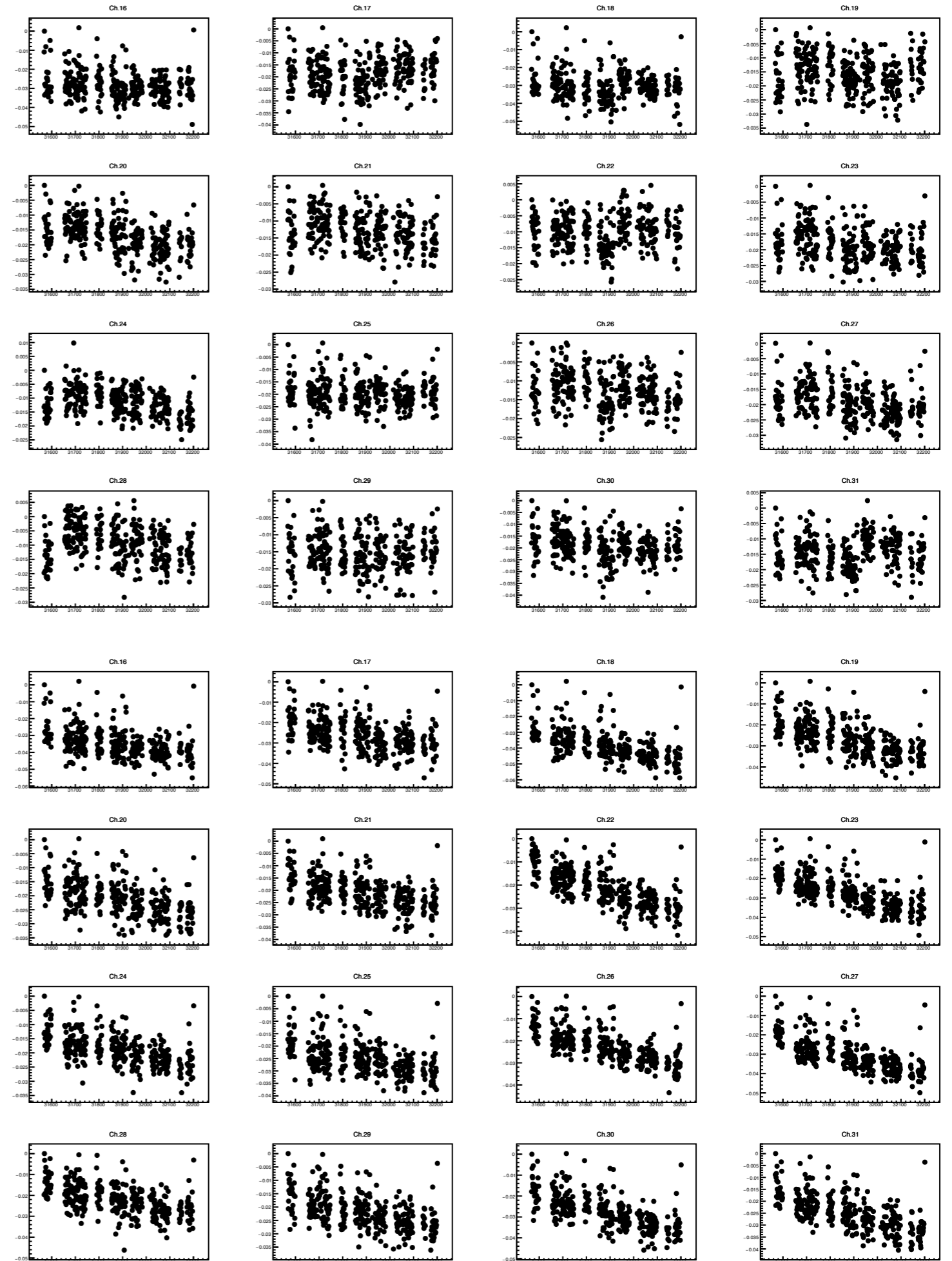
Run31568 ~ Run32201(Run 82)

Ref. Run = Run31569

Slope

Fit Range : 0.5 ~ 10

Each period calibration factor



Only period 6 calibration factor

Low Energy