

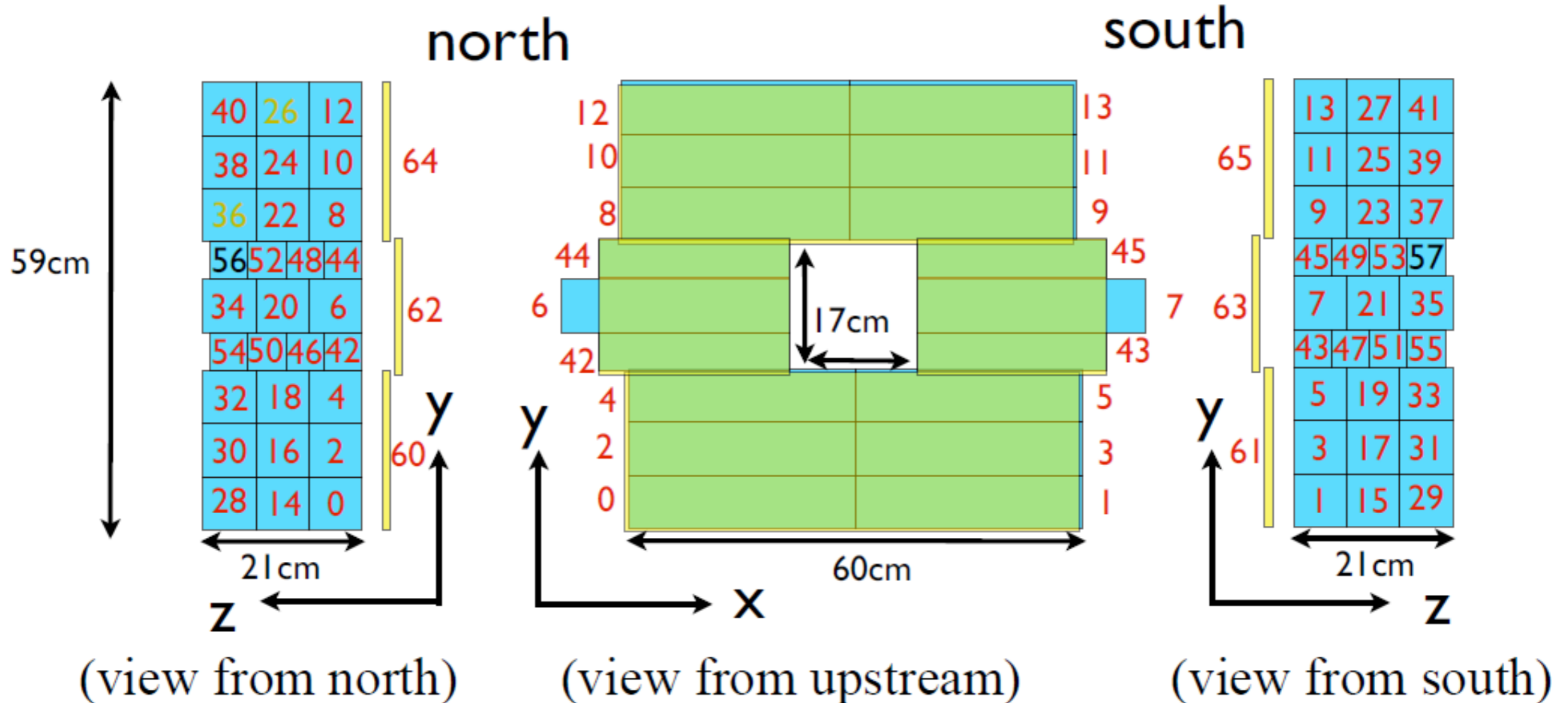
Daily report

7 June, 2019

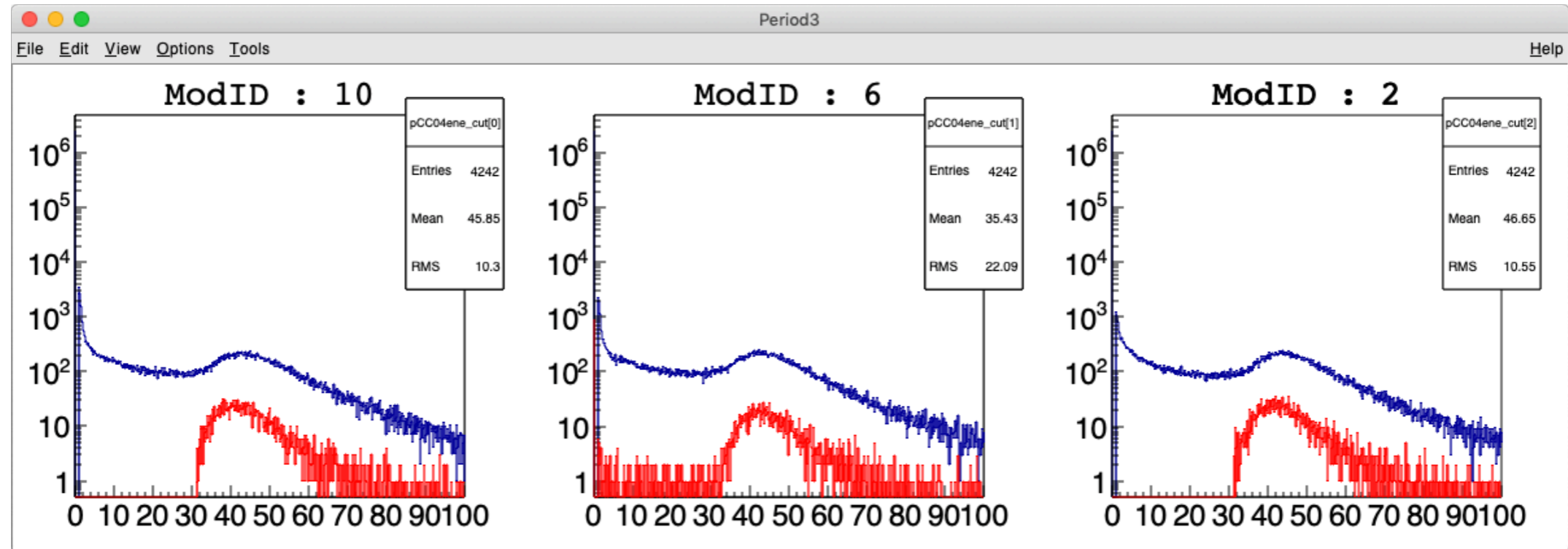
CC04

number=CC04ModID
 (with amp channel)
 (dead channel)

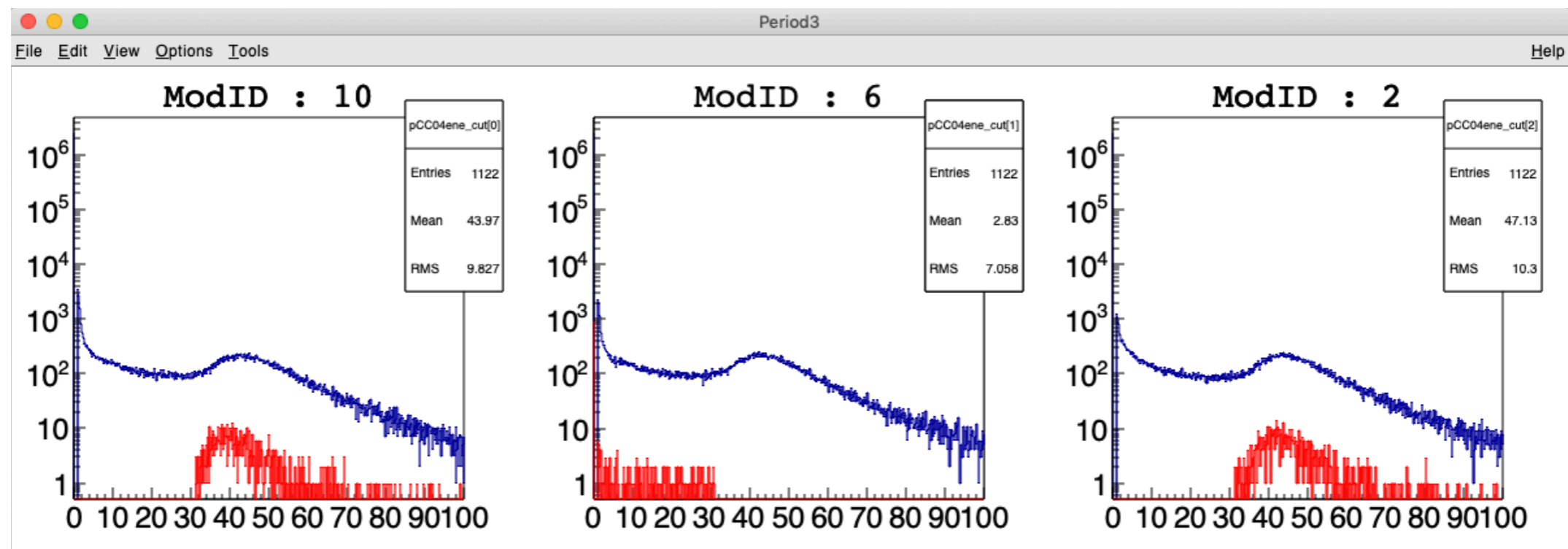
- 42 CsI crystals of 70×70×300mm,
 16 CsI crystals of 50×50×250mm,
 4 scintillator of thickness 10mm



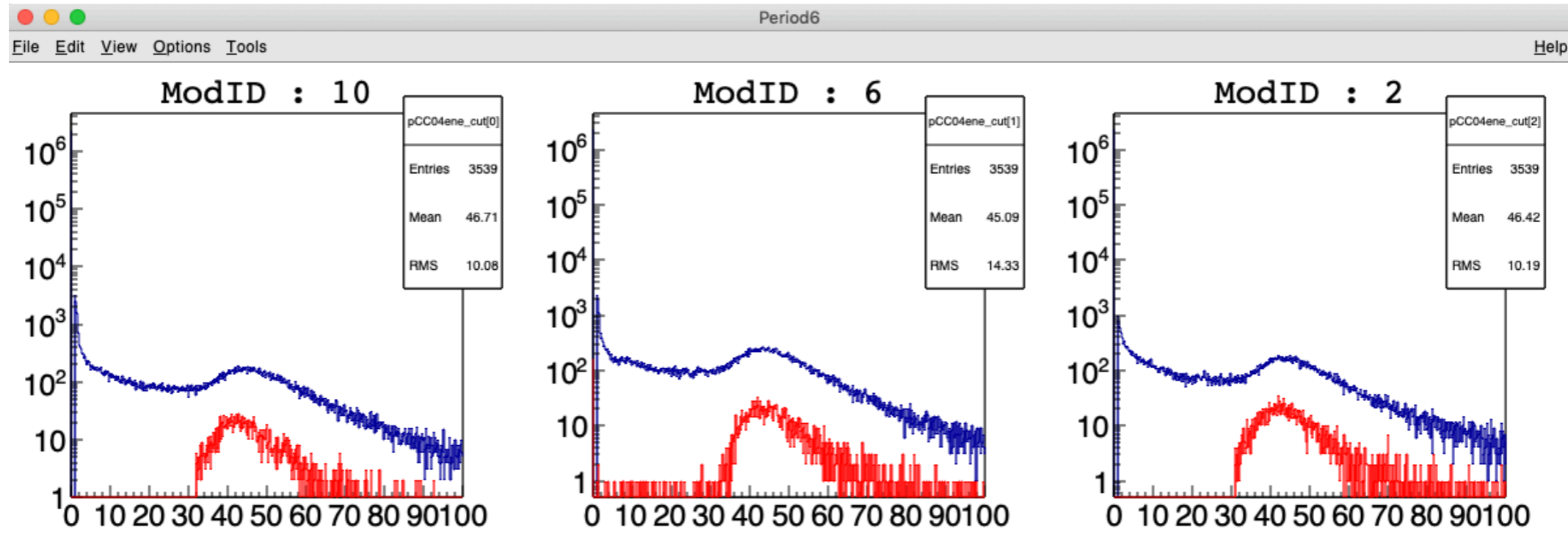
$CC04Energy[10] > CC04_thre[10] \ \&\& \ CC04Energy[2] > CC04_thre[2]$



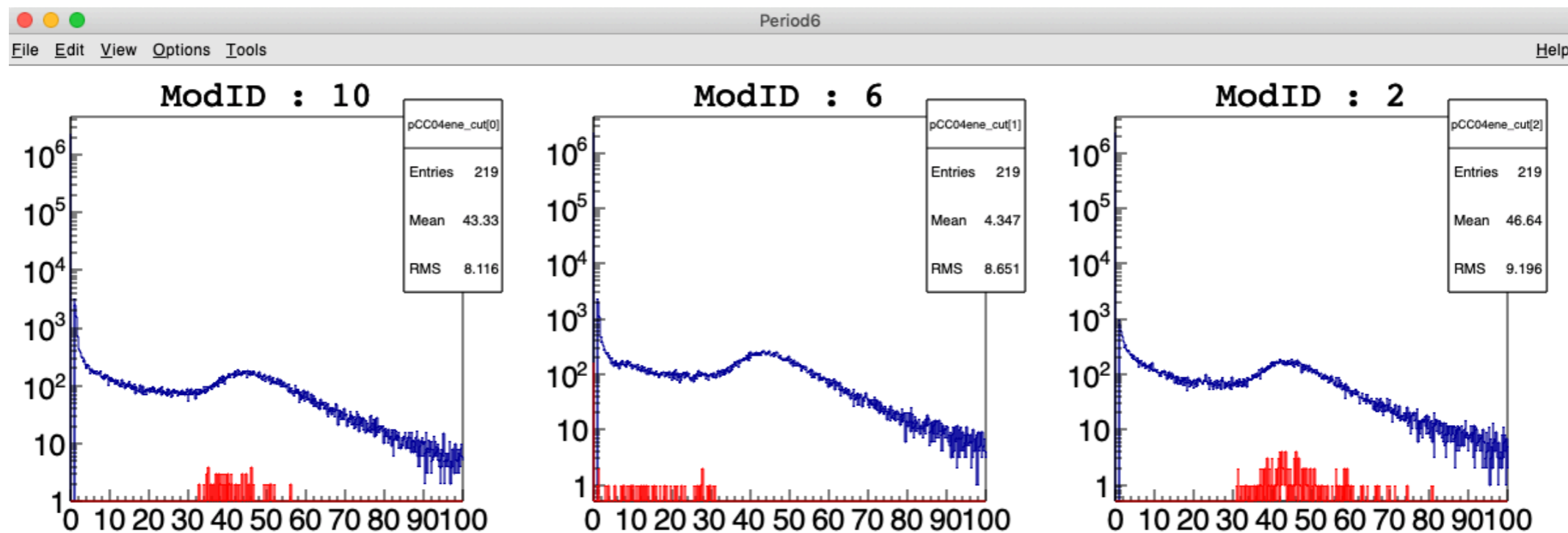
$CC04Energy[10] > CC04_thre[10] \ \&\& \ CC04Energy[6] < CC04_thre[6] \ \&\& \ CC04Energy[2] > CC04_thre[2]$



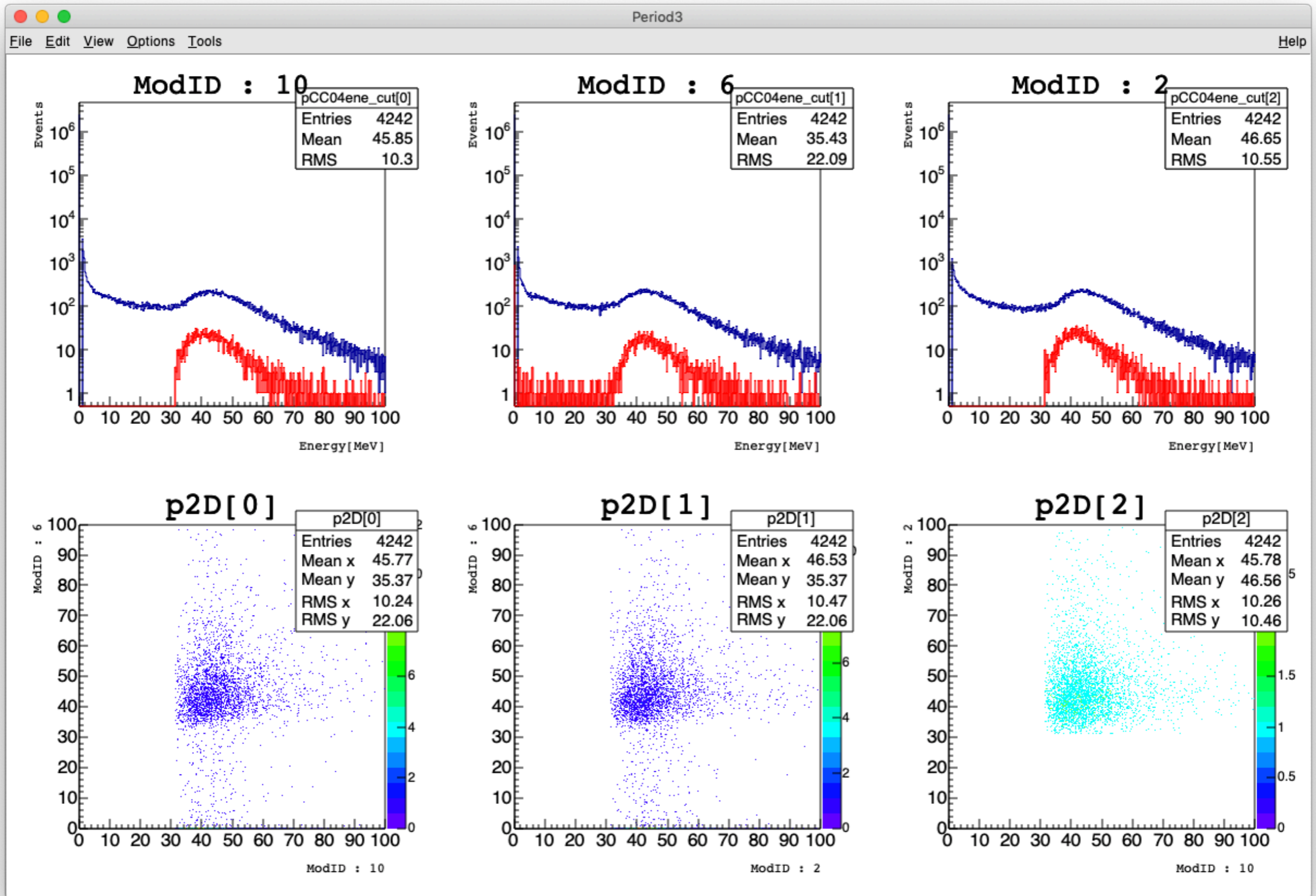
$CC04Energy[10] > CC04_thre[10] \ \&\& \ CC04Energy[2] > CC04_thre[2]$



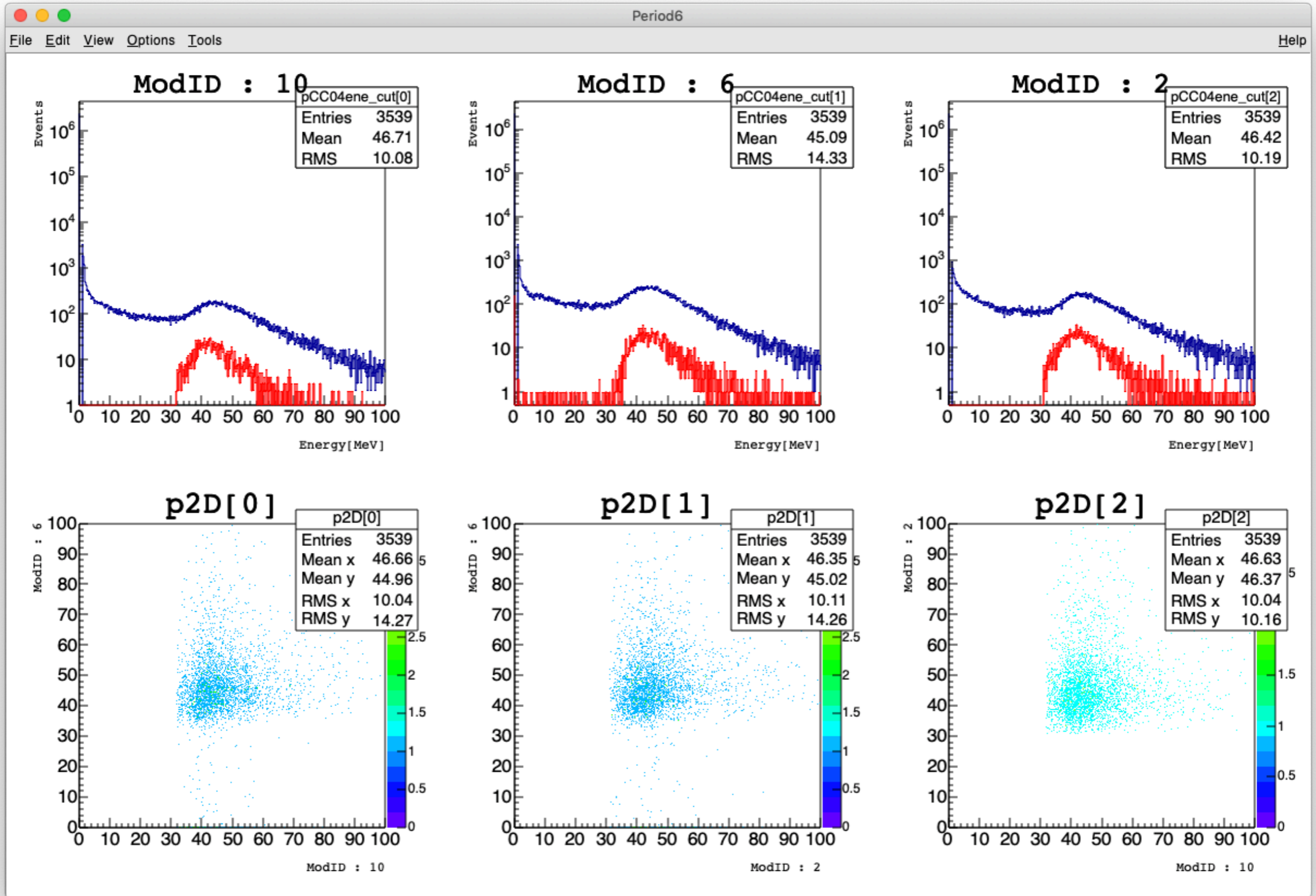
$CC04Energy[10] > CC04_thre[10] \ \&\& \ CC04Energy[6] < CC04_thre[6] \ \&\& \ CC04Energy[2] > CC04_thre[2]$



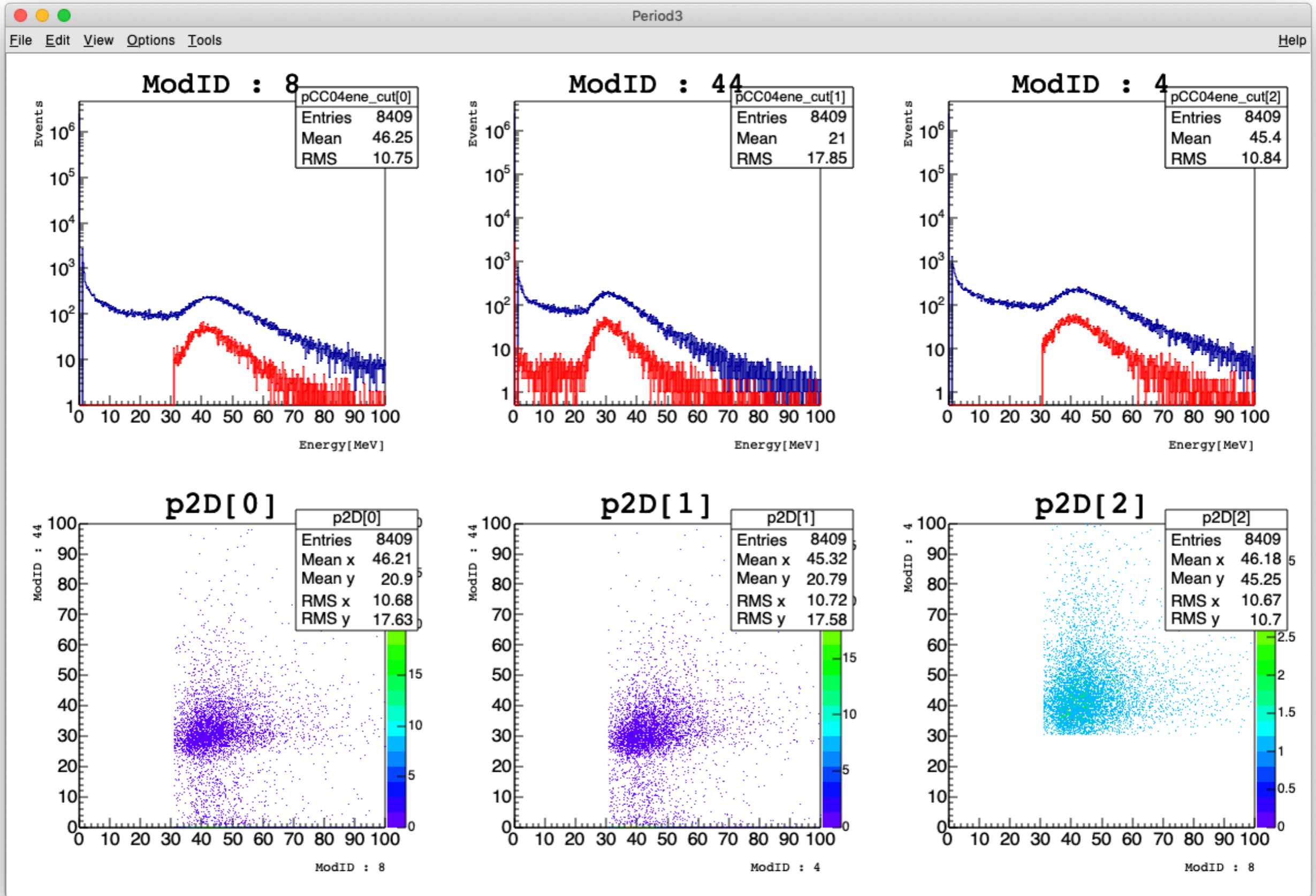
CC04Energy[10] > CC04_thre[10] && CC04Energy[2] > CC04_thre[2]



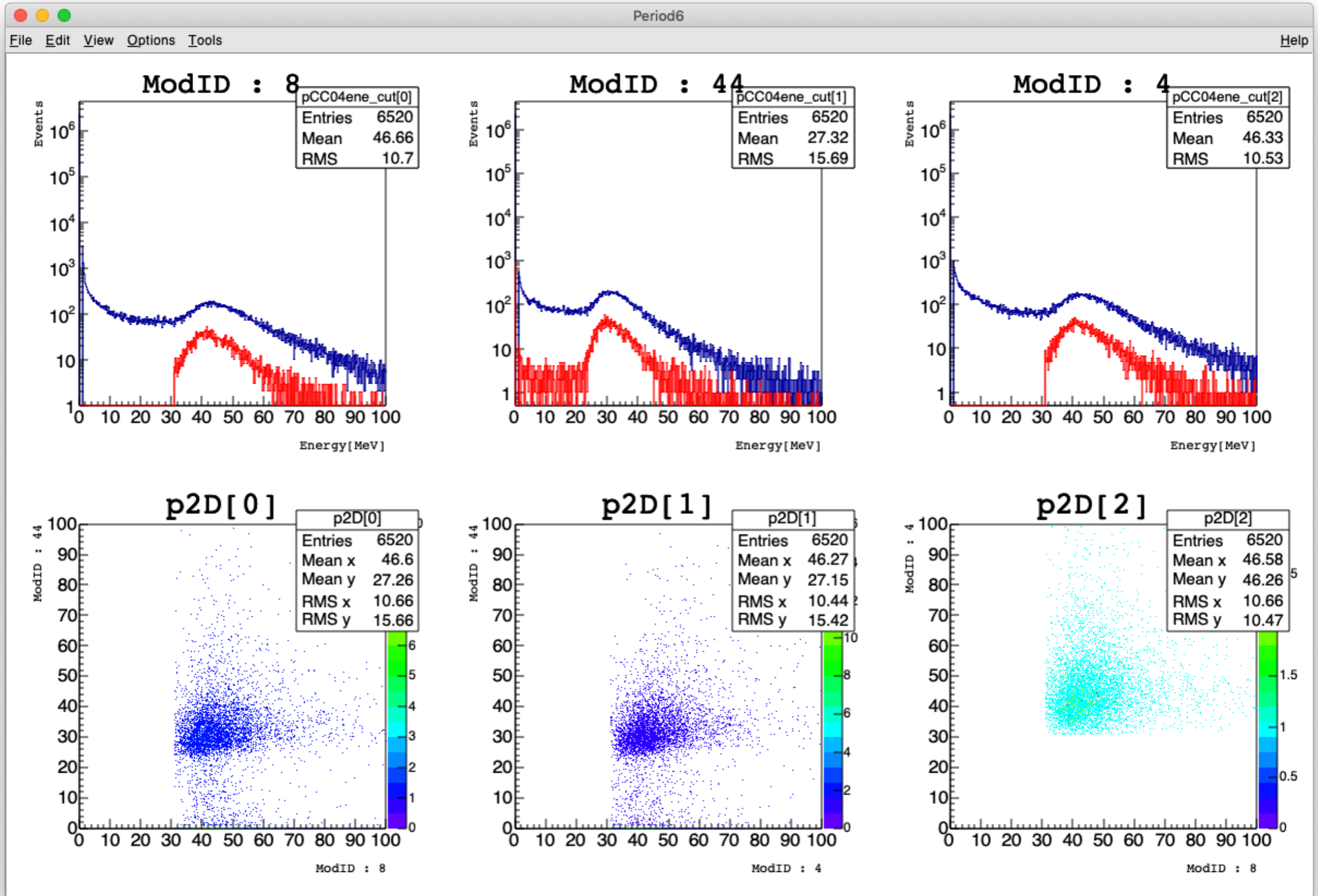
CC04Energy[10] > CC04_thre[10] && CC04Energy[2] > CC04_thre[2]



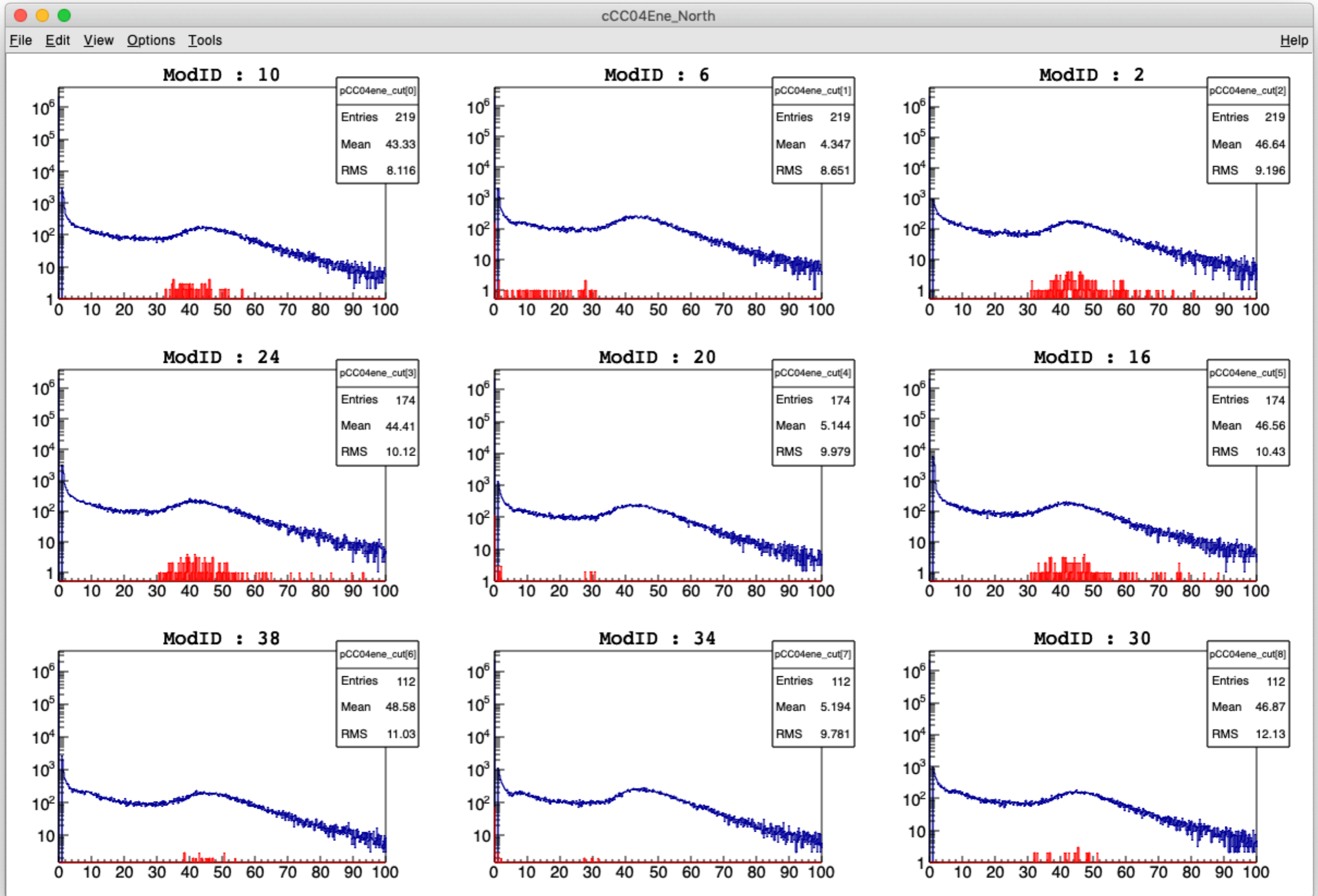
CC04Energy[8] > CC04_thre[8] && CC04Energy[4] > CC04_thre[4]



CC04Energy[8] > CC04_thre[8] && CC04Energy[4] > CC04_thre[4]



CC04_thre[i] = CC04thre;



$$CC04_thre[i] = CC04thre/0.7;$$

