

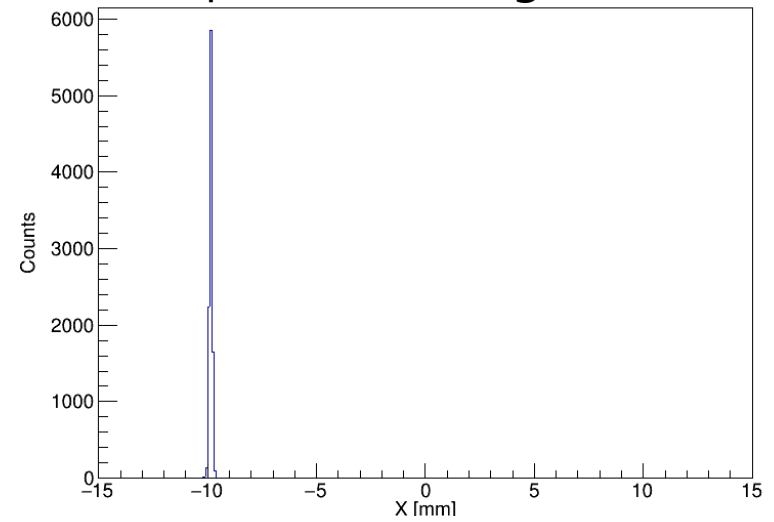
HANUL Meeting

August 21, 2018

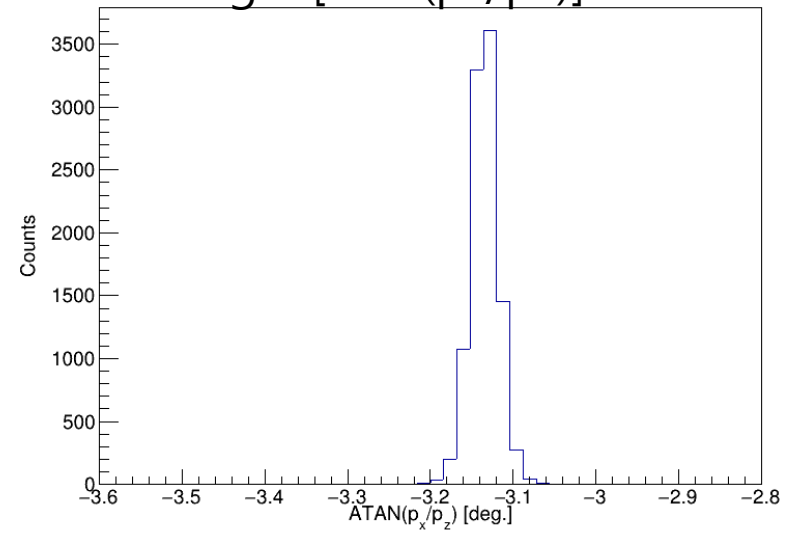
Seongbae Yang
Department of Physics
Korea University

Beam Condition

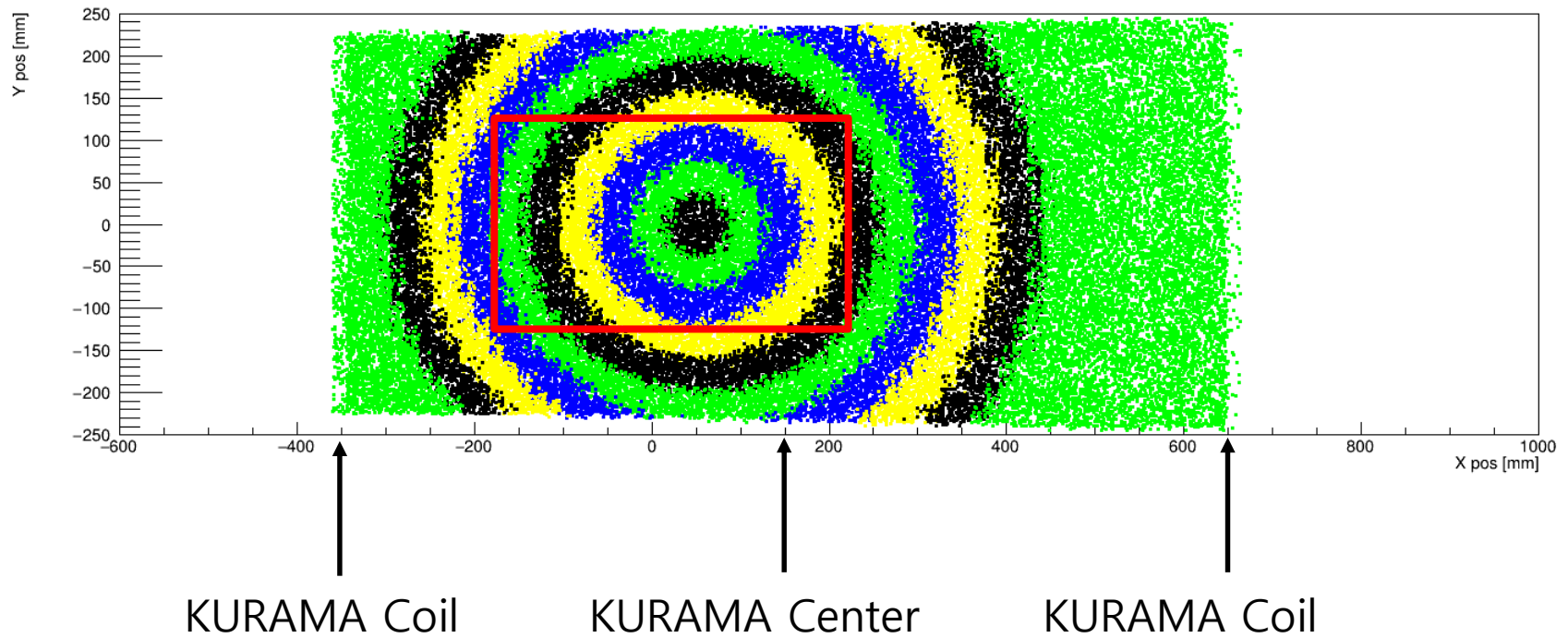
X position at target center



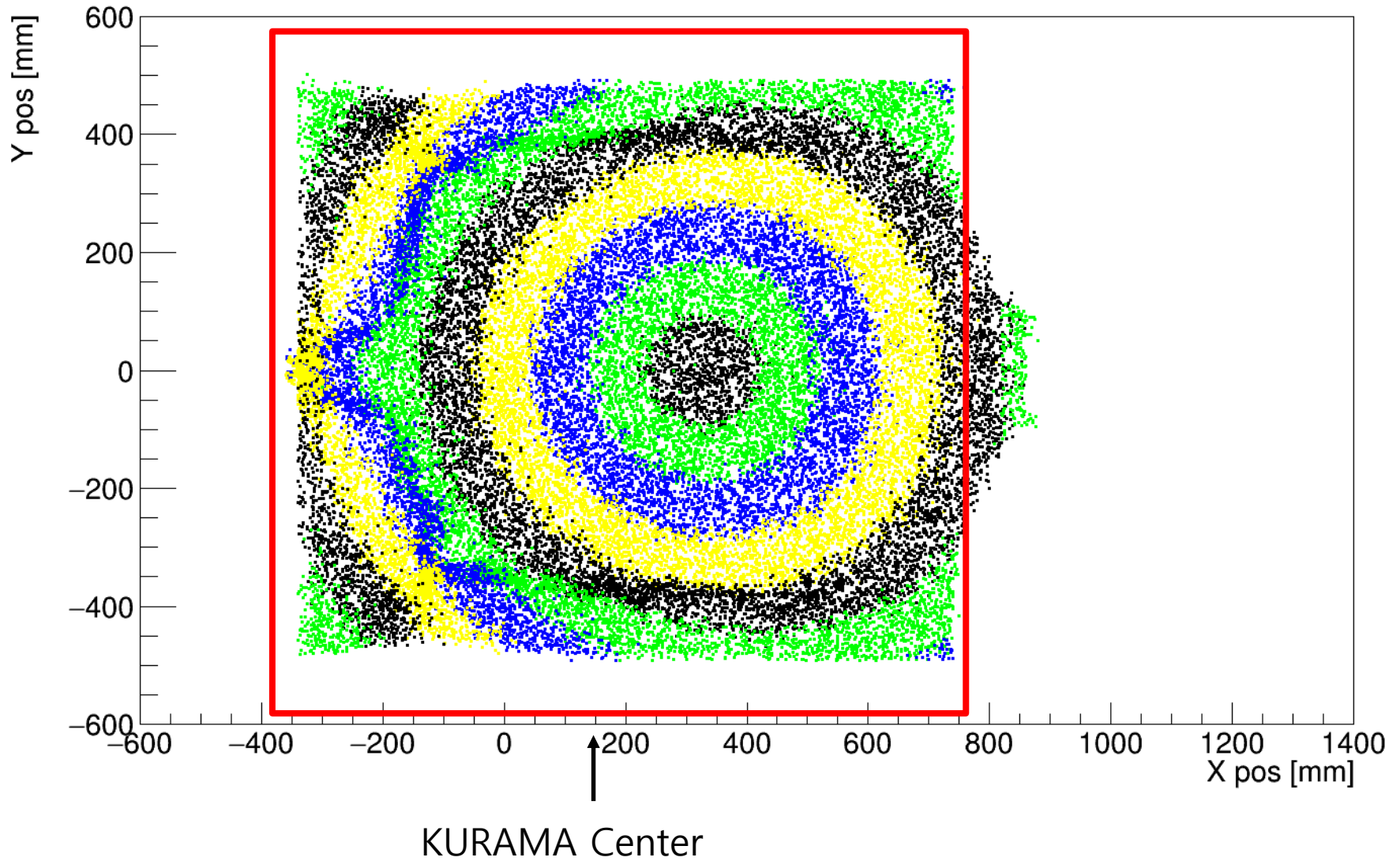
Angle [atan(px/pz)]



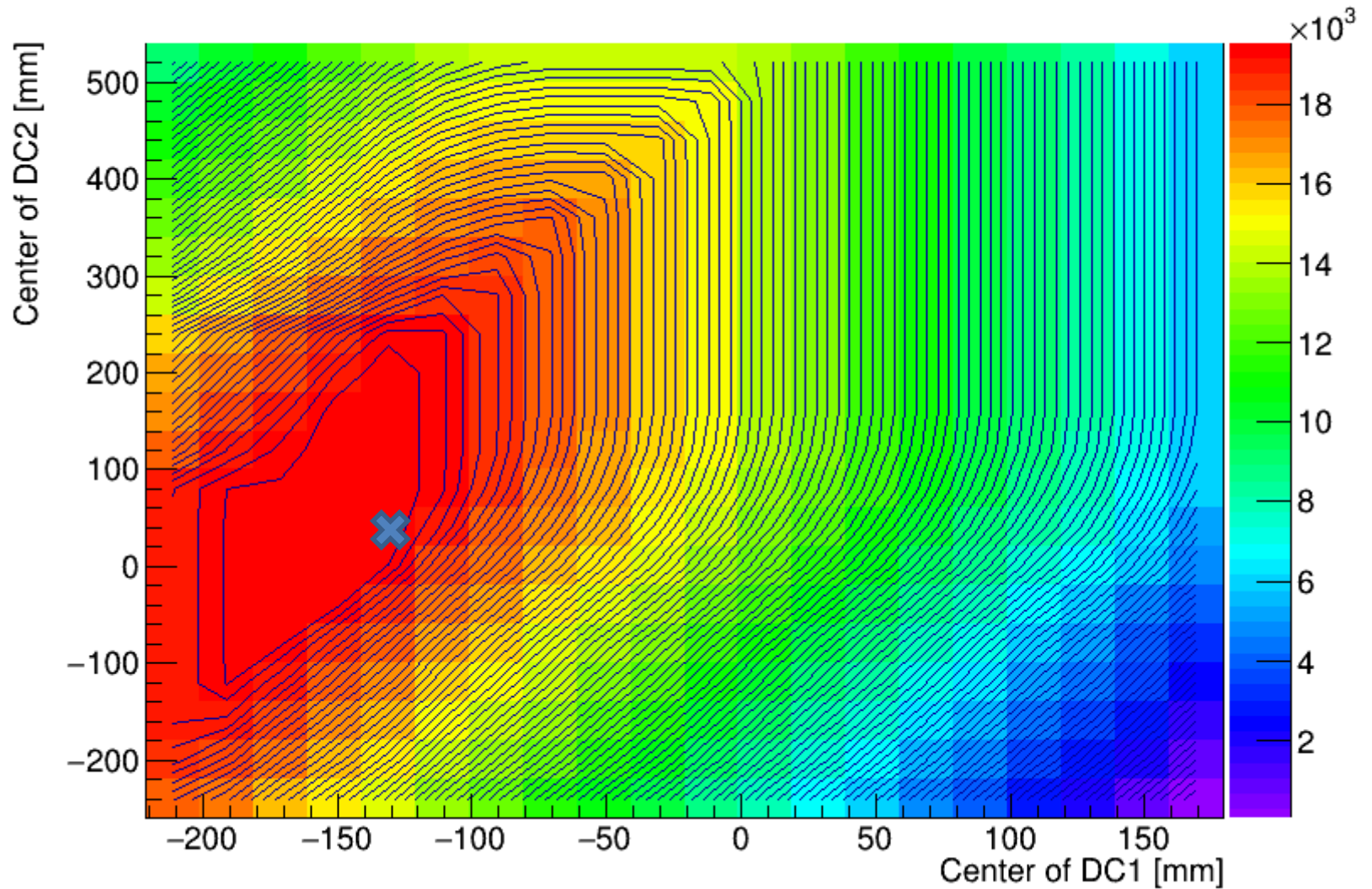
DC1 Hit Pattern



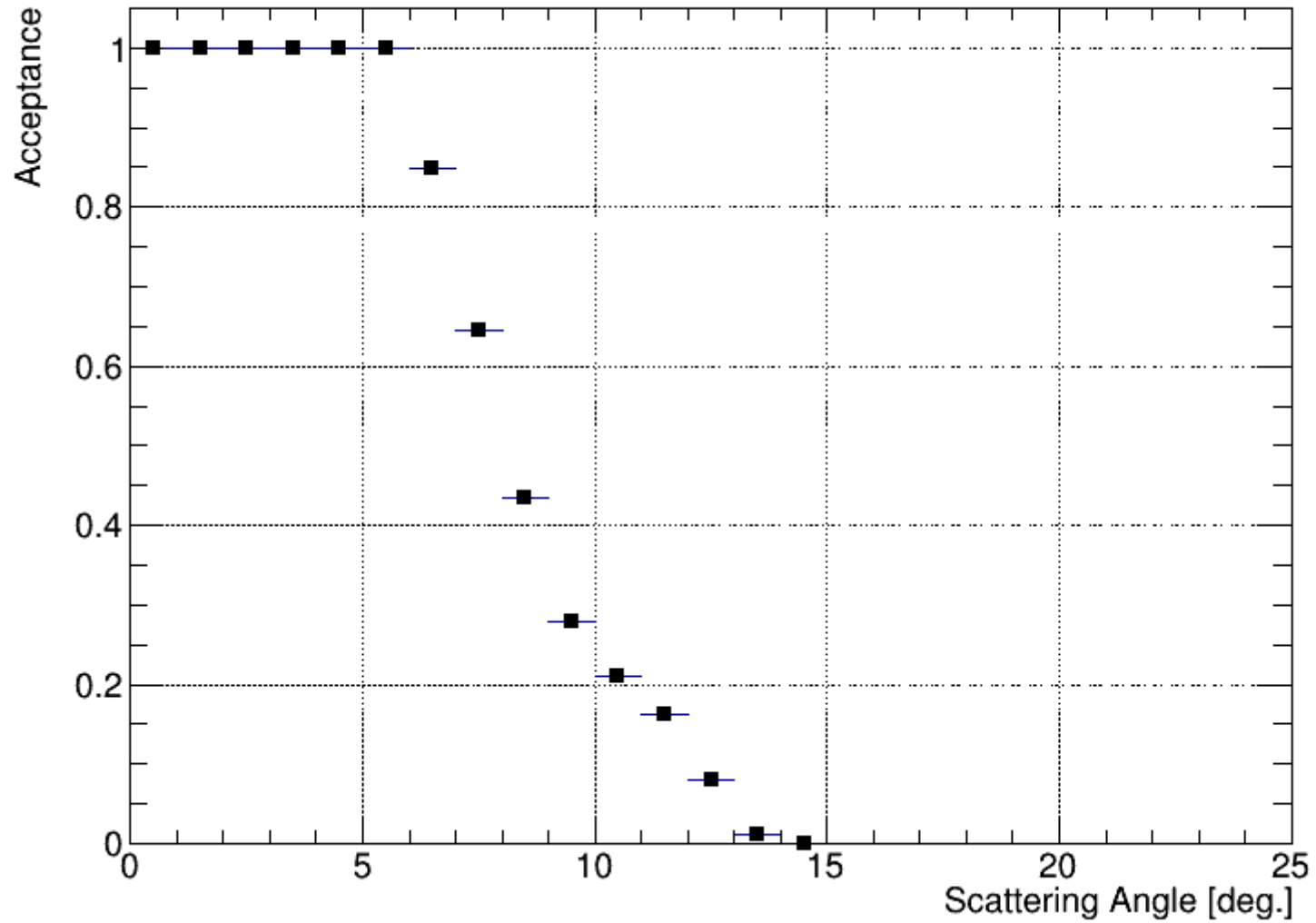
DC2 Hit Pattern



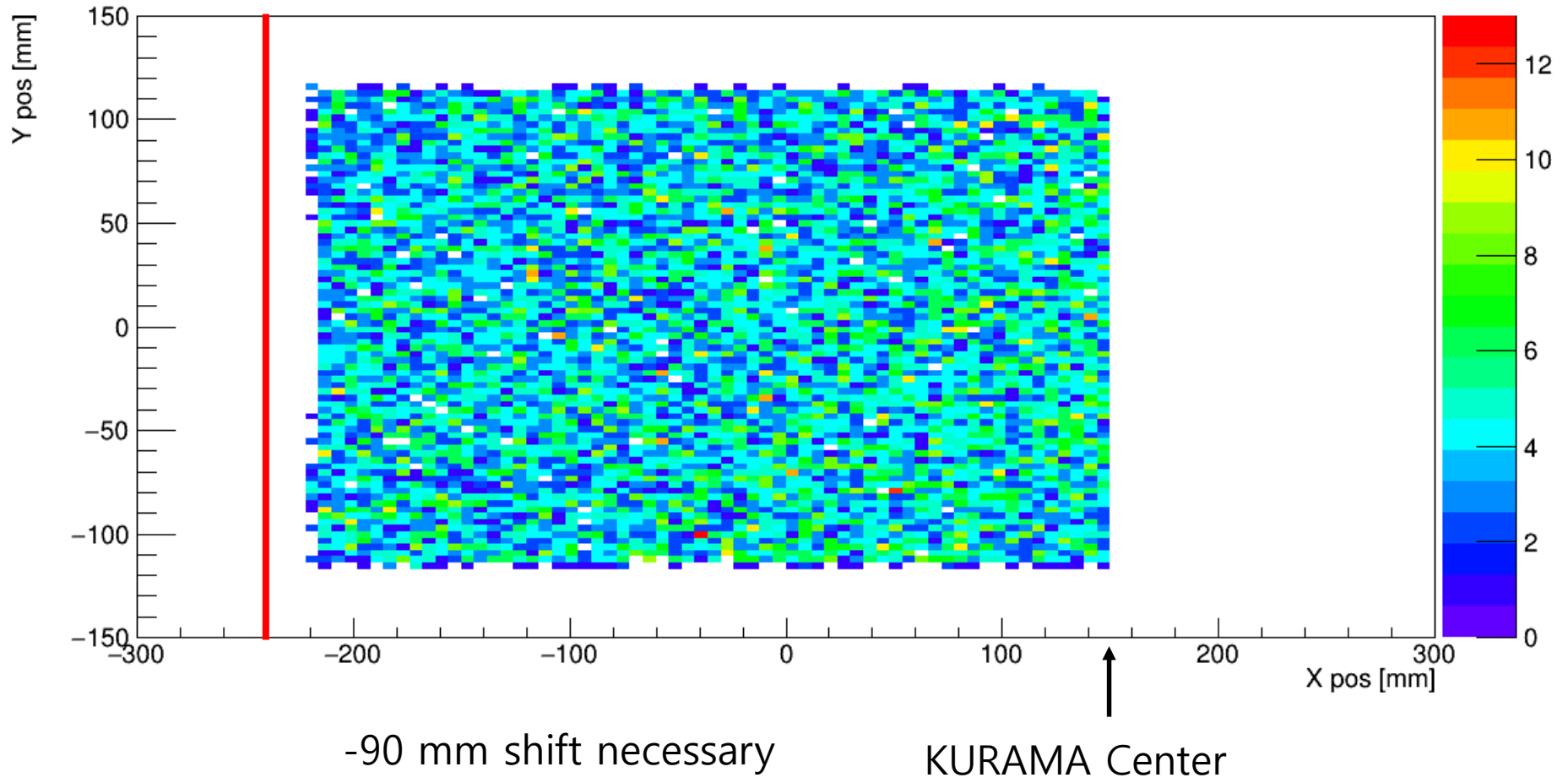
Optimization of DC1 and DC2 Position



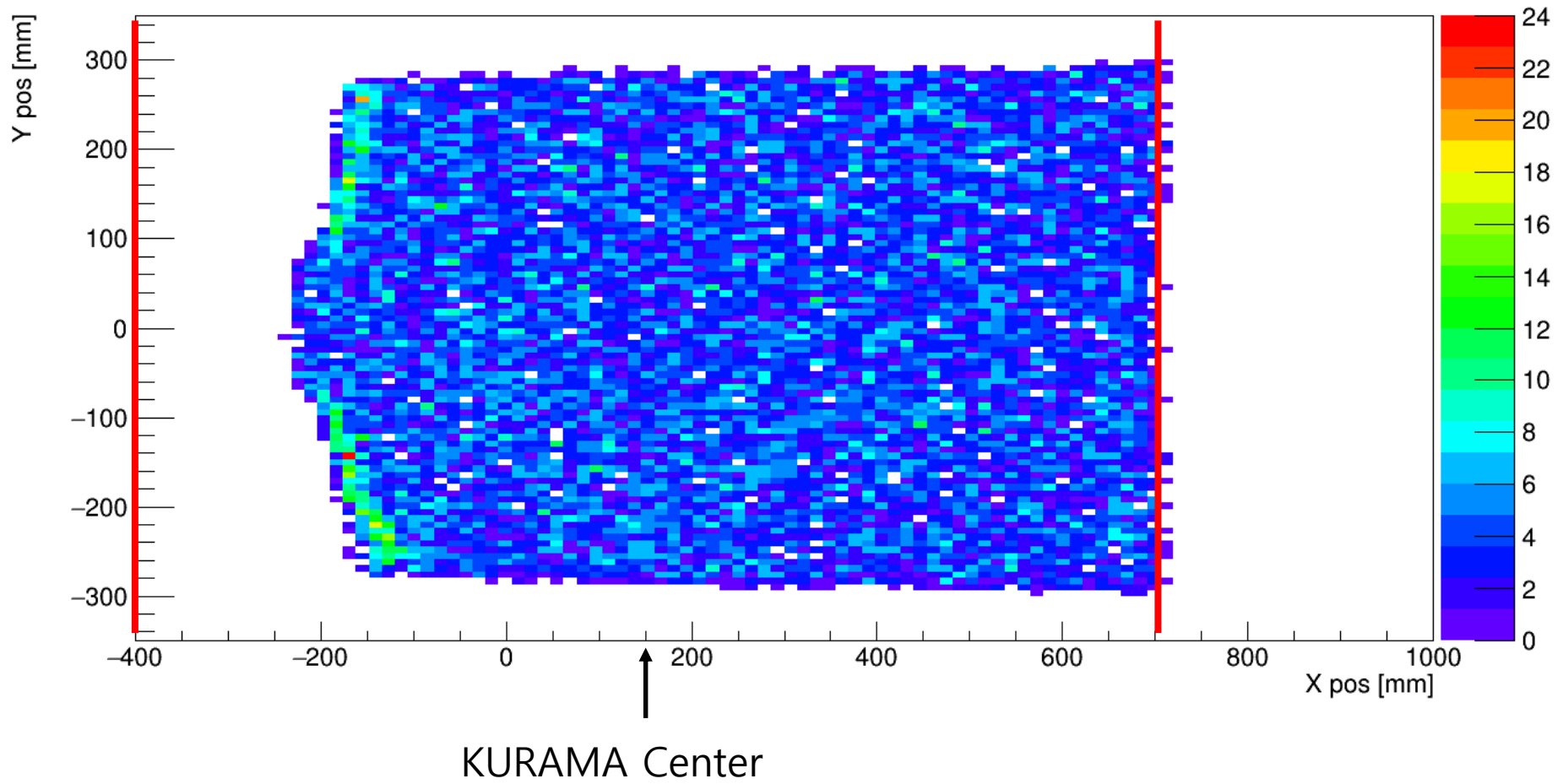
Best Condition



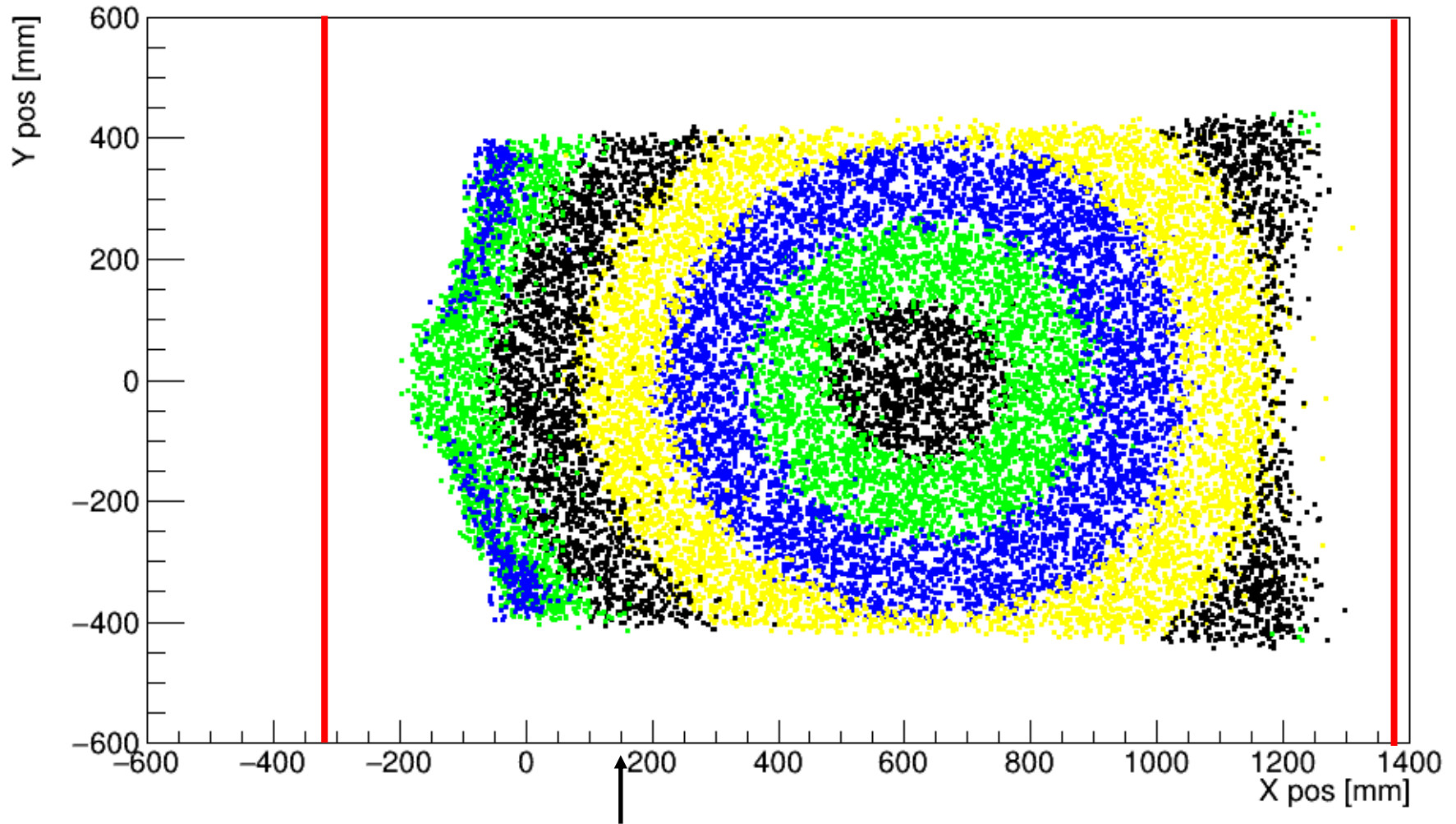
Upstream End Guard Hit Pattern



Downstream End Guard Hit Pattern

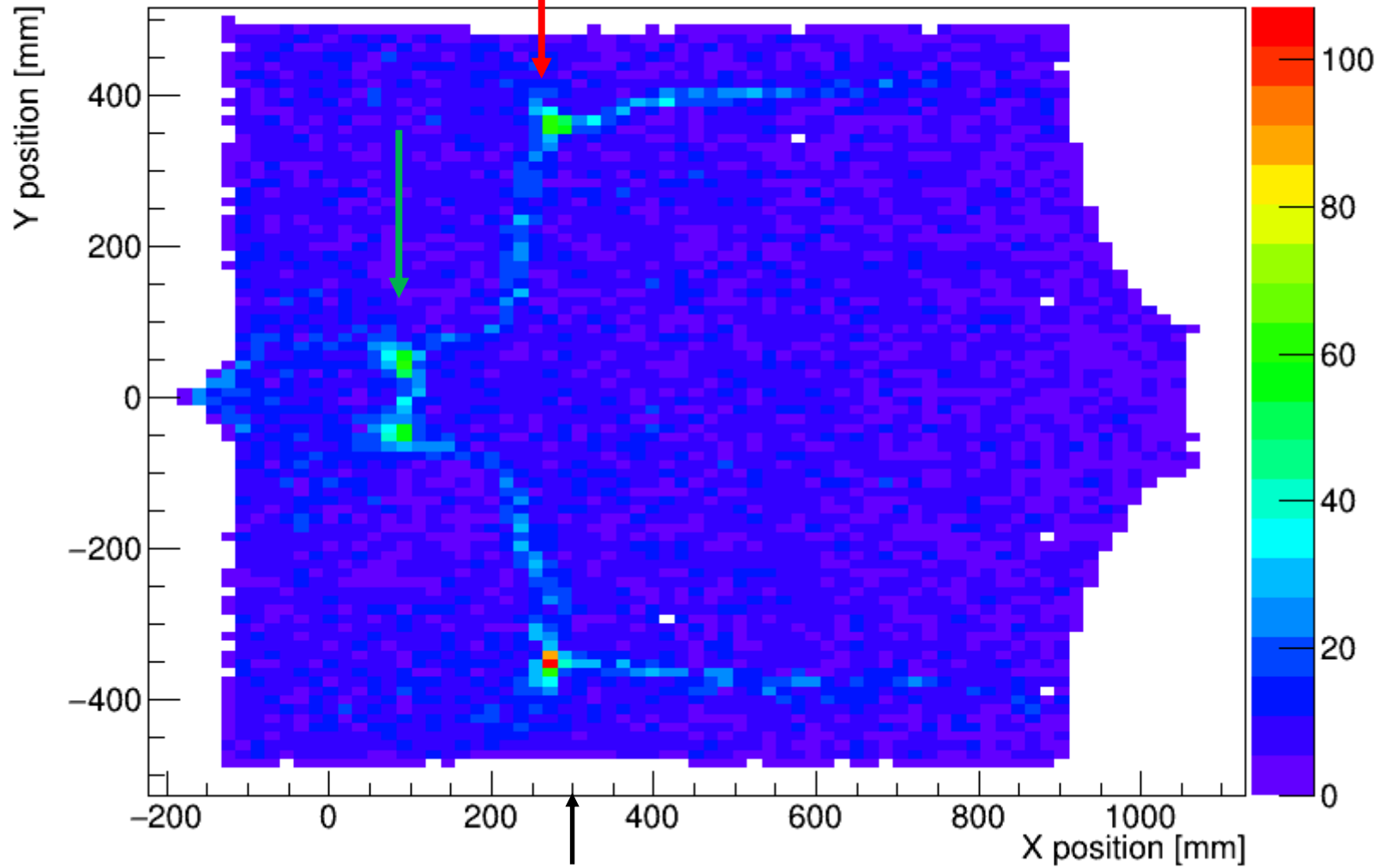


FTOF Hit Pattern



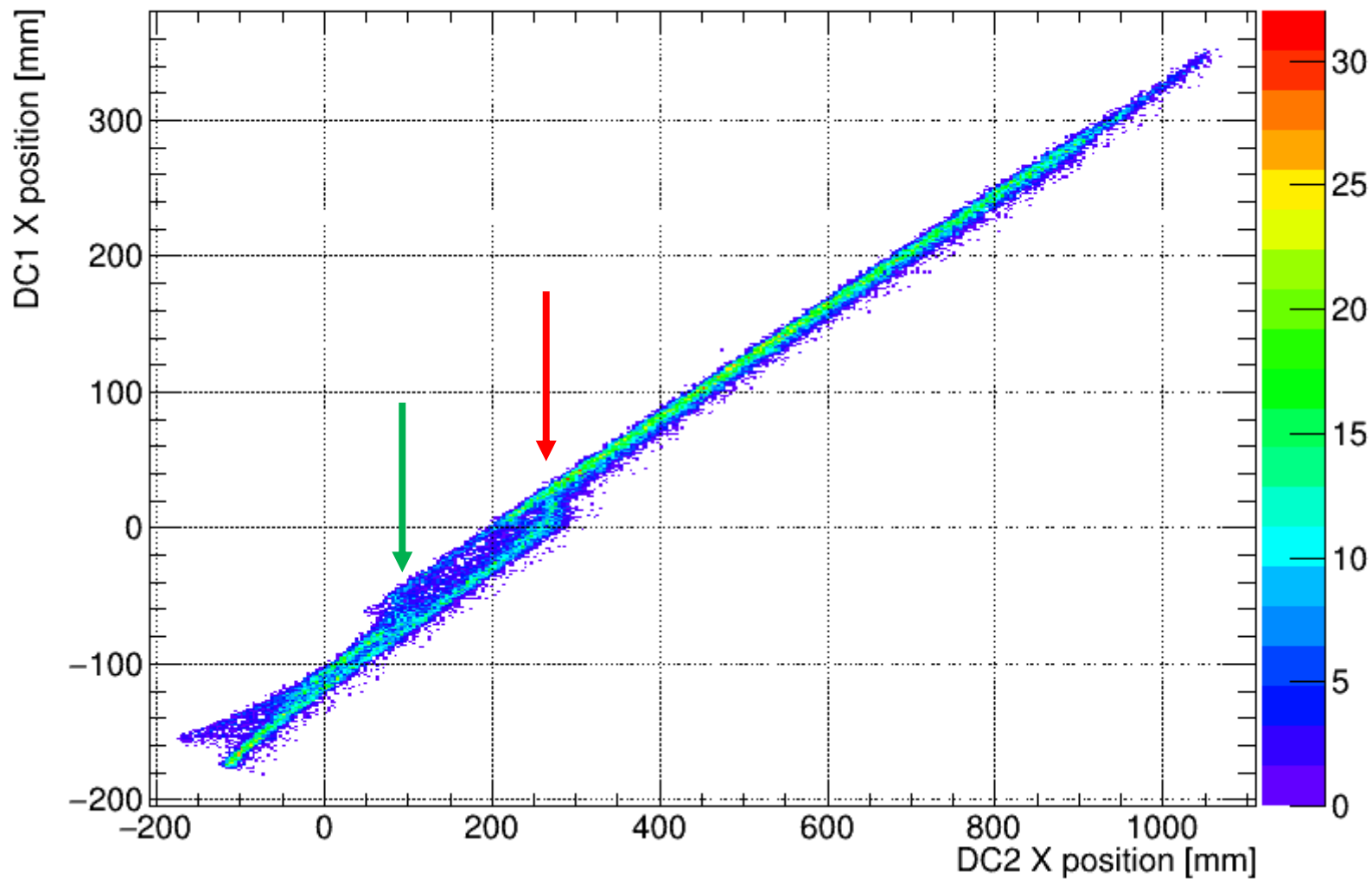
KURAMA Center

Hit Pattern at DC2

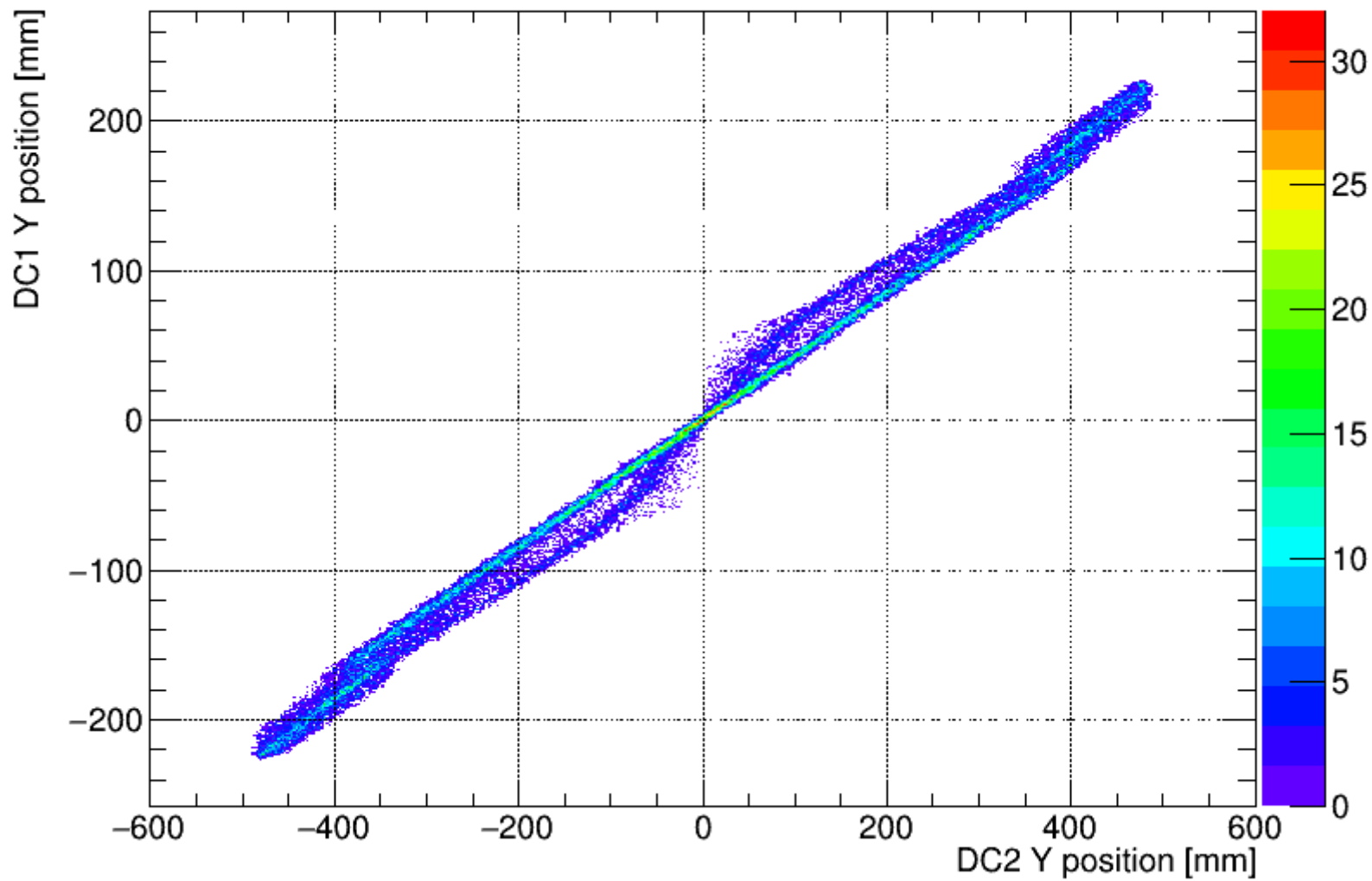


KURAMA Center

DC2X:DC1X

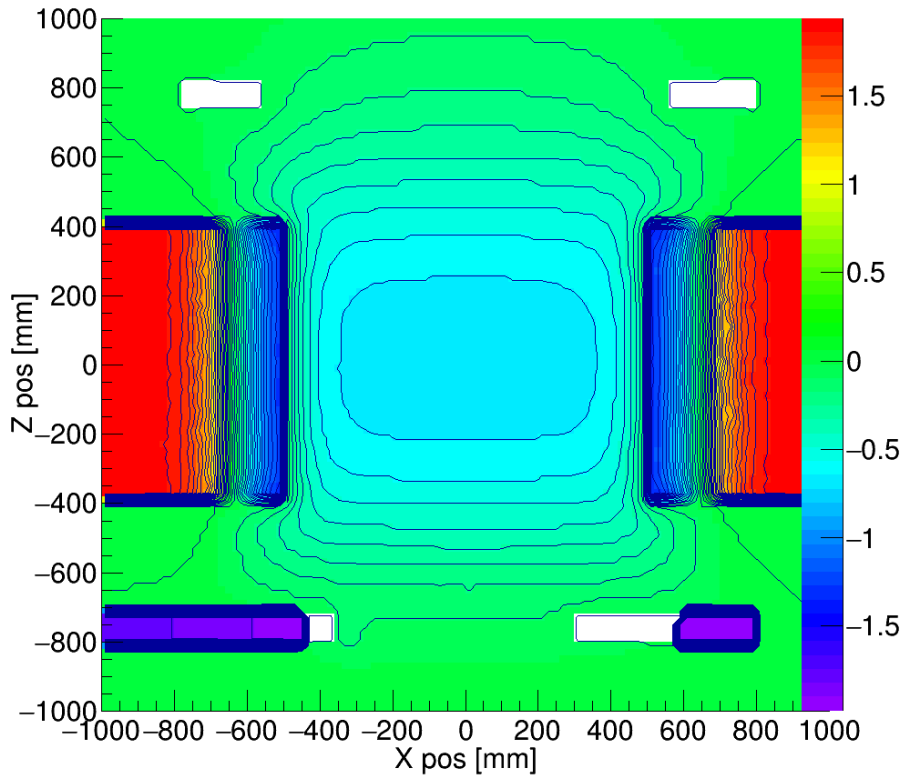


DC2Y:DC1Y



KURAMA Field Map

Y = 0



Z = -780 mm (Upstream endguard)

