

Group Meeting

1st. June. 2018

Byul Moon

Progress

1. 2nd reviewers' comments received for PLB.
2. Several calibrations done after visiting Osaka University.
3. Comparing results with different cut conditions for better data quality.

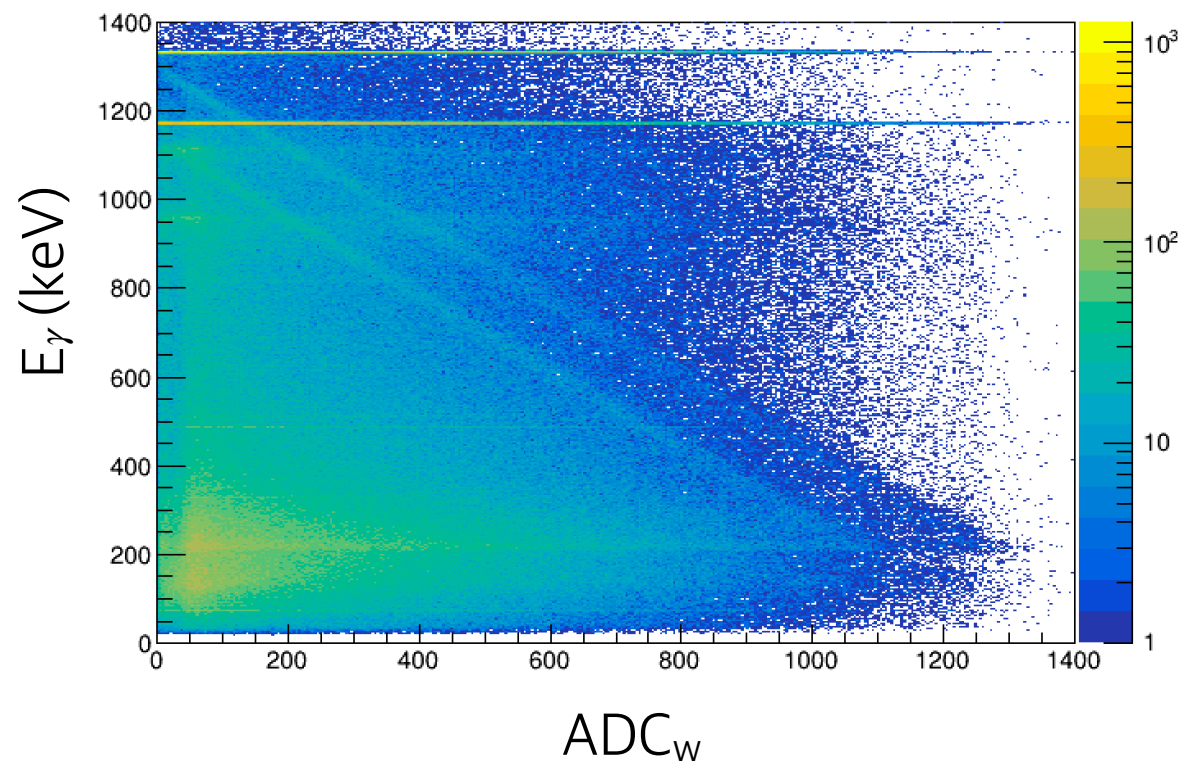
Status

Several calibrations and analyses were advanced after visiting Osaka University.

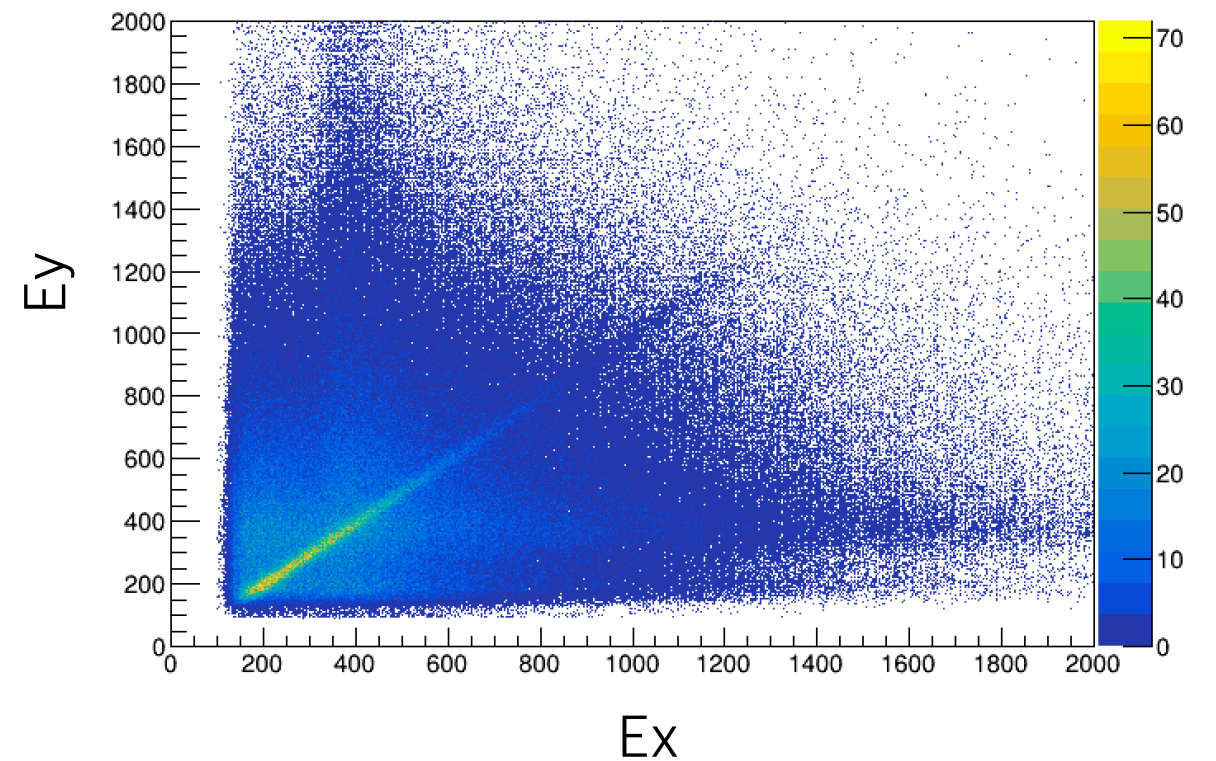
Calibrations	Energy	Timing	Efficiency
EURICA	O	O	$\triangle \rightarrow O$
WASABI	$X \rightarrow O$	$\triangle \rightarrow O$	-
LaBr	NO PLAN TO USE.		

WAS3ABi Energy Calibration

Correlation between WASABI & EURICA using ^{60}Co . (2nd WASABI layer with all x-strips.)

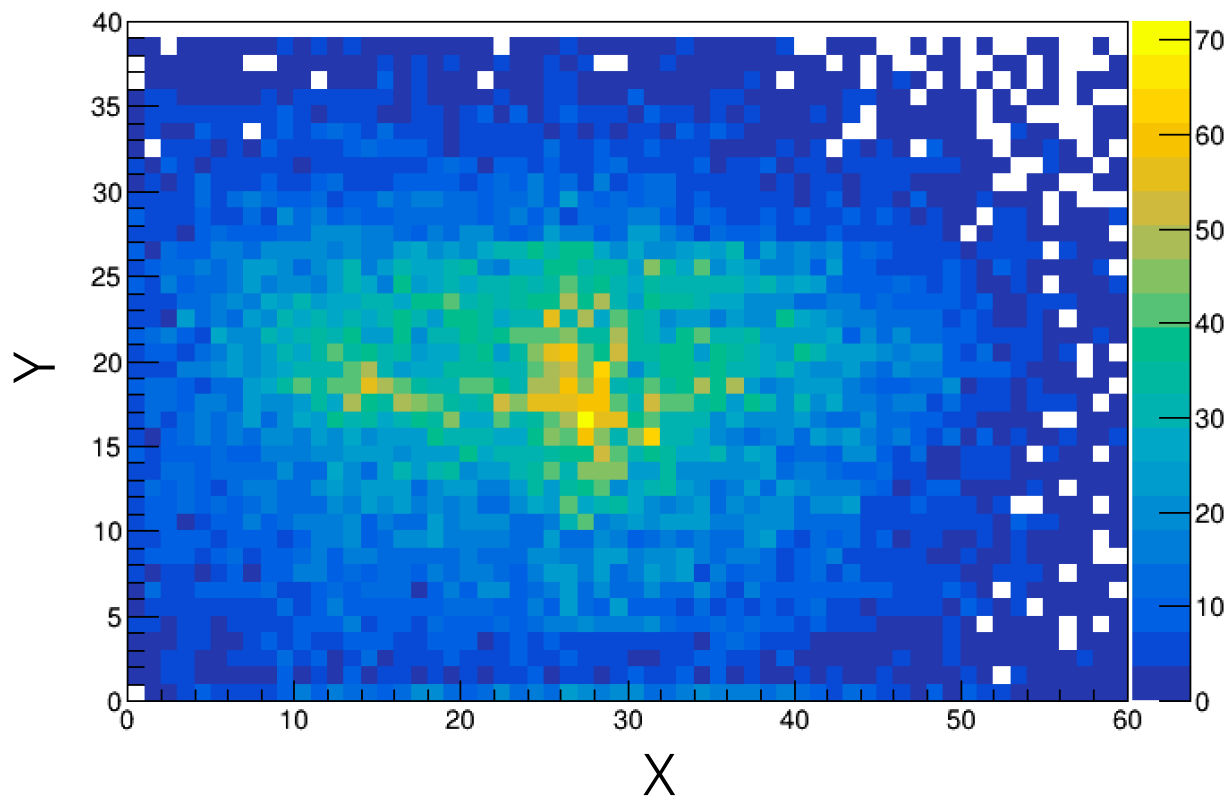


After calibration.

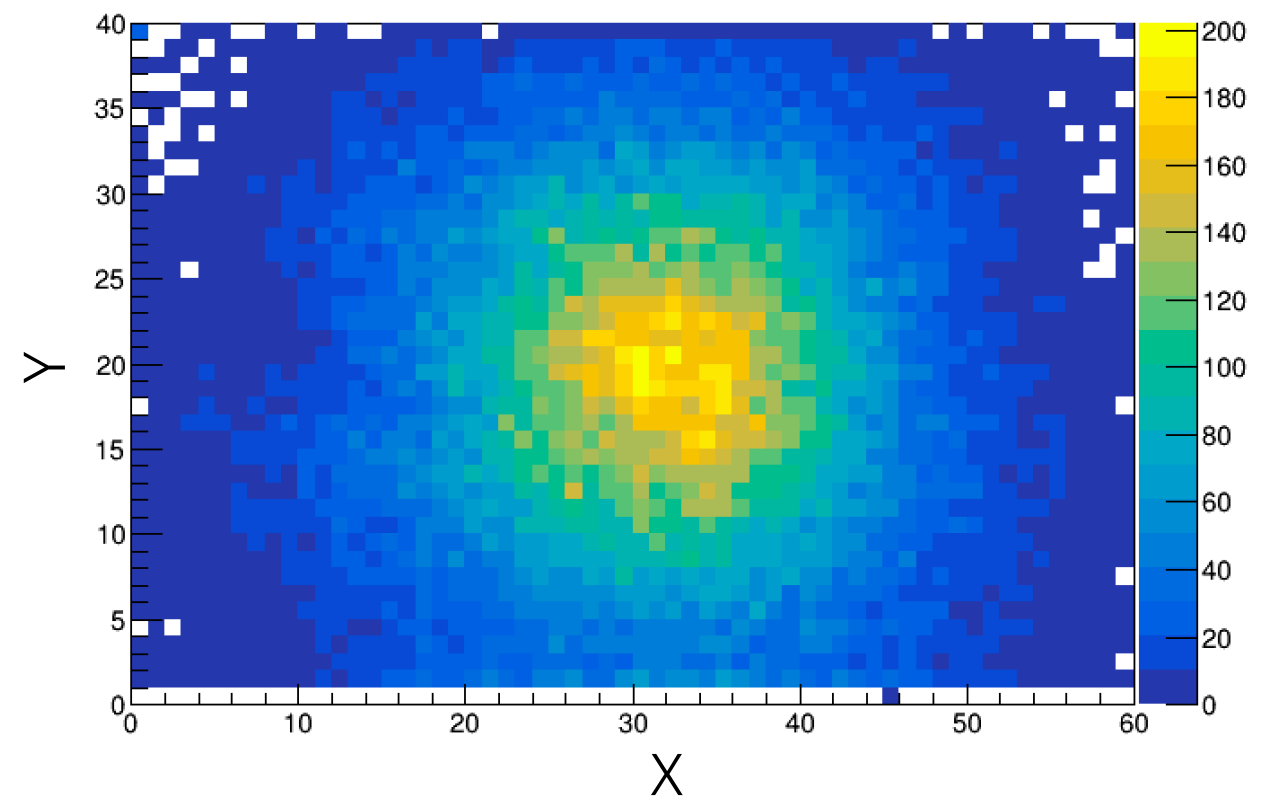


Problems

2nd Layer



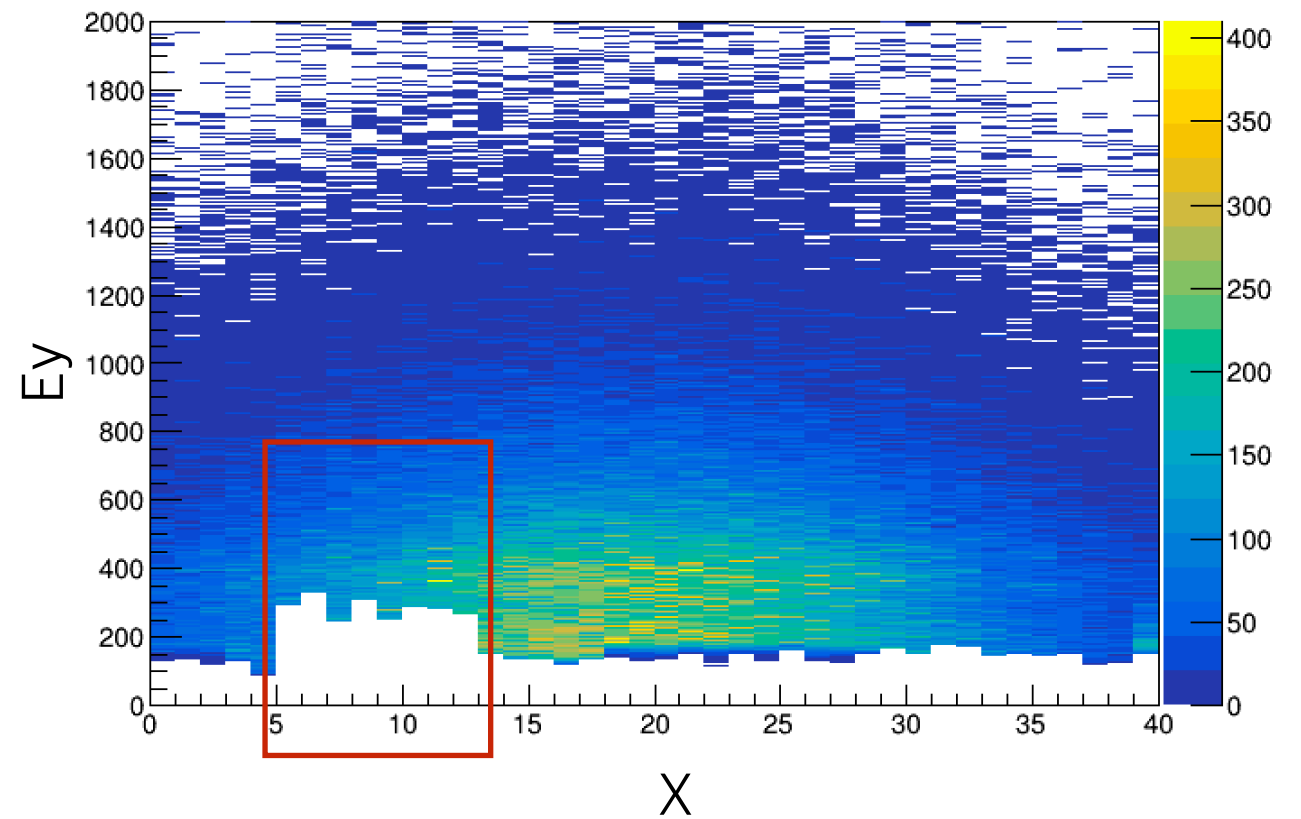
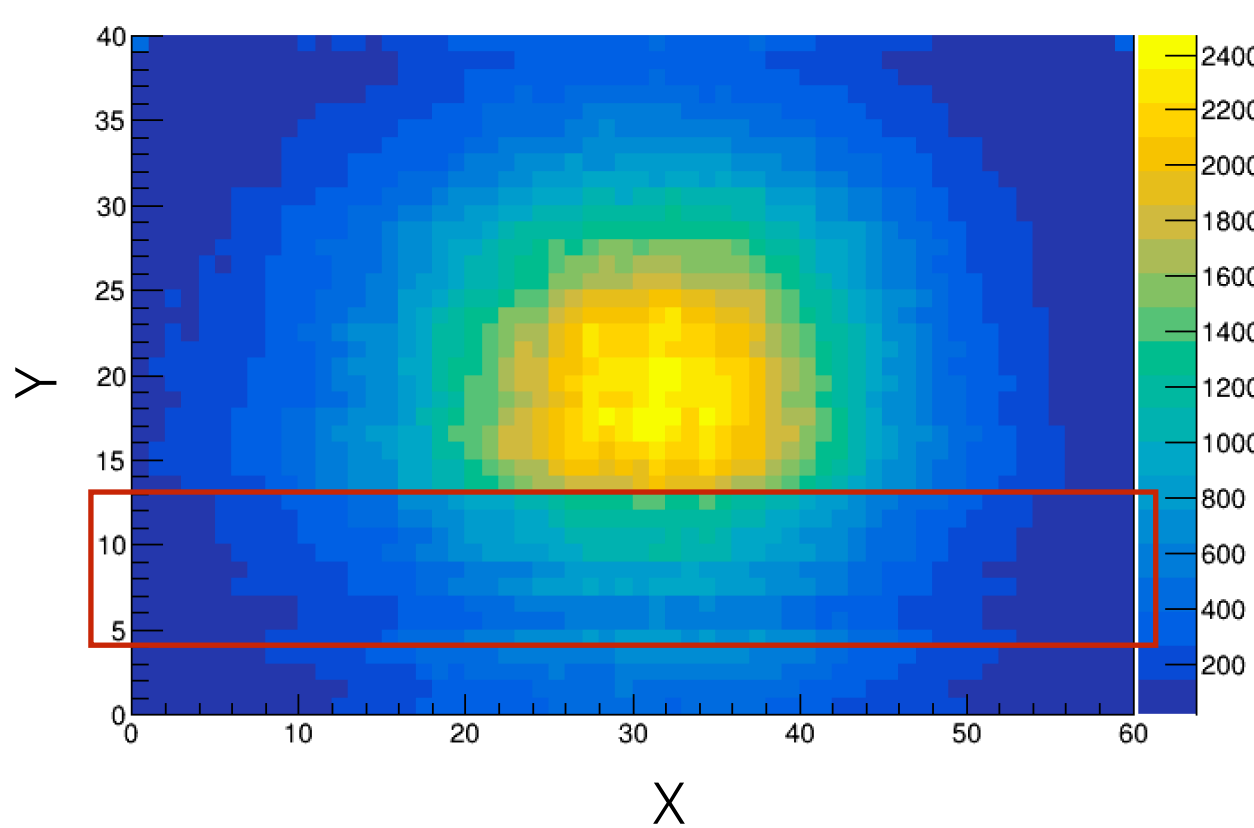
3rd Layer



Imbalanced implantation.

1. Check cut conditions.
2. Check calibrations.

Problems



Imbalanced implantation.
1. Due to extremely high thresholds.

Future Plan

1. Fix ion implantation problem.
2. Fix β -ray hit position problem.
3. BigRIPS analysis.
4. Revise the manuscript for PLB.