

# NKFADC500 GUI

13th. June. 2017

Byul Moon

# NKFADC500 GUI

NKFADC500 PROTOTYPE

File Help

Setting Online ADC Monitoring Online TDC Monitoring

Global Parameters

Number of Modules

Pedestal Trigger Interval(ms)

Number of Events

Run Number

Trigger Delay(ns)

Trigger Coincidence Width(ns)

Pulse Count Trigger

Pulse Width Trigger

Peak Sum Trigger

Peak Sum OR Trigger

Take Residual Data

Module#1 Module#2 Module#3 Module#4 Module#5 Module#6

Recording Length

Trigger Type

Channel#1 Channel#2 Channel#3 Channel#4

Coincidence Width(ns)

ADC Threshold

TDC Threshold

Pulse Count Threshold

Pulse Count Interval(ns)

Pulse Width Threshold(ns)

Trigger Deadtime(ns)

Zero Suppression

Pulse Polarity

ADC Offset

ADC Delay(ns)

Peak Sum Width(ns)

ADC Mode

SET SAME TCB RUN STOP

PRINT ON PRINT OFF

Set run number for exp. Data file will be automatically created with 4 digits run number in file name.(e.g. test1000.dat) After a run finishes, run number automatically increases.

If any residual data is available in DRAM, take it after the end of DAQ run.

ON/OFF function for prints of data information. If the status is 'off' state, only memory information of DRAM will be shown.

# NKFADC500 GUI

NKFADC500 DECODER

File Help

Setting Online Monitoring Analysis Monitor

Decoder

DECODER STOP

Online Monitor

ONLINE PAUSE RESUME STOP

Module#1 Module#2 Module#3 Module#4 Module#5 Module#6

Channel#1 Channel#2 Channel#3 Channel#4

Digital Filter

ADC Mode

TDC Mode

Thereshold for Pulse

Thereshold for Digital Filter

Delay for CFD

Ratio for CFD

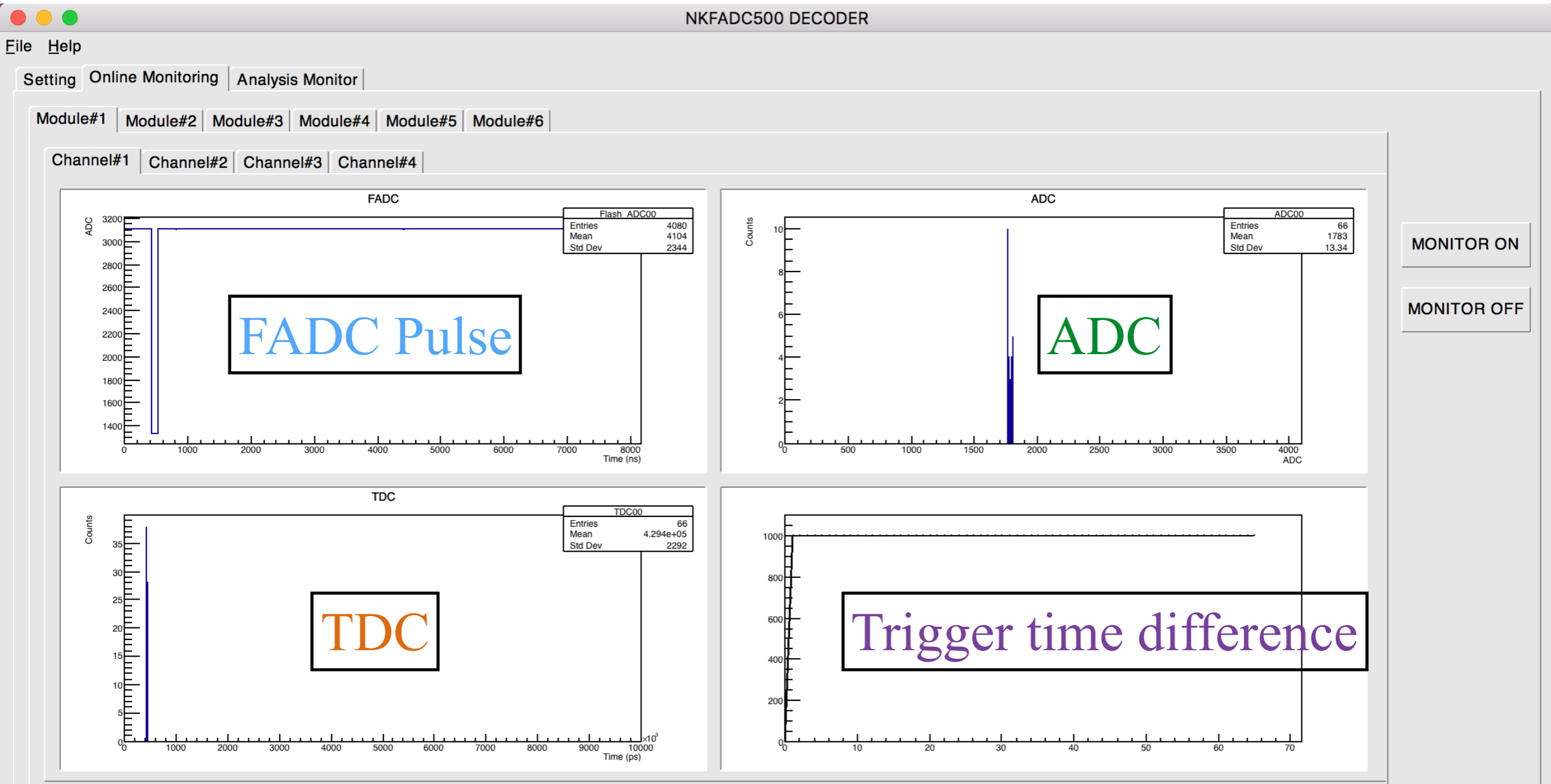
Length for Digital Filter

Gap for Digital Filter

Length for TFA

SET SAME START ANA STOP ANA

# NKFADC500 GUI

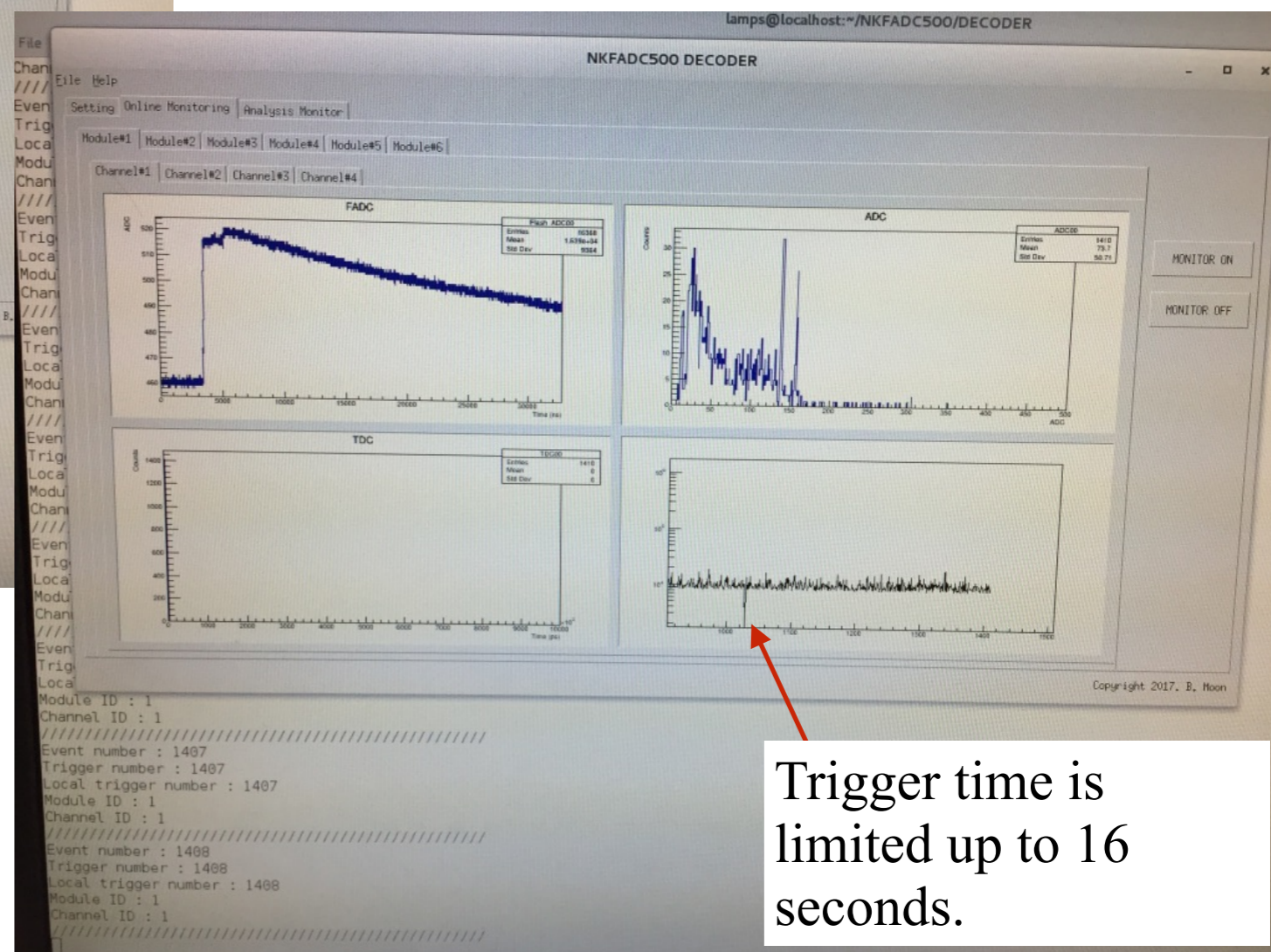
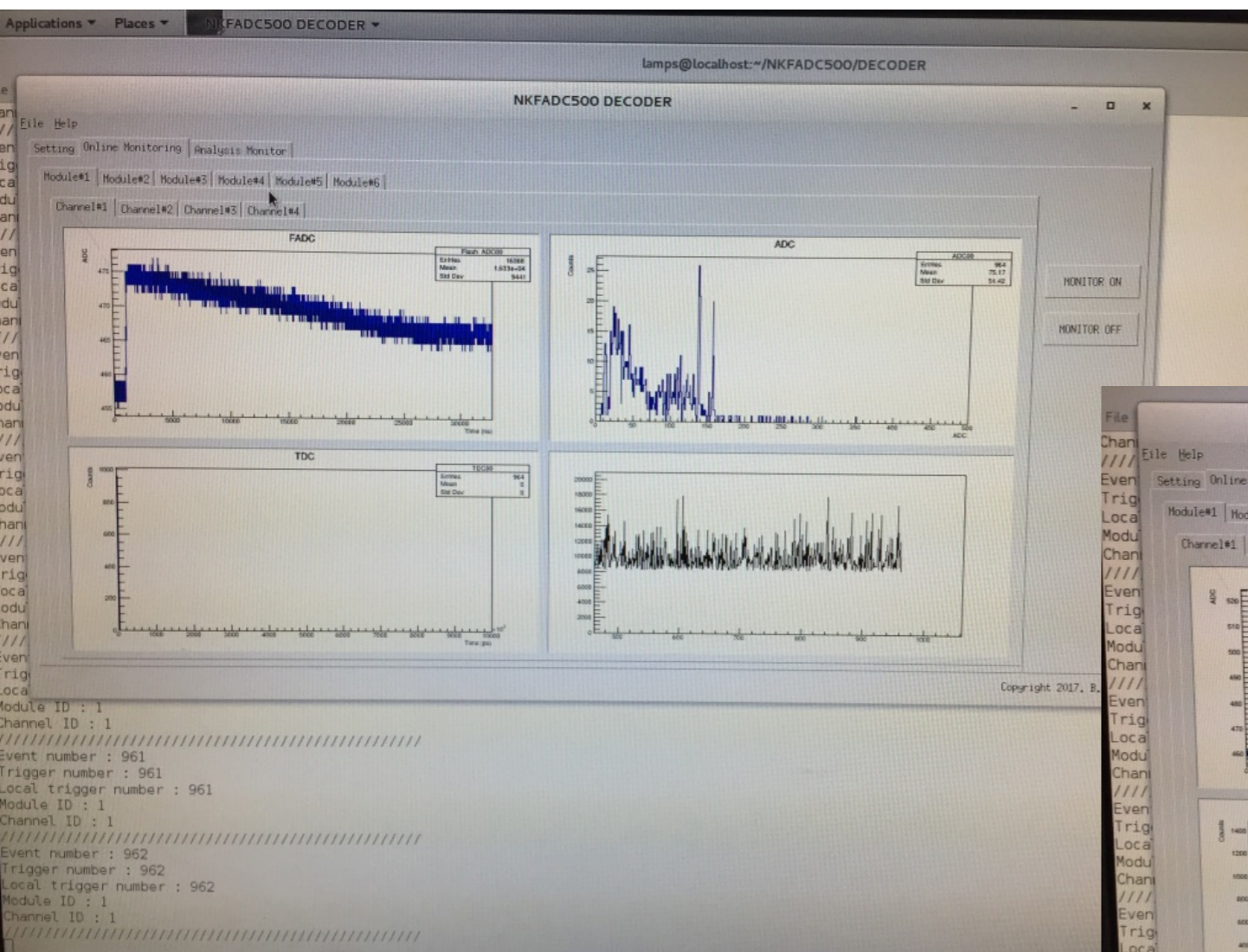


# NKFADC500 GUI



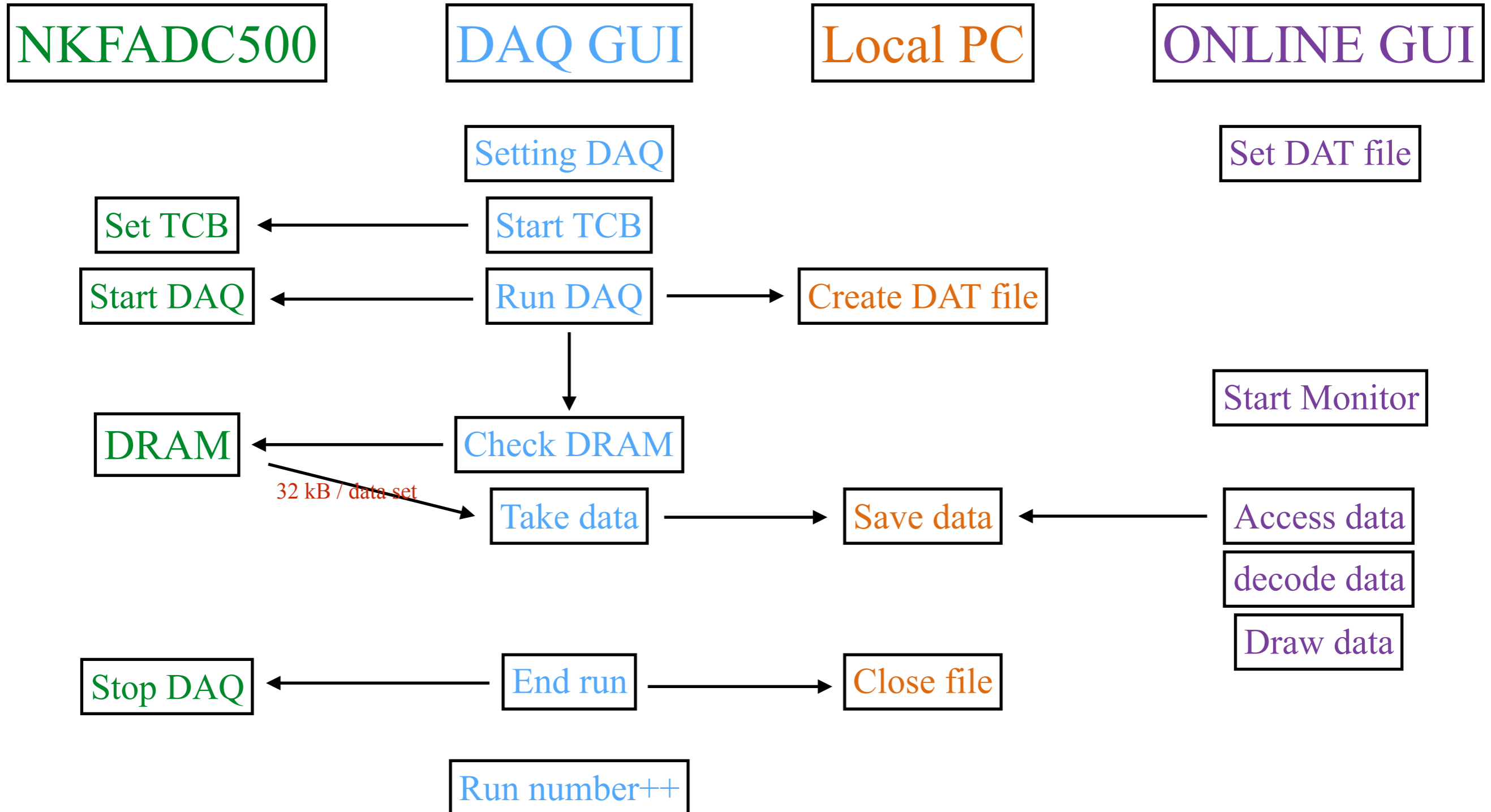


# NKFADC500 GUI



Trigger time is limited up to 16 seconds.

# NKFADC500 GUI



# NKFADC500 GUI

## Problems

1. Trigger rate for future experiments.
2. Global Time-stamp (e.g. Logic Unit for Programmable Operation(LUPO)).
3. Non-unified class files.