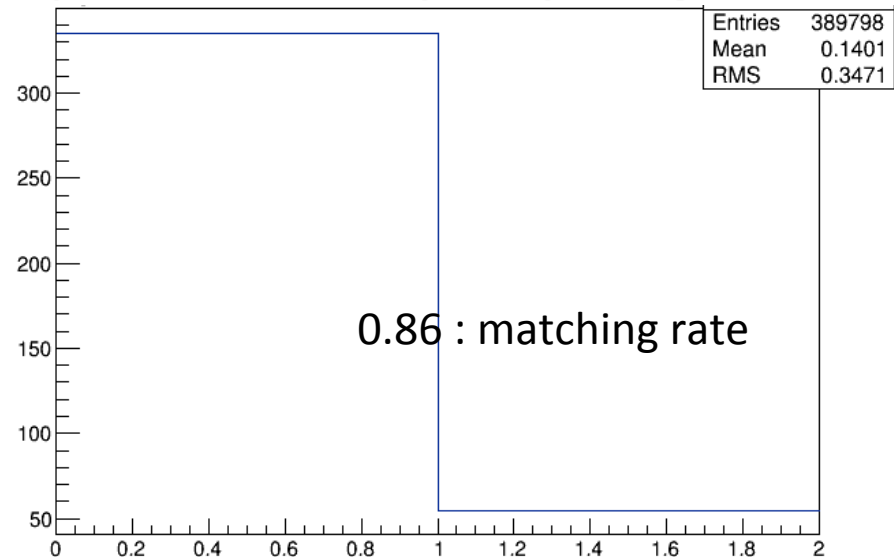
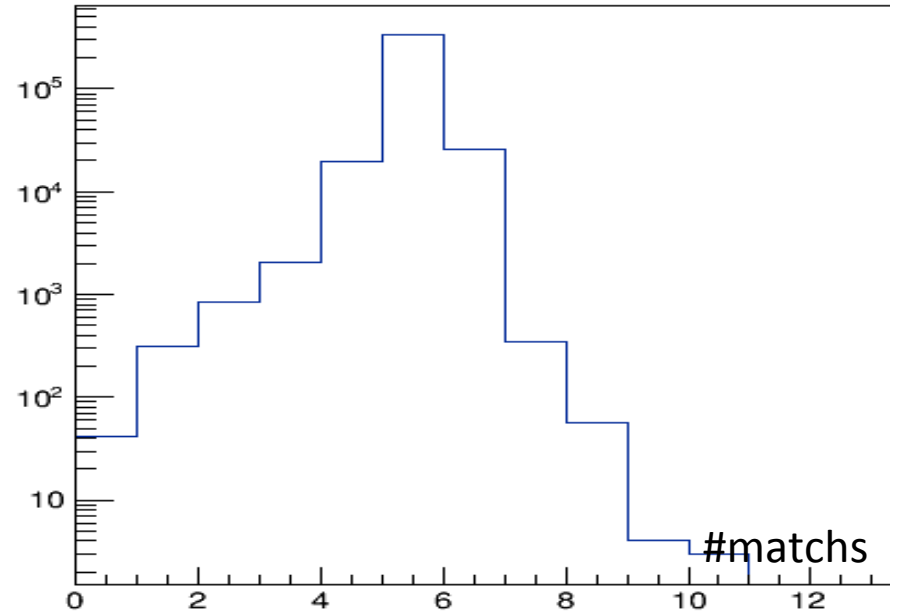


Report 161011

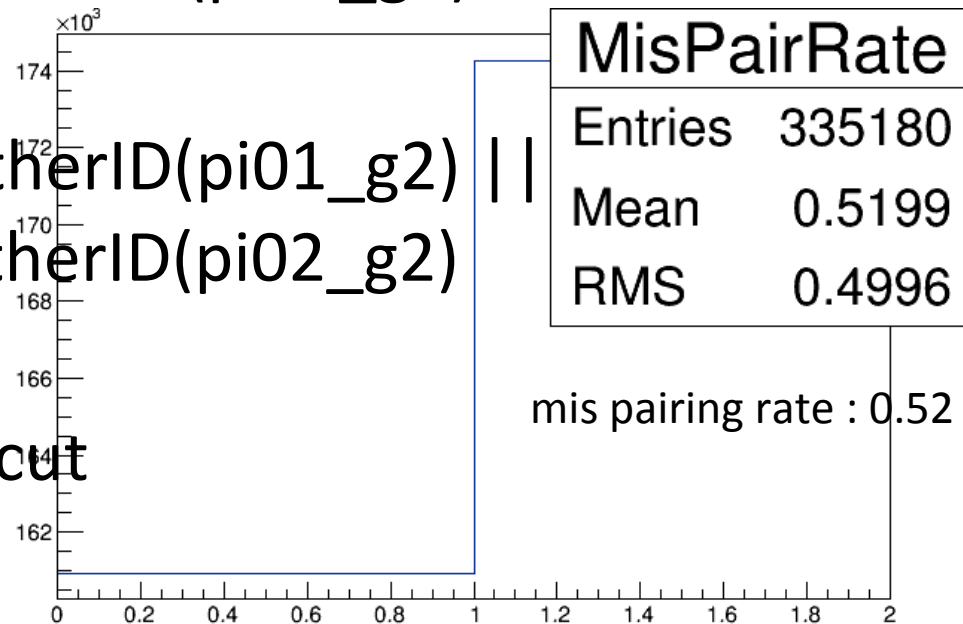
Gamma matching btw MCTrue and MCreco

- No recorded MotherID on MCreco
 - Need to match gammas between MCTrue (particle and decay generation) and MCreco (Reconstructed particles from detector response) in some way.
 - Check hit position of gammas
 - $\text{Distance}_x < 70\text{mm}$ && $\text{Distance}_y < 70\text{mm}$
 - Only 5 gammas on CsI
 - 5 match and one to on match only



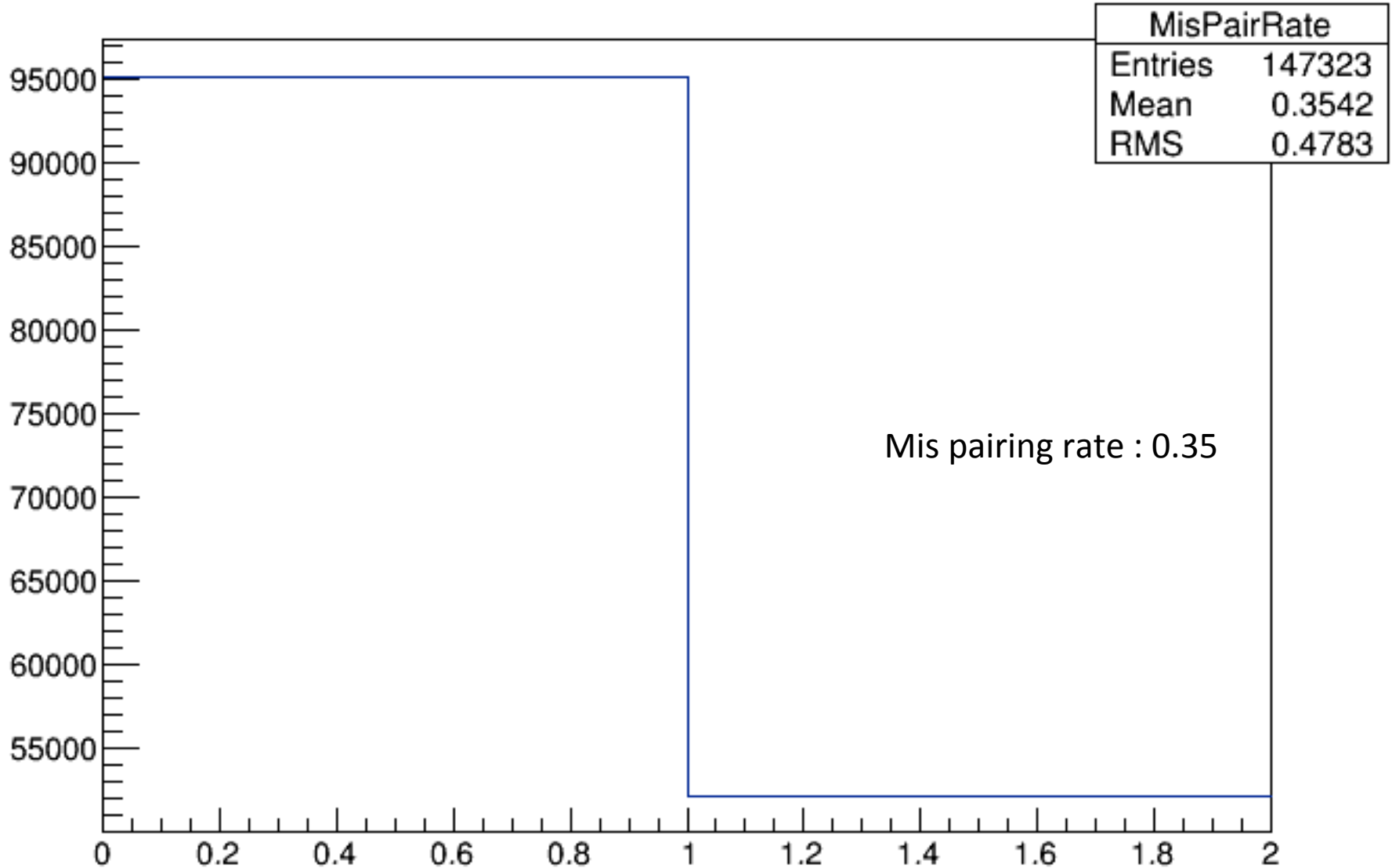
Pi0 pairing check (after matching gamma)

- checking MotherID of each gamma
 - to check whether pi0s consist of proper gammas or not.
 - $\text{MotherID}(\text{pi01_g1}) == \text{MotherID}(\text{pi01_g2}) \ \&\&$
 $\text{MotherID}(\text{pi02_g1}) == \text{MotherID}(\text{pi02_g2})$
 - Proper pairing
 - $\text{MotherID}(\text{pi01_g1}) != \text{MotherID}(\text{pi01_g2}) \ ||$
 $\text{MotherID}(\text{pi02_g1}) != \text{MotherID}(\text{pi02_g2})$
 - Mis pairing
 - Without any kinematical cut



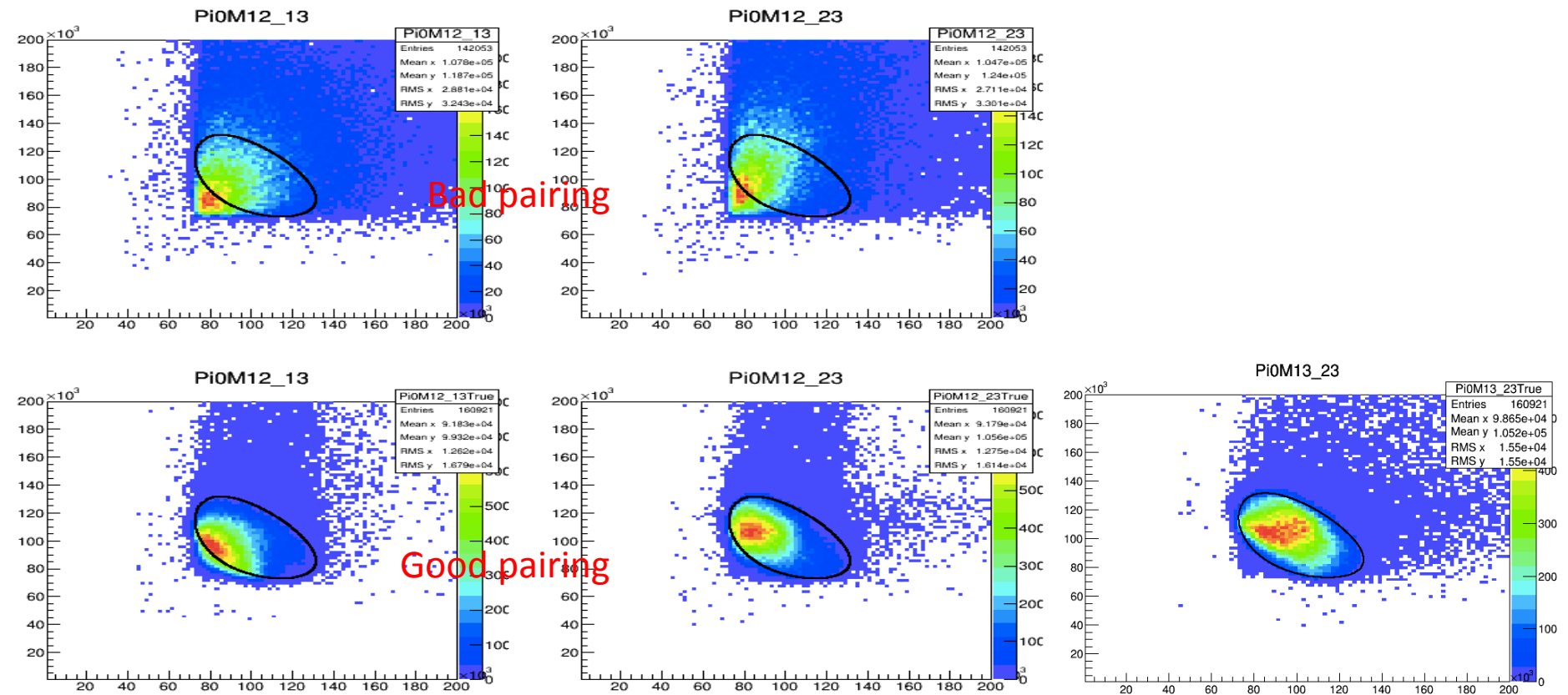
Mis pairing in G6ana?

MisPairRate

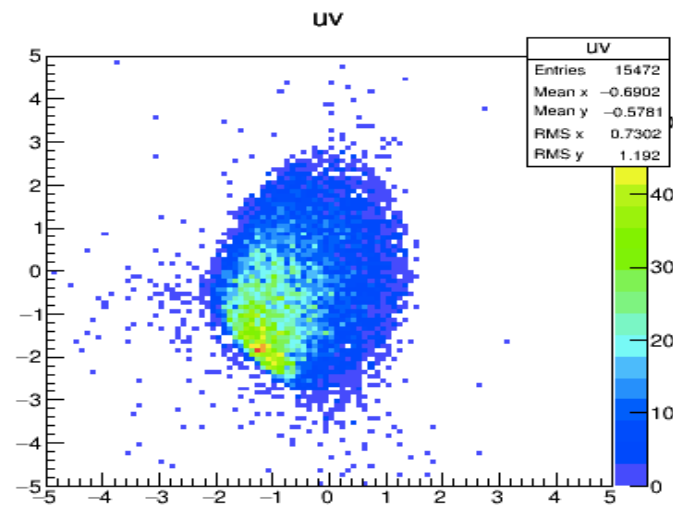
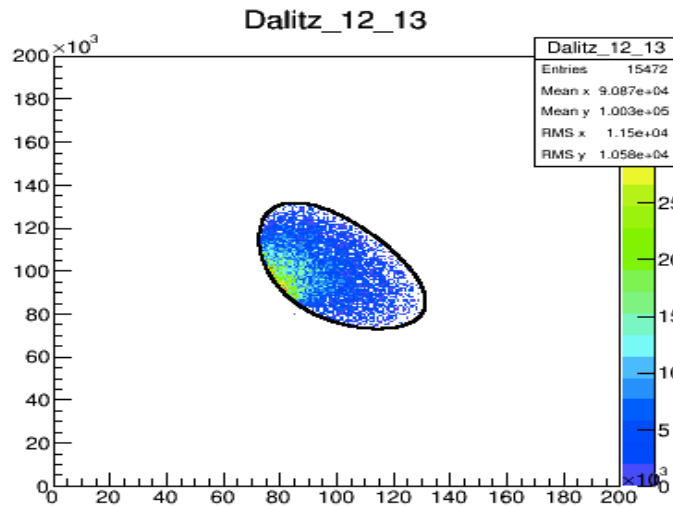
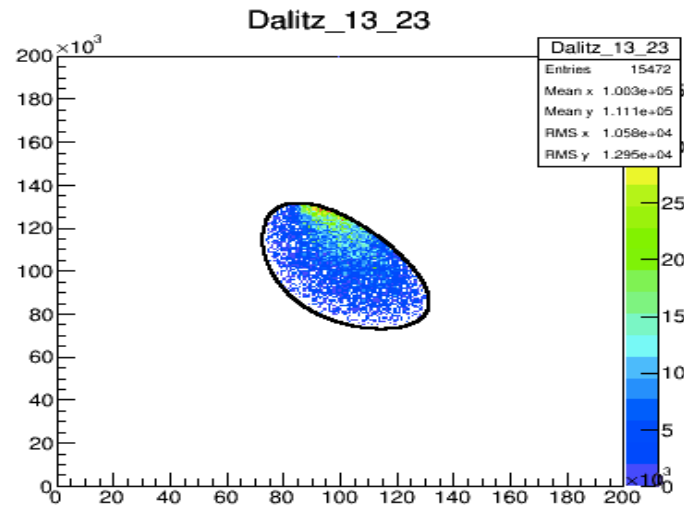
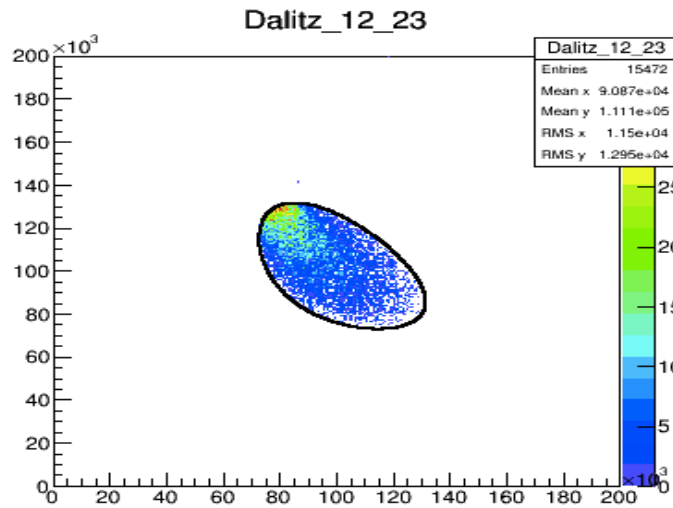


Dalitz plots in g5ana, g6ana

- Good pairing vs bad pairing
- g5ana

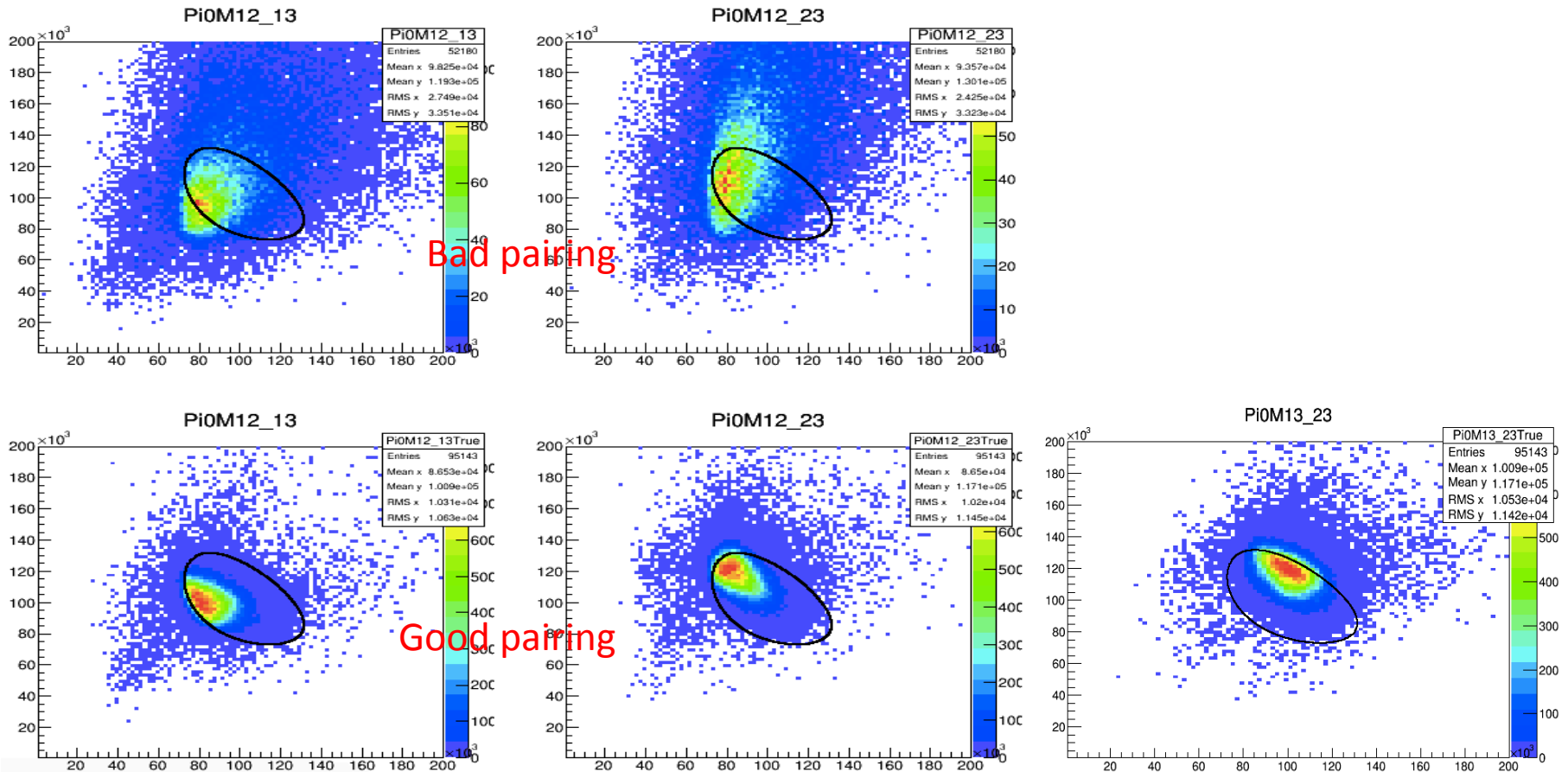


MCTrue in g5ana

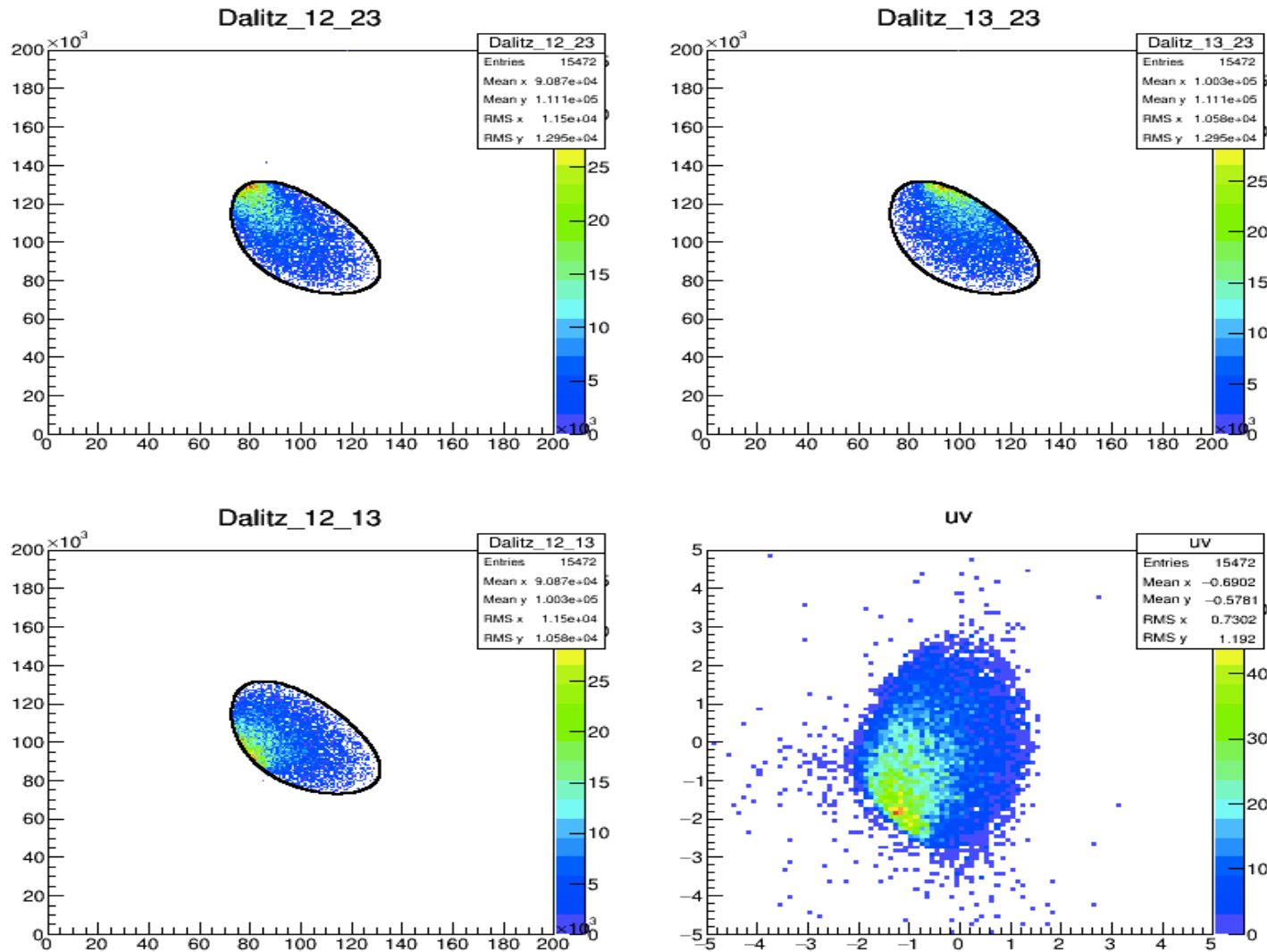


Dalitz plots in g5ana, g6ana

- Good pairing vs bad pairing
- g6ana



MCTrue in g6ana



Event Display

Full line : MCTReco
Dotted line : MCTRue

