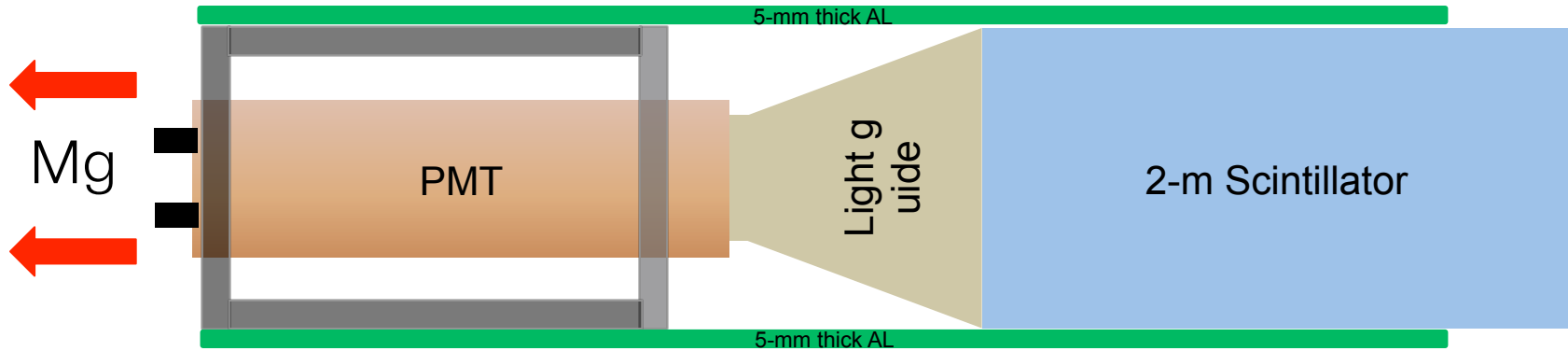

Neutron Bar Support Structure for RCNP Test

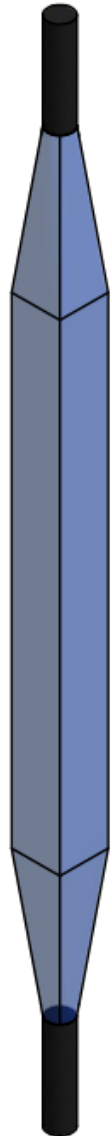
2016. 03. 29
Minho Kim

Neutron Bar Install Direction

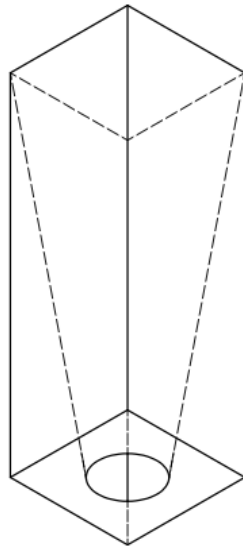


- If a neutron bar is installed with vertical direction, it will be fallen down.
- All structures around neutron bar in upper figure should be removed.

Neutron Bar Install with Vertical Direction



- Something should support the light guide.
- Order the company produced the light guide?
- Fill the vacant space with soft material for fix.



Support Structure

