

CsI Detector Test



Jaebeom Park,
Hanseul Lee, Dongho Moon



LAMPS Meeting
21st July, 2016

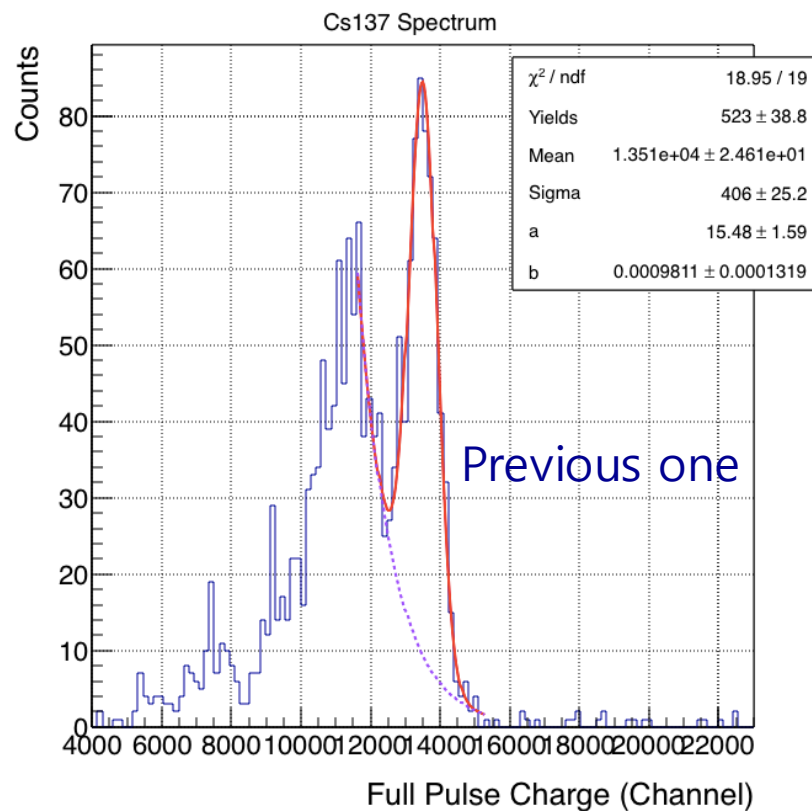
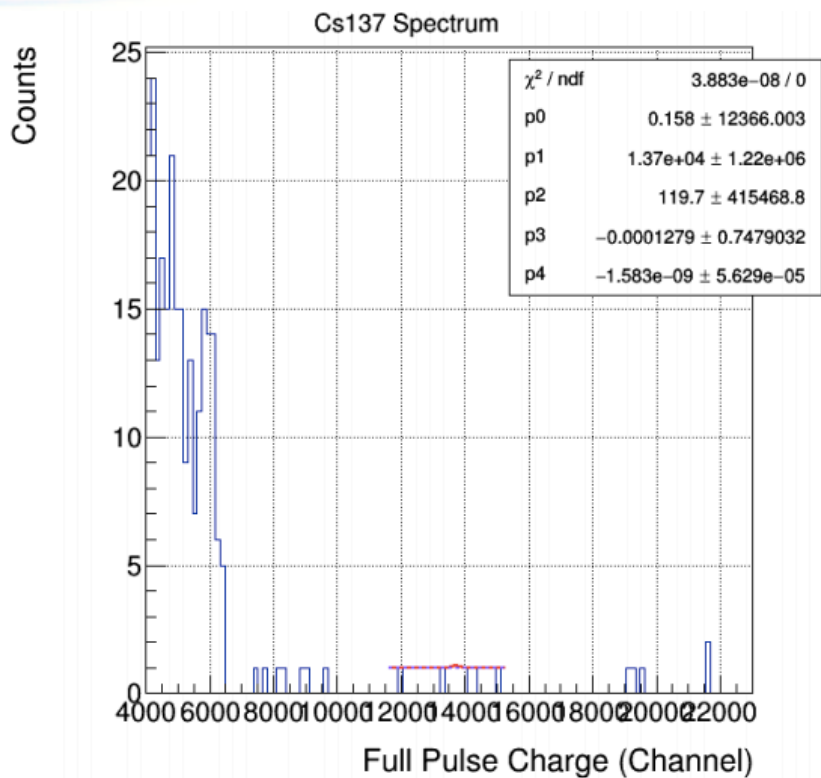
Status Report

- Experiment setup with equipment from CNU.



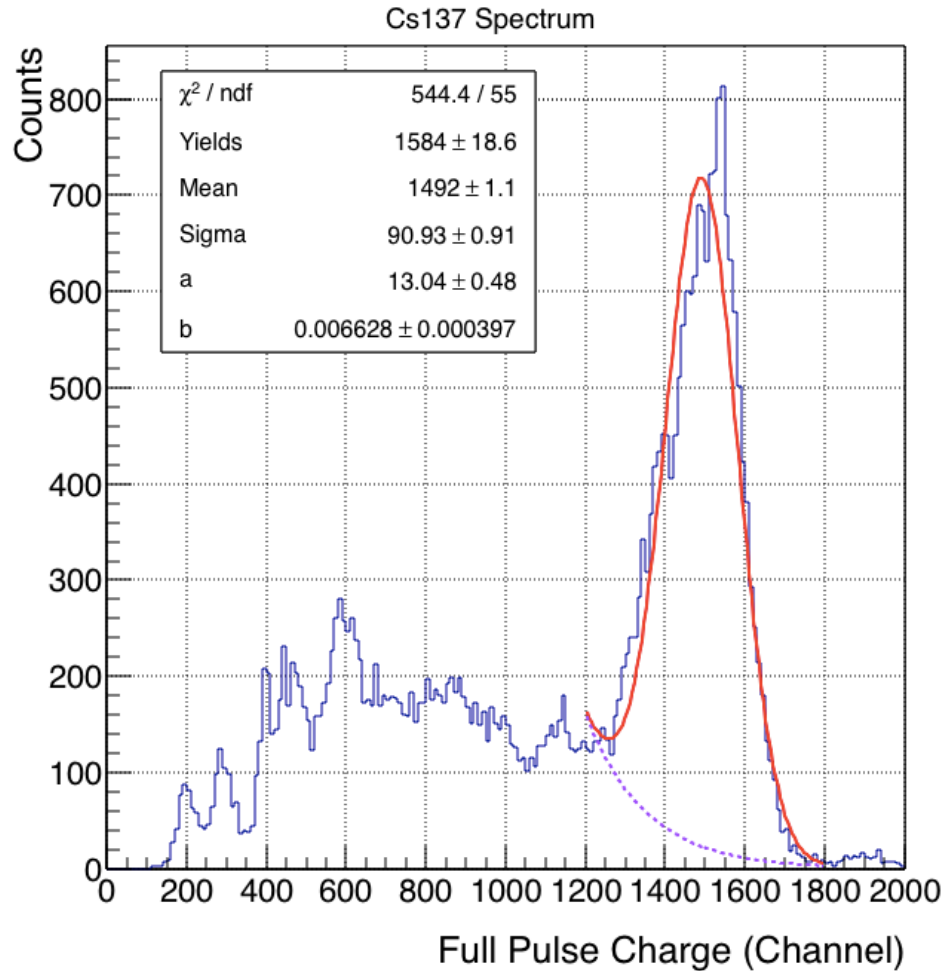
Status Report

- First data taken by FADC



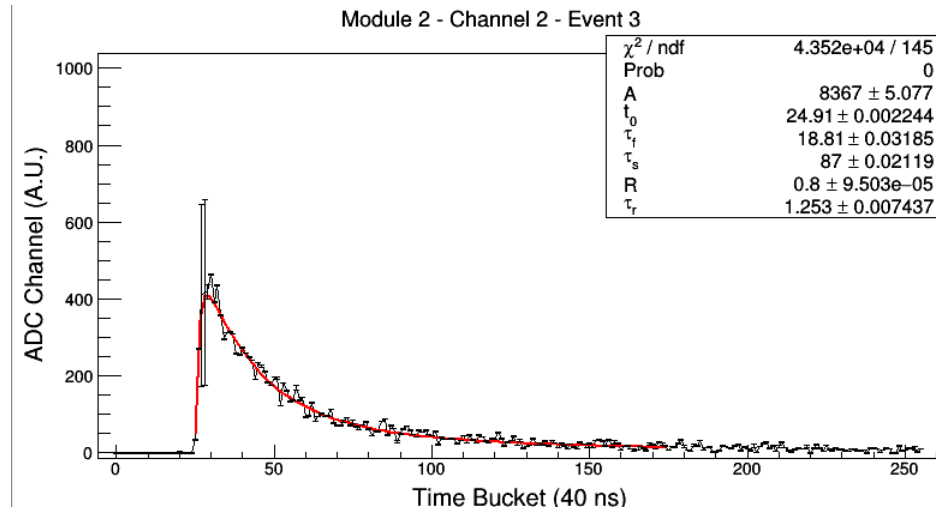
Status Report

- First data taken by FADC

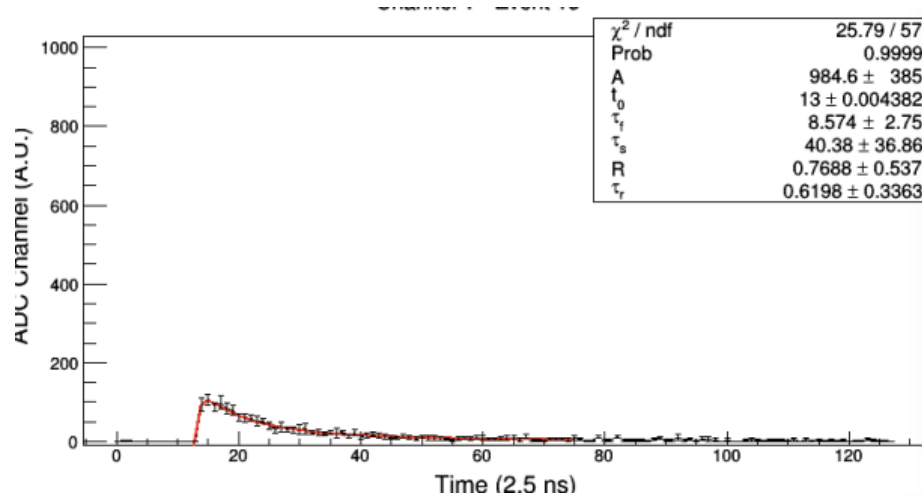


Status Report

- First data taken by FADC



- Previous pulse



- New pulse

Summary & Plan

- Hanseul is working on cut study.
 - Previous cut condition :
 - $\text{chisq}/\text{NDF} < 900$, $A > 4000$, $\tau_r > 0.75$, $\tau_f > 12$, $\tau_f < 25$,
 $\text{IntegralEnd_val} - \text{fMax_X} > 120$, $\text{fMax_val} > 50$
 - New cut condition should be re-evaluated.
- What are we going to measure for the performance study ?
 - Resolution and efficiency ?? What else ?
- Gyunghwan is working on low LAMPS simulation.





THANK YOU!!!