

PSA FastFit Steps

1. Scan through time bucket. start finding peaks from 0 to 512.
2. Fit with sample pulse $a \cdot f(x - x_0)$,
 $f(x)$: sample pulse, a : amplitude, x_0 : position
3. Subtract pulse from adc distribution.
4. Do 1. ~ 3. until end up in time bucket = 512.

Speed Test

- Test with run_974 first 100 events using PSA and Linear Tracking Task. Used 8 threads for PSA.

PSA All

PSA FastFit

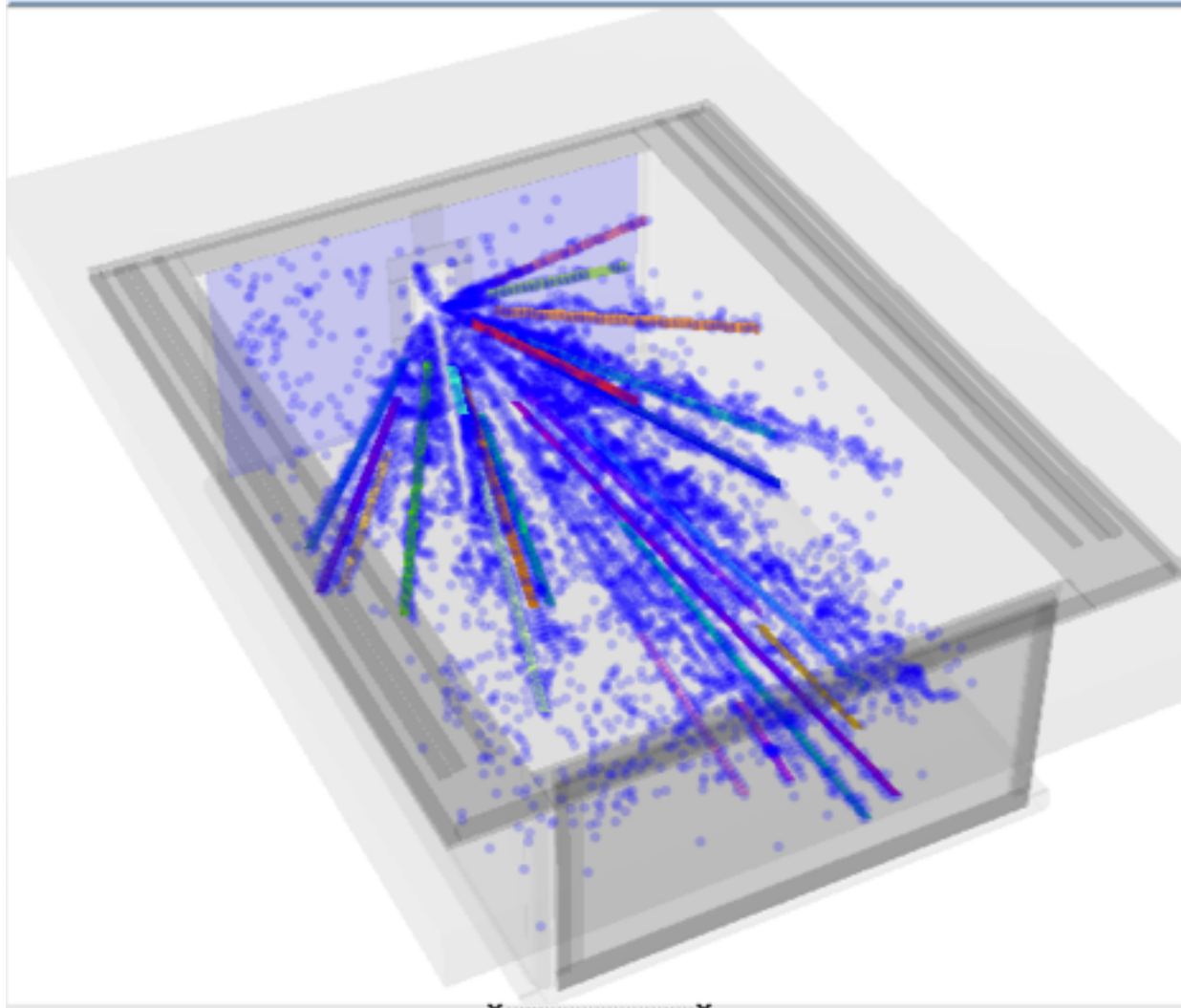
- | | |
|------------------------------|------------------------------|
| • Total: 7.00 s | • Total: 4.28 s |
| • PSA: 1.03 s (14.7 %) | • PSA: 0.91 s (21.2 %) |
| • Tracking: 5.96 s (85.3 %) | • Tracking: 3.37 s (79.8 %) |

*per event

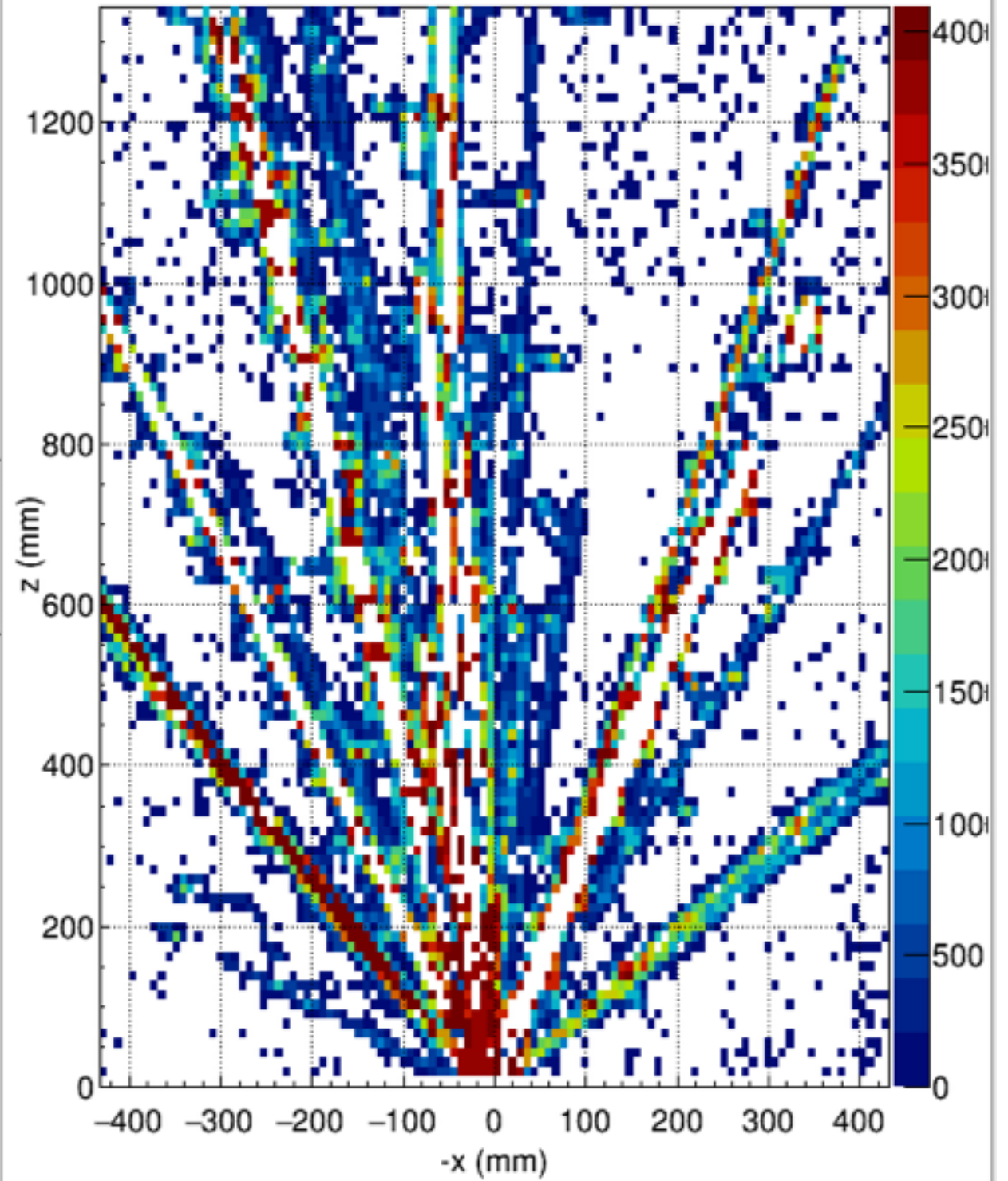
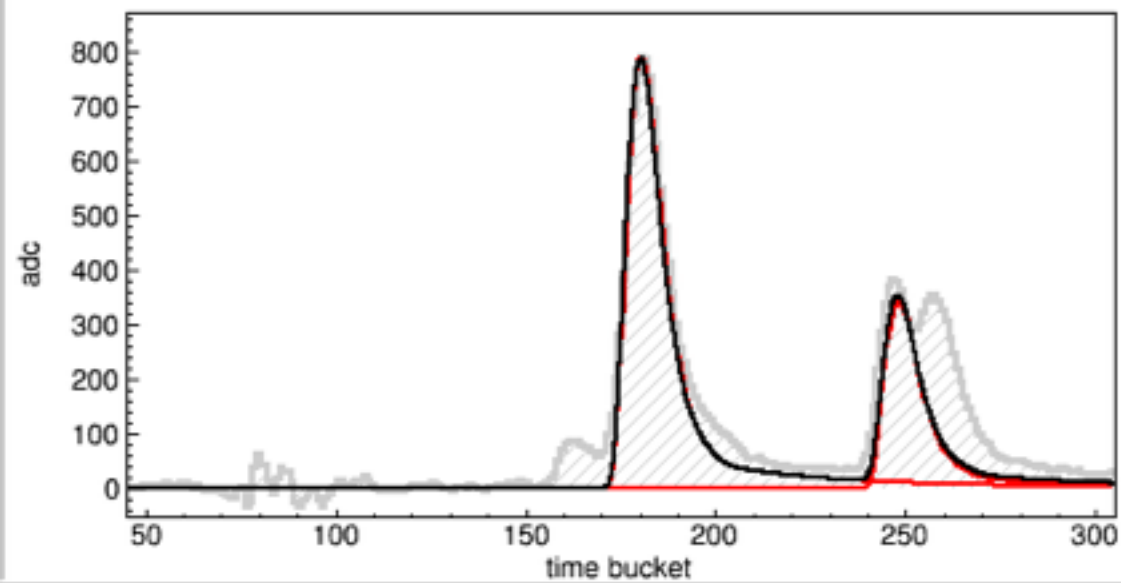
PSA All

Eve Main Window

Overview



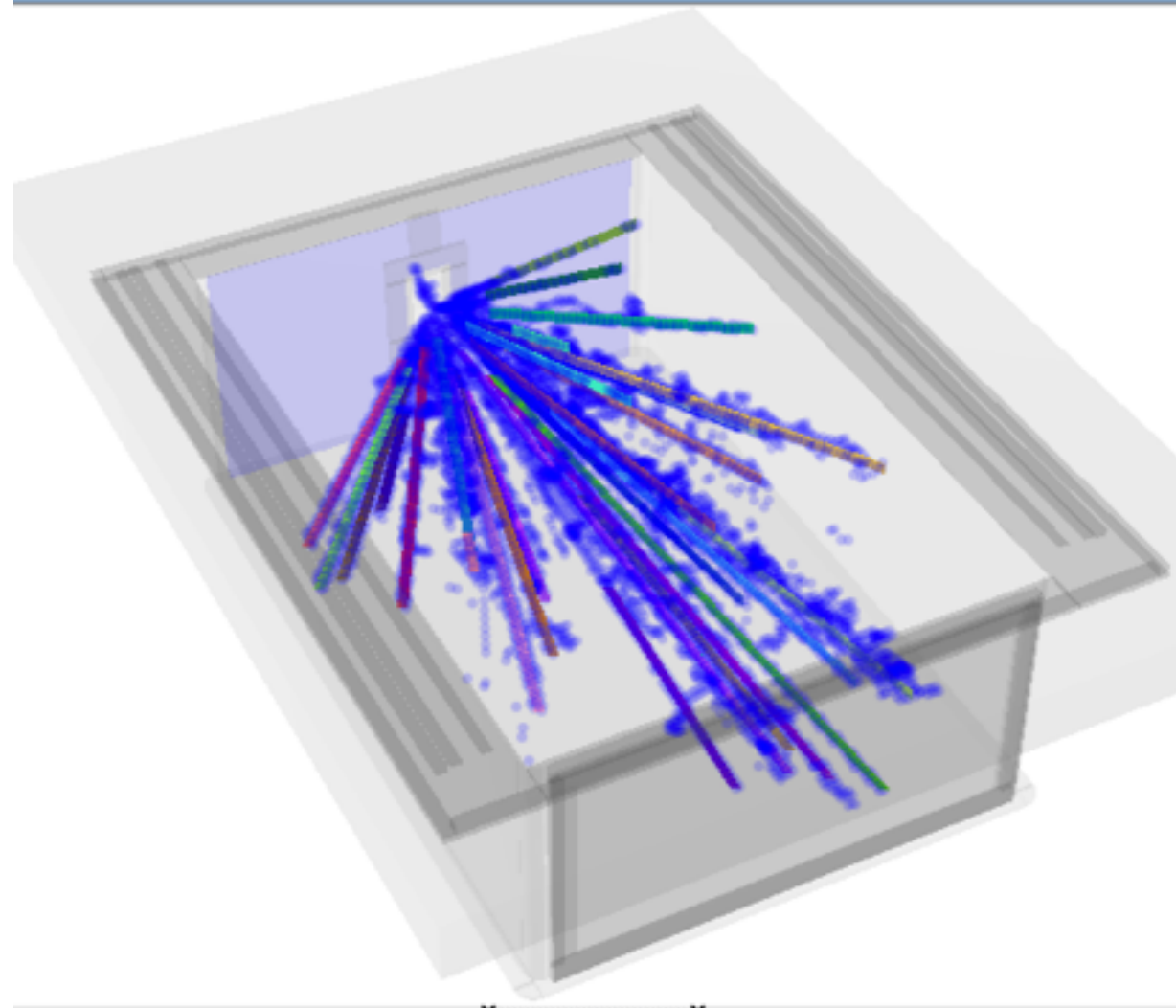
row: 68, layer: 62



PSA FastFit

Eve Main Window

Overview



row: 68, layer: 62

