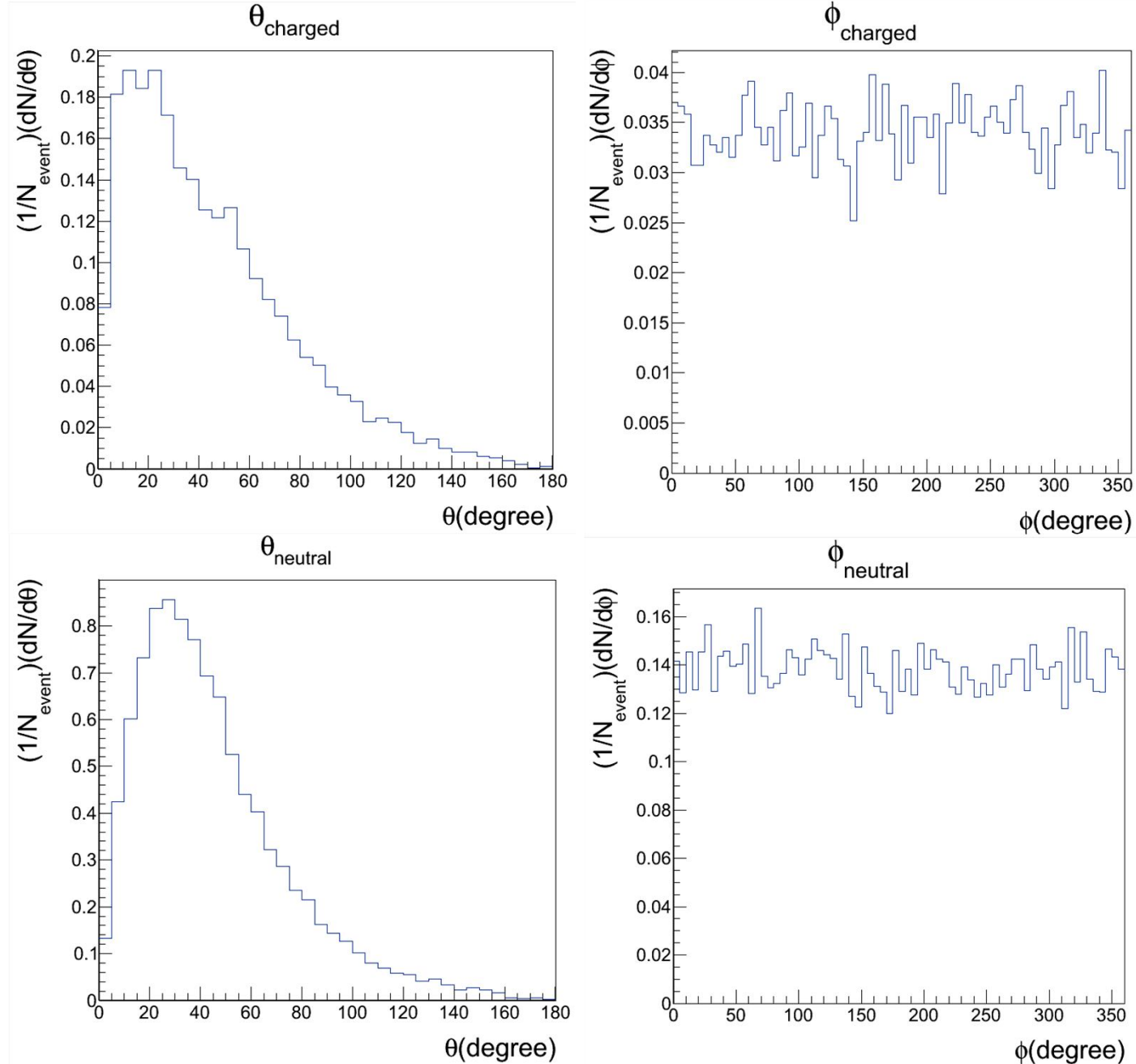


# 2014. 1. 28. Status Report

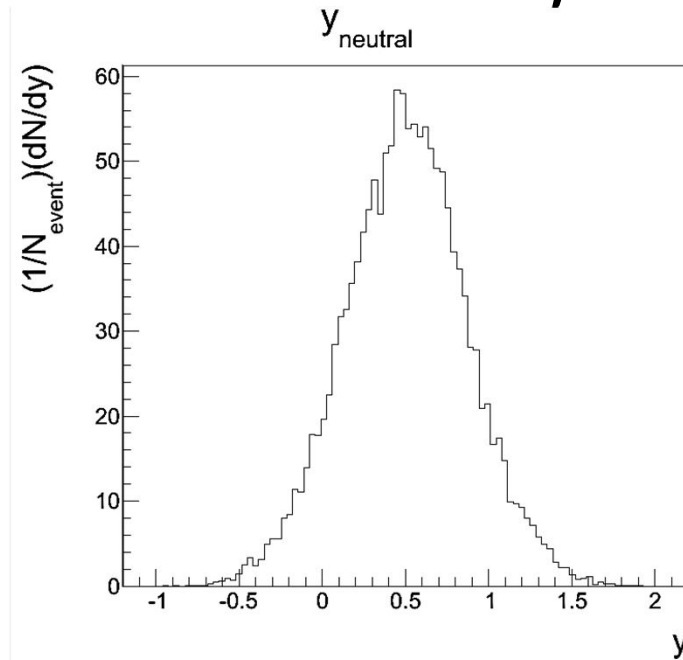
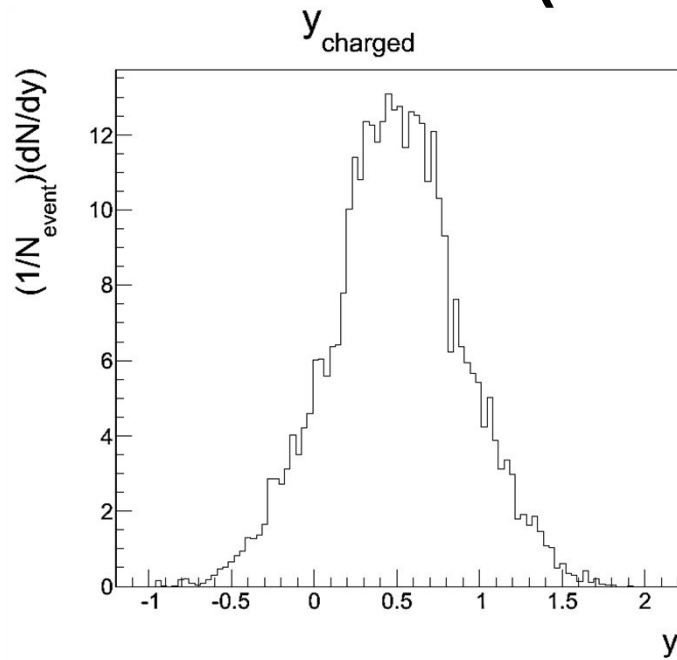
Kim, ShinHyung  
Korea University

# AMD data (132Sn+124Sn, 20MeV/u)

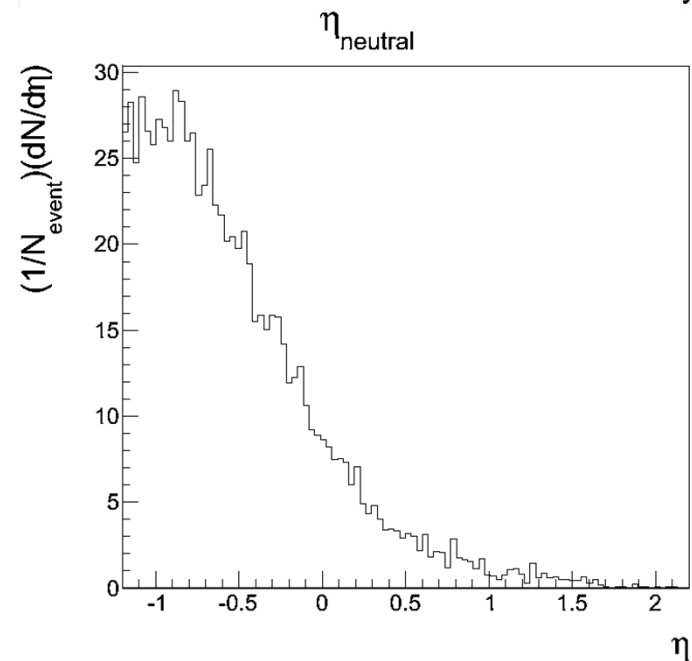
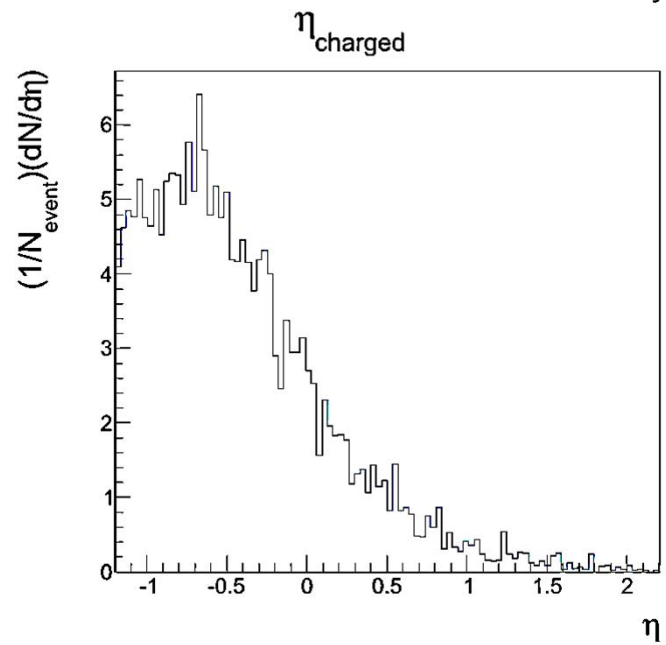


1 bin ->  
5 degrees

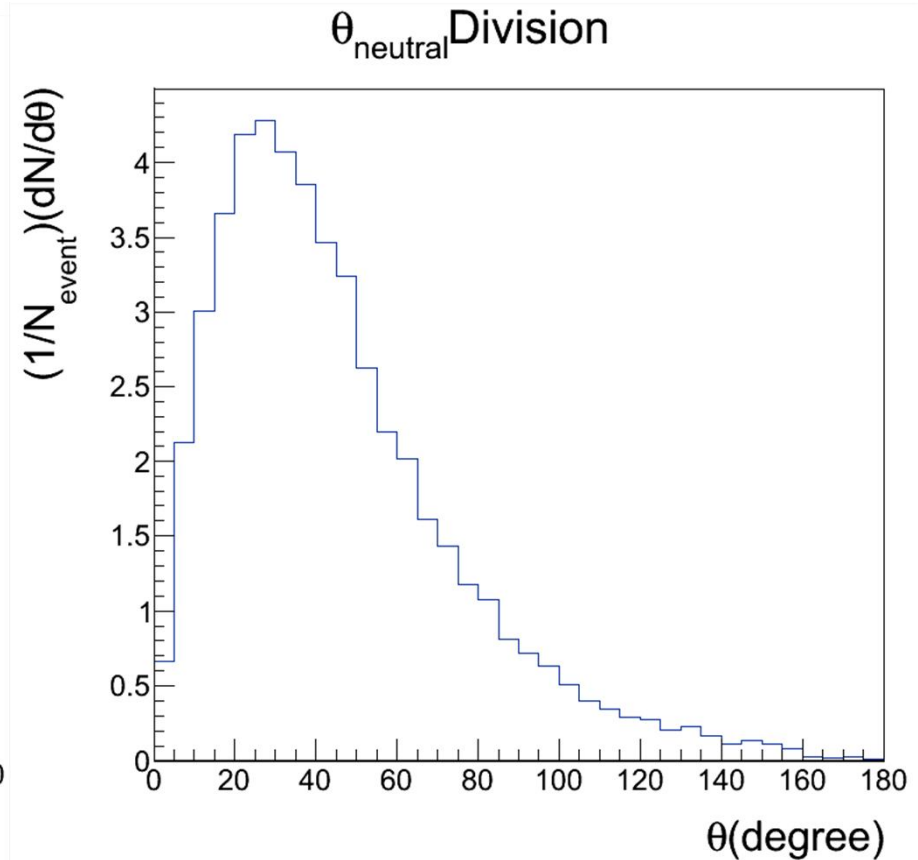
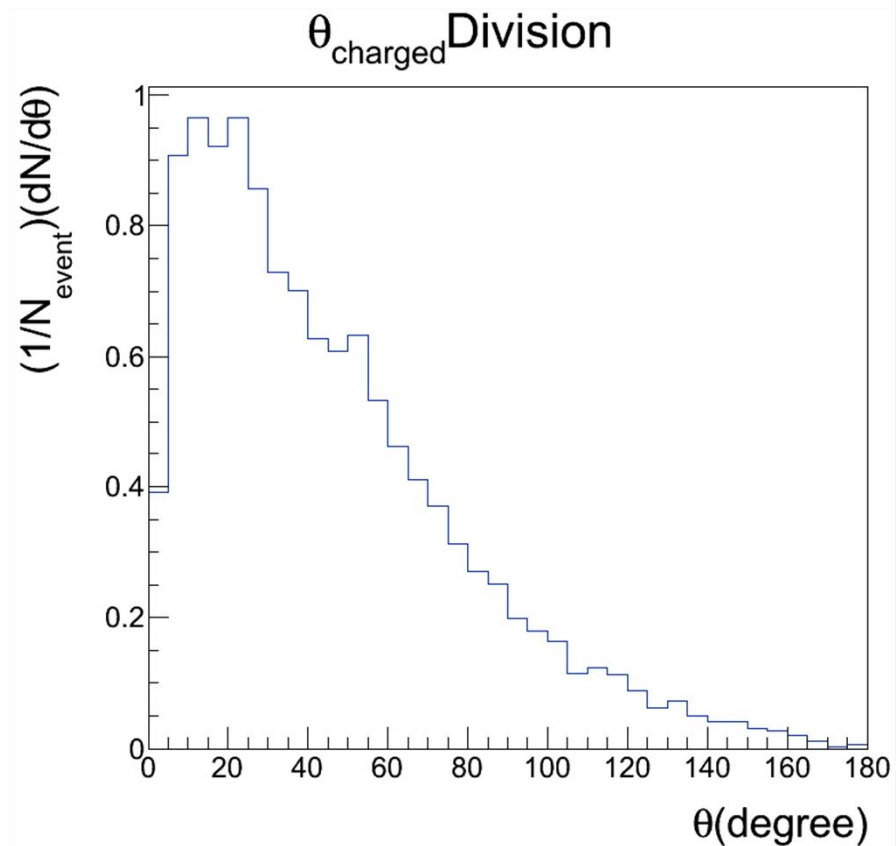
# AMD data (132Sn+124Sn, 20MeV/u)



$n_{\text{bins}} = 100$



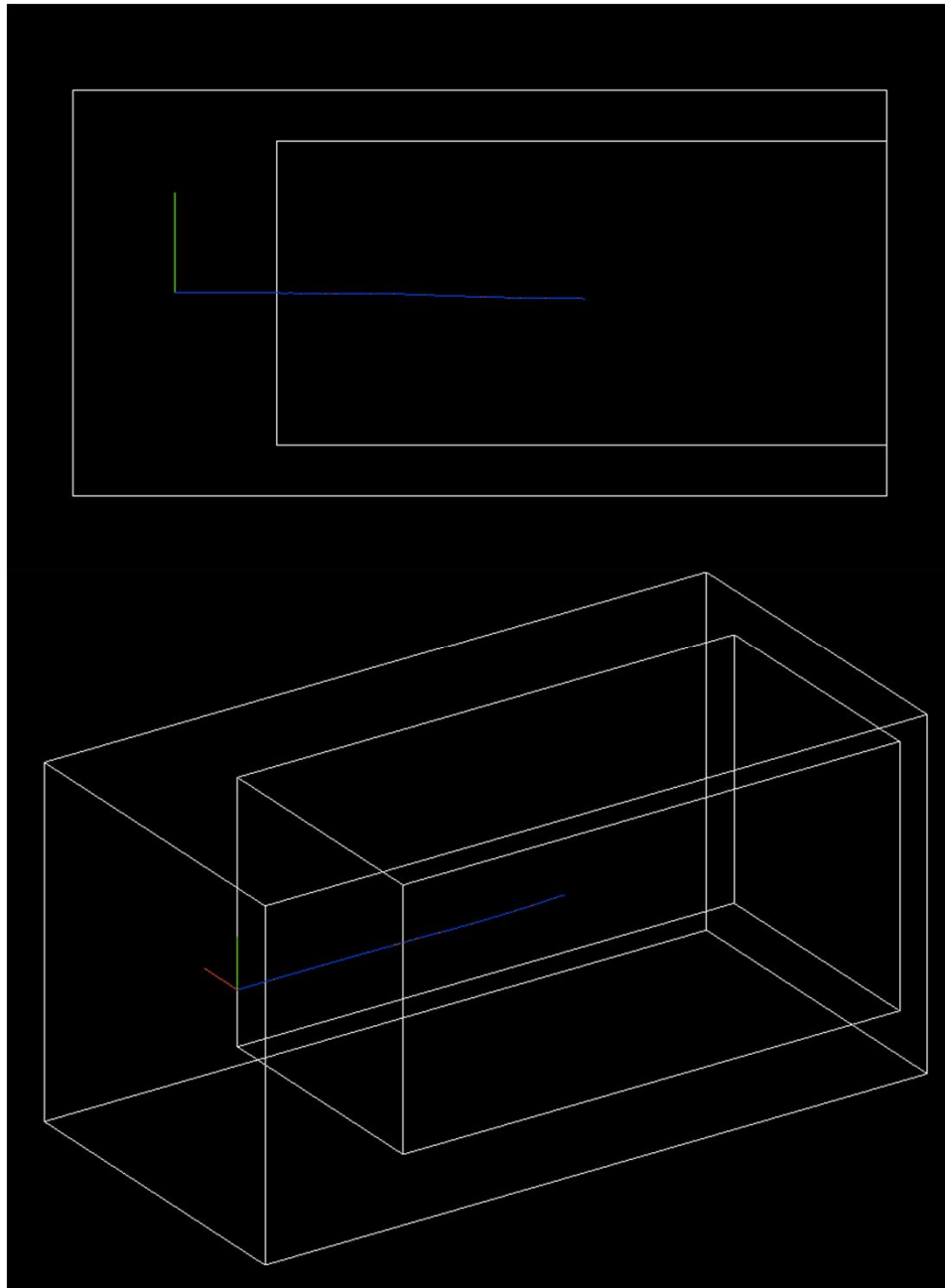
# AMD data ( $^{132}\text{Sn}+^{124}\text{Sn}$ , 20MeV/u)



1 bin -> 5 degrees

-> Design Detector!

# GEANT4 Simulation



Lab Size : 20x20x40 cm  
Det Size : 15x15x30 cm  
Scintillator  
150 MeV proton beam

$\theta=90^\circ$   
 $\phi=180^\circ$

$\theta=120^\circ$   
 $\phi=150^\circ$

# Plan

- study physics about AMD data
- make other shape/material detector using GEANT4 and get data